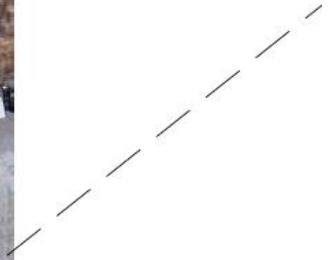


# Fresno Ironworkers Training Facility Parking Lot Expansion





# Project Location



1380 S. CHANNING AVE

PROJECT AREA

KEARNEY FRONTAGE

S. WEST AVE

S. CHANNING AVE

© 2018 Google

# Subjects of Presentation

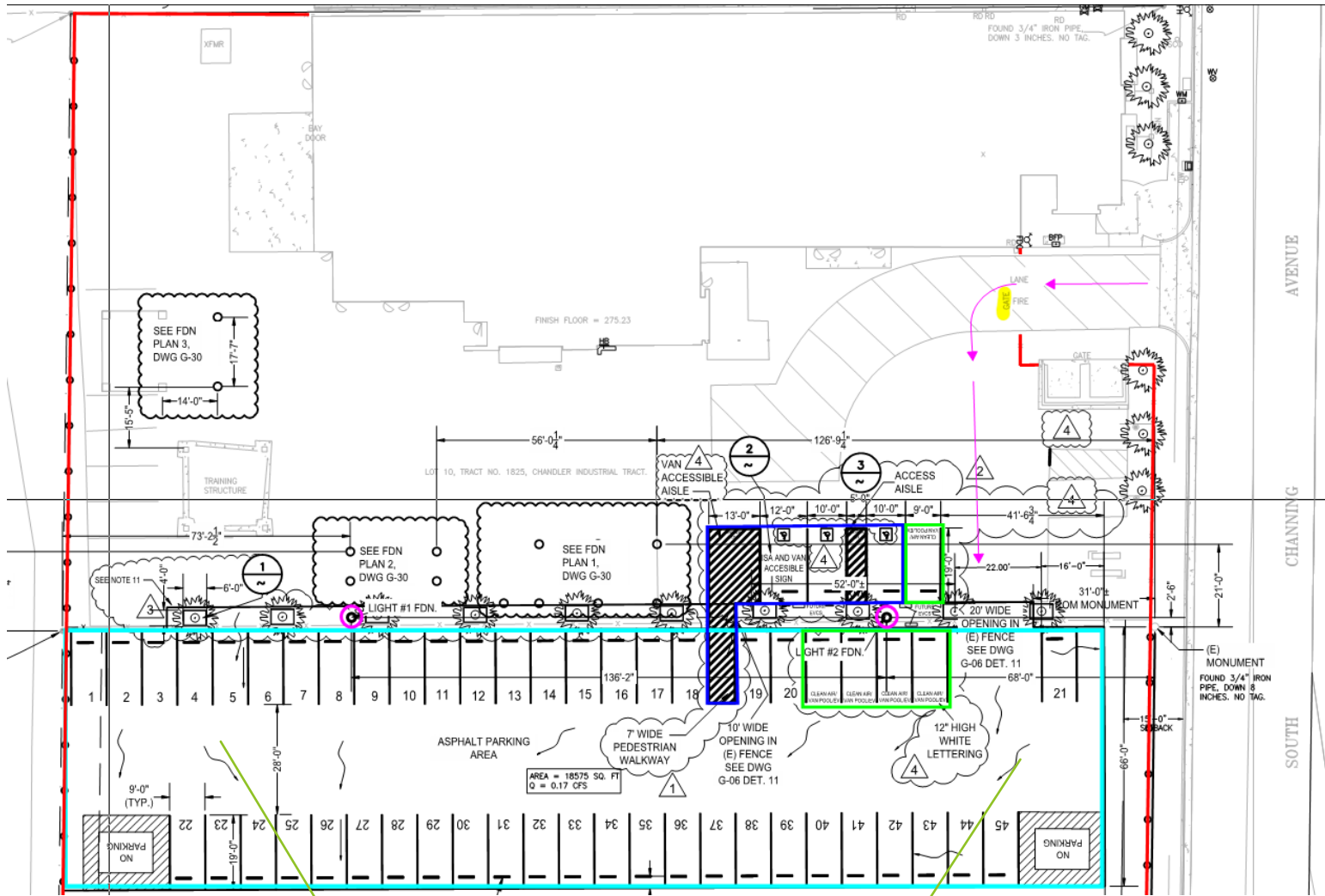
- ▶ Purpose for the new parking lot - Operational Statement
- ▶ Additions per New City Ordinances
- ▶ The Ironworkers Training Facility - Additional Safety Measures to protect the trainees
- ▶ Sidewalk Waiver - Public Works

# Purpose for the new parking lot

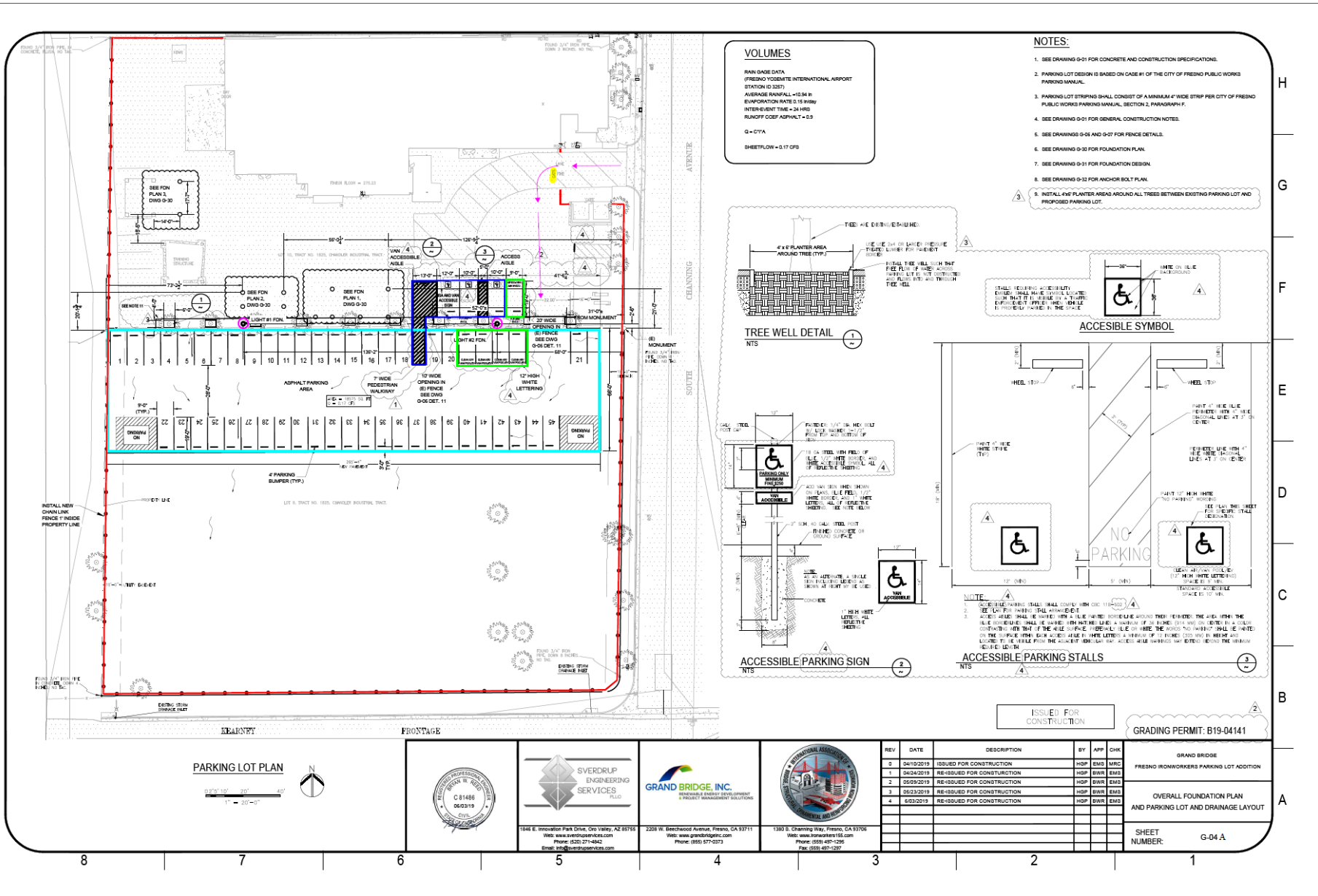
- ▶ The Fresno Ironworkers Training Facility is concerned for the trainees that are parked along S. Channing Way. There are numerous accidents every day in the City of Fresno.
- ▶ To prevent accidents to property and physical injuries to the trainees, the Fresno Ironworkers Training Facility has decided to expand their existing parking lot. The expansion of the existing parking will remove the trainee's automobiles from the street and relocated them within the property fenced area.
- ▶ Once relocated in the fenced, new parking protected area, the trainees will not be subject to road traffic and the general public. A safe, well illuminated, park lot is essential to protect all the young men and women that attend the Fresno Ironworkers training facility

# Trainees are currently parking on the street - S. Channing Way





Proposed New Parking Area

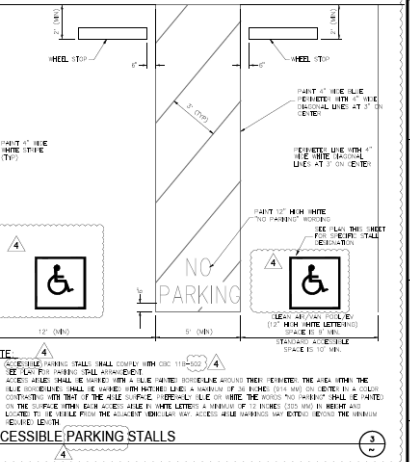
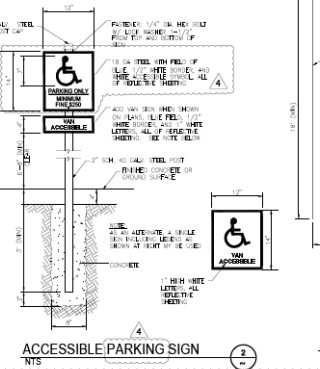
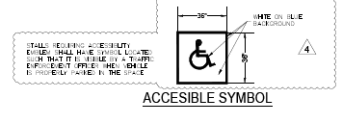
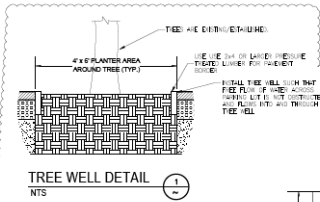


**VOLUMES**

RAIN GAGE DATA  
 (FRESNO YOSEMITE INTERNATIONAL AIRPORT  
 SECTION 0.307)  
 AVERAGE RAINFALL = 10.94 IN  
 EVAPORATION FACTOR = 0.70 (FRESH)  
 INTERVENTION TIME = 24 HRS  
 RUNOFF COEF ASPHALT = 0.3

G = CTA  
 SHEETFLOW = 0.17 CFS

- NOTES:**
1. SEE DRAWING G-01 FOR CONCRETE AND CONSTRUCTION SPECIFICATIONS.
  2. PARKING LOT DESIGN IS BASED ON CASE #1 OF THE CITY OF FRESNO PUBLIC WORKS PARKING MANUAL.
  3. PARKING LOT STRIPING SHALL CONSIST OF A MINIMUM 4" WIDE STRIP PER CITY OF FRESNO PUBLIC WORKS PARKING MANUAL, SECTION 2, PARAGRAPH F.
  4. SEE DRAWING G-01 FOR GENERAL CONSTRUCTION NOTES.
  5. SEE DRAWINGS G-06 AND G-07 FOR FENCE DETAILS.
  6. SEE DRAWING G-30 FOR FOUNDATION PLAN.
  7. SEE DRAWING G-31 FOR FOUNDATION DESIGN.
  8. SEE DRAWING G-32 FOR ANCHOR BOLT PLAN.
3. INSTALL PVC PLANTER AREAS AROUND ALL TREES BETWEEN EXISTING PARKING LOT AND PROPOSED PARKING LOT.



**PARKING LOT PLAN**

1" = 20'-0"



**SVERDRUP ENGINEERING SERVICES, INC.**

1448 E. Innovation Park Drive, Oro Valley, AZ 85755  
 Web: www.sverdrup.com  
 Phone: (520) 271-4842  
 Email: info@sverdrup.com

**GRAND BRIDGE INC.**

RENEWABLE ENERGY DEVELOPMENT & PROJECT MANAGEMENT SOLUTIONS

2038 W. Birchwood Avenue, Fresno, CA 93711  
 Web: www.grandbridge.com  
 Phone: (559) 497-1295  
 Fax: (559) 497-2297



1380 B. Channing Way, Fresno, CA 93706  
 Web: www.grandbridge.com  
 Phone: (559) 497-1295  
 Fax: (559) 497-2297

REV	DATE	DESCRIPTION	BY	APP	CHK
2	24/10/2019	ISSUED FOR CONSTRUCTION	HSP	EMG	MBC
1	24/04/2019	RE-ISSUED FOR CONSTRUCTION	HSP	BWR	EMG
2	05/05/2019	RE-ISSUED FOR CONSTRUCTION	HSP	BWR	EMG
3	09/23/2019	RE-ISSUED FOR CONSTRUCTION	HSP	BWR	EMG
4	09/23/2019	RE-ISSUED FOR CONSTRUCTION	HSP	BWR	EMG

ISSUED FOR CONSTRUCTION

GRADING PERMIT: B19-04141

GRAND BRIDGE  
 FRESNO IRONWORKERS PARKING LOT ADDITION

OVERALL FOUNDATION PLAN  
 AND PARKING LOT AND DRAINAGE LAYOUT

SHEET NUMBER: G-04 A

8 7 6 5 4 3 2 1

H  
G  
F  
E  
D  
C  
B  
A

# The facility has already agreed to pay additional cost to construct:

- ▶ A paved parking lot instead of an aggregate parking lot.
- ▶ Handicap Parking Stalls
- ▶ Install 2 Light Poles: 2 LED lights per light pole.
- ▶ Underground Electrical Conduits for future EV Charging Stations.
- ▶ Flower beds in new expanded parking lot.
- ▶ Pedestrian Walkway from existing parking lot to new parking lot.



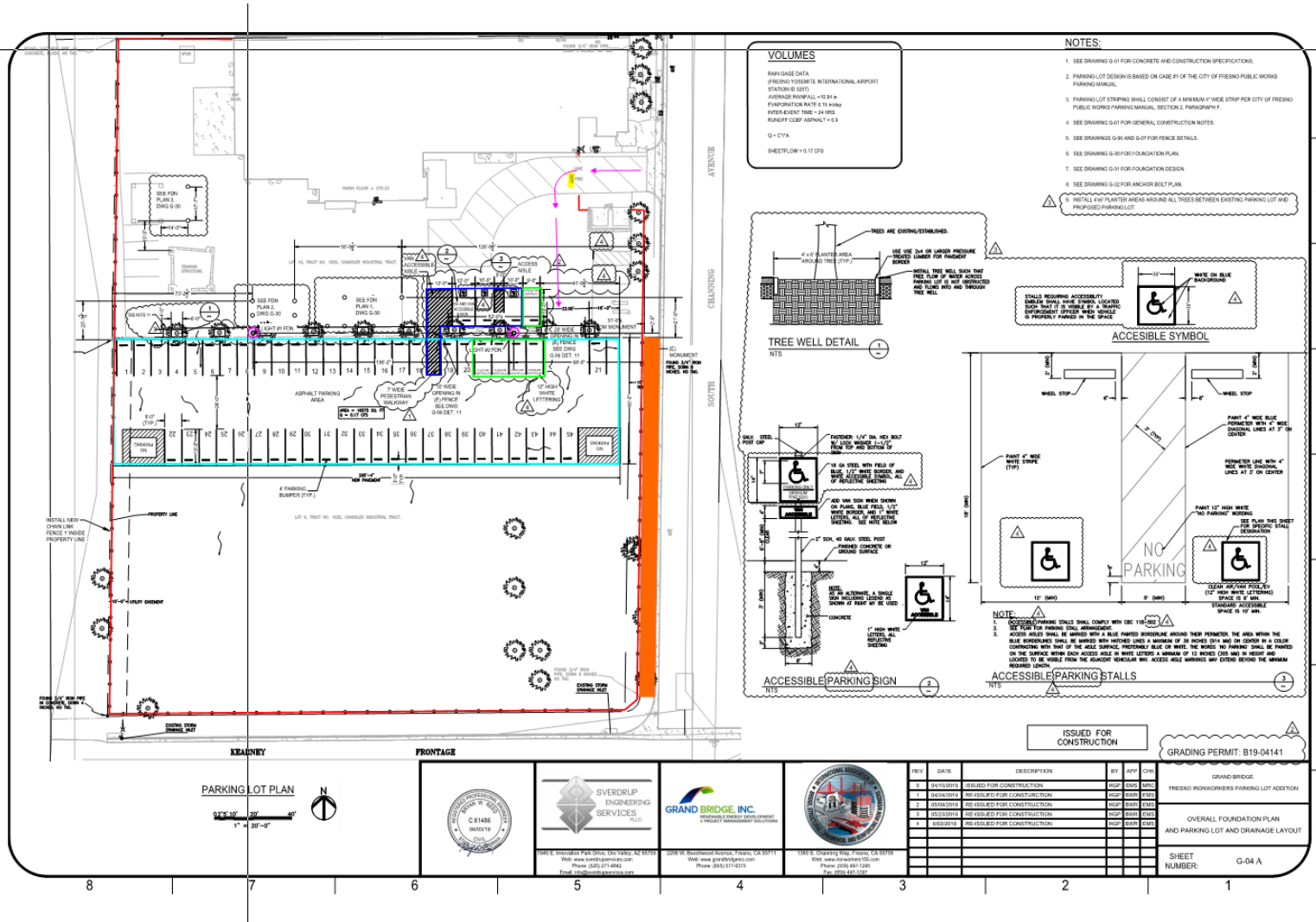
# The Ironworkers Training Facility has funded additional safety measures to protect the trainees:

- ▶ Cameras viewing and recording parking lot traffic.
- ▶ New LED lights on existing building facing the parking lots.
- ▶ New fencing around the property.

# Sidewalk requested by Public Works

- ▶ The requested sidewalk is located outside the protected fence area.
- ▶ All automobile shall be relocated to the new parking lot within the protected fenced area. The new parking lot area shall provide parking for all staff personnel, trainees, and visitors.
- ▶ The proposed sidewalk location will not be beneficial or useful to the facility once the new parking lot is constructed.
- ▶ This facility is located in a Light-Industrial Zoned area, thus not a residential area. A sidewalk poses no benefit at this time.
- ▶ There are no sidewalks at any of the surrounding facilities on S. Channing Way. The newly constructed Military Reserve Facility located across the street on S. Channing Way does not have or constructed any sidewalks.
- ▶ The proposed sidewalk will eliminate 3 historic olive trees at the intersection of S. Channing Way and Kearney Frontage Road.

# Location of Proposed Sidewalk



Three (3) Olive Trees will need to be removed



# Conclusion

- ▶ The Fresno Ironworkers Facility wants to build a new parking lot on its property to ensure that the trainees will be able to access the facility in a safe and secure manner.
- ▶ The new/proposed parking lot addition will be accessed from the existing main entrance and exit of the property and the entire property will be fenced.
- ▶ Since the new (proposed) parking addition will be accessed from the main entrance of the existing parking area, we believe that the addition of the sidewalk along South Channing Avenue will not be beneficial.
- ▶ The Fresno Ironworkers Facility kindly requests that the construction of a sidewalk along S. Channing Way be waived.