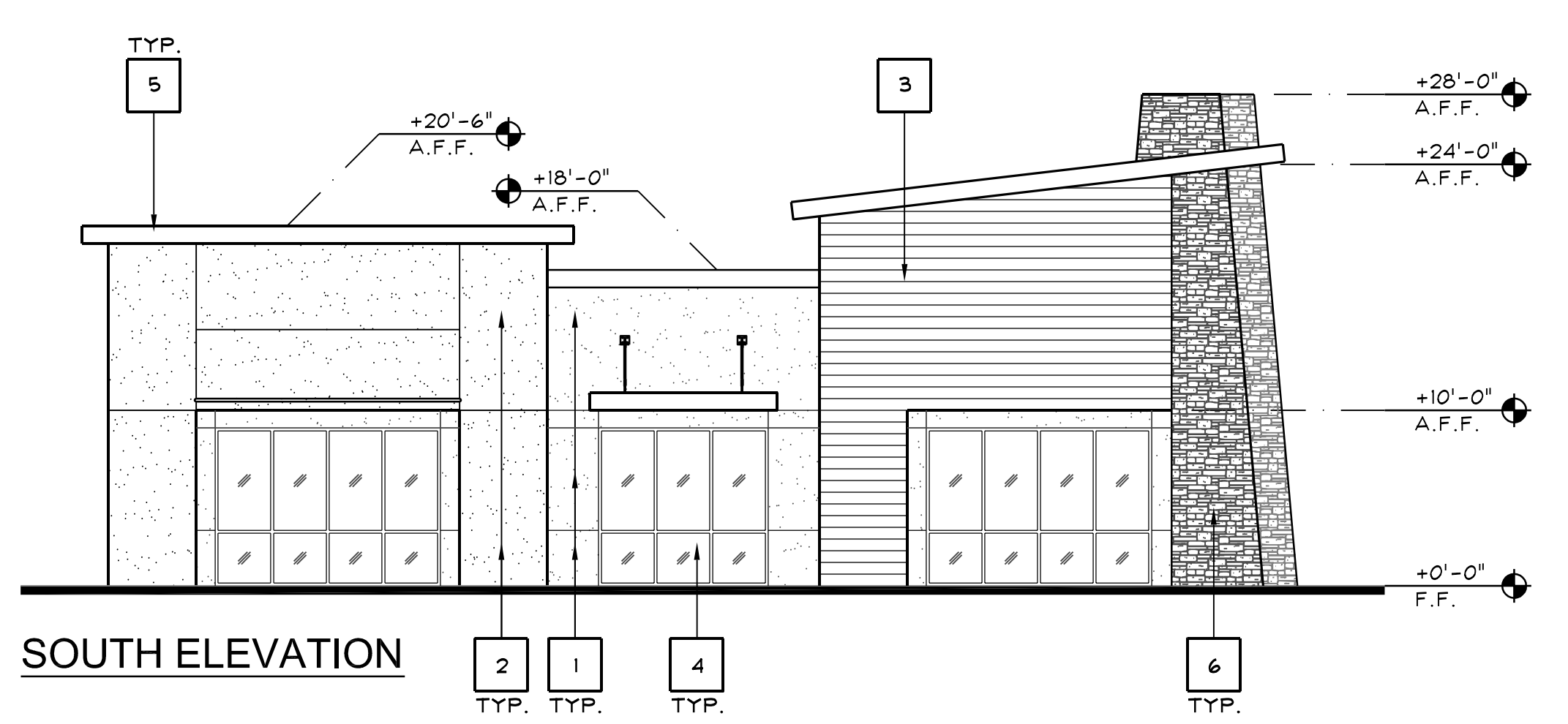
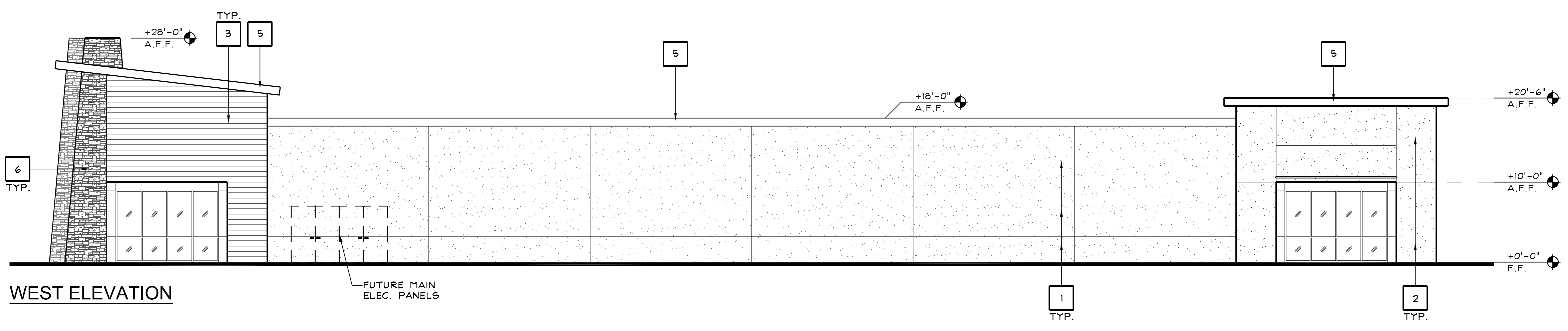


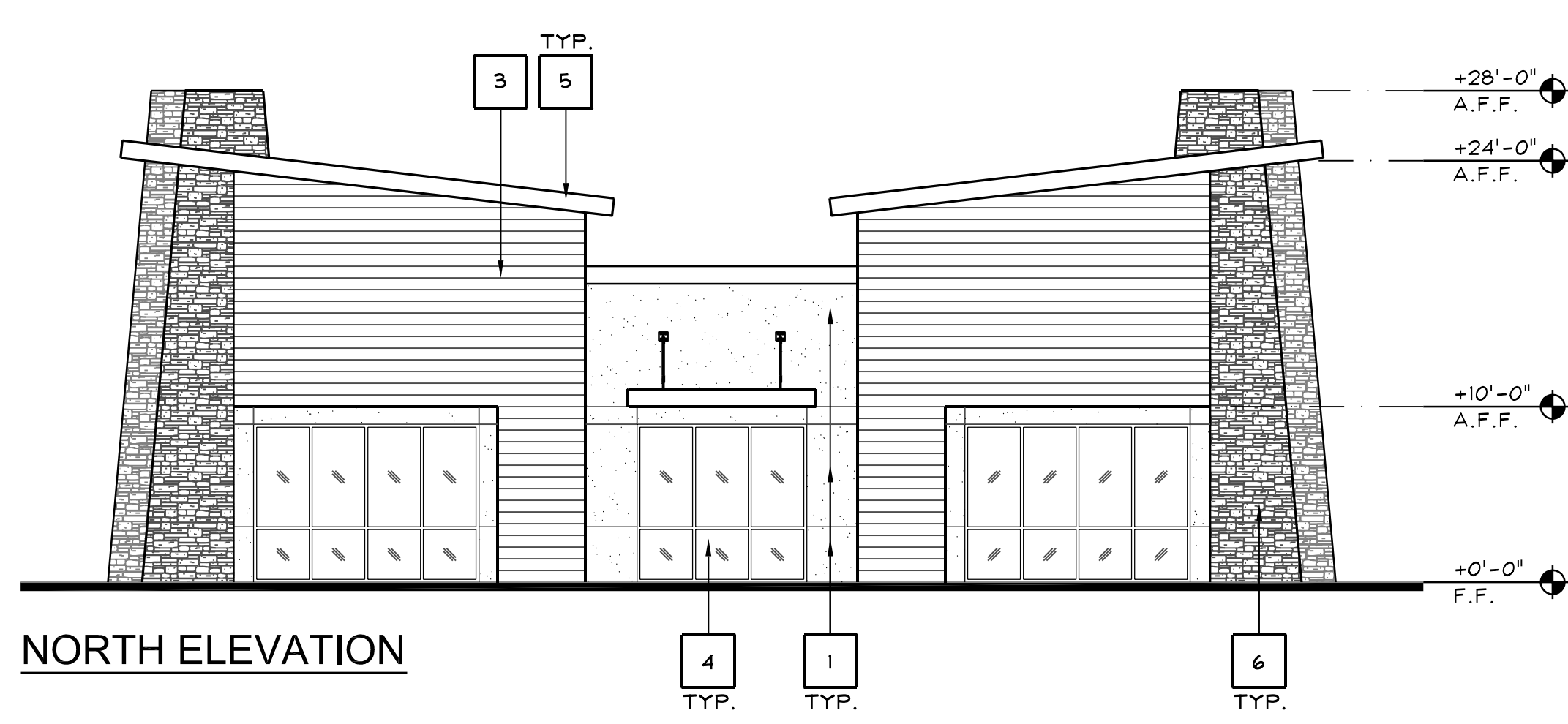
EAST ELEVATION



SOUTH ELEVATION



WEST ELEVATION



NORTH ELEVATION

PROPOSED ELEVATIONS - "BUILDING A"

SCALE: 1/8"=1'-0"

8

KEYNOTES

1	
---	--

2

KEY	MATERIAL	COLOR / FINISH
1	7/8" EXTERIOR CEMENT PLASTER, ELASTOMERIC TOP COAT - FIELD	SHERWIN WILLIAMS #SW 6359 "SOCIALBE"
2	7/8" EXTERIOR CEMENT PLASTER, ELASTOMERIC TOP COAT - ACCENT	SHERWIN WILLIAMS #SW 7001 "MARSHMALLOW"
3	CORRUGATED METAL PANEL	MBCI, 7.2 PANEL, SIGNATURE 300 COLOR: SILVER METALLIC
4	STOREFRONT & GLAZING	ANODIZED FRAMES & GLAZING TO BE CLEAR, NON-TINTED, NON-REFLECTIVE, DOUBLE GLAZED
5	PARAPET CAP	SHERWIN WILLIAMS #SW 7039 "VIRTUAL TAUPE"
6	STONE VENEER	ELDORADO STONE, CLIFFSTONE, "BARLEY"
7	-	-
8	METAL CANOPY	MATCH COLOR TO STOREFRONT FRAMES
-	-	-
-	-	-
-	-	-
-	-	-
-	-	-

EXTERIOR FINISH SCHEDULE

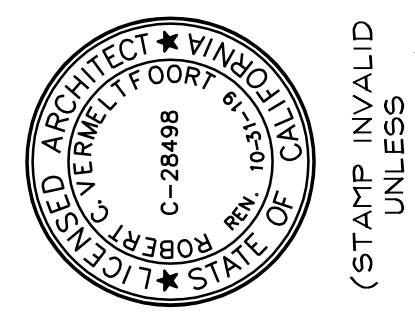
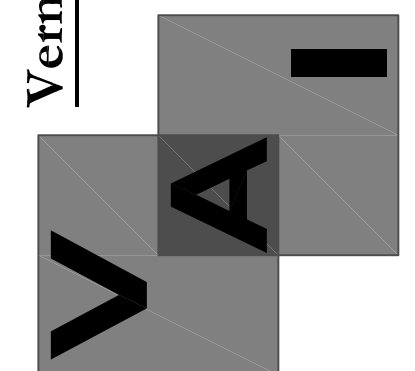
4

DATE	REVISION

This document, the ideas and designs incorporated herein, are solely the property of VAI and is not to be used, in whole or in part for any project or duplication, without written authorization.

© COPYRIGHT 2018

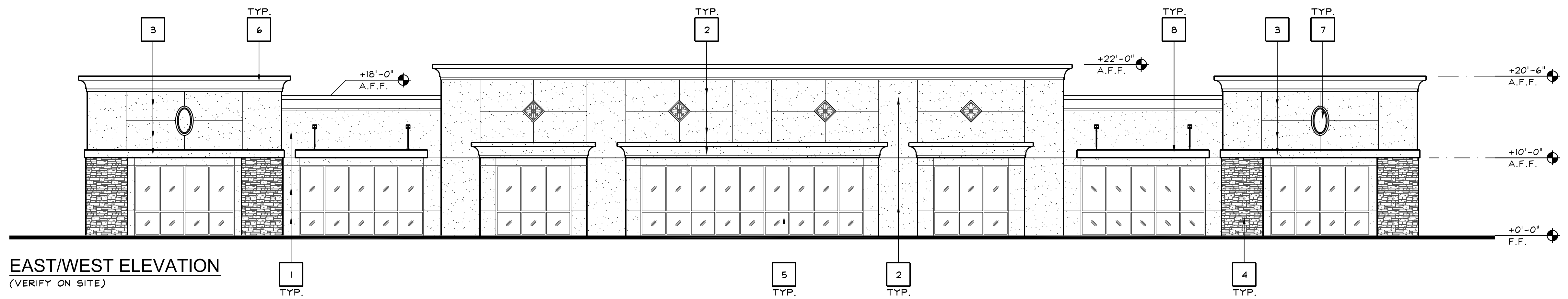
Vermeltoft Architects, Inc.
 Architecture and Planning
 8525 North Cedar Avenue
 Suite 106
 Fresno, California 93720
 Office: 559.432.6744
 Fax: 559.432.6745



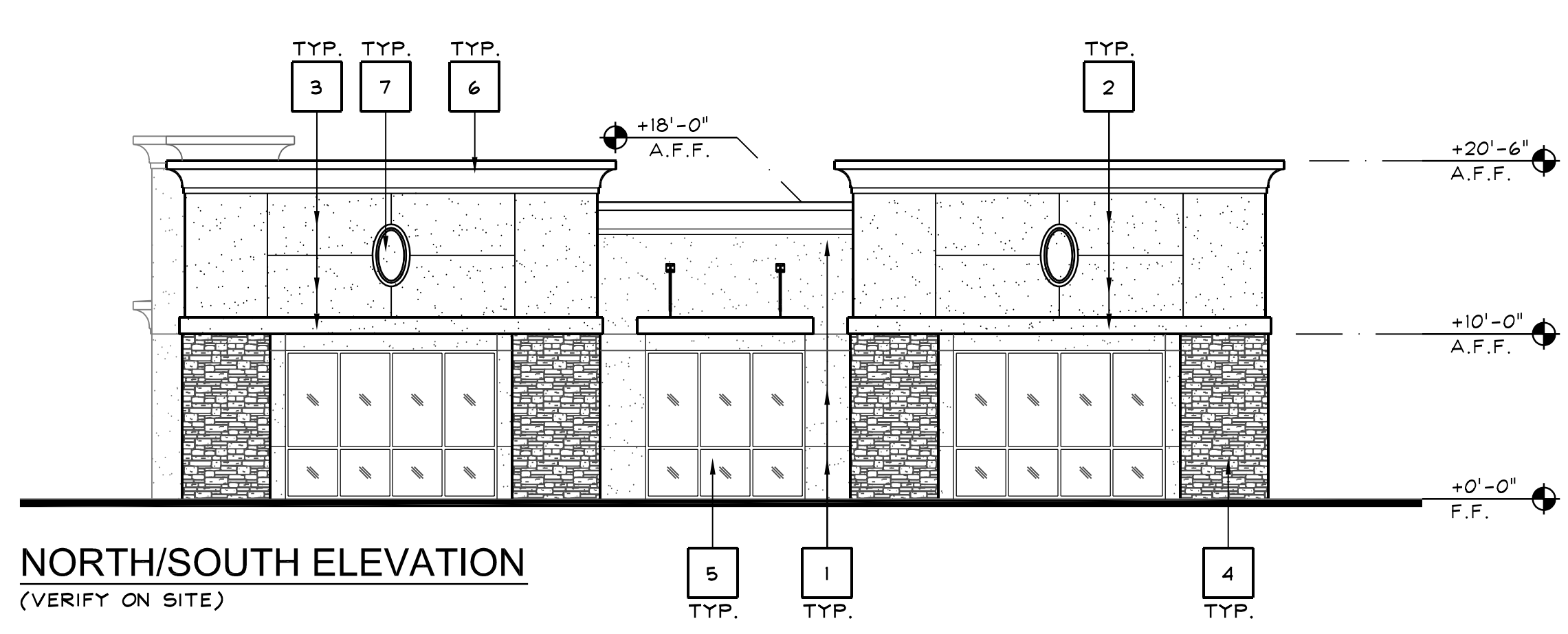
PROPOSED OFFICE BUILDINGS
 2471 E. FIR AVE.
 FRESNO, CALIFORNIA 93720
 PROPOSED ELEVATIONS (BUILDING 'A')

ISSUE DATE:	11-5-18
REV. DATE:	
PROJECT NO.:	18036
DRAWN BY:	NL
SHEET:	

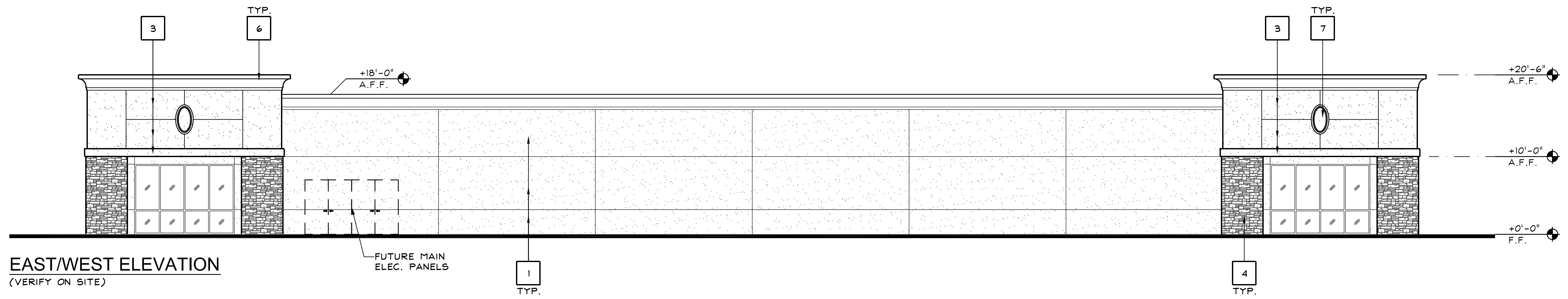
A300



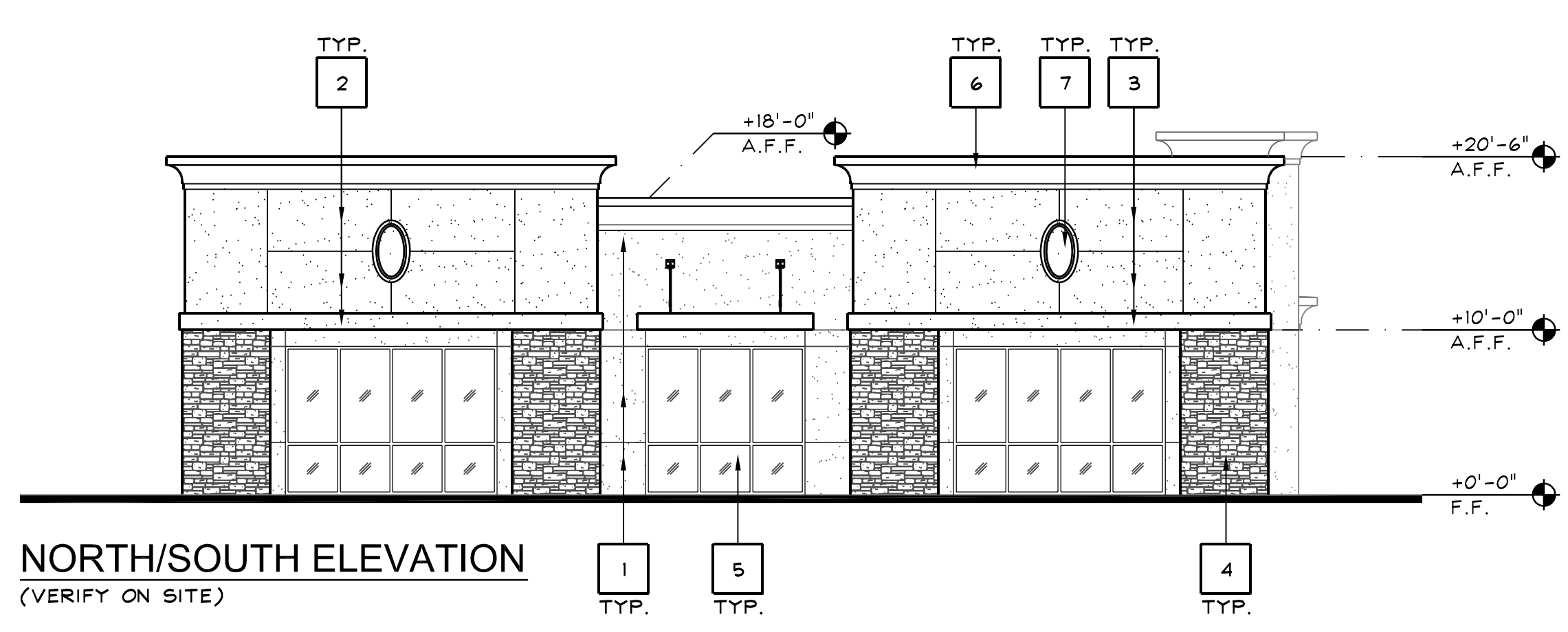
EAST/WEST ELEVATION
(VERIFY ON SITE)



NORTH/SOUTH ELEVATION
(VERIFY ON SITE)



EAST/WEST ELEVATION
(VERIFY ON SITE)



NORTH/SOUTH ELEVATION
(VERIFY ON SITE)

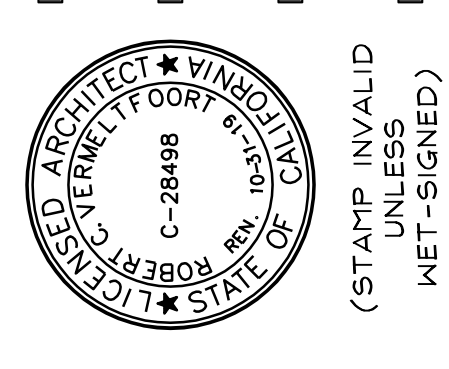
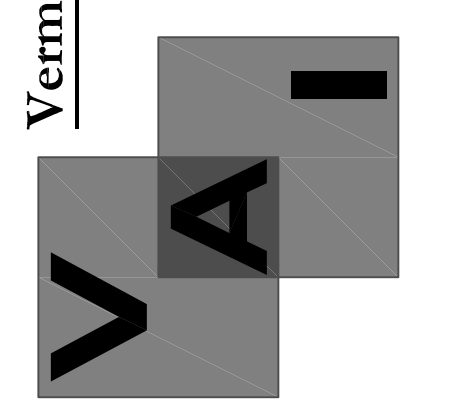
KEYNOTES 1

2

KEY	MATERIAL	COLOR / FINISH
1	7/8" EXTERIOR CEMENT PLASTER, ELASTOMERIC TOP COAT - FIELD	SHERWIN WILLIAMS #SW 7001 "MARSHMALLOW"
2	7/8" EXTERIOR CEMENT PLASTER, ELASTOMERIC TOP COAT - ACCENT	SHERWIN WILLIAMS #SW 6359 "SOCIALBLE"
3	7/8" EXTERIOR CEMENT PLASTER, ELASTOMERIC TOP COAT - ACCENT	SHERWIN WILLIAMS #SW 6376 "GOLD COAST"
4	STONE VENEER	ELDORADO STONE, CLIFFSTONE, "BARLEY"
5	STOREFRONT & GLAZING	ANODIZED FRAMES & GLAZING TO BE CLEAR, NON-TINTED, NON-REFLECTIVE, DOUBLE GLAZED
6	PARAPET CAP	SHERWIN WILLIAMS #SW 7039 "VIRTUAL TAUPE"
7	ACCENT OVAL	CONCRETE DESIGN, INC. "OW18" - PAINTED SHERWIN WILLIAMS #SW 7001 "MARSHMALLOW"
8	METAL CANOPY	MATCH COLOR TO STOREFRONT FRAMES
-	-	-
-	-	-
-	-	-
-	-	-
-	-	-

NO.	DATE	REVISION

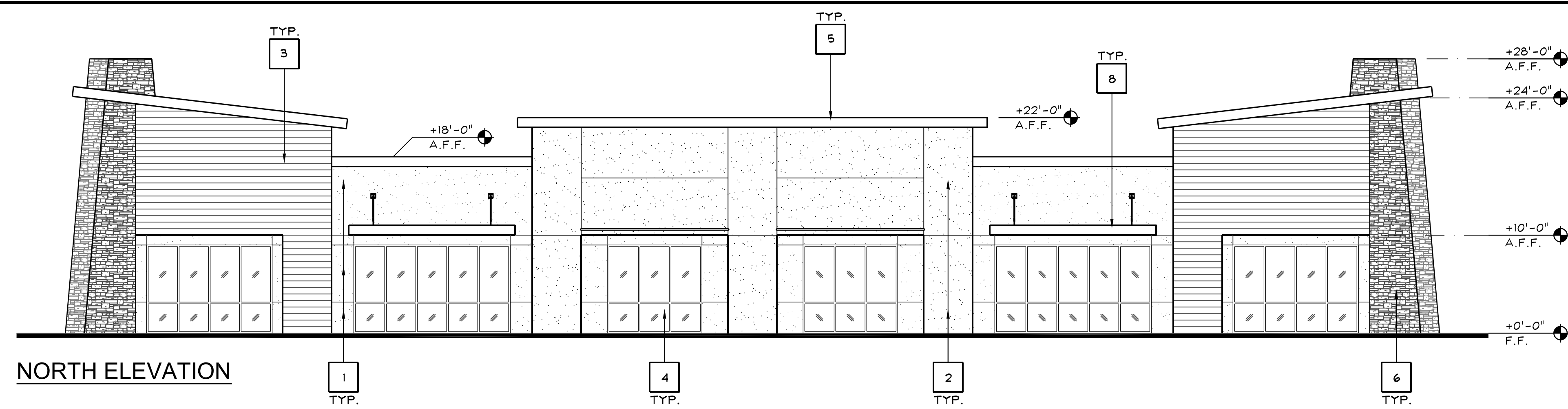
This document, the ideas and designs incorporated herein, are solely the property of VAI and is not to be used, in whole or in part for any project or duplication, without written authorization.
 © COPYRIGHT 2018
Vermelfoort Architects, Inc.
 Architecture and Planning
 8525 North Cedar Avenue
 Suite 106
 Fresno, California 93720
 Office: 559.432.6744
 Fax: 559.432.6745



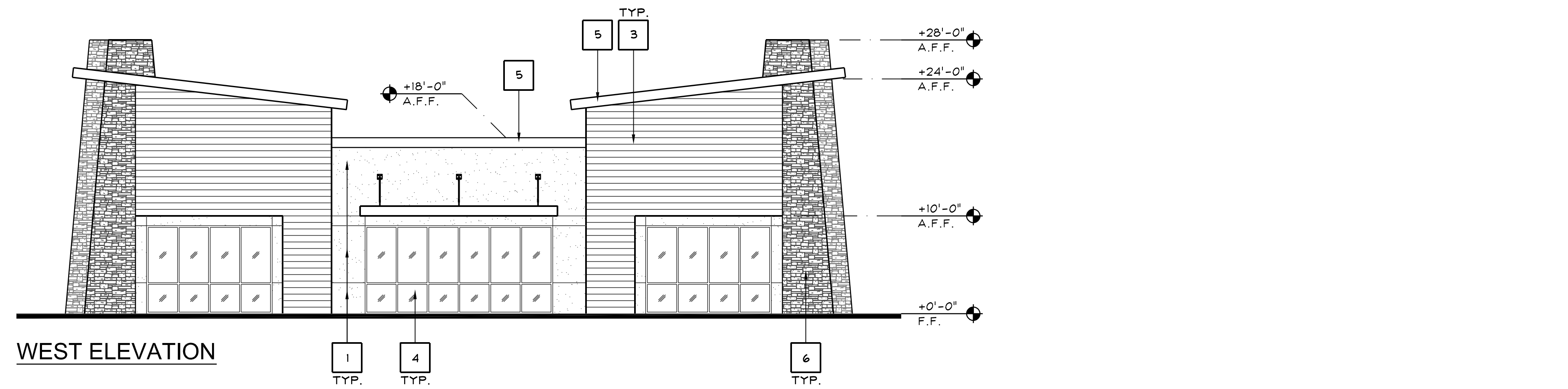
PROPOSED OFFICE BUILDINGS
 2471 E. FIR AVE.
 FRESNO, CALIFORNIA 93720
PROPOSED ELEVATIONS (BUILDING 'B')

ISSUE DATE:	11-5-18
REV. DATE:	
PROJECT NO.:	18036
DRAWN BY:	NL
SHEET:	

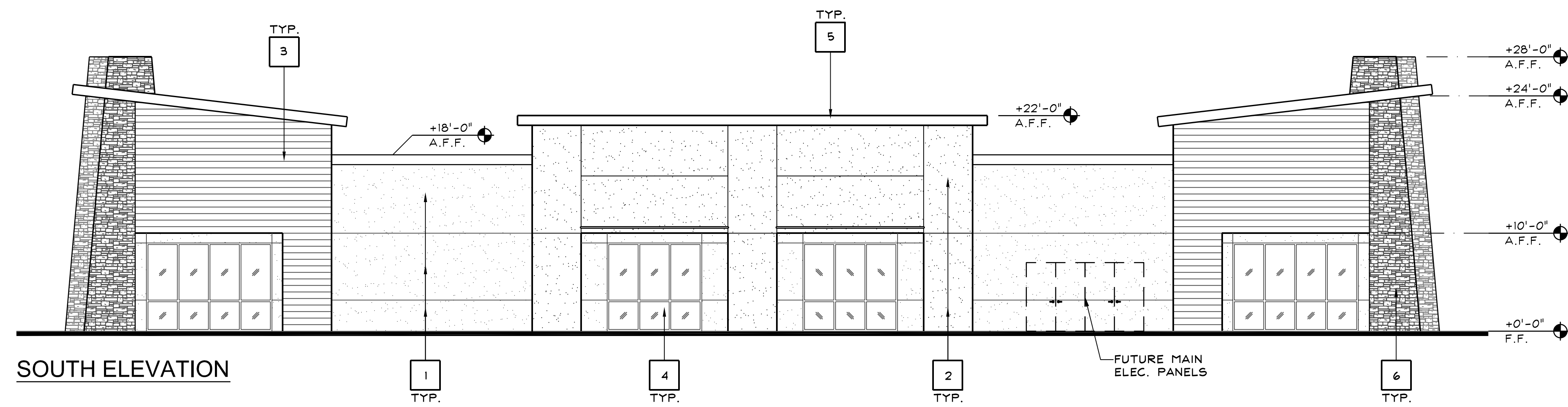
A300



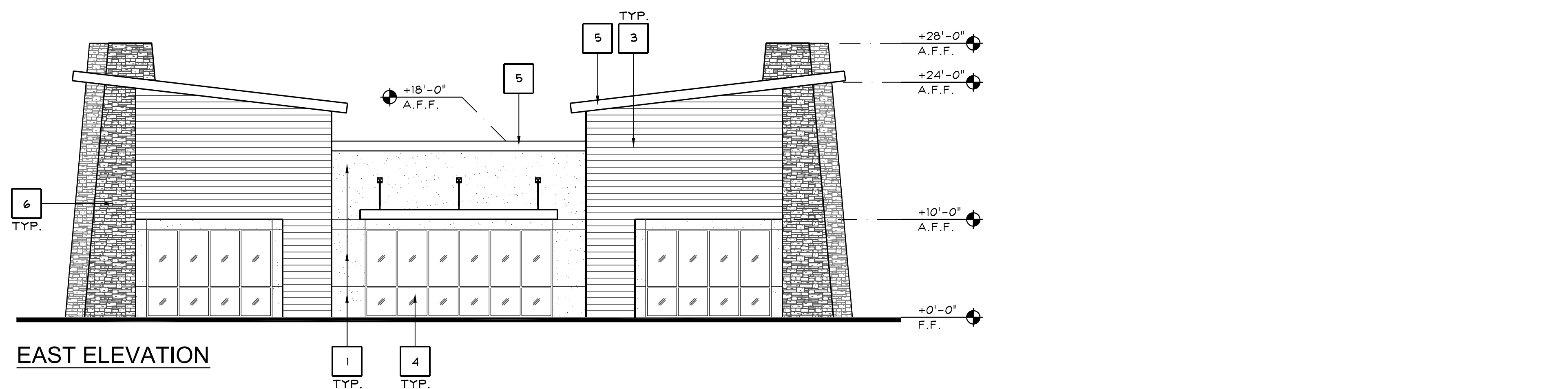
NORTH ELEVATION



WEST ELEVATION



SOUTH ELEVATION



EAST ELEVATION

PROPOSED ELEVATIONS - "BUILDING C"

SCALE: 1/8"=1'-0"

8

KEYNOTES

1

2

KEY	MATERIAL	COLOR / FINISH
1	7/8" EXTERIOR CEMENT PLASTER, ELASTOMERIC TOP COAT - FIELD	SHERWIN WILLIAMS #SW 6359 "SOCIALBE"
2	7/8" EXTERIOR CEMENT PLASTER, ELASTOMERIC TOP COAT - ACCENT	SHERWIN WILLIAMS #SW 7001 "MARSHMALLOW"
3	CORRUGATED METAL PANEL	MBCI, 7.2 PANEL, SIGNATURE 300 COLOR: SILVER METALLIC
4	STOREFRONT & GLAZING	ANODIZED FRAMES & GLAZING TO BE CLEAR, NON-TINTED, NON-REFLECTIVE, DOUBLE GLAZED
5	PARAPET CAP	SHERWIN WILLIAMS #SW 7039 "VIRTUAL TAUPE"
6	STONE VENEER	ELDORADO STONE, CLIFFSTONE, "BARLEY"
7	-	-
8	METAL CANOPY	MATCH COLOR TO STOREFRONT FRAMES
-	-	-
-	-	-
-	-	-
-	-	-
-	-	-

EXTERIOR FINISH SCHEDULE

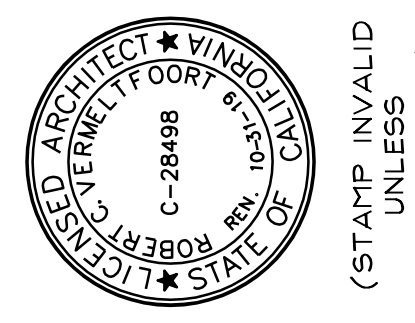
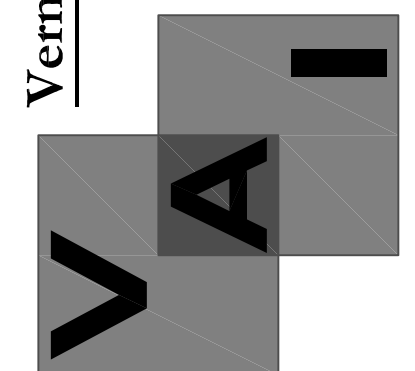
4

NO.	DATE	REVISION

This document, the ideas and designs incorporated herein, are solely the property of VAI and is not to be used, in whole or in part for any project or duplication, without written authorization.

© COPYRIGHT 2018

Vermelfoort Architects, Inc.
Architecture and Planning
8525 North Cedar Avenue
Suite 106
Fresno, California 93720
Office: 559.432.6744
Fax: 559.432.6745



PROPOSED OFFICE BUILDINGS
2471 E. FIR AVE.
FRESNO, CALIFORNIA 93720
PROPOSED ELEVATIONS (BUILDING 'C')

ISSUE DATE:	11-5-18
REV. DATE:	
PROJECT NO.:	18036
DRAWN BY:	NL
SHEET:	

A300