

Measure P Five-Year Evaluation Subcommittee Findings

City of Fresno Parks, Recreation and Arts Commission (PRAC) | FY 2022–2026

April 20th, 2026



Agenda

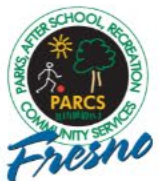
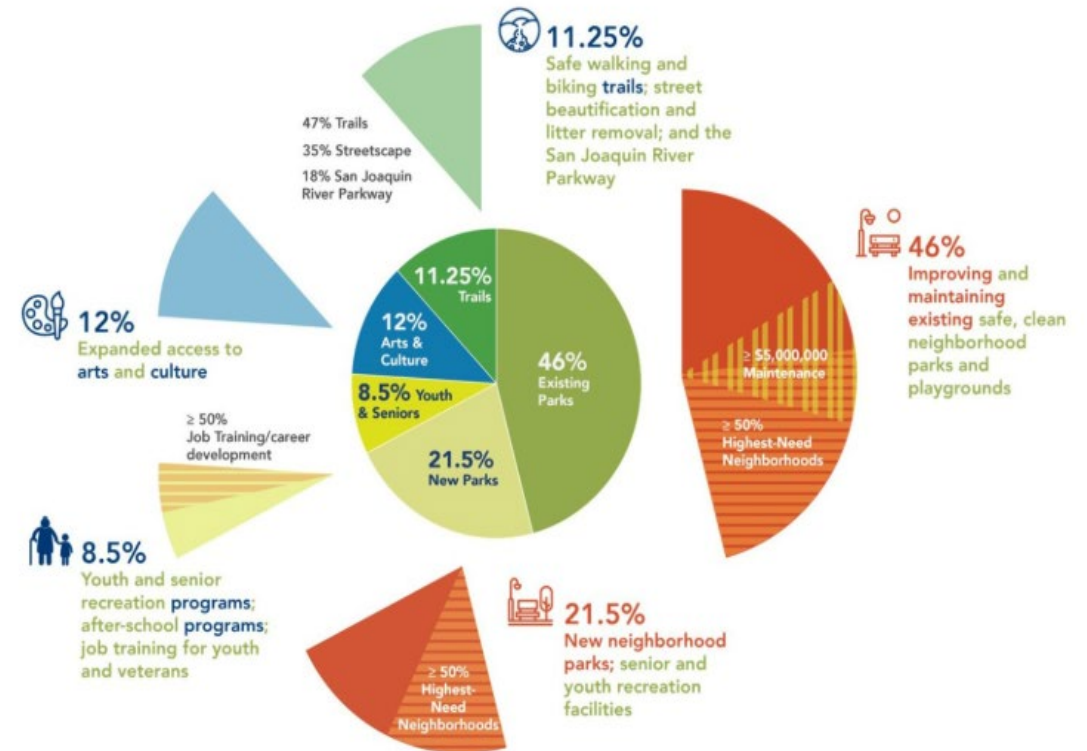
- Background
- What Measure P requires and how funds are allocated
- Section A: Compliance with Proportional Allocation
- Section B: Capital and Maintenance Project Status
- Section C: Resident Access and Performance Indicators
- Section D: Audit Oversight and Corrective Actions
- Conclusion and Next Steps



Section A: Compliance with Proportional Allocation

*Commissioner
Leon-Barraza*

- What is Measure P?



Section A: Compliance with Proportional Allocation

*Commissioner
Leon-Barraza*

- Finding 1. City has met all proportional allocation requirements (FY 2022–2026)
- Finding 2. Under the Cultural Arts programs category, the City of Fresno has expanded access to culture and arts funds experience overall to city residents.



Section A: Compliance with Proportional Allocation

*Commissioner
Leon-Barraza*

- Finding 3. The City of Fresno can improve the distribution of funds to existing and emerging organizations that serve communities of color in Southeast, Southwest, and Southcentral neighborhoods in Fresno by enhancing its outreach efforts, provide more technical assistance and improve its documentation of how these programs are reaching those neighborhoods; Provide annual funding access as required.



Section B: Capital and Maintenance Project Status

*Commissioner
Duran*

Finding 1. Measure P has transitioned Fresno's park system

- 80% of parks were in fair/poor condition before Measure P; \$112M backlog now being addressed
- 25 projects completed ,11 in construction, 68 in design,19 in planning/initiation



Section B: Capital and Maintenance Project Status

*Commissioner
Duran*

Finding 2. Measure P has expanded its park infrastructure and services

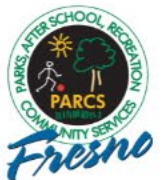
- FY 2024 project portfolio: 123 active capital projects (up from 49 in FY22)
- 25 completed • 11 in construction • 68 in design • 19 in planning/initiation



Section C: Resident Access and Performance

*Commissioner
Duran*

- Finding 1. Participation and accessibility have grown significantly
- 33% of residents (182,599 people) live within half-mile of a park (2024 GIS baseline)
- Adaptive Recreation attendance up 141%; Senior Program participation up 47%
- Youth Sports Fee Waiver serves 61% of all youth sports participants
- 2,961 new street trees and 12.3 miles of new sidewalk added in FY 2024



Section D: Audit Oversight and Corrective Actions

*Commissioner
Dohlin*

Finding 1. Proactive equity planning now embedded in Measure P oversight:

- Annual independent audits required; every capital project assigned a traceable audit number
- Corrective action taken: Highest-Need Neighborhood map redefined (Nov. 2024)
- Informed by 1,427 community survey responses; now weights park condition and poverty more heavily
- At least 50% of park funds directed to most underserved census tracts



Conclusion

Five years in, Fresno parks are safer, more equitable, and better maintained, along with accountability structures and plans in place to keep improving.

