

RECEIVED

2017 MAY 23 PM 1 22

Agenda Item: ID17-702 (1-M)

Date: 5/25/17

CITY CLERK, FRESNO

FRESNO CITY COUNCIL



Supplemental Information Packet

Agenda Related Item(s) – ID17-702 (1-M)

**Contents of Supplement: Exhibit "A" and Resolution of Intention Feature Map
Item(s)**

Title: **RESOLUTION** - Of Intention to annex Final Tract Map No. 5513, Annexation No. 137, to the City of Fresno Community Facilities District No. 2 (south of East Church Avenue between South Minnewawa and Clovis Avenues); and setting the public hearing for June 22, 2017 at 10:00 a.m. (Council District 5)

Supplemental Information:

Any agenda related public documents received and distributed to a majority of the City Council after the Agenda Packet is printed are included in Supplemental Packets. Supplemental Packets are produced as needed. The Supplemental Packet is available for public inspection in the City Clerk's Office, 2600 Fresno Street, during normal business hours (main location pursuant to the Brown Act, G.C. 54957.5(2)). In addition, Supplemental Packets are available for public review at the City Council meeting in the City Council Chambers, 2600 Fresno Street. Supplemental Packets are also available on-line on the City Clerk's website.

Americans with Disabilities Act (ADA):

The meeting room is accessible to the physically disabled, and the services of a translator can be made available. Requests for additional accommodations for the disabled, sign language interpreters, assistive listening devices, or translators should be made one week prior to the meeting. Please call City Clerk's Office at 621-7650. Please keep the doorways, aisles and wheelchair seating areas open and accessible. If you need assistance with seating because of a disability, please see Security.



PUBLIC WORKS DEPARTMENT
 TRAFFIC AND ENGINEERING SERVICES DIVISION
 FEATURES TO BE ADDED BY ANNEXATION NO. 137
 COMMUNITY FACILITIES DISTRICT NO. 2



NOT TO SCALE
 April 25, 2017

FINAL TRACT MAP NO. 5513
"PHASE II OF VESTING TENTATIVE
TRACT MAP NO. 5171"



LANDSCAPE AND IRRIGATION:
 BUFFER/PARKWAYS/ENTRANCE MEDIAN
 TOTAL = 22,551 SF



LARGE TREES = 17 EA



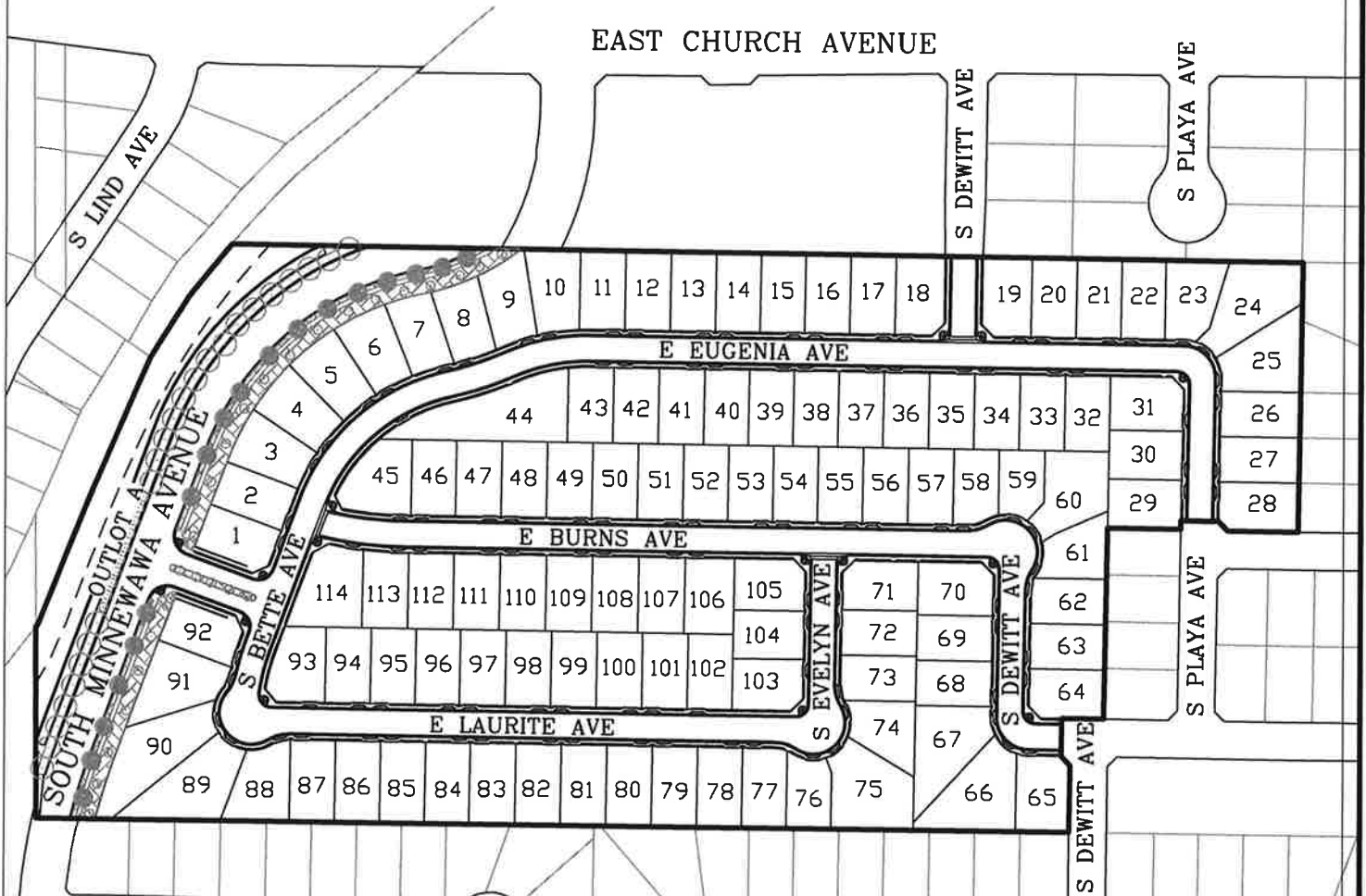
SMALL TREES = 31 EA



OUTLOT A:
 TREES ONLY = 8,008 SF
 LARGE TREES = 23 EA



SMALL TREES = 10 EA



CITY OF FRESNO MAINTENANCE CFD11 ANNEXATION

Legend

- State Routes
- Rail Road
- Street Centerline
- CFD11
- City Boundary Limits

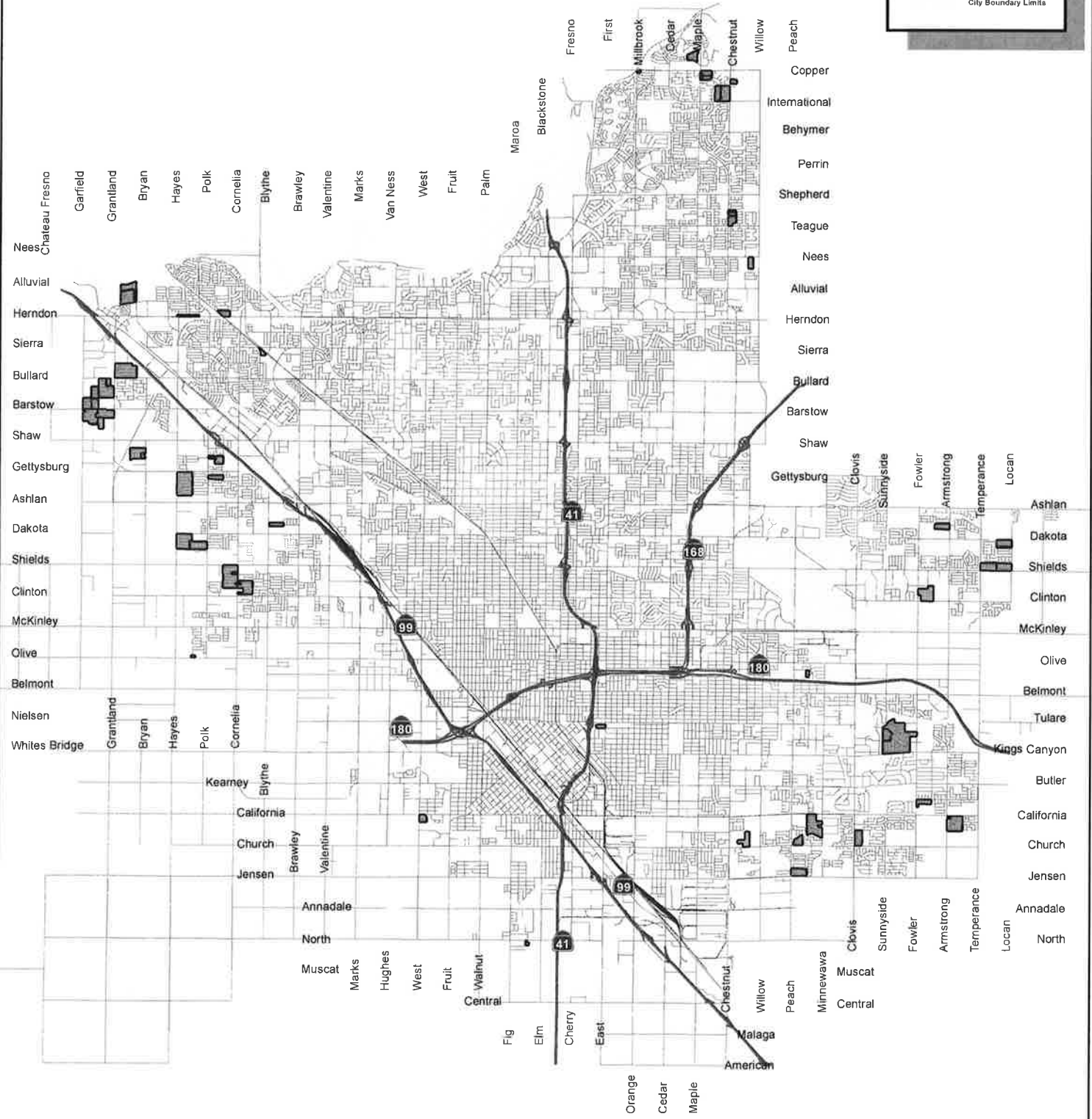


Exhibit A

Date: 3/13/2015