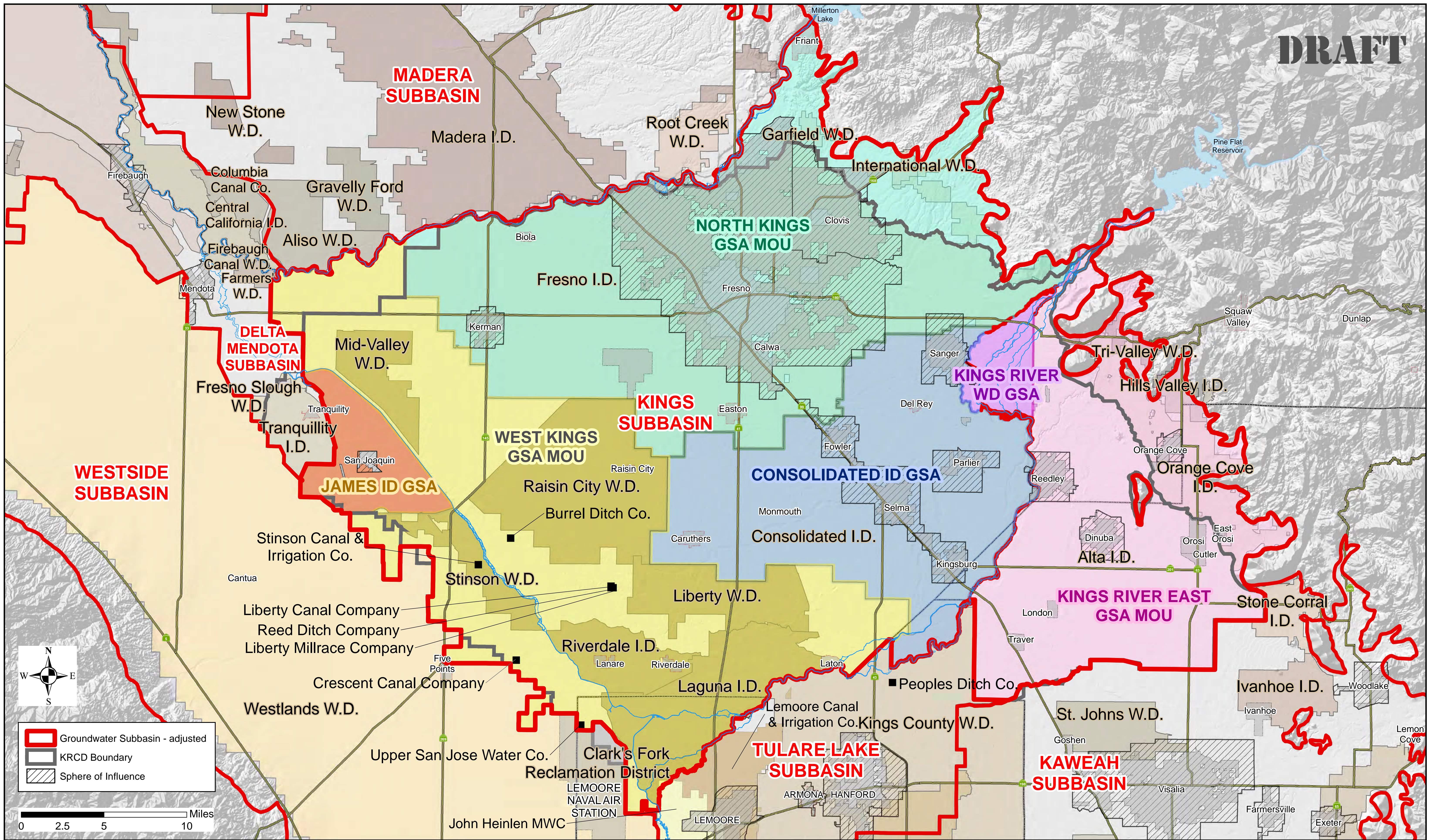


**DRAFT**



**DISCLAIMER:**  
 This is a preliminary draft map. It will be edited frequently. Map features have been added, removed or reshaped in order to develop proposed modifications to DWR Bulletin 118 groundwater subbasin boundaries and to refine currently proposed regional GSA coverage areas.

**Kings Groundwater Subbasins  
 Proposed SGMA Coordinating MOUs**

