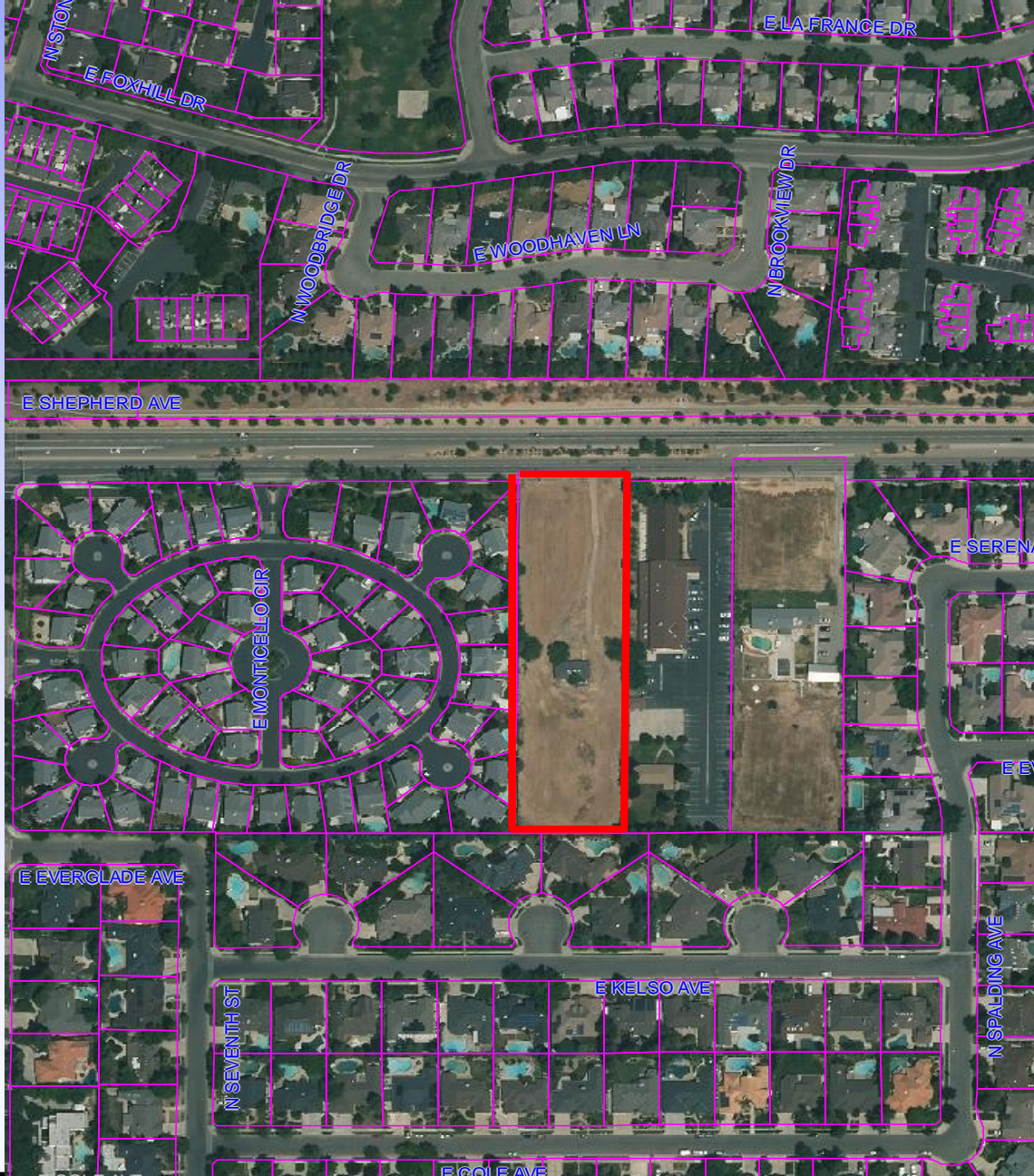


**CONSIDERATION OF  
PLAN AMENDMENT APPLICATION NO. A-16-005,  
REZONE APPLICATION NO. R-16-006,  
DEVELOPMENT PERMIT REVIEW APPLICATION  
NO. D-16-031, AND RELATED ENVIRONMENTAL  
FINDING FOR ENVIRONMENTAL ASSESSMENT  
NO. A-16-005/R-16-006/D-16-031**

Filed by Nick Yovino Jr. of California Land Consulting







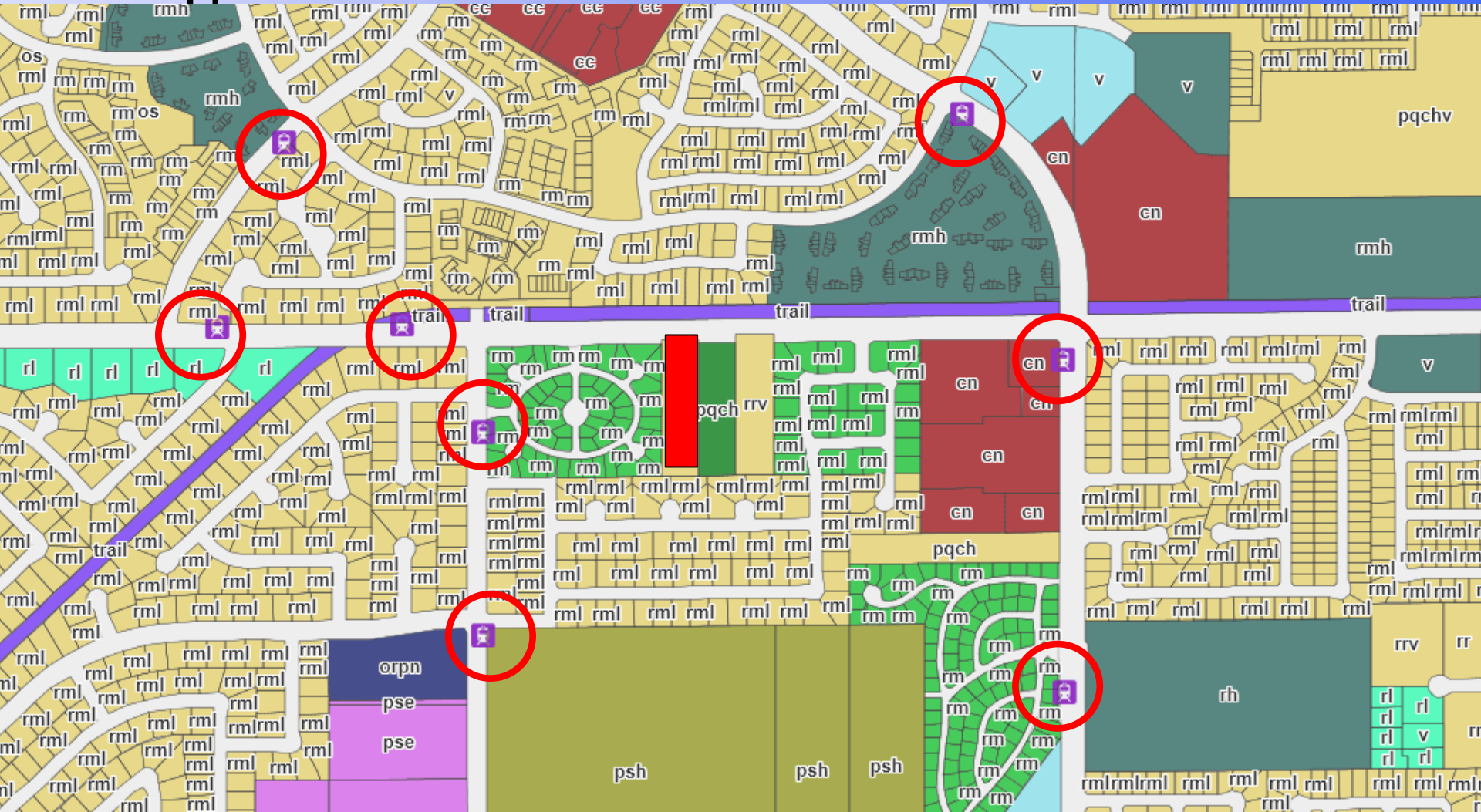
**'DREW COURT'**  
A LUXURY APARTMENT ENCLAVE  
DEVELOPED BY:  
DREW COURT, LLC.

SITE PLAN   
SCALE: 1" = 20'-0"

# Site Rendering

# Staff Supports the Plan Amendment

- General Plan Goal No. 10 of the Fresno General Plan emphasizes increased land use intensity at densities supportive of transit.





# Staff Supports the Plan Amendment

- **General Plan Implementing Policy LU-5-d** calls for the promotion of medium-high density residential uses to optimize use of available or planned public facilities and services to provide housing opportunities with convenient access to employment, shopping, services and transit stops.

