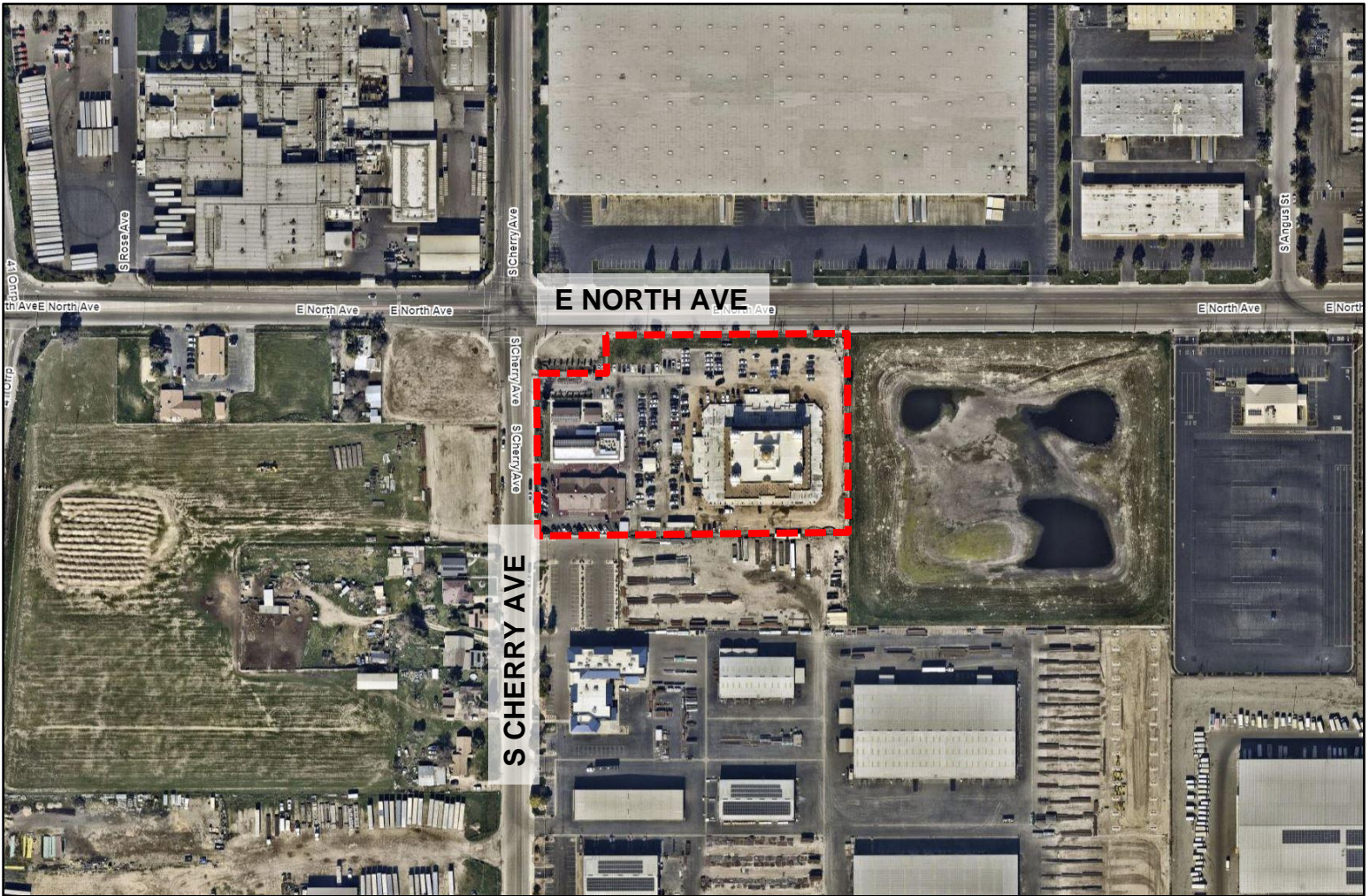


Exhibit B

# AERIAL PHOTO



## PLANNING AND DEVELOPMENT DEPARTMENT

### Application

Variance Application No. P24-01598

### APN:

329-190-21S

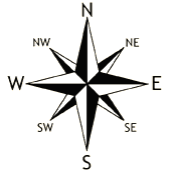
South side of East North Avenue and east side of South Cherry Avenue

### Zone District


IH/UGM (*Heavy Industrial/Urban Growth Management*)

### Land Use Designation

Employment – Heavy Industrial



### LEGEND

 **Subject Property**  
±5.54 acres