

Exhibit C-2
Project Elevations Rendering

City Council:
Costco Commercial Center Project



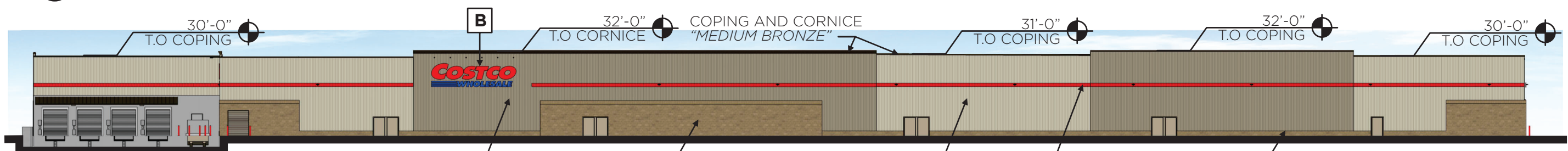
1 WEST ELEVATION
SCALE: 1" = 40'

SPLIT FACE CMU "TAN" VERTICAL METAL PANEL "METALLIC CHAMPAGNE" VERTICAL RIBBED PANEL "SANDSTONE"



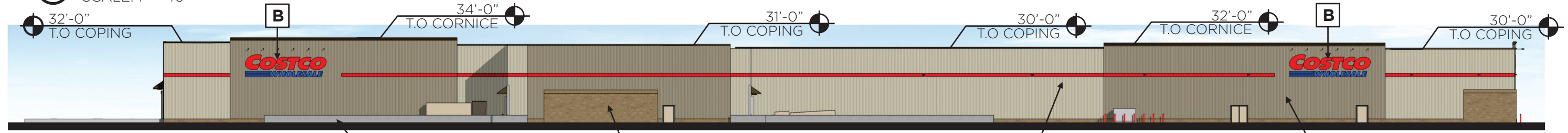
2 NORTH ELEVATION
SCALE: 1" = 40'

OVERHEAD DOORS "MEDIUM BRONZE" VERTICAL RIBBED PANEL "SANDSTONE" ACCENT METAL "MEDIUM BRONZE" SPLIT FACE CMU "TAN" VERTICAL METAL PANEL "METALLIC CHAMPAGNE"



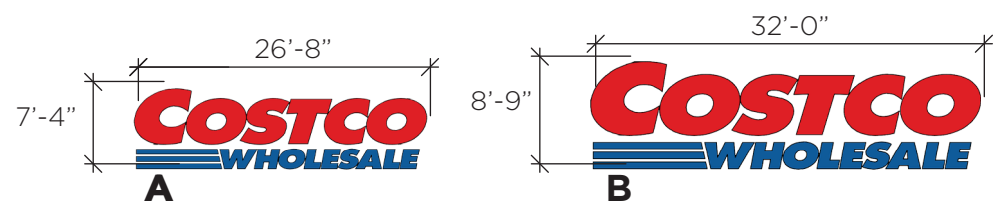
3 EAST ELEVATION
SCALE: 1" = 40'

VERTICAL RIBBED PANEL "METALLIC CHAMPAGNE" SPLIT FACE CMU "TAN" VERTICAL RIBBED PANEL "SANDSTONE" STRIPE "COSTCO RED" CMU STEM WALL "TAN"



4 SOUTH ELEVATION
SCALE: 1" = 40'

CONCRETE STEM WALL "NATURAL" SPLIT FACE CMU "TAN" VERTICAL RIBBED PANEL "SANDSTONE" VERTICAL METAL PANEL "METALLIC CHAMPAGNE"



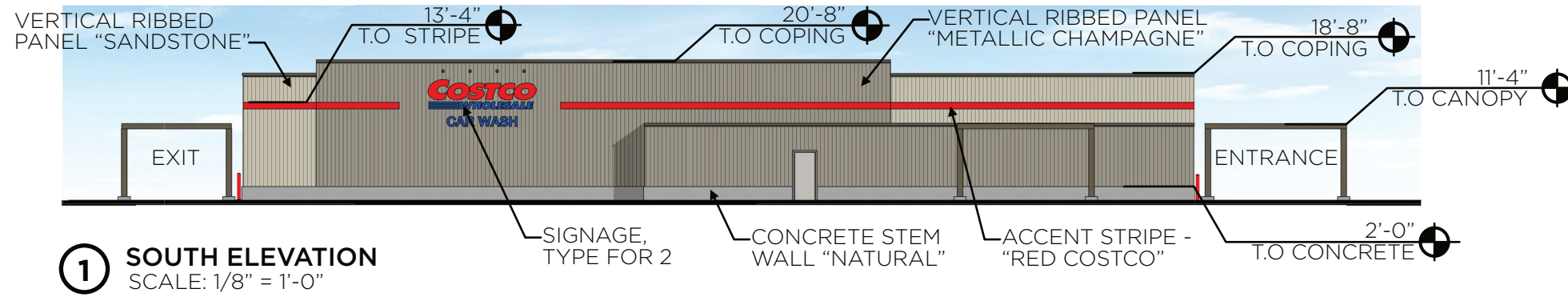
5 SIGN PACKAGE

SIGN TABLE						
IDENTITY	QUANTITY	SIGN	SIZE	AREA (EACH)	TOTAL SF	
A	1	COSTCO WHOLESALE	5'-0" C	175 SF	175 SF	
B	3	COSTCO WHOLESALE	6'-0" C	280 SF	840 SF	
TOTAL SIGN AREA:					998 SF	

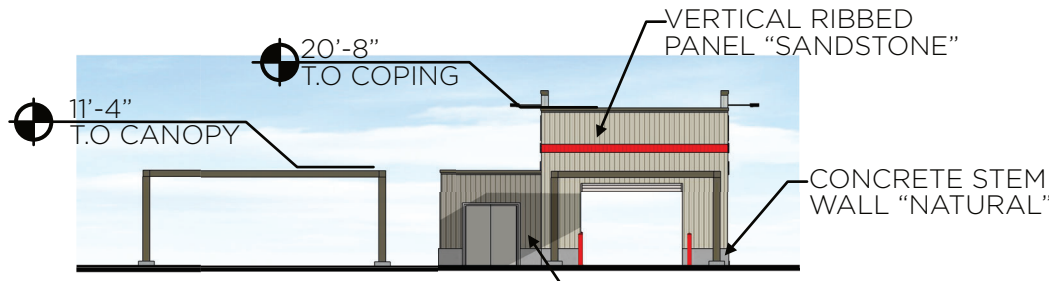


6 ENTRY CANOPY ELEVATION

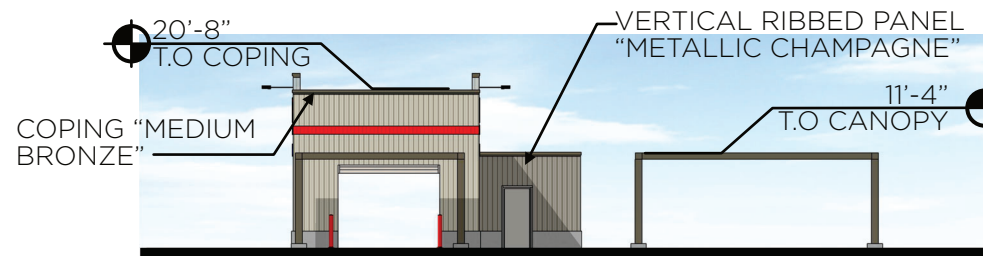
SPLIT FACE CMU "TAN" VERTICAL METAL PANEL "METALLIC CHAMPAGNE"



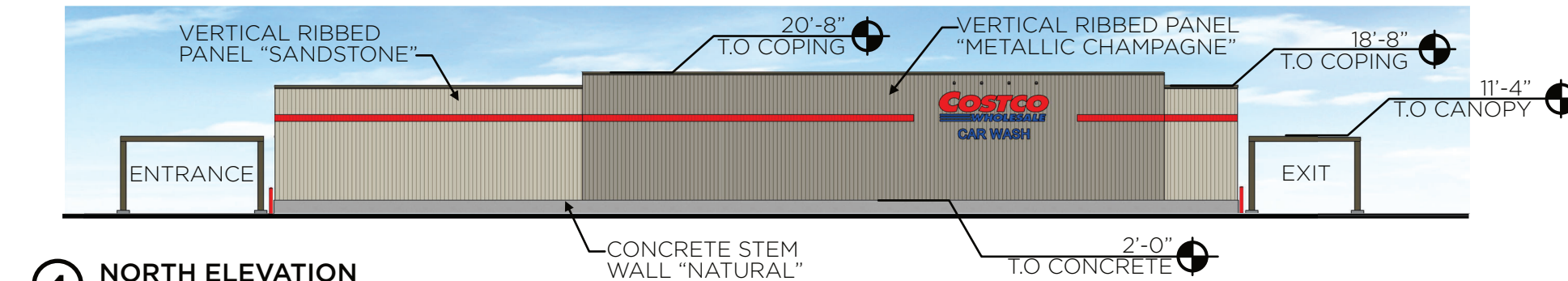
1 SOUTH ELEVATION
SCALE: 1/8" = 1'-0"



2 EAST ELEVATION
SCALE: 1/8" = 1'-0"



3 WEST ELEVATION
SCALE: 1/8" = 1'-0"



4 NORTH ELEVATION
SCALE: 1/8" = 1'-0"

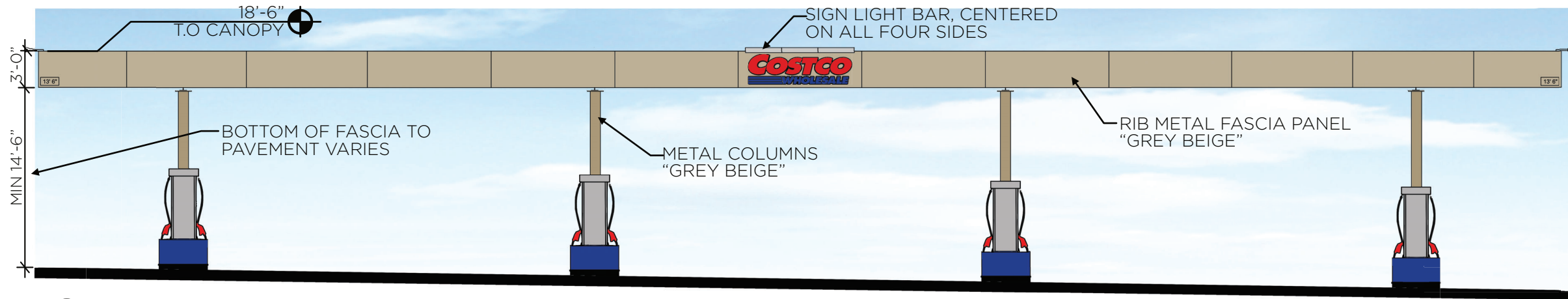
SIGN TABLE

QUANTITY	SIGN	SIZE	AREA (EACH)	TOTAL SF
2	COSTCO WHOLESALE	3'-6" x 10'-6"	37 SF	74 SF

TOTAL SIGN AREA: **74 SF**



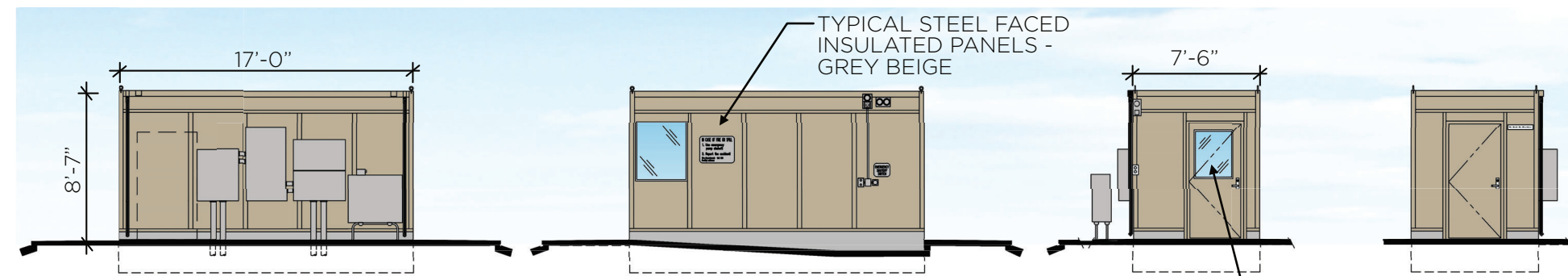
5 SIGNS
SCALE: 1/4" = 1'-0"



1 EAST/ WEST ELEVATION
SCALE: 1/8" = 1'-0"



2 NORTH/ SOUTH ELEVATION
SCALE: 1/8" = 1'-0"



4 CONTROLLER ENCLOSURE ELEVATIONS
SCALE: 1/8" = 1'-0"

SIGN TABLE				
QUANTITY	SIGN	SIZE	AREA (EACH)	TOTAL SF
4	COSTCO WHOLESALE	2'-5" x 8'-6"	21 SF	84 SF
TOTAL SIGN AREA:				84 SF



5 CANOPY SIGNS
SCALE: 1/4" = 1'-0"