



# UPDATE

Council Workshop – August 11, 2022



FRESNO YOSEMITE  
INTERNATIONAL AIRPORT

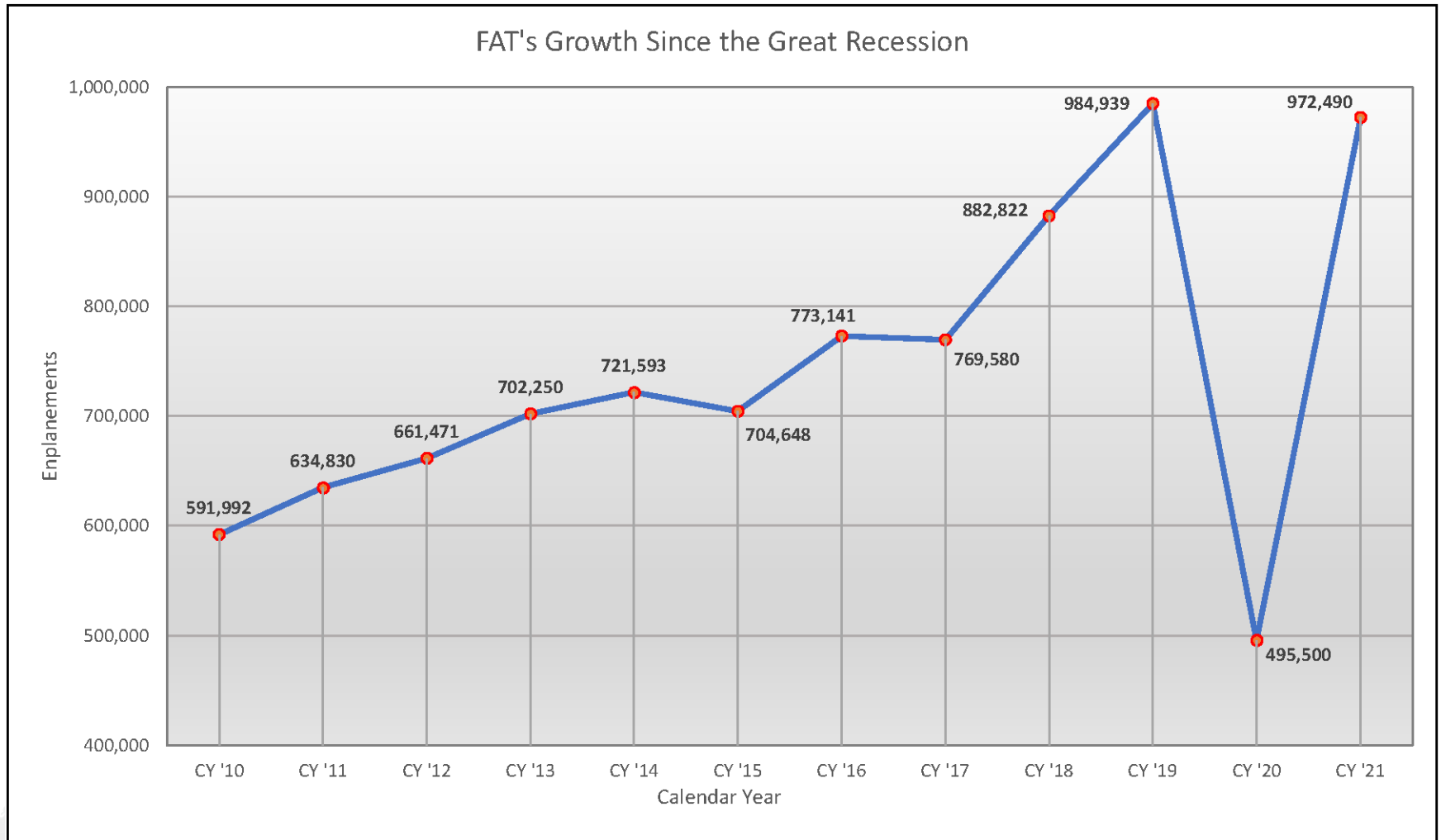


# FRESNO YOSEMITE INTERNATIONAL AIRPORT





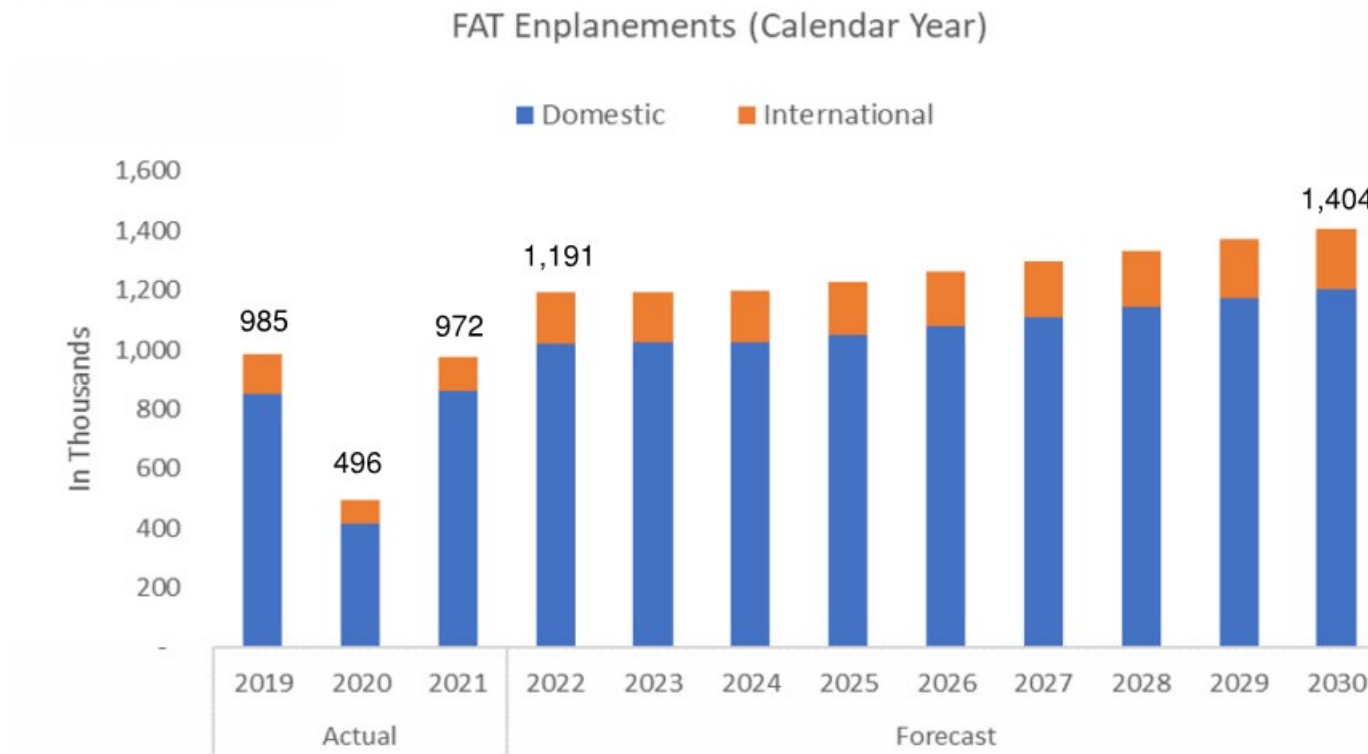
# Historical Growth





## Forecast Growth

- Passenger traffic is forecast to increase 18% from 2022 through 2030





## **FATforward Overview**

- **Parking Garage (complete)**
- **Terminal East Apron Expansion**
- **Terminal Expansion**
- **Runway 11L-29R Reconstruction**
- **Air Traffic Control Tower Replacement**





## Parking Garage

- Supports increased passenger growth post-pandemic
- Opened in November 2021
- Provides 920 spaces on four levels
- 678 Spaces covered (levels 1-3)
- Cost: \$32M
- Funded by iBank Loan
- Remaining Work:
  - Sustainable Facility – ParkSmart Designation (In Process)
  - Solar canopies on fourth floor (In Process)
  - Art Element on elevator tower (In Process)





## Parking Garage Nearing Completion





## LED Lighting







## Automated Parking Guidance System





## Airport Project Labor Agreement (PLA) FAT Parking Garage

- Airports Department worked with the City Council, City Attorney and City Manager to develop a PLA for the *FATforward* projects.
  - **Airport Project Labor Agreement**
    - » *Parking Garage*
    - » *Terminal Expansion*
  
- The Airports PLA helped set the foundation for the current Citywide Community Workforce Agreement that complies with new federal guidelines and will be used going forward.
  - **Citywide Community Workforce Agreement**
    - » *East Apron Reconfiguration*
    - » *Runway 11L-29R Reconstruction*
    - » *Air Traffic Control Tower Replacement*
    - » *Future Projects*





## FAT Parking Garage PLA Performance

- Zero work stoppages or labor conflicts
- 9 of the 20 subcontractors were local
- 91,720 hours by 461 workers who earned \$3,715,673 in wages and benefits
  - 29,109 hours (32%) by 157 City of Fresno residents earning \$1,175,421
  - 58,808 hours (55%) by workers residing in Fresno & Madera Counties
- 25% of the labor hours performed by Apprentices
  - One Apprentice for every 3 Journeymen
  - 53% of apprentice hours by workers residing in zip codes where the median income is less than 50% of the median income for Fresno County
  - Another 29% of apprentice hours by workers residing in zip codes where the median income is below, or unemployment rate is above, Fresno County's





## Apprentice Utilization

Craft	Apprentice Hours	Journey Hours	Grand Total	Apprentice Percentage by Craft
Carpenters	7,483	24,276	31,759	24%
Laborers	3,157	16,601	19,758	16%
Electricians	5,180	6,045	11,225	46%
Plumbers	1,582	5,345	6,927	23%
Operating Engineers	491	4,200	4,691	10%
Cement Masons	101	2,209	2,310	04%
Brick Layers	414	1,246	1,660	25%
Ironworkers	3,501	6,130	9,631	36%
Roofers	27	366	232	7%
Drywallers	85	435	520	16%
Sheet Metal	13	170	183	7%
Painters	434	545	979	44%
Elevator	344	364	708	49%
Teamsters	0	561	561	-
Misc.	0	415	415	-
<b>Total</b>	<b>22,812</b>	<b>68,908</b>	<b>91,720</b>	<b>25%</b>



## Terminal East Apron Expansion (Enabling Project)

- Designed to accommodate the Terminal Expansion (Concourse B)
- Bids open 4/12/2022
- Council award 7/21/2022
- Construction August 2022 – April 2023
- \$12.2M Total Estimate (Environmental, Design, Construct)
- FAA Airport Improvement Program (AIP) funded (90%)





# FRESNO YOSEMITE INTERNATIONAL AIRPORT





## Terminal Expansion

- Includes Expanded Facilities:
  - Passenger Security Checkpoint
  - New Concourse B
  - Replacement Customs International Arrivals Facility
  - TSA and airline baggage processing systems and support spaces
- Sustainable – Solar, energy efficient mechanical and lighting systems
- Intuitive wayfinding based on international standards
- Construction August 2022 – December 2024
- Total Cost \$120M (Additional funding needed for Art component)
- Design-Build Method of Delivery
  - Design 99% Completed





## Terminal Approach







## Customs & International Arrivals Facility





## Airside View of Terminal Expansion





## Expanded TSA Check Point





## Circulation Corridor to New Holdrooms





## Concourse B Holdrooms





## Checked Baggage Inspection System





## Terminal Expansion - Financing

Estimated Total Project Cost		\$120,000,000
Source of Funds	Amount	
Passenger Facility Charge Fees	\$6,000,000	
Measure C Funds	\$6,000,000	
CARES Act Funds	\$5,000,000	
TSA OTA Grant	\$24,000,000	
BIL-ATP Funds	<b>TBD</b>	
Omnibus Funding (awarded)	\$2,000,000	
Airport Revenue Bonds*	<b>\$77,000,000</b>	

***\* Total bond funds required is dependent upon actual BIL-ATP funds awarded.***



## Terminal Expansion – Milestones

- Environmental Review (NEPA & CEQA) 4/16/19 – 12/30/21
- Design-Builder Selection Process 9/16/19 – 2/1/20
- Design/Precon Contract Award 3/19/20 – 4/1/20
- Design/Preconstruction Services 4/1/20 – 2/1/22
- *BIL-ATP Grant Award* December 2022
- *Construction Contract Award (Phase 1 - \$18M)* August 2022
- *Construction NTP (Phase 1)* September 2022
- *Secure Bond Financing* December 2022
- *Construction Contract Award (Phase 2 - \$82M)* January 2023
- *Construction NTP (Phase 2)* January 2023
- *Beneficial Occupancy* December 2024







## Runway 11L-29R Reconstruction

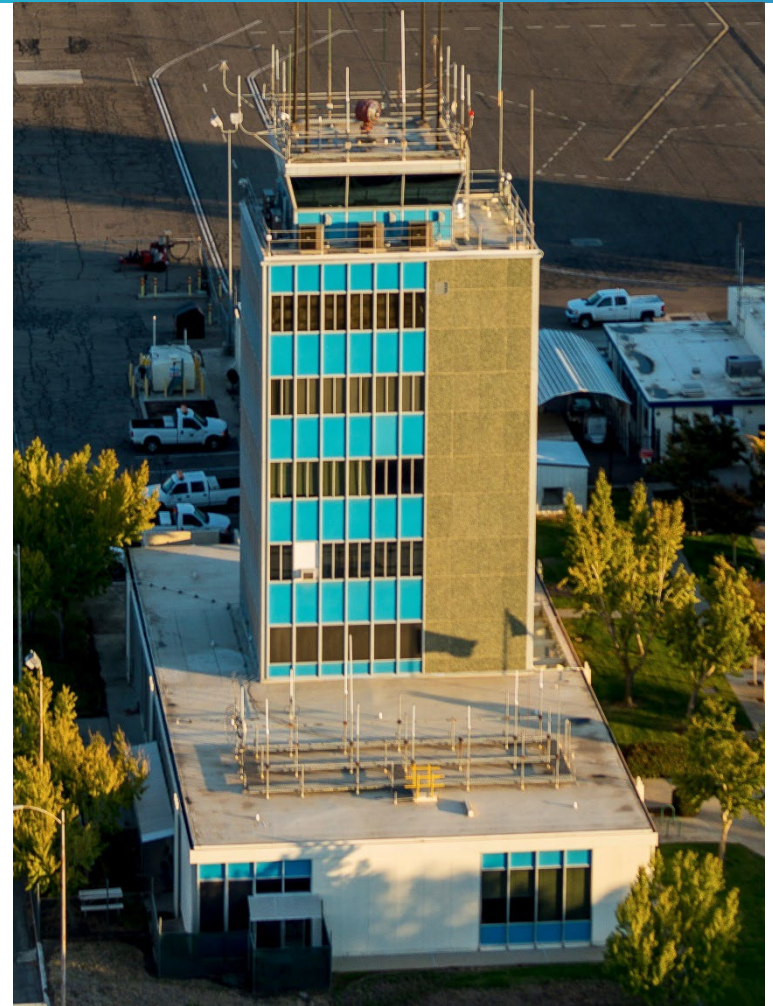
- Design in 2023
- Construction 2025 - 2027
- Approximately \$45M
  - BIL and AIP funding





## ATCT Replacement

- Siting Study 2022
- Design 2023
- Construction 2024
- Approximately \$30M
  - BIL-ATP Funding





## Beyond FATforward

- Must continue looking forward.
- Financing Plan preserves debt capacity – allows for needs beyond FATForward
- **Phase 2 Parking Garage** – Phase One allows for efficient expansion
- **Additional Gates** – Terminal design allows for efficient expansion
- **Baggage Claim** Expansion
- **Ticketing Lobby** Capacity
  - Phase 1: Improve throughput and reduce wait times through use of self-bag drop technology and common use self service check in kiosks
  - Phase 2: Physical lobby expansion – current design allows for efficient expansion





**FRESNO YOSEMITE**  
INTERNATIONAL AIRPORT

# Thank you!

**Henry Thompson, AAE**  
**City of Fresno, Director of Aviation**  
[Henry.Thompson@fresno.gov](mailto:Henry.Thompson@fresno.gov)  
**(559) 621-4600**

**FlyFresno.com**