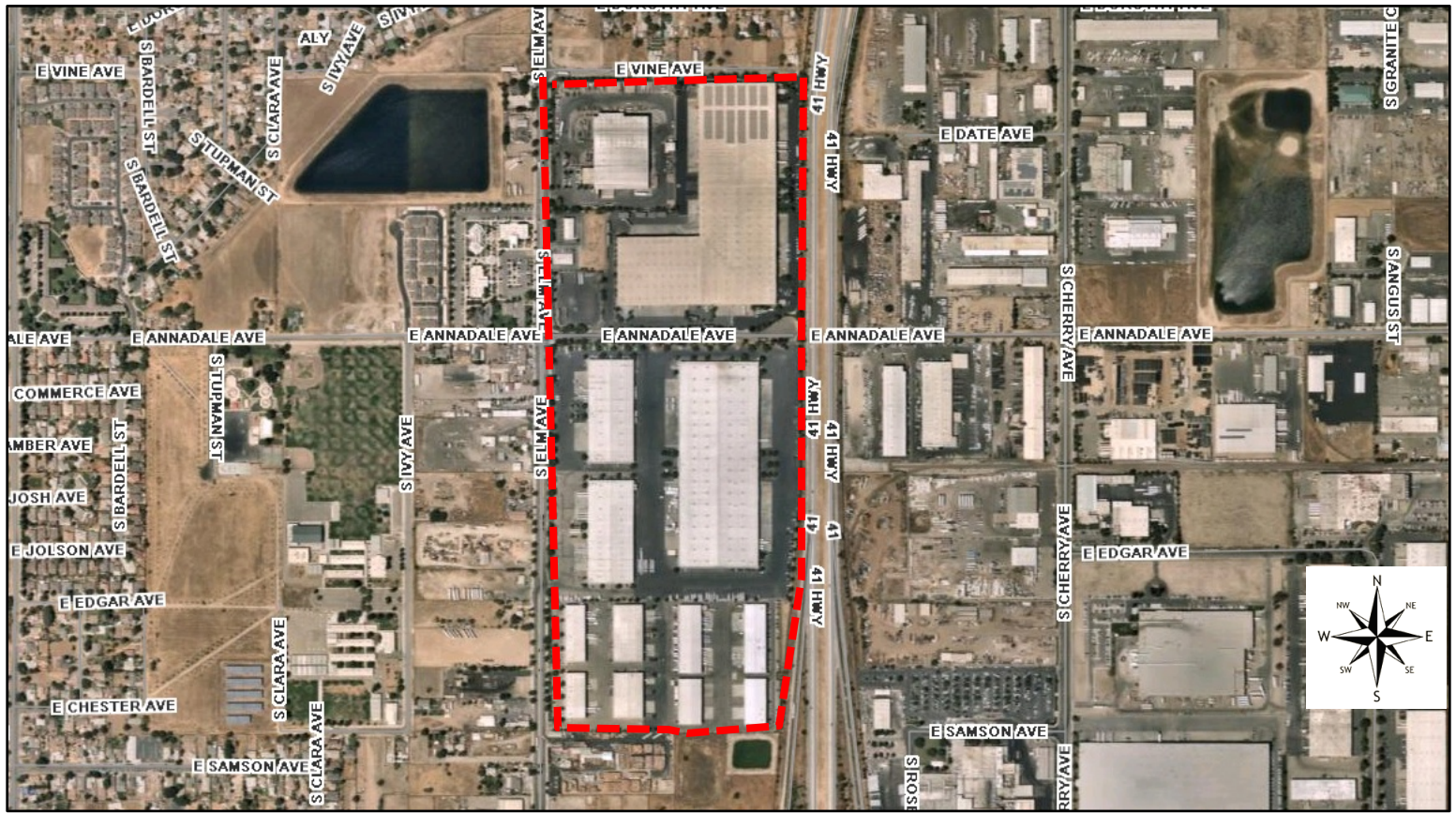


Exhibit A

AERIAL MAP



PLANNING AND DEVELOPMENT DEPARTMENT

Applications

Plan Amendment-Rezone Application
No. P20-01665

APN:

Multiple APNs
Bounded by E Vine Ave (north), S Elm
Ave (west), E Chester Ave (south),
Hwy 41 (east)

Zone District

Current: NMX (Neighborhood Mixed
Use)
Proposed: IL (Light Industrial)

Land Use Designation

Current: Neighborhood Mixed Use
Proposed: Light Industrial



LEGEND

Subject Properties
±92.53 acres