

CONSIDERATION OF  
PLAN AMENDMENT-REZONE APPLICATION NO.  
P19-05889;  
DEVELOPMENT PERMIT APPLICATION NO. P20-  
01559;  
AND  
THE RELATED ENVIRONMENTAL FINDING FOR  
ENVIRONMENTAL ASSESSMENT NO. P19-  
05889/P20-01559

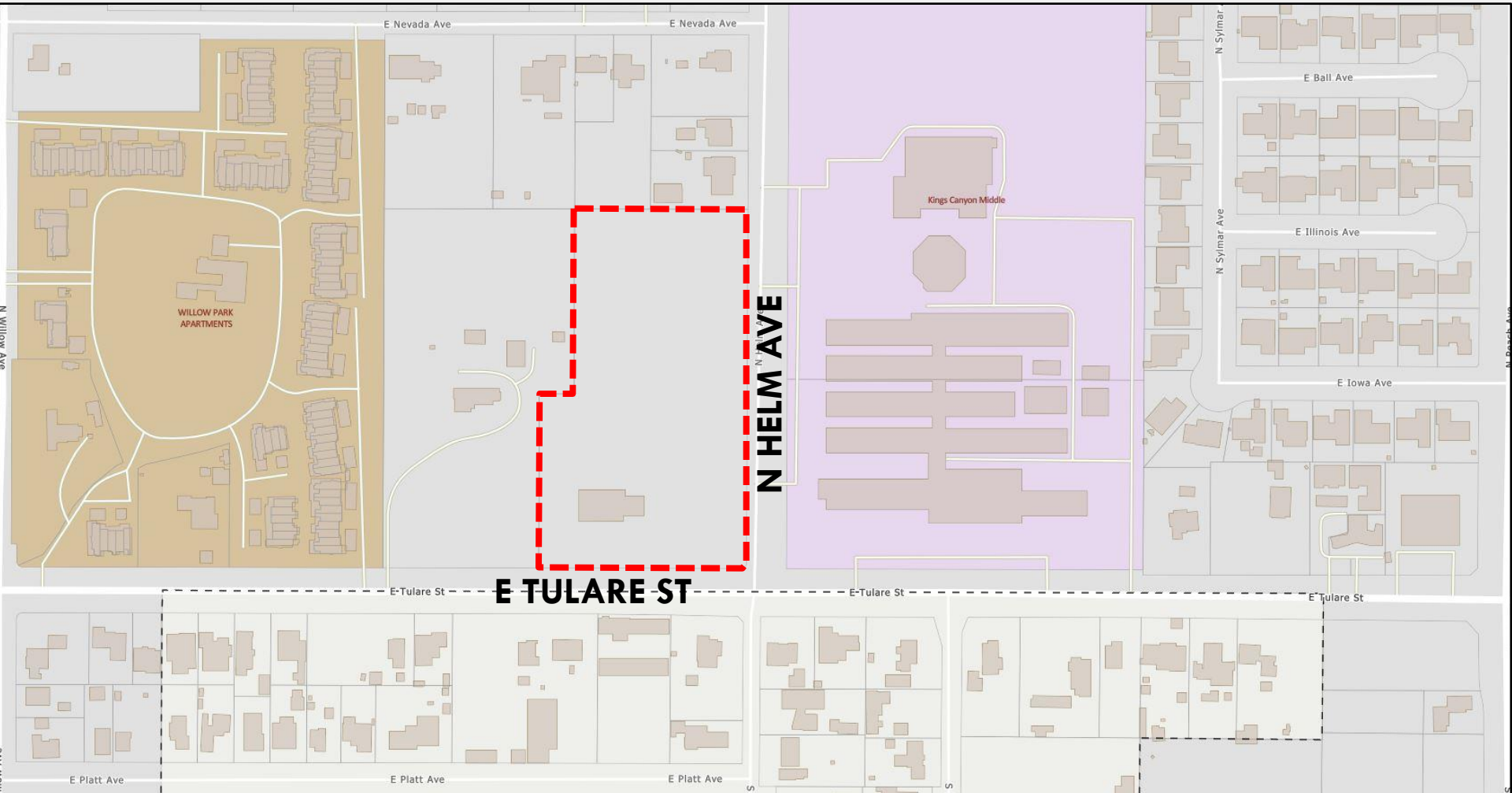


PRESENTATION BY: ROB HOLT, SUPERVISING PLANNER

ID 24-236

CITY COUNCIL HEARING | MARCH 7, 2024

# VICINITY MAP

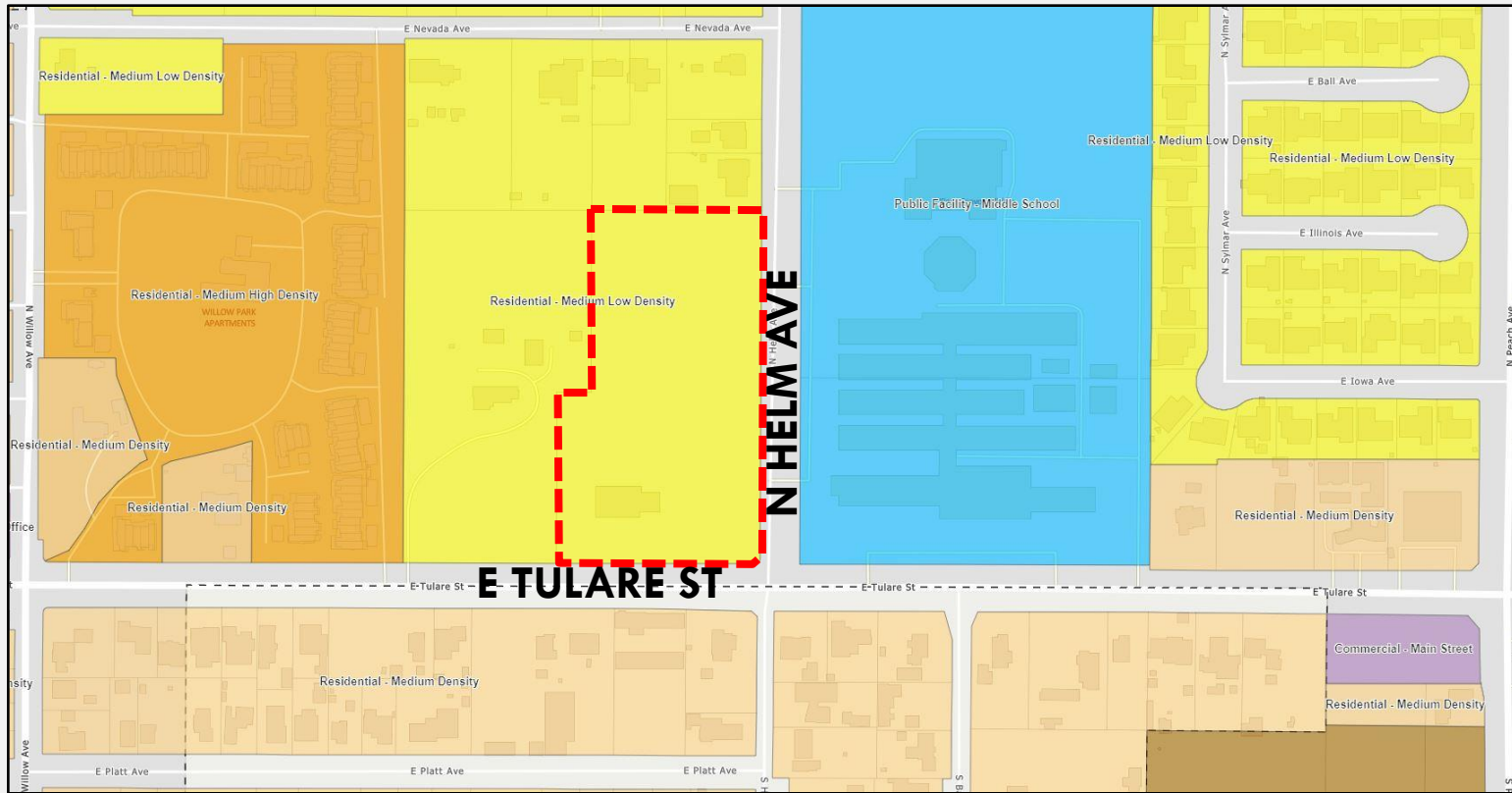


# EXISTING GENERAL PLAN MAP

**FROM:**  
MEDIUM LOW  
DENSITY  
RESIDENTIAL

**To:**  
URBAN  
NEIGHBORHOOD  
RESIDENTIAL

**REZONE:**  
RS-4 TO RM-2



# DEVELOPMENT

±4.83 ACRES

112 UNITS FOR SENIORS (GATED)

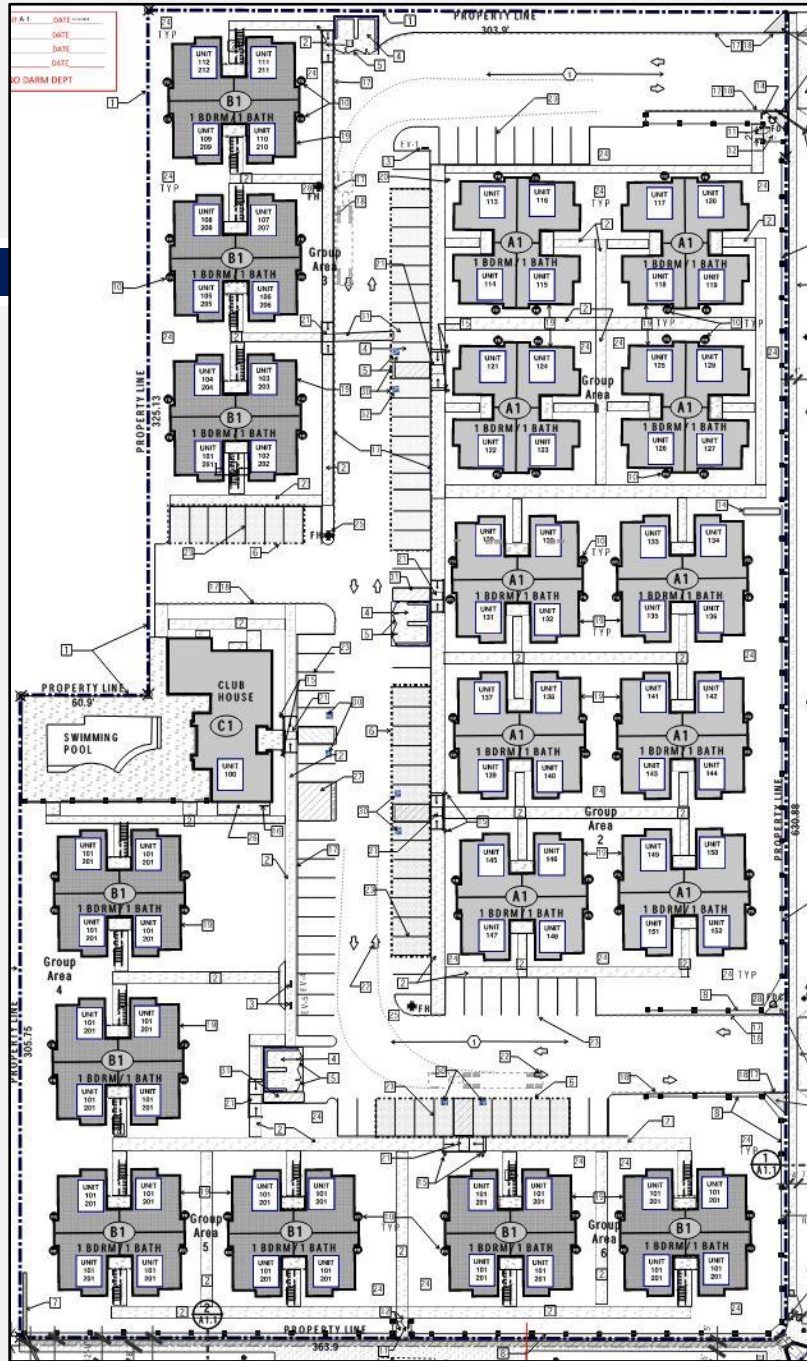
23.19 DU/AC

CLUBHOUSE W/  
COMMUNITY HALL  
& POOL

INGRESS/EGRESS  
ON HELM AVE

NEIGHBORHOOD  
MEETING  
(01/15/20)

ALUC FINDING



# AERIAL MAP

