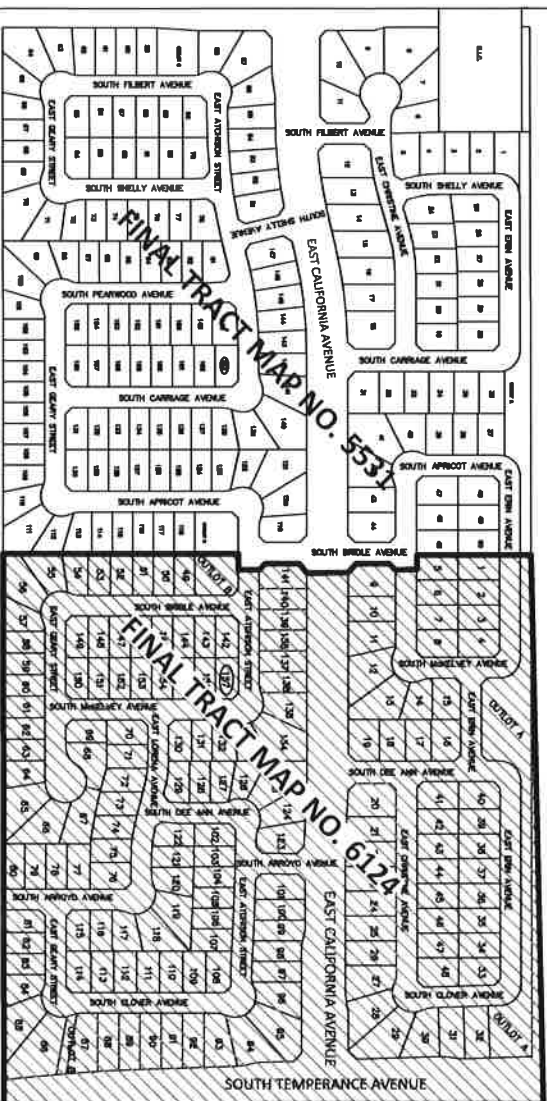
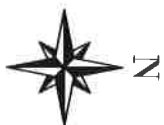


SOUTH ARMSTRONG AVENUE



TERRITORY TO BE ANNEXED  
TO THE CITY CFD NO. 11

BOUNDARY LINE OF NEW  
TERRITORY



NOT TO SCALE

# EXHIBIT B

DOC. \_\_\_\_\_  
FILED IN THE OFFICE OF THE CITY CLERK OF THE CITY OF FRESNO THIS \_\_\_\_\_ DAY  
OF \_\_\_\_\_, 2016.

ATTEST:

YVONNE SPENCE, CMC  
CITY CLERK OF THE CITY OF FRESNO

BY: \_\_\_\_\_  
DEPUTY



I HEREBY CERTIFY THAT THE ANNEXATION MAP NO. 72 OF THE COMMUNITY  
FACILITIES DISTRICT NO. 11, CITY OF FRESNO, COUNTY OF FRESNO, STATE OF  
CALIFORNIA WAS ADOPTED BY THE COUNCIL OF THE CITY OF FRESNO BY  
RESOLUTION NO. 2016-\_\_\_ ON \_\_\_\_\_, 2016.

ATTEST:

YVONNE SPENCE, CMC  
CITY CLERK OF THE CITY OF FRESNO

BY: \_\_\_\_\_  
DEPUTY



THIS ANNEXATION MAP NO. 72 OF THE CITY OF FRESNO COMMUNITY  
FACILITIES DISTRICT NO. 11, WAS FILED THIS \_\_\_\_\_ DAY OF \_\_\_\_\_, 2016  
AT THE HOUR OF \_\_\_\_\_ O'CLOCK \_\_\_\_\_ M AT BOOK 44, PAGE \_\_\_\_\_ OF MAPS OF  
ASSESSMENT AND COMMUNITY FACILITIES DISTRICTS IN THE OFFICE OF THE  
COUNTY RECORDER IN THE COUNTY OF FRESNO, STATE OF CALIFORNIA

PAUL DICTOS, C.P.A.  
COUNTY RECORDER OF THE COUNTY OF FRESNO

BY: \_\_\_\_\_

REFERENCE: BOUNDARY MAP OF CITY OF FRESNO COMMUNITY FACILITIES DISTRICT  
NO. 11, RECORDED NOVEMBER 8, 2005 AT BOOK 44, PAGE 61 OF ASSESSMENT AND  
COMMUNITY FACILITIES DISTRICTS IN THE OFFICE OF THE RECORDER IN THE COUNTY  
OF FRESNO, STATE OF CALIFORNIA  
NOTE: FOR PARCEL DIMENSIONS, SEE ASSESSOR'S MAP BOOK PAGES

## CITY OF FRESNO - Public Works Department

ANNEXATION MAP NO. 72 OF COMMUNITY FACILITIES DISTRICT NO. 11 OF THE CITY OF FRESNO, FRESNO COUNTY, CALIFORNIA		COUNTY CLERK: _____ OFFICE STAMP: _____	REPORT NO. _____
CITY CLERK: _____	DATE: _____	CITY CLERK: _____	DATE: _____