

Regular Council Meeting

August 28, 2025

FRESNO CITY COUNCIL



Supplement Packet

ITEM(S)

RECEIVED
2025 AUG 26 P 2:26
CITY OF FRESNO
CITY CLERK'S OFFICE

2-AA (ID 25-1110)

RESOLUTION - Approving the Final Map of Tract No. 6246, and accepting dedicated public uses offered therein except for dedications offered subject to City acceptance of developer installed required improvements - located on the north side of Alicante Drive west of Willow Avenue (Council District 6)

Contents of Supplement: Revised Final Map of Tract No. 6246

Item(s)

Supplemental Information:

Any agenda related public documents received and distributed to a majority of the City Council after the Agenda Packet is printed are included in Supplemental Packets. Supplemental Packets are produced as needed. The Supplemental Packet is available for public inspection in the City Clerk's Office, 2600 Fresno Street, during normal business hours (main location pursuant to the Brown Act, G.C. 54957.5(2)). In addition, Supplemental Packets are available for public review at the City Council meeting in the City Council Chambers, 2600 Fresno Street. Supplemental Packets are also available on-line on the City Clerk's website.

Americans with Disabilities Act (ADA):

The meeting room is accessible to the physically disabled, and the services of a translator can be made available. Requests for additional accommodations for the disabled, sign language interpreters, assistive listening devices, or translators should be made one week prior to the meeting. Please call City Clerk's Office at 621-7650. Please keep the doorways, aisles and wheelchair seating areas open and accessible. If you need assistance with seating because of a disability, please see Security.

PHASE I OF VESTING TENTATIVE MAP NO. 6246

CONSISTING OF FOUR SHEETS
SHEET THREE OF FOUR SHEET



PHASE I OF VESTING TENTATIVE MAP NO. 6246

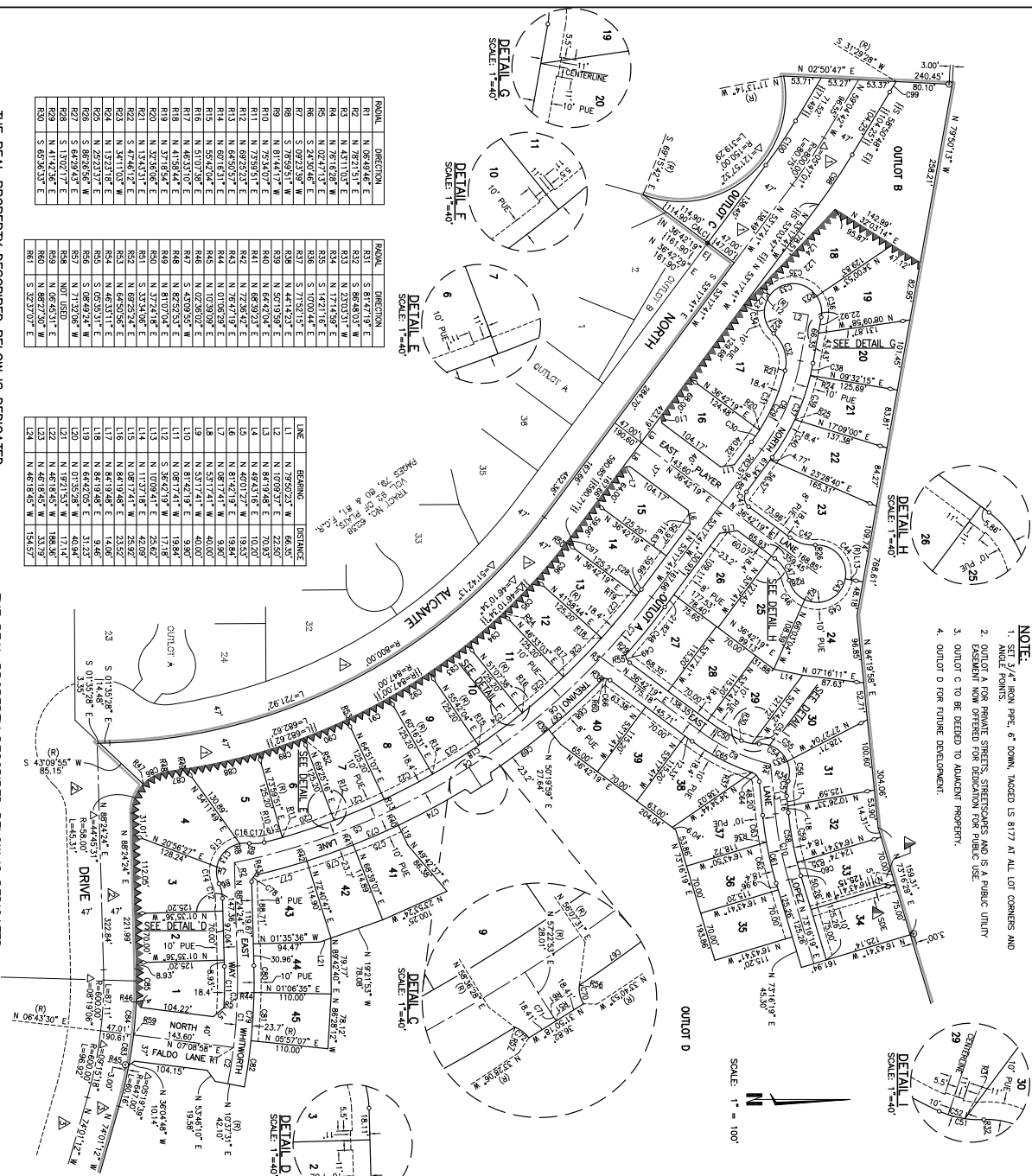
BEING A SUBDIVISION OF A PORTION OF THE NORTHWEST & NORTHEAST QUARTER OF SECTION 12, TOWNSHIP 12 SOUTH, RANGE 20 EAST, MOUNT DIABLO BASE AND MERIDIAN

SURVEYED AND PLATTED IN JANUARY 2024, BY BRET A. GIANNETTA

SHEET FOUR OF FOUR SHEETS

LEGEND

- NOTE:**
1. SET 3/4" IRON PIPE, 6" DOWN, TAGGED LS 8177 AT ALL LOT CORNERS AND ANGLE POINTS.
 2. OUTLOT A FOR PRIVATE STREETS, STREETSAPES AND IS A PUBLIC UTILITY EASEMENT NOW OFFERED FOR DEDICATION FOR PUBLIC USE.
 3. OUTLOT C TO BE DEEDED TO ADJACENT PROPERTY.
 4. OUTLOT D FOR FUTURE DEVELOPMENT.



THE REAL PROPERTY DESCRIBED BELOW IS DEDICATED
IN FEE FOR PUBLIC PURPOSES:

OUTLOT B IS DEDICATED IN FEE TO THE CITY OF FRESNO FOR COMMON AREA AND OPEN SPACE PURPOSES SUBJECT TO CITY ACCEPTANCE OF DEVELOPER INSTALLED REQUIRED IMPROVEMENTS.

THE REAL PROPERTY DESCRIBED BELOW IS DEDICATED
AS AN EASEMENT FOR PUBLIC PURPOSES:

PUE PUBLIC UTILITY EASEMENT NOW OFFERED FOR DEDICATION FOR PUBLIC USE

	Direction	Final
R1	N 06°46'46" E	81
R2	N 78°21'51" E	82
R3	N 45°11'03" E	83
R4	N 76°16'38" W	84
R5	N 02°41'17" E	85
R6	S 24°30'46" E	86
R7	S 09°23'59" W	87
R8	S 78°59'51" E	88
R9	N 81°44'17" W	89
R10	N 75°34'07" E	90
R11	N 75°59'51" E	91
R12	N 69°23'23" E	92
R13	N 64°59'57" E	93
R14	N 69°16'51" E	94
R15	N 55°24'04" E	95
R16	N 51°07'58" E	96
R17	N 46°53'10" E	97
R18	N 51°58'46" E	98
R19	N 32°00'46" E	99
R20	N 32°00'46" E	100
R21	N 134°53'17" E	101
R22	S 47°46'13" E	102
R23	N 34°11'03" W	103
R24	N 132°51'38" E	104
R25	N 25°52'31" E	105
R26	S 86°26'56" W	106
R27	S 64°49'13" E	107
R28	S 130°07'17" E	108
R29	N 42°07'36" E	109
R30	S 65°36'13" E	110

	RAJAL	DIRECTION
R31	S 17°19' E	
R32	S 66°43' W	
R33	N 22°03'1" W	
R34	N 17°45' E	
R35	S 1°21'16" E	
R36	E 10°00'44" E	
R37	S 77°52'15" E	
R38	N 44°42'3" E	
R39	N 50°19'59" E	
R40	N 66°42'04" E	
R41	N 66°39'23" E	
R42	N 72°36'4" E	
R43	N 76°47'19" E	
R44	N 10°30'29" E	
R45	N 13°09'09" E	
R46	N 02°36'0" E	
R47	S 43°09'55" W	
R48	N 82°52'53" E	
R49	N 81°07'04" E	
R50	N 33°24'18" E	
R51	S 33°34'06" E	
R52	N 69°25'24" E	
R53	N 64°50'56" E	
R54	N 46°33'11" E	
R55	S 05°35'31" E	
R56	N 01°32'09" W	
R57	N 71°12'06" W	
R58	NOT USED	
R59	N 08°45'31" E	
R60	N 86°27'00" E	
R61	S 23°30'7" E	

LINE	BEARING	DISTANCE
1	N 79°32' W	66.55
2	N 10°09'37" E	22.60
3	N 41°19'46" E	77.03
4	N 49°31'36" E	10.20
5	N 40°01'27" W	19.53
6	N 18°12'19" E	19.64
7	N 08°17'41" W	9.90
8	S 35°17'41" W	40.00
9	S 53°17'41" W	40.00
10	N 18°12'19" E	9.90
11	N 08°17'41" W	19.64
12	S 35°42'19" E	27.62
13	N 10°09'37" E	15.18
14	N 13°17'48" E	52.92
15	N 08°12'19" W	25.02
16	N 41°19'46" E	77.03
17	N 49°31'36" E	10.20
18	N 41°19'46" E	9.66
19	N 44°02'05" E	31.33
20	N 10°55'28" W	40.94
21	N 19°13'15" W	17.14
22	N 61°18'45" W	188.96
23	N 61°18'45" W	33.39
24	N 47°18'45" W	154.57

Clime	Delta	Radius	Length
C1	121.70°	79.00°	168.60°
C2	63.54°	79.00°	67.25°
C3	63.54°	79.00°	72.25°
C4	41.53°	90.00°	60.25°
C5	20.58°	90.00°	67.50°
C6	141.70°	90.00°	74.25°
C7	98.94°	90.00°	112.02°
C8	22.84°	90.00°	112.02°
C9	22.84°	72.75°	112.02°
C10	110.32°	49.50°	90.53°
C11	61.24°	49.50°	90.53°
C12	22.82°	34.10°	21.64°
C13	22.82°	34.10°	21.64°
C14	33.54°	40.80°	24.22°
C15	69.56°	40.80°	43.69°
C16	91.75°	35.40°	43.69°
C17	24.14°	34.10°	21.43°
C18	24.14°	34.10°	21.43°
C19	63.54°	92.20°	77.61°
C20	63.54°	92.20°	77.61°
C21	41.43°	92.20°	77.61°
C22	41.43°	92.20°	77.61°
C23	63.54°	92.20°	77.61°
C24	63.54°	92.20°	77.61°
C25	41.43°	92.20°	77.61°
C26	41.43°	92.20°	77.61°
C27	63.54°	92.20°	77.61°
C28	63.54°	92.20°	77.61°
C29	41.43°	92.20°	77.61°
C30	41.43°	92.20°	77.61°
C31	63.54°	92.20°	77.61°
C32	63.54°	92.20°	77.61°
C33	21.73°	40.80°	36.00°
C34	21.73°	40.80°	36.00°
C35	10.90°	40.80°	71.69°
C36	42.93°	40.80°	71.69°
C37	78.74°	31.84°	14.21°
C38	78.74°	31.84°	14.21°
C39	111.84°	31.84°	62.76°
C40	90.00°	15.10°	21.62°
C41	20.57°	34.10°	38.01°
C42	20.57°	34.10°	38.01°
C43	10.92°	40.80°	72.70°
C44	10.92°	40.80°	72.70°
C45	51.72°	40.80°	34.73°
C46	61.92°	34.10°	38.01°
C47	61.92°	34.10°	38.01°
C48	10.92°	40.80°	72.70°
C49	10.92°	40.80°	72.70°
C50	12.83°	26.10°	26.16°
C51	27.75°	34.10°	26.16°

LINE	DEPTH	RADIUS	LENGTH
532	181.64	34.10	15.28
533	115.46	34.10	15.28
534	115.46	34.10	15.28
535	115.46	34.10	15.28
536	115.46	34.10	15.28
537	467.83	34.10	28.74
538	225.51	34.10	21.67
539	115.46	34.10	15.28
540	115.46	34.10	15.28
541	115.46	34.10	15.28
542	115.46	34.10	15.28
543	115.46	34.10	15.28
544	115.46	34.10	15.28
545	115.46	34.10	15.28
546	115.46	34.10	15.28
547	115.46	34.10	15.28
548	115.46	34.10	15.28
549	115.46	34.10	15.28
550	115.46	34.10	15.28
551	115.46	34.10	15.28
552	115.46	34.10	15.28
553	115.46	34.10	15.28
554	115.46	34.10	15.28
555	115.46	34.10	15.28
556	115.46	34.10	15.28
557	115.46	34.10	15.28
558	115.46	34.10	15.28
559	115.46	34.10	15.28
560	115.46	34.10	15.28
561	115.46	34.10	15.28
562	115.46	34.10	15.28
563	115.46	34.10	15.28
564	115.46	34.10	15.28
565	115.46	34.10	15.28
566	115.46	34.10	15.28
567	115.46	34.10	15.28
568	115.46	34.10	15.28
569	115.46	34.10	15.28
570	115.46	34.10	15.28
571	115.46	34.10	15.28
572	115.46	34.10	15.28
573	115.46	34.10	15.28
574	115.46	34.10	15.28
575	115.46	34.10	15.28
576	115.46	34.10	15.28
577	115.46	34.10	15.28
578	115.46	34.10	15.28
579	115.46	34.10	15.28
580	115.46	34.10	15.28
581	115.46	34.10	15.28
582	115.46	34.10	15.28
583	115.46	34.10	15.28
584	115.46	34.10	15.28
585	115.46	34.10	15.28
586	115.46	34.10	15.28
587	115.46	34.10	15.28
588	115.46	34.10	15.28
589	115.46	34.10	15.28
590	115.46	34.10	15.28
591	115.46	34.10	15.28
592	115.46	34.10	15.28
593	115.46	34.10	15.28
594	115.46	34.10	15.28
595	115.46	34.10	15.28
596	115.46	34.10	15.28
597	115.46	34.10	15.28
598	115.46	34.10	15.28
599	115.46	34.10	15.28
600	115.46	34.10	15.28
601	115.46	34.10	15.28
602	115.46	34.10	15.28
603	115.46	34.10	15.28
604	115.46	34.10	15.28
605	115.46	34.10	15.28
606	115.46	34.10	15.28
607	115.46	34.10	15.28
608	115.46	34.10	15.28
609	115.46	34.10	15.28
610	115.46	34.10	15.28