

CITY OF



# PUBLIC WORKS DEPARTMENT

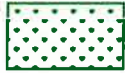
TRAFFIC AND ENGINEERING SERVICES DIVISION

FINAL TRACT MAP NO. 6033, PHASE I OF 3

\*SEE DETAILS FOR OUTLOT A - SHEET 2 OF 2



NOT TO SCALE  
October 13, 2014



**LANDSCAPE AND IRRIGATION:**  
TOTAL TREES AND SHRUBS = 30,053 SF  
\*FOWLER HAS TRAIL  
FOWLER MEDIAN = 2,496 SF



LARGE TREES = 65 EA  
SMALL TREES = 74 EA  
\*INCLUDES PARK TREES



**INTERIOR PAVEMENT:**  
TOTAL AREA = 139,000 SF



**CONCRETE IMPROVEMENTS:**  
CURB & GUTTER = 9,824 LF  
VALLEY GUTTER = 2,376 SF  
SIDEWALK & CURB RAMPS = 57,712 SF  
ENTRANCE MEDIAN CURB (2) = 468 LF



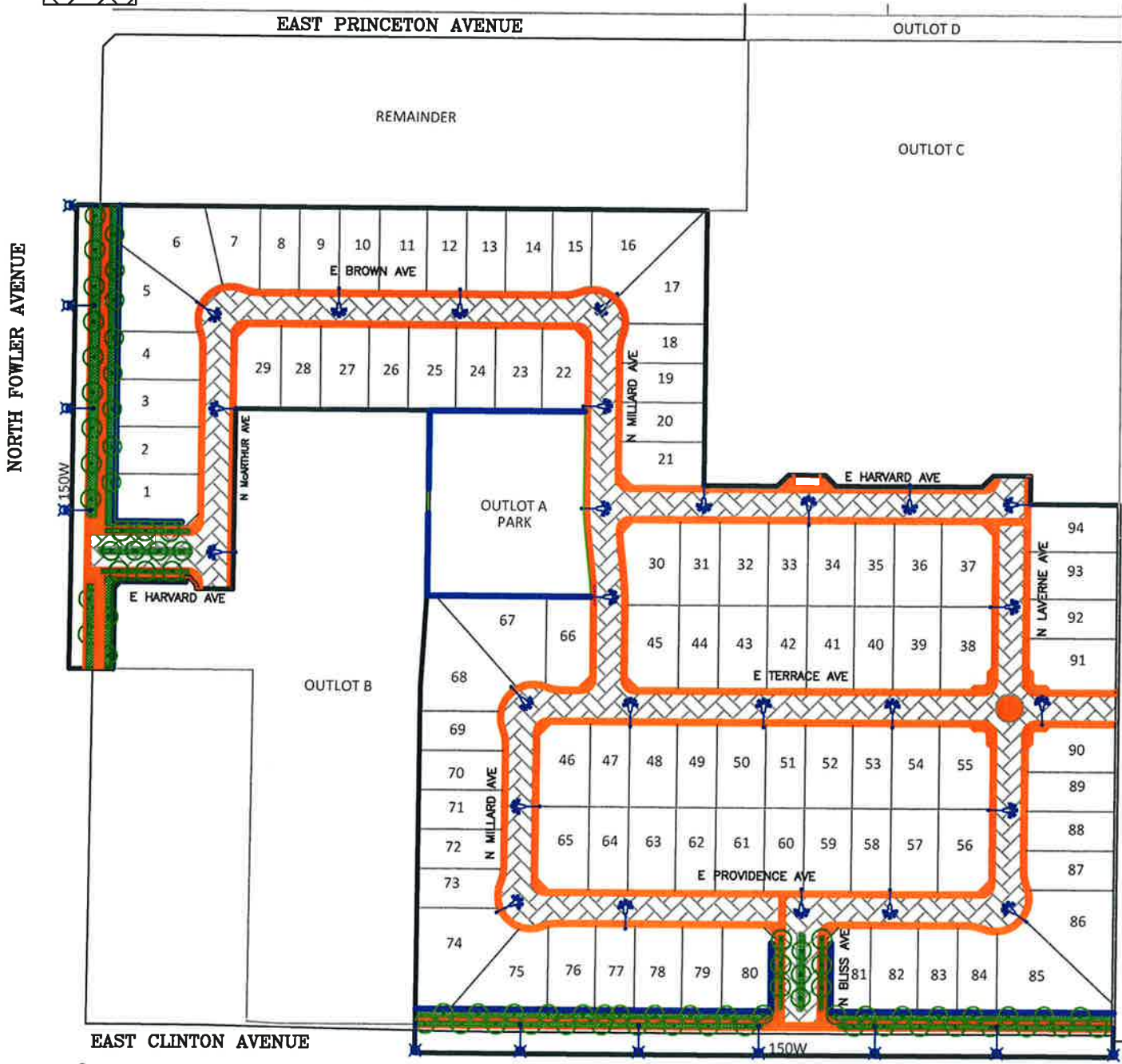
TRAFFIC CIRCLE = 1 EACH



DECORATIVE STREET LIGHTS = 26 (70W)



STANDARD STREET LIGHTS = 9 (70W), 2 (150W)





NOT TO SCALE  
October 13, 2014

 LANDSCAPE AND IRRIGATION:  
TOTAL TURF AND BEDS = 40,553 SF

BLOCK WALL = 610 LF  
DECORATIVE LIGHT = 1 EACH

 CONCRETE IMPROVEMENTS:  
SIDEWALKS & PADS = 5,365 SF

**PARK AMENITIES**

- Play Equipment
- Dual Swing Set
- Soft Fall Safety Surface
- 24'X24' Shade/Sail Structure
- 30'X30' Shade/Sail Structure
- Picnic Tables
- Park Benches
- Trash Receptacles
- Dog Station
- Outdoor Grills

**DETAILS FOR OUTLOT A - PARK**



TOT-LOT 700 SF  
SAFETY SURFACE 1,500 SF  
SHADE (FABRIC) 1,600 SF

PICNIC AREA (400 SF)