

# **Exhibit R-2 Councilmember Arias Presentation**

**CITY COUNCIL HEARING:** Conditional Use Permit Application No. P23-00835, Planned Development Permit Application No. P23-02080, and related Environmental Assessment



**Office of Councilmember  
Miguel A. Arias**

---

*Representing the Third  
District*

**Drive-Thrus  
Near Schools**

# West Fresno

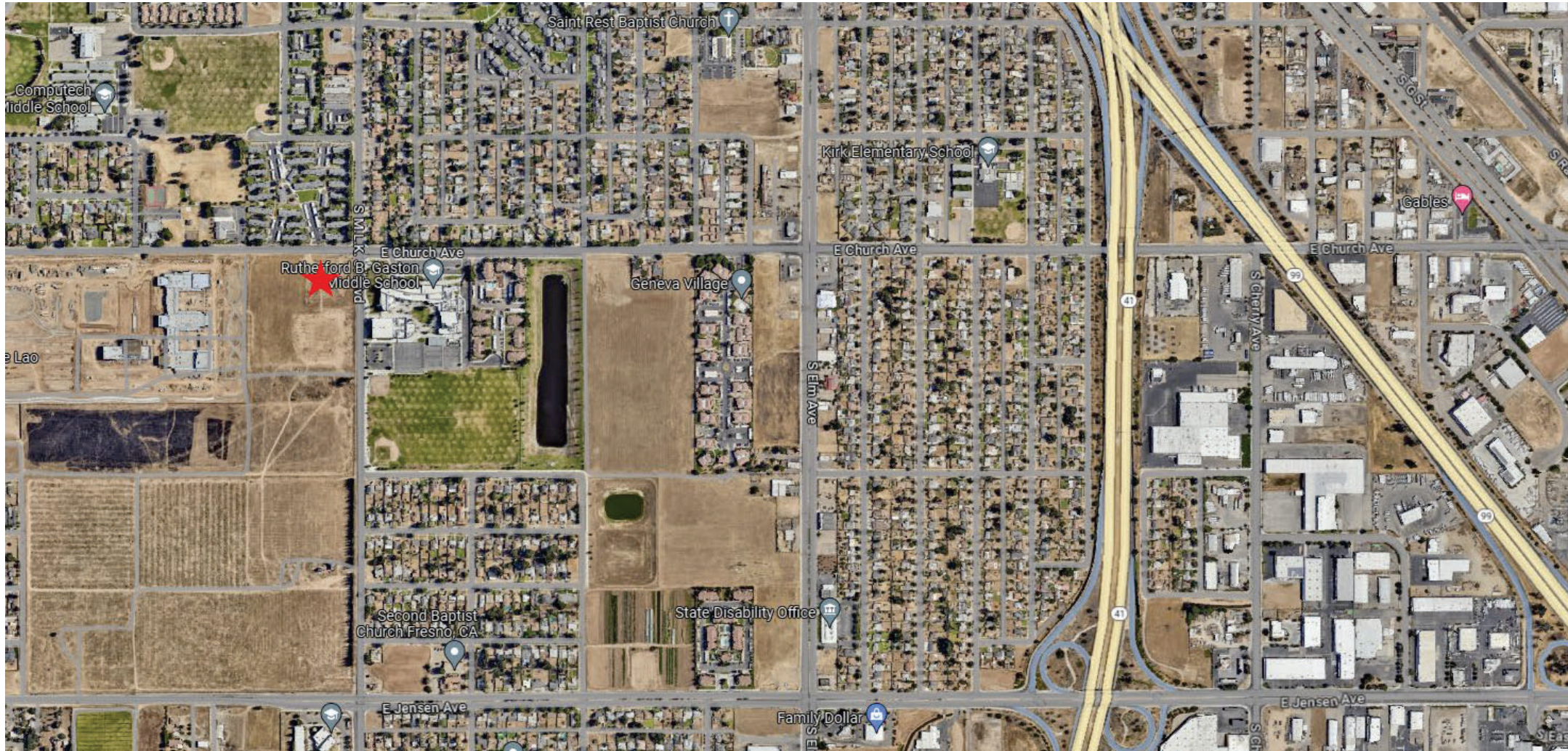
## ENVIRONMENTAL CONDITIONS

- Worst Pollution in Fresno and in CA
- 56-65 Brown Fields
- Industrial Pollution
- Highest Prenatal Deaths Of African-American Babies
- Shorter Life-Span by 20 Years

## NEW INVESTMENTS

- TCC - New West Fresno College Campus
- 10 Acre Park
- Medical Clinic
- Market-Rate Housing
- AB 617
- Truck Study In Progress

# Freeway Traffic Into Residential Neighborhoods



# Nearby School Sites



**King Elementary School**

**Gaston Middle School**

**Computech Middle School**

**Edison High School**

**FCC – West Fresno Campus**

**Hinton Center**

**Hinton Park**

# Existing Traffic Congestion



# Infrastructure

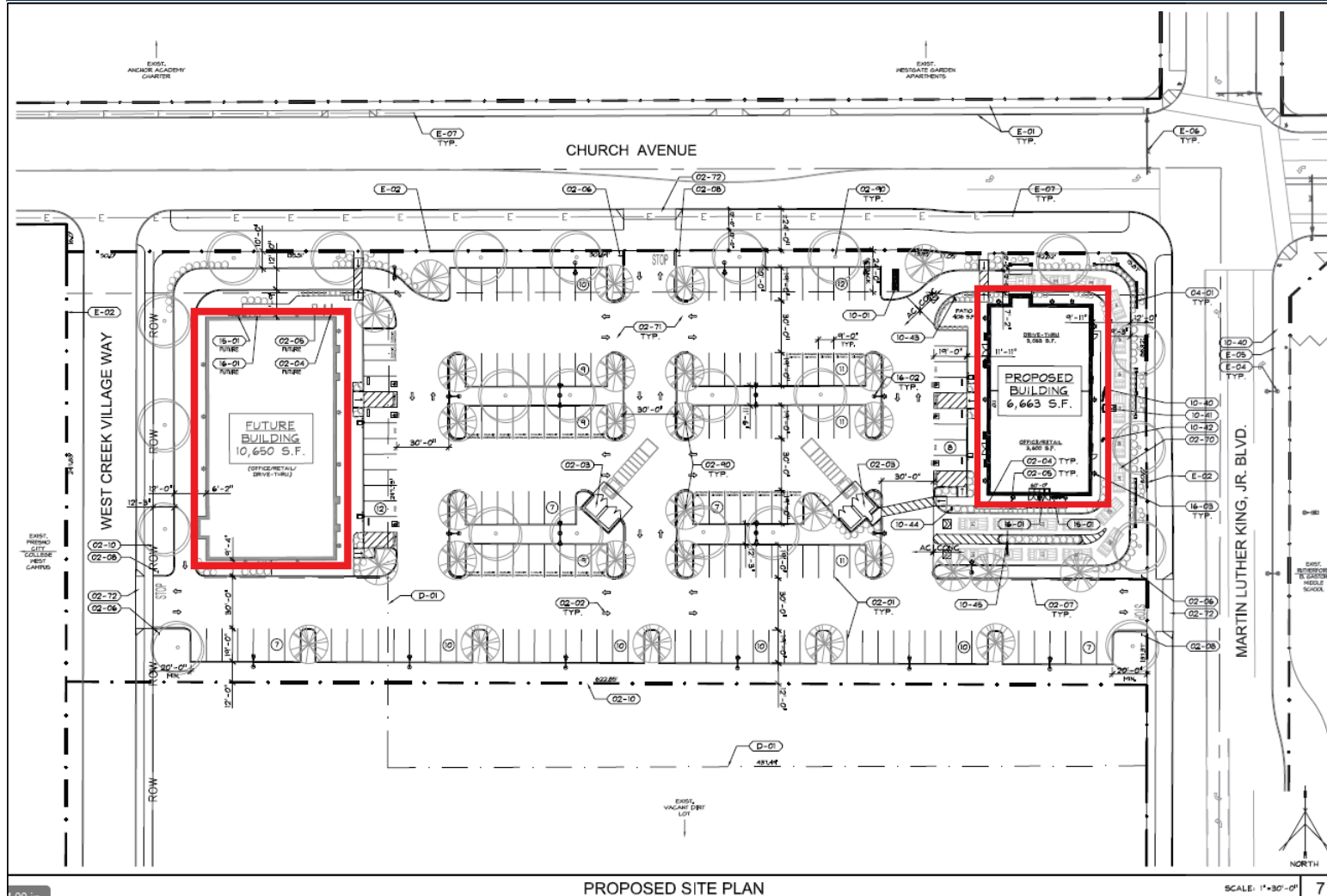


**MLK & Church Avenue  
infrastructure project:**

**PENDING**



# New Additional Impacts From Two Drive-Thru Businesses



Vehicle idling during a bad quality air day, contributes to a hyper-local hotspot of air pollution.

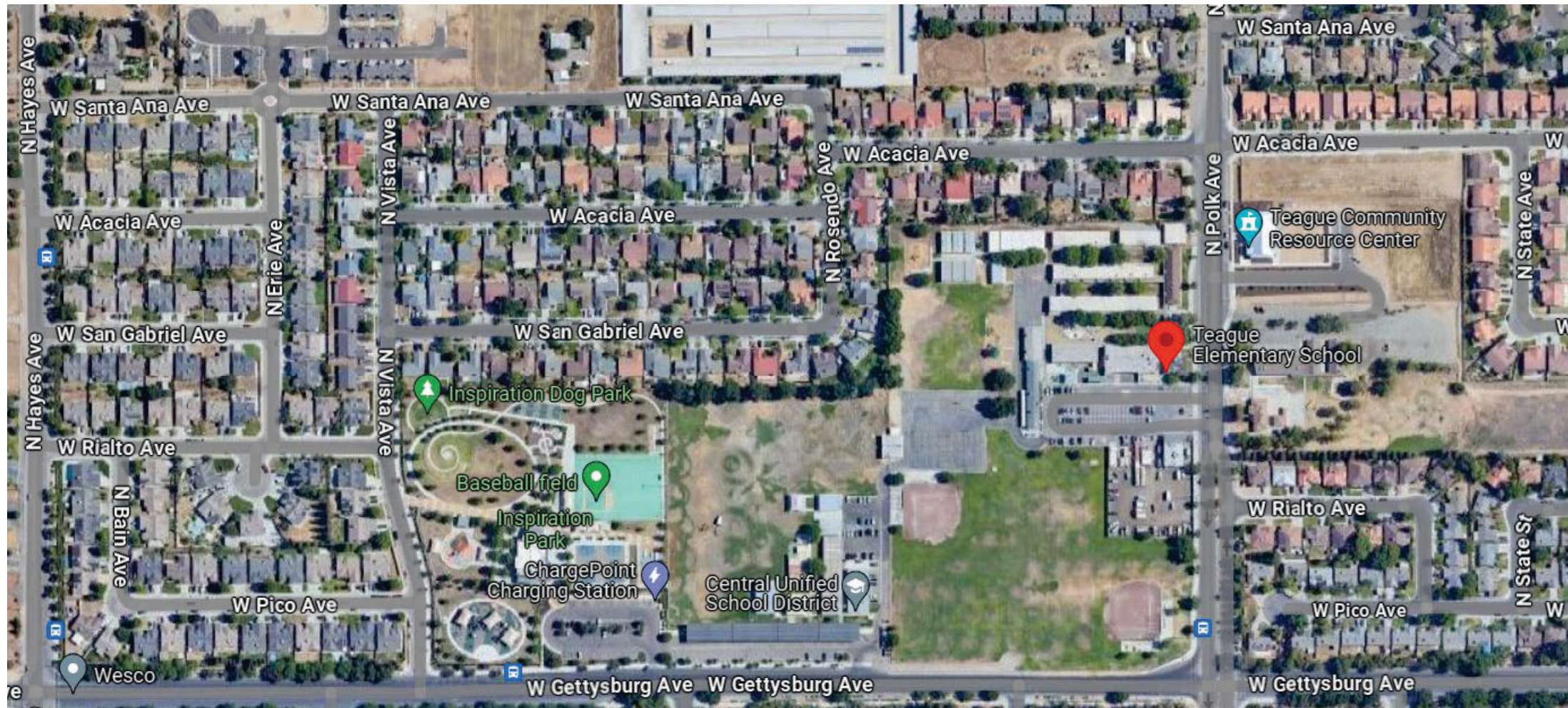
Observations from other similar sites when the drive thru line spills over; vehicles blocking the sidewalk, bike lanes, and street.



# Citywide School Sites

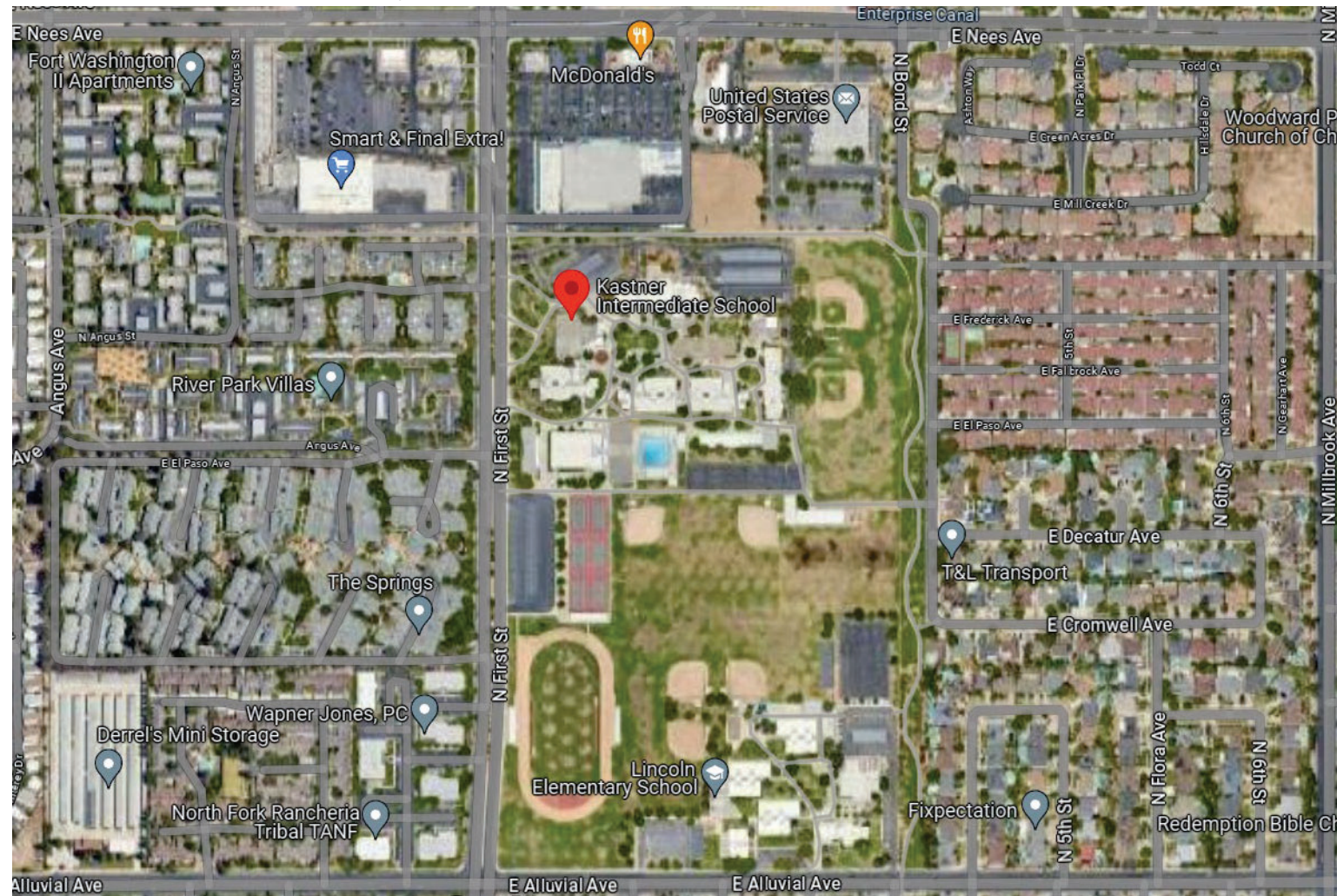
## TEAGUE ELEMENTARY

no commercial development directly N, E, S, W of school site



# Citywide School Sites

## Lincoln Elementary School & Kastner Intermediate School



# Citywide School Sites

## Pinedale Elementary School



# Community Feedback

## Jensen & MLK

### Zoning: Commercial Regional

