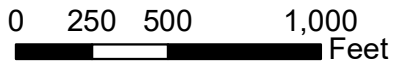
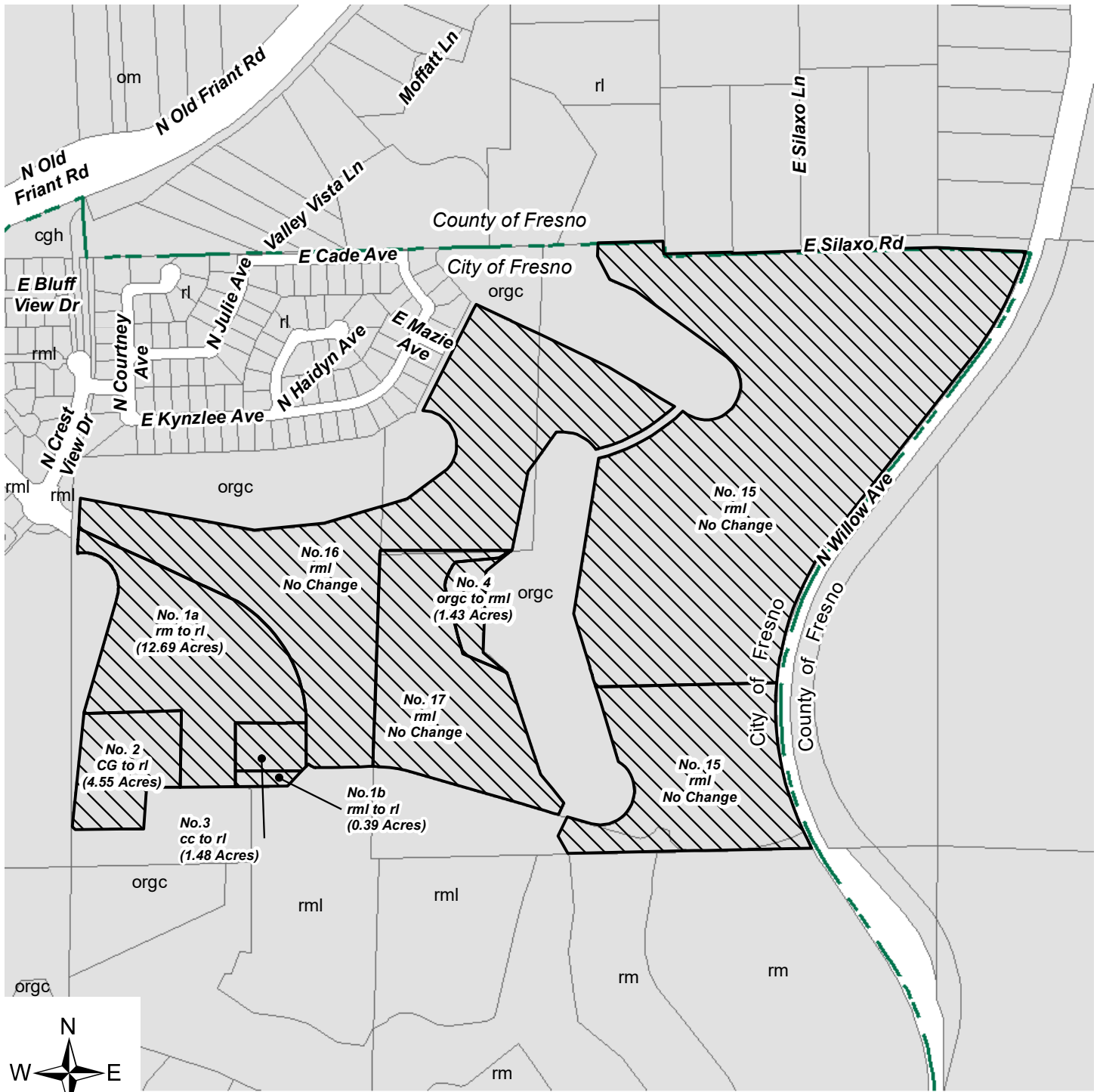


Exhibit D

Plan Amendment

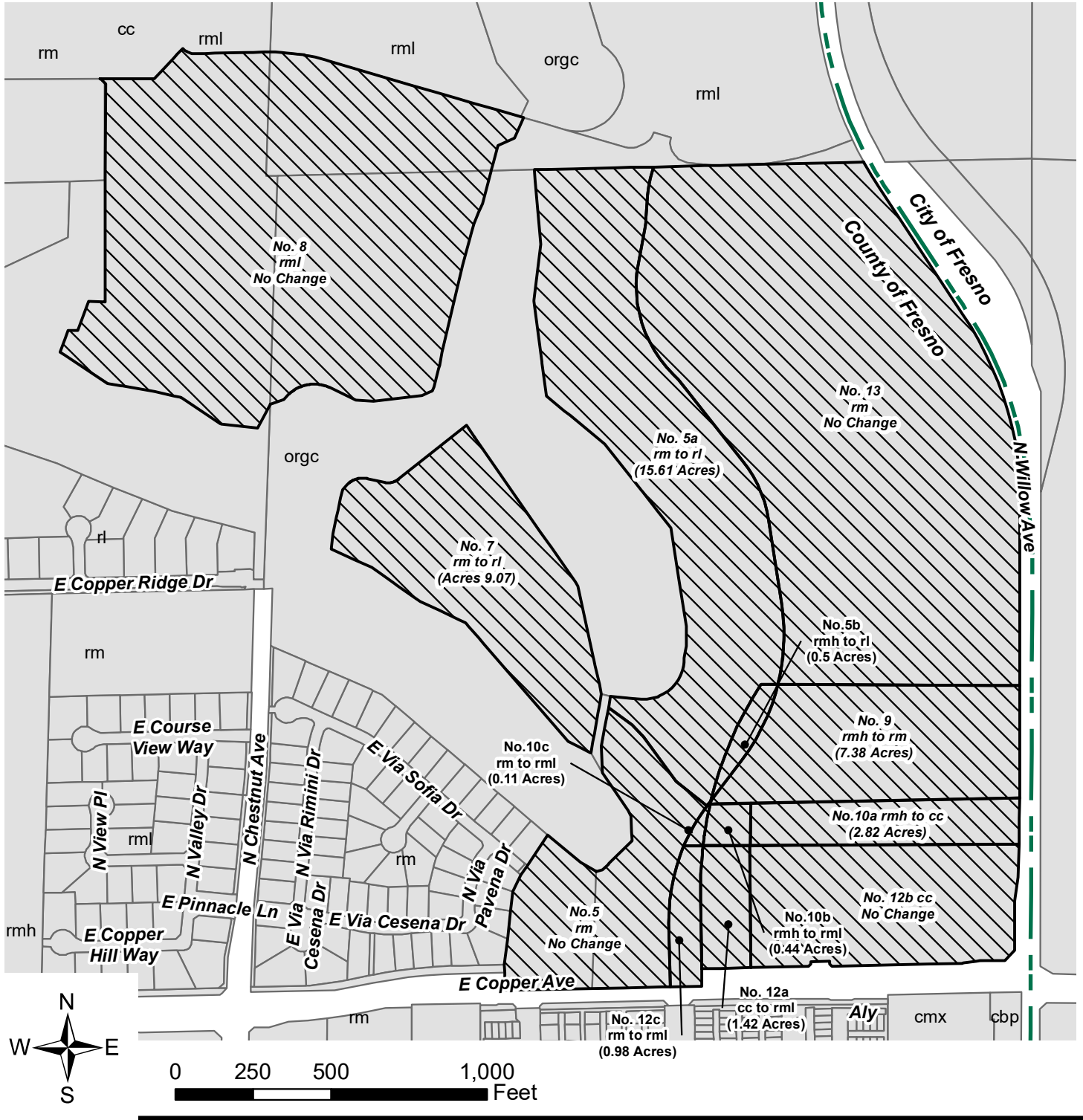


P21-01875 Copper River Southwest of E. Silaxon and N. Willow Avenues



- 1a) From the rm (Residential, Medium Density) land use to the rl (Residential, Low Density) land use.
- 1b) From the rml (Residential, Medium Low Density) land use to the rl (Residential, Low Density) land use.
- 2) From the cg (Commercial General) land use to rl (Residential, Low Density) land use.
- 3) From the cc (Community Commercial) land use to the rl (Residential, Low Density) land use.
- 4) From the orgc (Open Space, Golf Course) land use to the rml (Residential, Medium Low Density) land use.

Plan Amendment

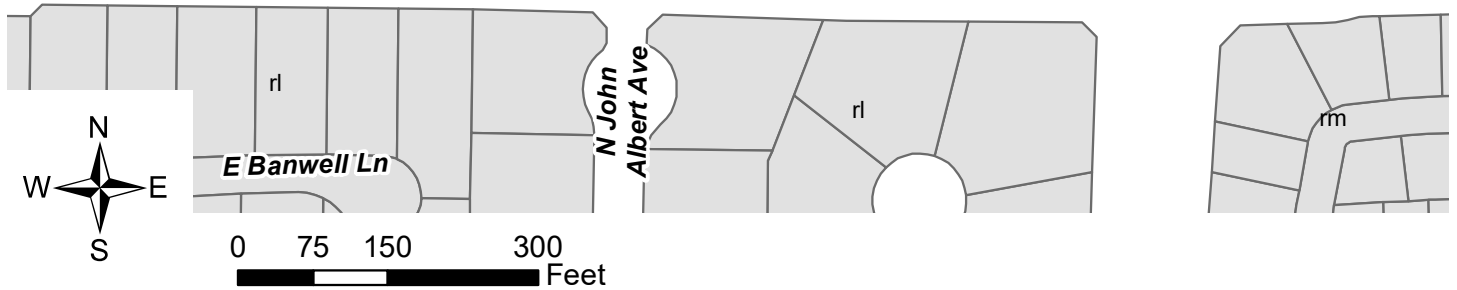
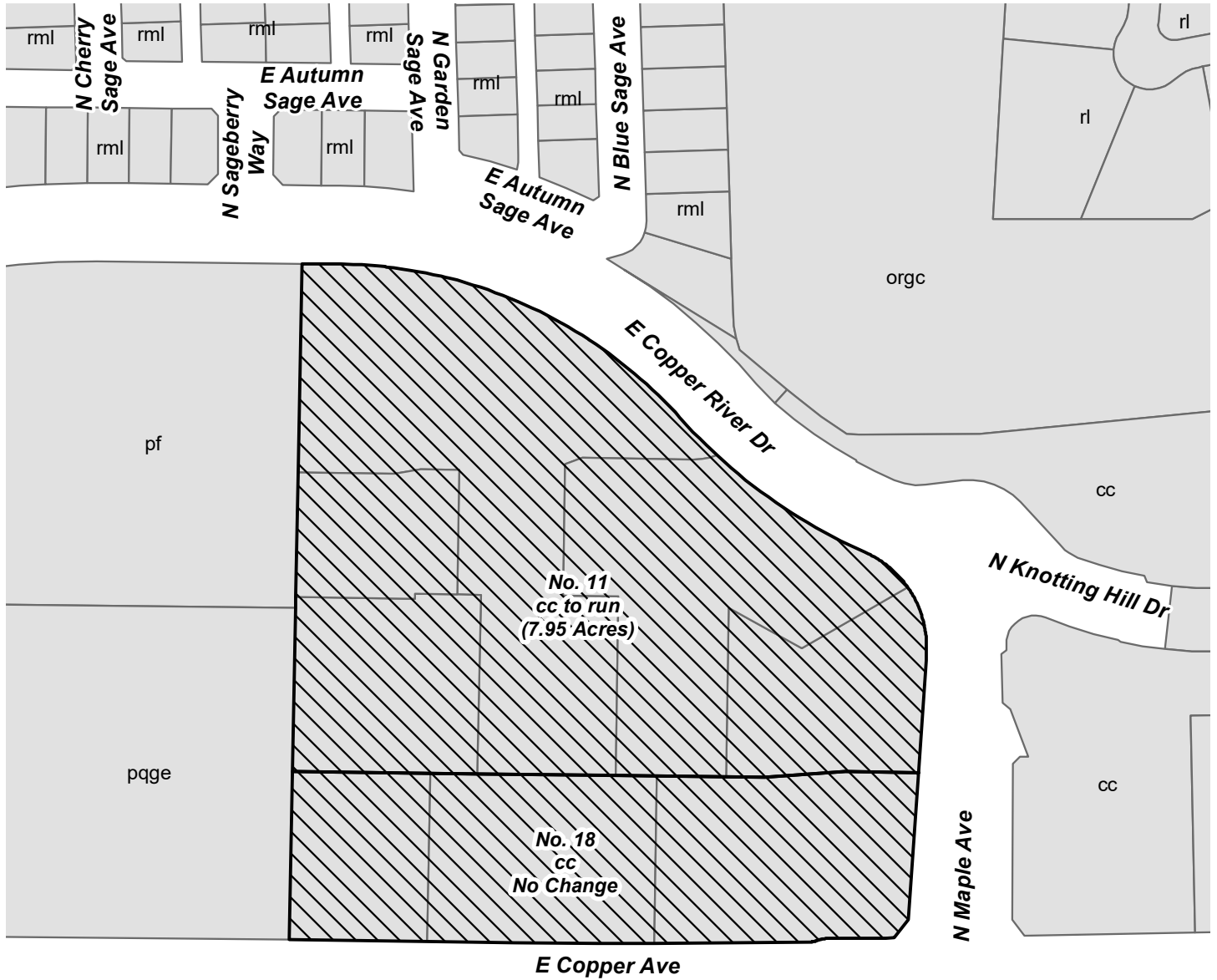


P21-01875 Copper River Northwest of E. Copper and N. Willow Avenues



- 5a) From the rm (*Residential, Medium Density*) land use to the rl (*Residential, Low Density*) land use.
- 5b) From the rmh (*Residential, Medium High Density*) land use to the rl (*Residential, Low Density*) land use.
- 7) From the rm (*Residential Medium Density*) land use to the rl (*Residential, Low Density*) land use.
- 9) From the rmh (*Residential, Medium High Density*) land use to the rm (*Residential, Medium Density*) land use.
- 10a) From the rmh (*Residential, Medium High Density*) land use to cc (*Community Commercial*) land use.
- 10b) From the rmh (*Residential, Medium High Density*) land use to the rml (*Residential, Medium Low Density*) land use.
- 10c) From the rm (*Residential, Medium Density*) land use to the rml (*Residential, Medium Low Density*) and use.
- 12a) From the cc (*Community Commercial*) land use to the rml (*Residential, Medium Low Density*) land use.
- 12c) From the rm (*Residential, Medium Density*) land use to the rml (*Residential, Medium Low Density*) land use.

Plan Amendment



P21-01875 Coper River Northwest of E. Copper and N. Maple Avenues



11) From the cc (*Community Commercial/Urban Growth*) land use to the run (*Residential, Urban Neighborhood*) land use.

Plan Amendment



P21-01875 Copper River

Properties along E. Copper River Drive between E. Friant and N. Alicante Drives



19) From the cc (Community Commercial) land use to the run (Residential, Urban Neighborhood) land use.



City Limits

20) From the rnh (Residential, Medium High Density) land use to the run (Residential, Urban Neighborhood) land use.