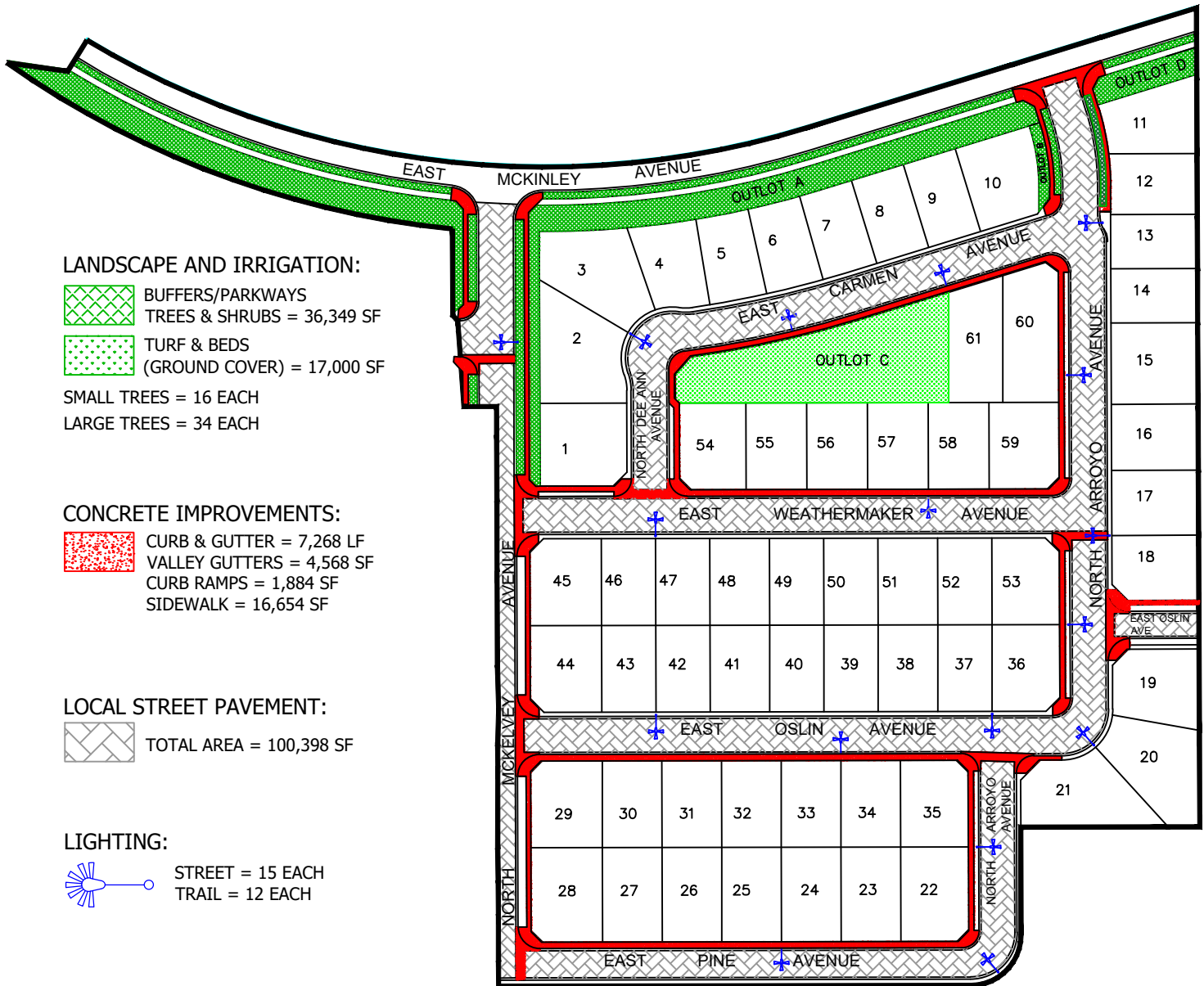






PUBLIC WORKS DEPARTMENT
LAND PLANNING & SUBDIVISION INSPECTION SECTION
FEATURES TO BE ADDED BY ANNEXATION NO. 154
COMMUNITY FACILITIES DISTRICT NO. 11


NOT TO SCALE
February 14, 2025




LANDSCAPE AND IRRIGATION:

-  BUFFERS/PARKWAYS
TREES & SHRUBS = 36,349 SF
-  TURF & BEDS
(GROUND COVER) = 17,000 SF
- SMALL TREES = 16 EACH
- LARGE TREES = 34 EACH

CONCRETE IMPROVEMENTS:

-  CURB & GUTTER = 7,268 LF
- VALLEY GUTTERS = 4,568 SF
- CURB RAMPS = 1,884 SF
- SIDEWALK = 16,654 SF

LOCAL STREET PAVEMENT:

-  TOTAL AREA = 100,398 SF

LIGHTING:

-  STREET = 15 EACH
- TRAIL = 12 EACH