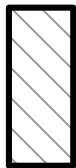
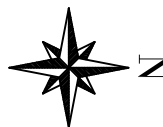


EXHIBIT B

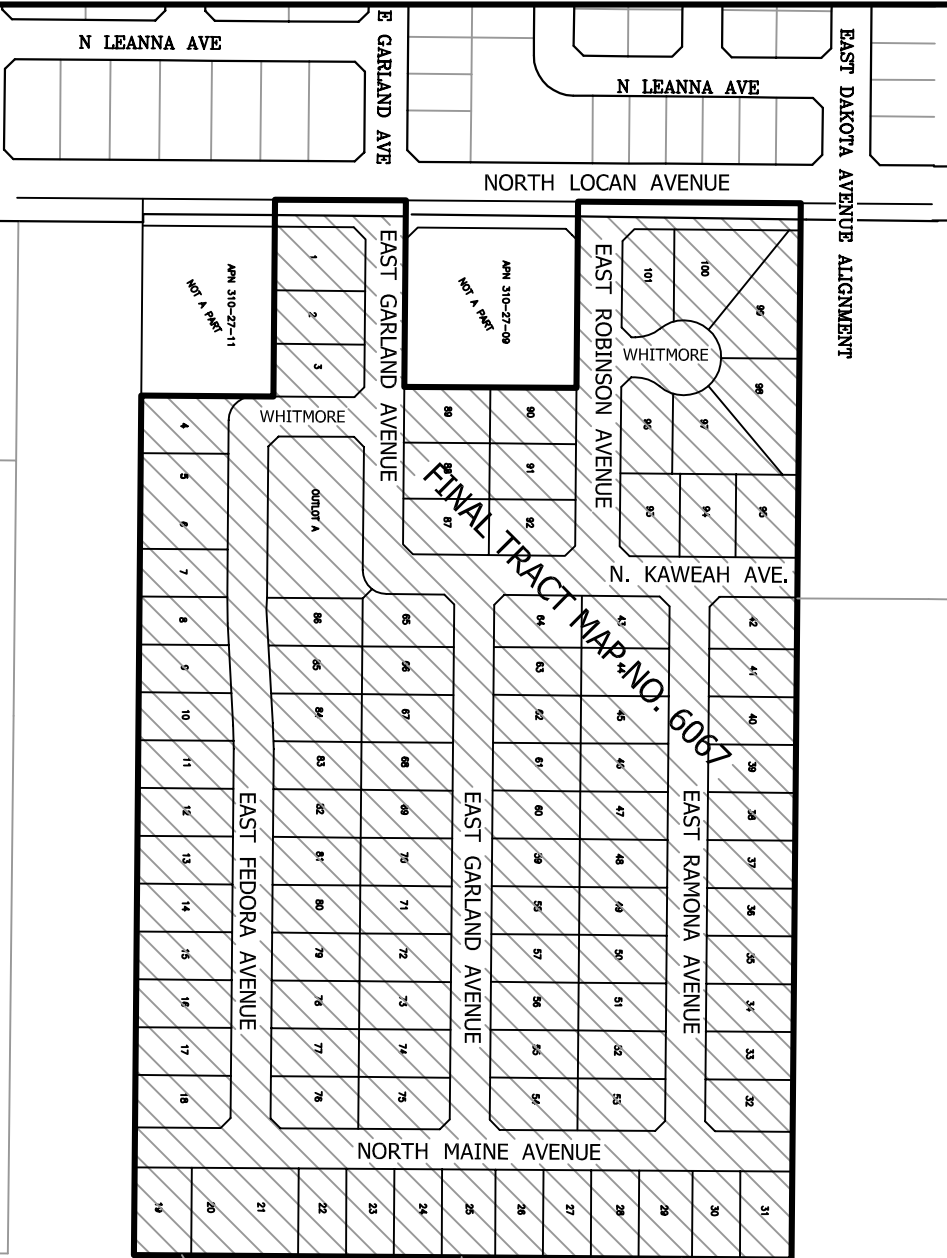
TERRITORY TO BE ANNEXED TO THE CITY CFD NO. 11



BOUNDARY LINE OF NEW TERRITORY



NOT TO SCALE



DOC. _____

FILED IN THE OFFICE OF THE CITY CLERK OF THE CITY OF FRESNO THIS ____ DAY OF _____, 2016.

ATTEST:

WYONNE SPENCE, CMC
CITY CLERK OF THE CITY OF FRESNO

BY: _____

DEPUTY



I HEREBY CERTIFY THAT THE ANNEXATION MAP NO. 70 OF THE COMMUNITY FACILITIES DISTRICT NO. 11, CITY OF FRESNO, COUNTY OF FRESNO, STATE OF CALIFORNIA WAS ADOPTED BY THE COUNCIL OF THE CITY OF FRESNO BY RESOLUTION NO. 2016-____ ON _____, 2016.

ATTEST:

WYONNE SPENCE, CMC
CITY CLERK OF THE CITY OF FRESNO

BY: _____

DEPUTY



THIS ANNEXATION MAP NO. 70 OF THE CITY OF FRESNO COMMUNITY FACILITIES DISTRICT NO. 11, WAS FILED THIS ____ DAY OF _____, 2016 AT THE HOUR OF ____ O'CLOCK ____ M AT BOOK 44, PAGE ____ OF MAPS OF ASSESSMENT AND COMMUNITY FACILITIES DISTRICTS IN THE OFFICE OF THE COUNTY RECORDER IN THE COUNTY OF FRESNO, STATE OF CALIFORNIA

PAUL DICTOS, C.P.A.
COUNTY RECORDER OF THE COUNTY OF FRESNO

BY: _____

REFERENCE: BOUNDARY MAP OF CITY OF FRESNO COMMUNITY FACILITIES DISTRICT NO. 11, RECORDED NOVEMBER 8, 2005 AT BOOK 41, PAGE 61 OF ASSESSMENT AND COMMUNITY FACILITIES DISTRICTS IN THE OFFICE OF THE RECORDER IN THE COUNTY OF FRESNO, STATE OF CALIFORNIA

NOTE: FOR PARCEL DIMENSIONS, SEE ASSESSOR'S MAP BOOK PAGES _____

CITY OF FRESNO - Public Works Department

ANNEXATION MAP NO. 70
OF COMMUNITY FACILITIES DISTRICT
NO. 11 OF THE CITY OF FRESNO,
FRESNO COUNTY, CALIFORNIA

CITY ENGINE _____ OFFICE ENGINE _____

DR. BY: ALB _____ SHEET NO. 1
DATE: March 21, 2016 OF 1 SHEETS

SCALE: _____