

City of **FRESNO**  
 Department of Public Utilities | Solid Waste Division  
 1325 El Dorado St | Fresno, CA 93706  
 www.fresno.gov/publicutilities | 559-621.1877  
 DPUS SW Staff: brandenki



## Blackstone/Abby Business Corridor

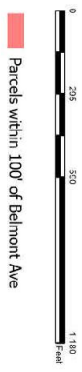
Map Scale 1:2,740  
 0 170 340 680 Feet  
 Print Date Jan 12, 2023

Parcels within 100' of Blackstone & Abby

*Disclaimer*  
 The data represented on this map has been compiled by the best methods available. Accuracy is contingent upon the source information as compiled by various agencies and departments both internal and external to the City of Fresno, CA. Users of the data represented on this map are hereby notified that the primary information sources should be consulted for verification of the information contained herein. The City Of Fresno and the companies contracted to develop these data assume no legal responsibility for the information or accuracy contained on this map. It is strictly forbidden to sell or reproduce these maps or data for any reason without the written consent of the City of Fresno.



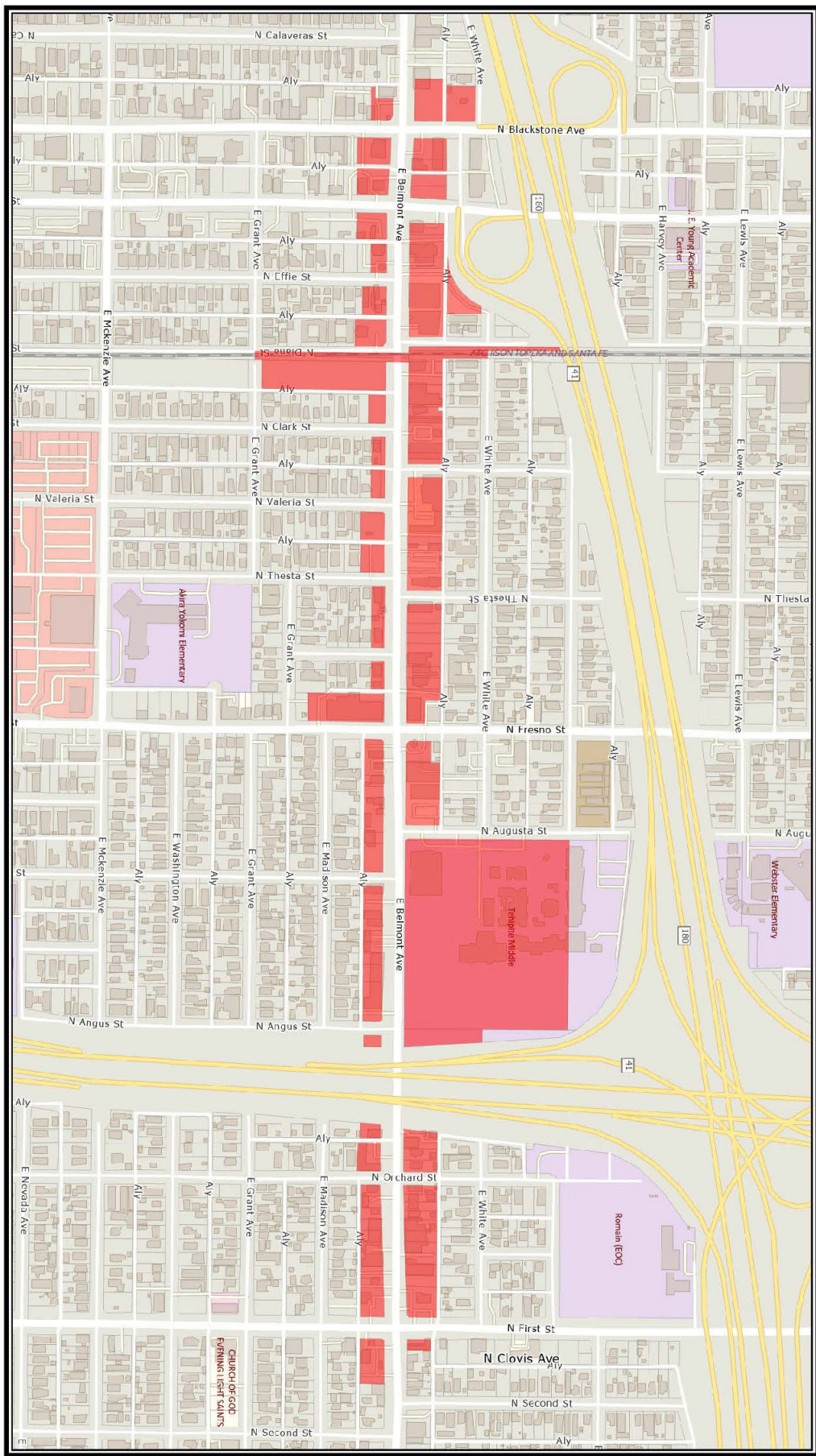
Map Scale  
 1" = 651'



Print Date  
 Jan 18, 2023

### Belmont Avenue Corridor (Blackstone to First)

Parcels within 100' of Belmont Ave



The data presented on this map was derived from the most current information available. Accuracy is contingent upon the source information as compiled by the City of Fresno. The City of Fresno does not warrant the accuracy of the information presented on this map. The City of Fresno is not responsible for any errors or omissions on this map. The City of Fresno is not responsible for any damages or liabilities arising from the use of this map. The City of Fresno is not responsible for any damages or liabilities arising from the use of this map. The City of Fresno is not responsible for any damages or liabilities arising from the use of this map.