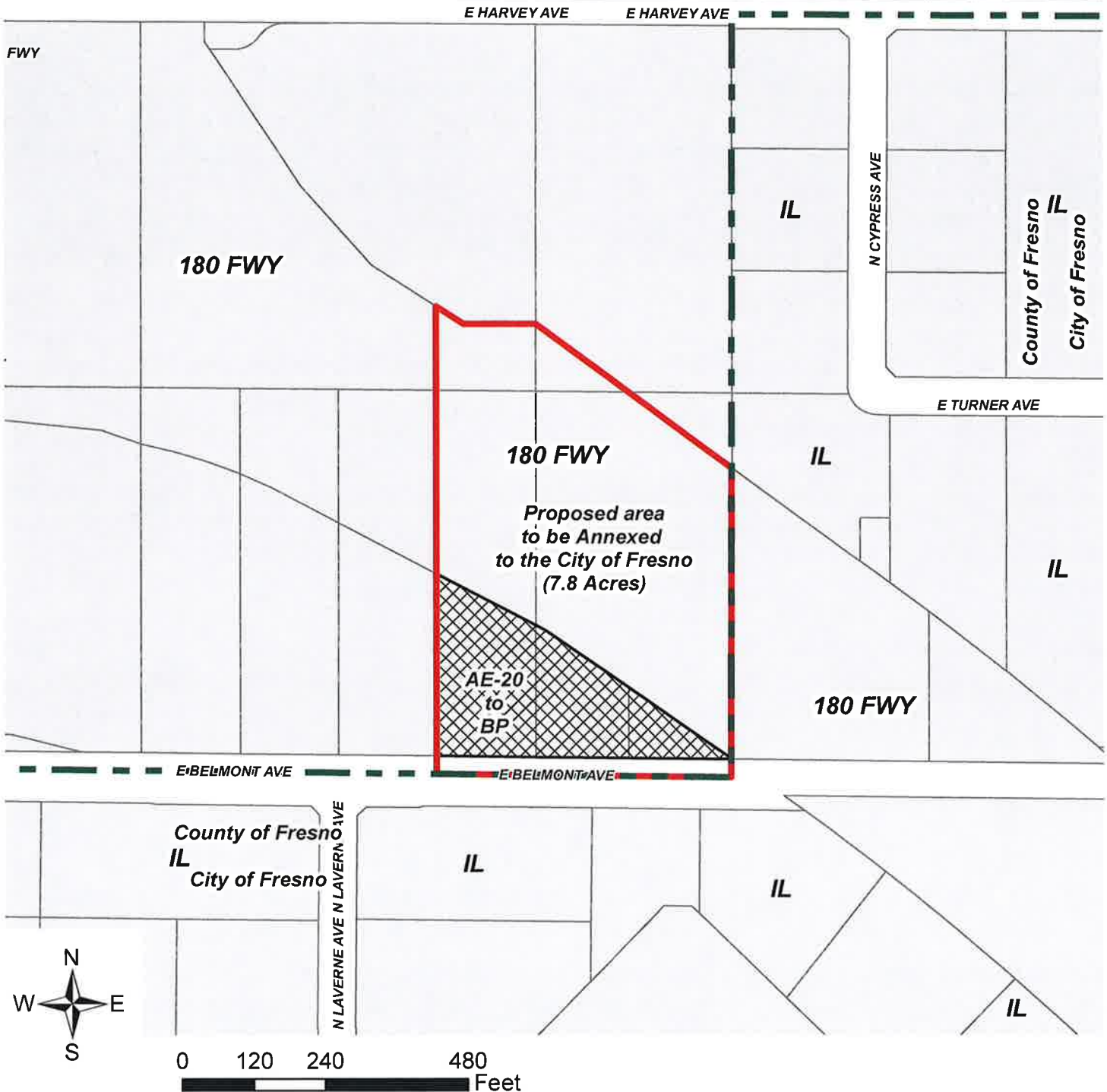


EXHIBIT E - PRE-ZONING

Detachment from Fresno County Fire Protection District and King River Conservation District and Annexation to the City of Fresno.



ANX-17-007

APN: 310-120-30T (partial), 310-120-38, 36, 40 and 310-132-10T, 18T, 20T, 25T, 31T, 32T, 35T, 39T
6222, 6252, 6262 East Belmont Ave

City Limits

Proposed area to be Annexed to the City of Fresno

From the AE-20 (Ag, Exclusive 20-Acres) County of Fresno zone district to the City of Fresno BP (Business Park) zone district