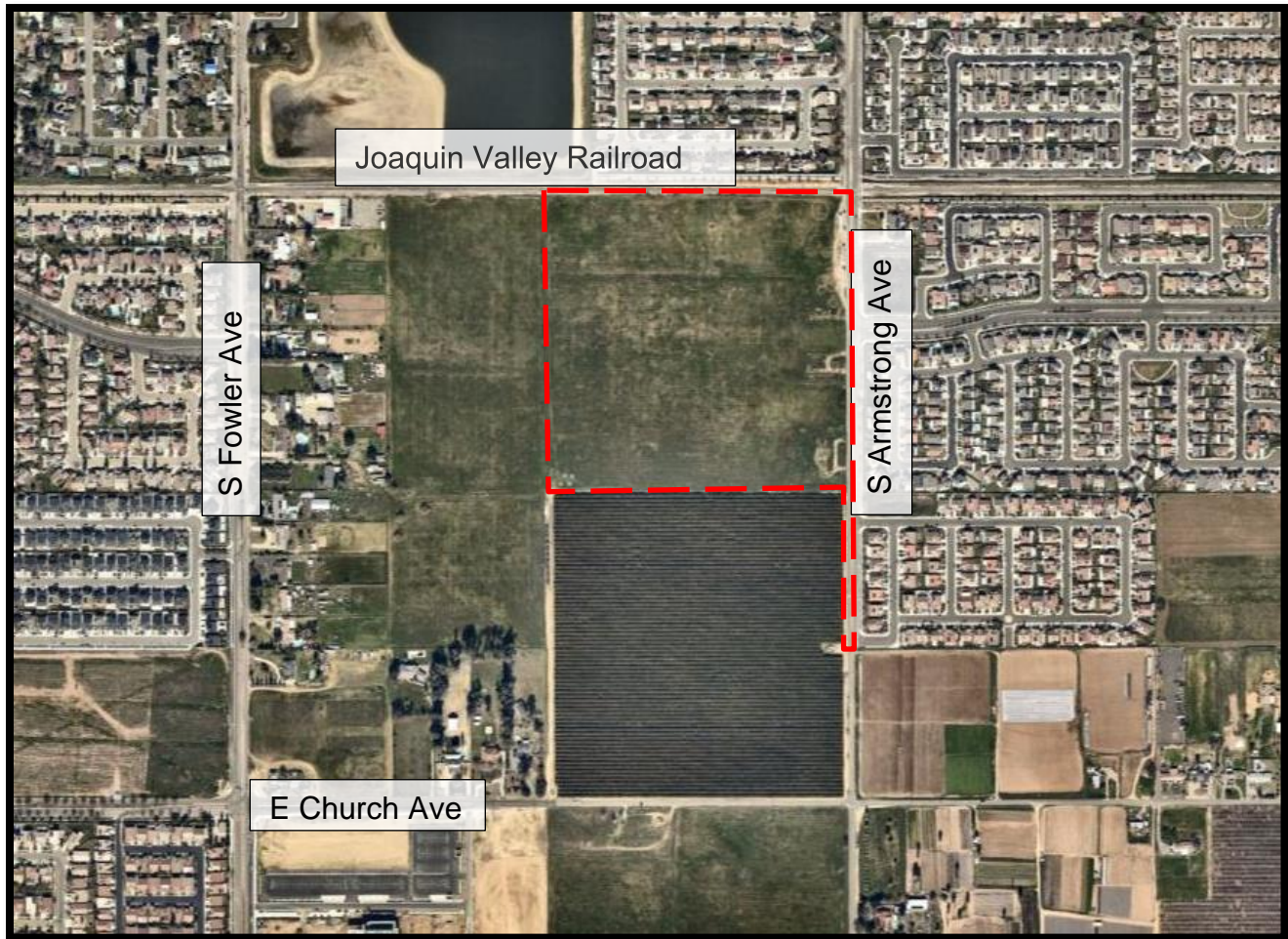


## Exhibit C

# AERIAL MAP



## PLANNING AND DEVELOPMENT DEPARTMENT

### Applications

Pre-zone Application No. P21-05373

Tract Map Application T-6376  
Annexation Application No. P21-05090

### APN(s):

316-160-16S, -17S, -43S, -59S  
and -61S  
west side of S. Armstrong  
Avenue, between the San  
Joaquin Valley Railroad and East  
Church Avenue

### Zone District

Current: AL 20 (*Limited  
Agriculture*) - Fresno County

Proposed: RS-5/UGM (*Single-  
Family Residential, Medium  
Density/Urban Growth  
Management*)

### Proposed Land Use

### Designation

Medium Density Residential

## LEGEND



**T-6376**  
±34.70 acres

