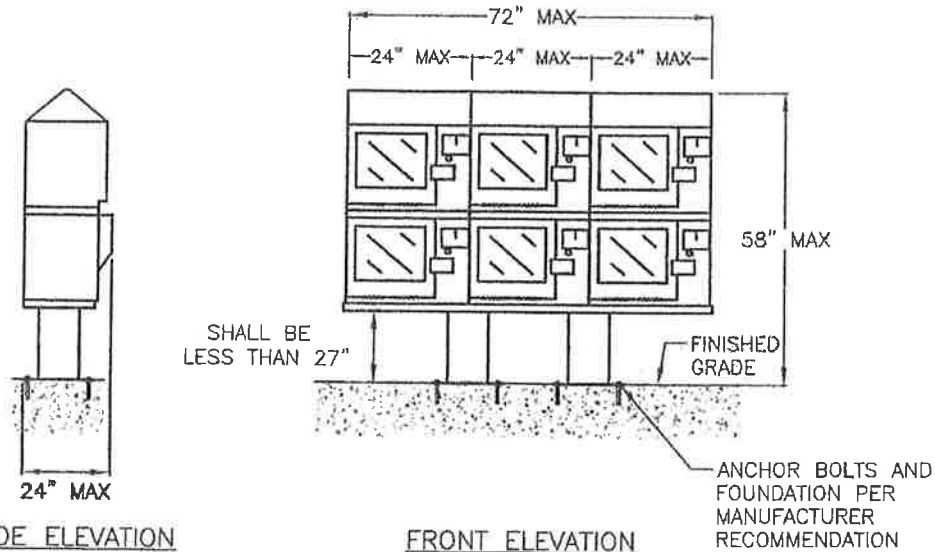


PLAN VIEW



SIDE ELEVATION

FRONT ELEVATION

NOTES:

1. REQUIREMENTS FOR NEWSRACKS IN SPECIAL DISTRICTS CAN BE FOUND IN CHAPTER 13 ARTICLE 7 OF THE FRESNO MUNICIPAL CODE.
2. NEWSRACK DIMENSIONS SHALL BE APPROVED BY CITY ENGINEER.
3. NEWSRACK WINDOWS SHALL OPEN TOWARD CENTER OF SIDEWALK.
4. CORNERS SHALL HAVE A MINIMUM RADIUS OF 1/8" PER PROWAG 11B-307.3.1
5. MODULAR NEWSRACK SHALL BE MODEL 100 BY MECHANISM EXCHANGE & REPAIR INC., OR APPROVED EQUAL.
6. NEWSRACK SHALL BE BLACK UNLESS OTHERWISE APPROVED BY CITY ENGINEER.