

EXHIBIT E

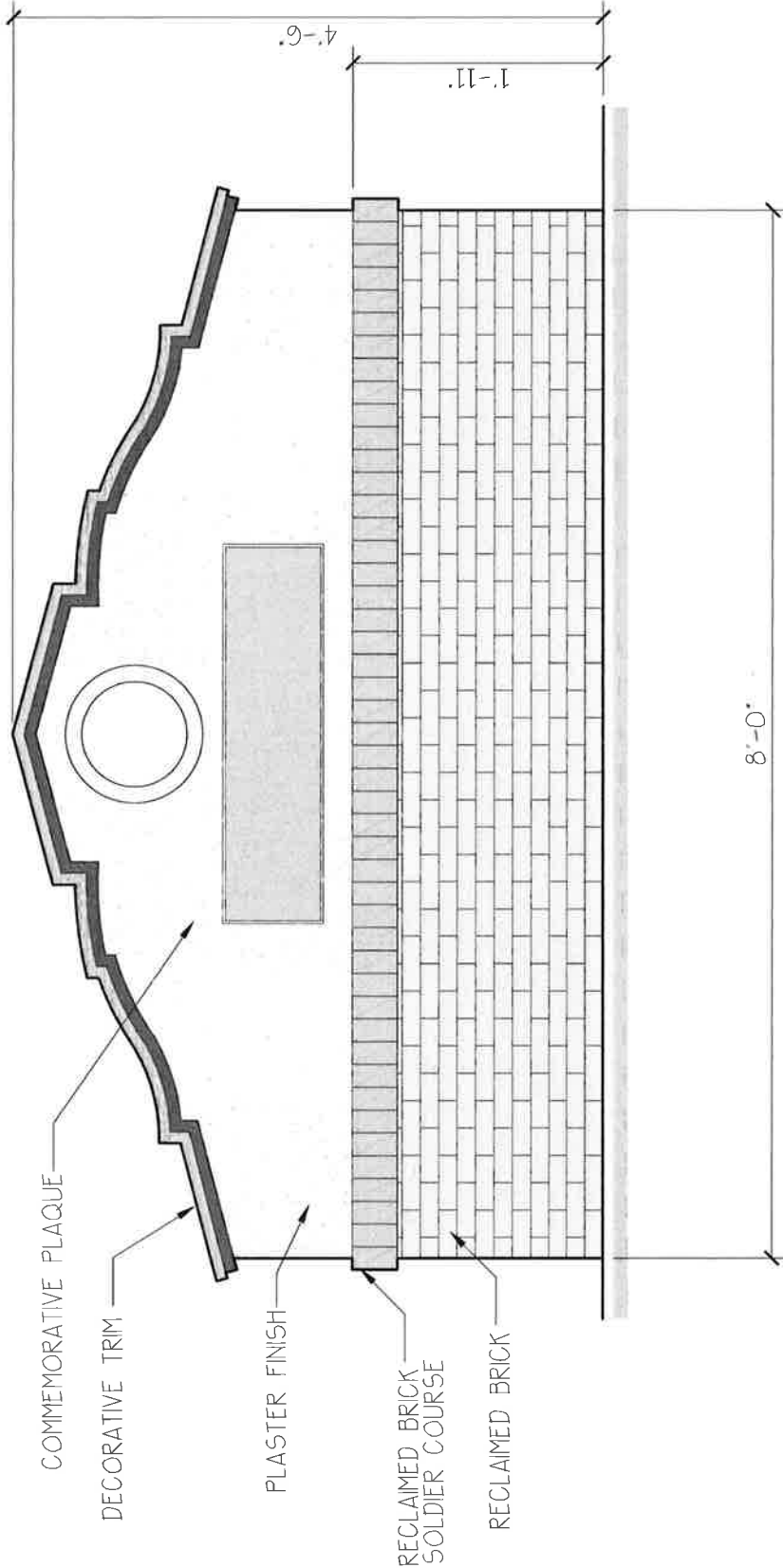
ASS3

Date: 11/14/2016

NEW PERIMETER FENCING FOR:
PRODUCERS DAIRY FOODS INC.
450 E. BELMONT AVE.
APN. 459-003-023

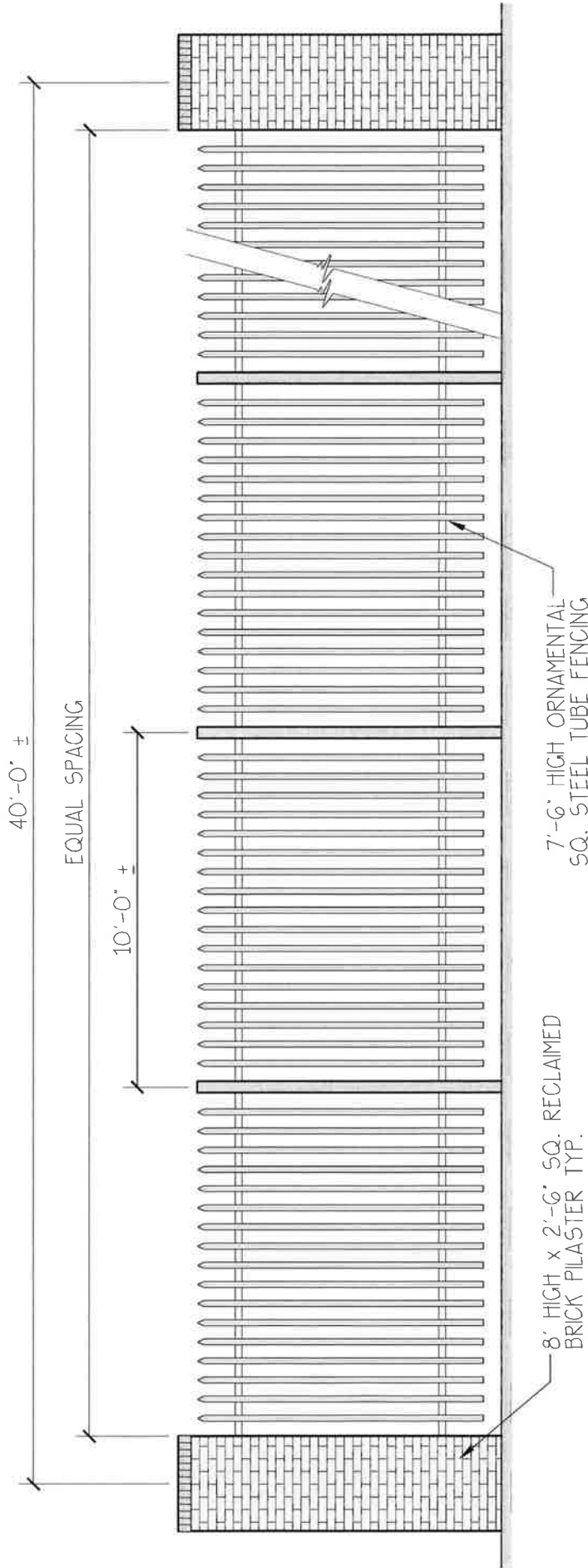


JEFF CAZALY
ARCHITECT
735 W. ALLIUM, SUITE 104
FRESNO, CA 93711
COMMERCIAL AND
INDUSTRIAL DESIGN
jeff@jeffcazaly.com Tel: (559) 291-1889 Fax: (559) 291-1882



COMMEMORATIVE MONUMENT

SCALE: 1/4" = 1'-0"



TYP. PERIMETER FENCE SECTION

SCALE: 1/4" = 1'-0"

J E F F C A Z A L Y
ARCHITECT
 705 W. ALLIANCE SUITE 104
 FRESNO, CA 93711

COMMERCIAL AND INDUSTRIAL DESIGN

jeff@jcazalyconsulting.com Tel: (559) 291-1889
 Lic., NO. C 26460 Fax: (559) 291-1882

LICENSED ARCHITECT

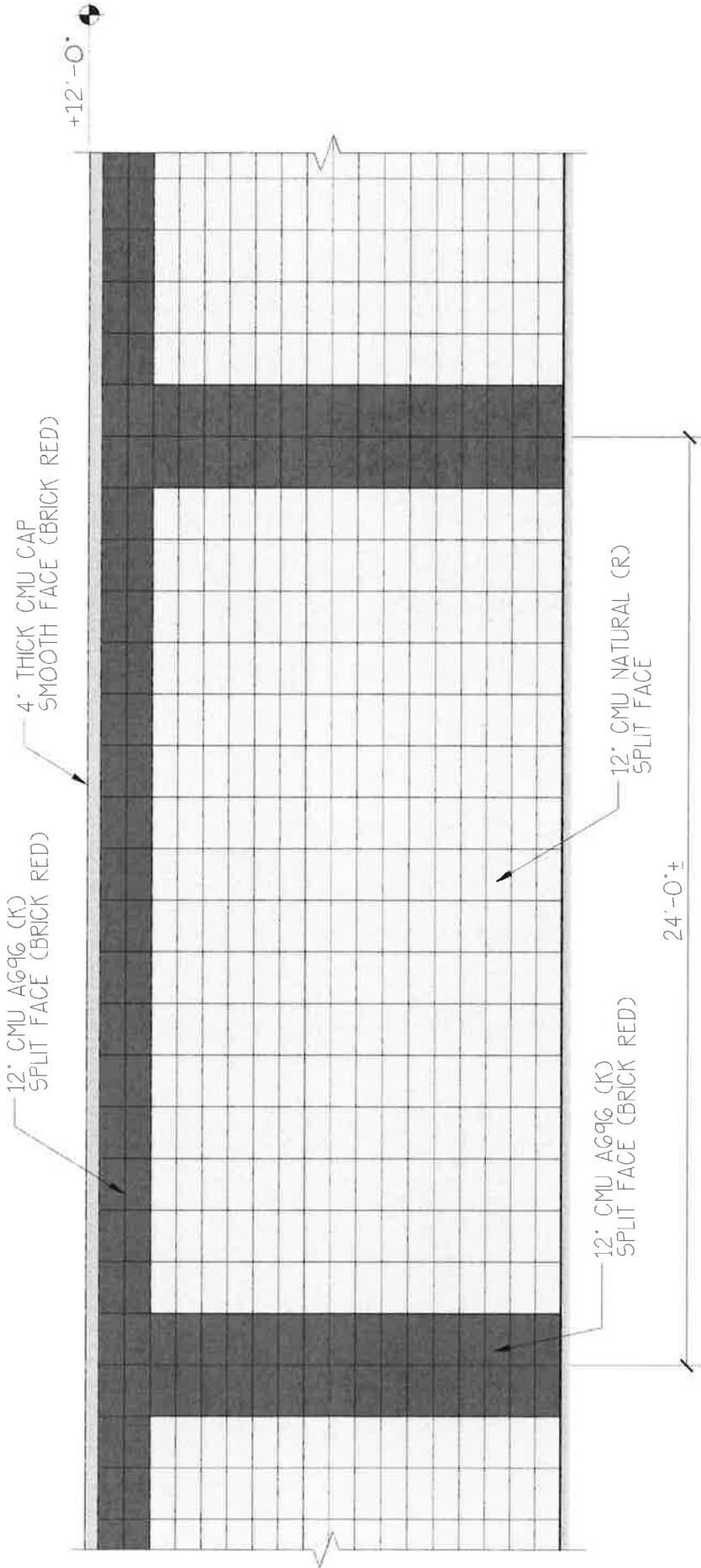
JEFFREY A. CAZALY
 No. C-26460
 RENEWAL DATE
 8-31-17

STATE OF CALIFORNIA

NEW PERIMETER FENCING FOR:
PRODUCERS DAIRY FOODS INC.
 450 E. BELMONT AVE
 A.P.N. 459-003-023

Date: 11/14/2016

AS2



TYP. PERIMETER CMU SOUND WALL ELEVATION

SCALE: 1/4" = 1'-0"

JEFF CAZALY ARCHITECT
 735 W. ALLUVIAL SUITE 04
 FRESNO, CA 93711

COMMERCIAL AND INDUSTRIAL DESIGN

jeff@jcazalyconsulting.com Tel: (559) 291-1889
 Lic. NO. C 26460 Fax: (559) 291-1882



**NEW PERIMETER FENCING FOR:
 PRODUCERS DAIRY FOODS INC.**
 450 E. BELMONT AVE
 A.P.N. 459-003-023

AS4

Date: 11/14/2016