

EXHIBIT B

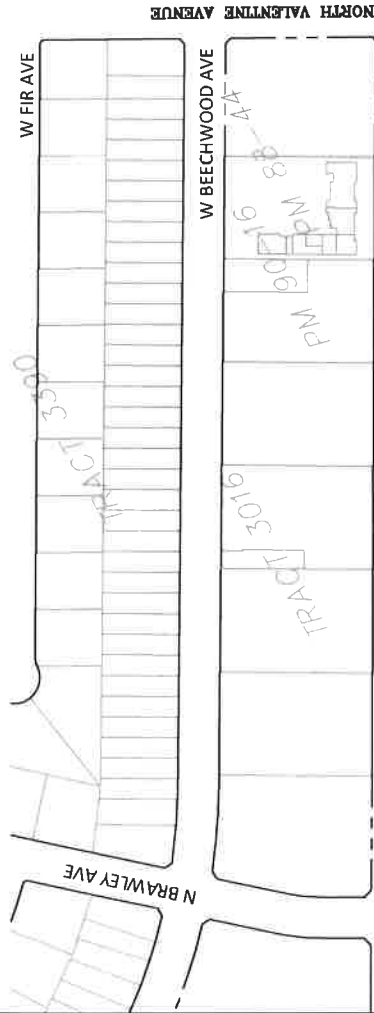
TERRITORY TO BE ANNEXED TO THE CITY CFD NO. 9



BOUNDARY LINE OF NEW TERRITORY



NOT TO SCALE



DOC: _____

FILED IN THE OFFICE OF THE CITY CLERK OF THE CITY OF FRESNO THIS _____ DAY OF _____, 2017.

ATTEST:



YVONNE SPENCE, CMC
CITY CLERK OF THE CITY OF FRESNO

BY: _____
DEPUTY

I HEREBY CERTIFY THAT THE ANNEXATION MAP NO. 15 OF THE COMMUNITY FACILITIES DISTRICT NO. 9, CITY OF FRESNO, COUNTY OF FRESNO, STATE OF CALIFORNIA WAS ADOPTED BY THE COUNCIL OF THE CITY OF FRESNO BY RESOLUTION NO. 2017-____ ON _____, 2017.

ATTEST:



YVONNE SPENCE, CMC
CITY CLERK OF THE CITY OF FRESNO

BY: _____
DEPUTY

THIS ANNEXATION MAP NO. 15 OF THE CITY OF FRESNO COMMUNITY FACILITIES DISTRICT NO. 9, WAS FILED THIS _____ DAY OF _____, 2017 AT THE HOUR OF _____ O'CLOCK _____ M AT BOOK 44, PAGE _____ OF MAPS OF ASSESSMENT AND COMMUNITY FACILITIES DISTRICTS IN THE OFFICE OF THE COUNTY RECORDER IN THE COUNTY OF FRESNO, STATE OF CALIFORNIA.

PAUL DICTOS, C.P.A.
COUNTY RECORDER OF THE COUNTY OF FRESNO

BY: _____

REFERENCE: BOUNDARY MAP OF CITY OF FRESNO COMMUNITY FACILITIES DISTRICT NO. 9, RECORDED DECEMBER 4, 2008 AT BOOK 42, PAGE 100 OF ASSESSMENT AND COMMUNITY FACILITIES DISTRICTS IN THE OFFICE OF THE RECORDER IN THE COUNTY OF FRESNO, STATE OF CALIFORNIA
NOTE: FOR PARCEL DIMENSIONS, SEE ASSESSOR'S MAP BOOK PAGES

CITY OF FRESNO - Public Works Department	
ANNEXATION MAP NO. 15 OF COMMUNITY FACILITIES DISTRICT NO. 9 OF THE CITY OF FRESNO, FRESNO COUNTY, CALIFORNIA	COUNTY: _____ BOOK: _____ OFFICE: _____ CITY CLERK: _____ DATE: _____ FILE NO.: _____ OF _____ SHEETS OF _____ SHEETS FILED: February 15, 2017 SCALE: _____ I.B. 1177