

RECEIVED

Agenda Item: 11:00 A.M. ID#14-422

Council Date: 10/23/2014

2014 OCT 20 AM 8 12

# FRESNO CITY COUNCIL

CITY CLERK, FRESNO CA



## Supplemental Information Packet

Agenda Related Items – Meeting of October 23, 2014

Supplemental Packet Date: October 20, 2014

### Item(s)

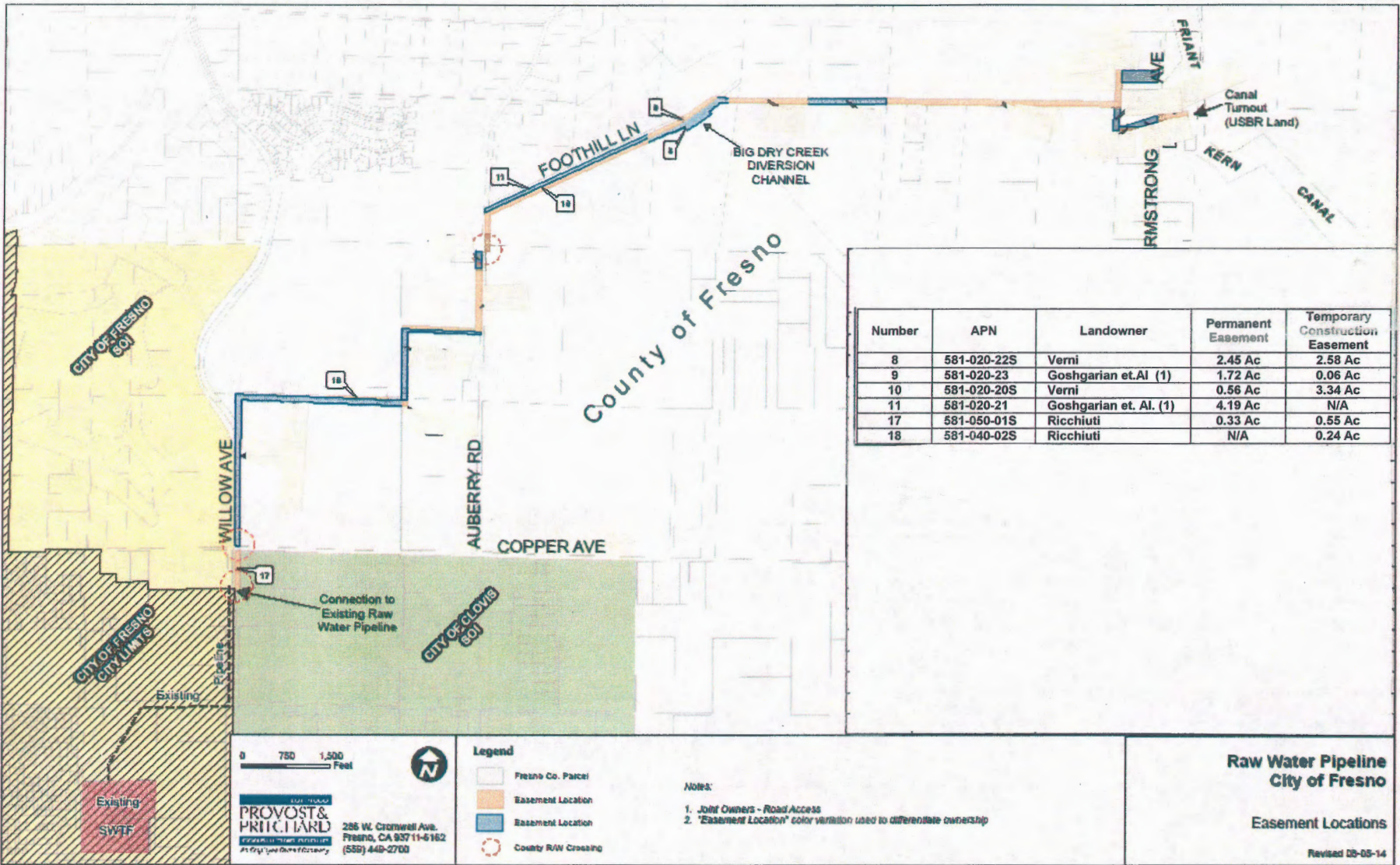
**11:00 A.M. File ID# 14-422** – CONTINUED HEARING to consider a Resolution of Public Use and Necessity for Acquisition of Permanent Utility Easements and Temporary Construction Easements from APNs 580-040-02S owned by Frances M. Ricchiuti and Patrick V. Ricchiuti, Co-Trustees of the Frances M. Ricchiuti Family Trust and Patrick V. Ricchiuti, Trustee, The Ricchiuti GST Nonexempt QTIP Trust; 580-020-20S and 580-020-22S owned by Leonard and Nicholas Verni; 580-050-01S owned by Patrick Vincent Ricchiuti, Trustee of the Patrick Vincent Ricchiuti Family Trust; and 580-020-21 and 580-020-23 owned by George C. Goshgarian, Kathleen A. Goshgarian, Michael Morales, Leonard Verni, Nicholas Verni, Steven G. Fogg Family Partnership, and Christopher T. Lum as Sole Trustee of the Steven C.Y. Lum and Catherine J. Lum Trust

#### **Supplemental Information:**

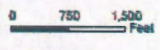
Any agenda related public documents received and distributed to a majority of the City Council after the Agenda Packet is printed are included in Supplemental Packets. Supplemental Packets are produced as needed. The Supplemental Packet is available for public inspection in the City Clerk's Office, 2600 Fresno Street, during normal business hours (main location pursuant to the Brown Act, G.C. 54957.5(2)). In addition, Supplemental Packets are available for public review at the City Council meeting in the City Council Chambers, 2600 Fresno Street. Supplemental Packets are also available on-line on the City Clerk's website.

#### **Americans with Disabilities Act (ADA):**

The meeting room is accessible to the physically disabled, and the services of a translator can be made available. Requests for additional accommodations for the disabled, sign language interpreters, assistive listening devices, or translators should be made one week prior to the meeting. Please call City Clerk's Office at 621-7650. Please keep the doorways, aisles and wheelchair seating areas open and accessible. If you need assistance with seating because of a disability, please see Security.



Number	APN	Landowner	Permanent Easement	Temporary Construction Easement
8	581-020-22S	Verni	2.45 Ac	2.58 Ac
9	581-020-23	Goshgarian et. Al (1)	1.72 Ac	0.06 Ac
10	581-020-20S	Verni	0.56 Ac	3.34 Ac
11	581-020-21	Goshgarian et. Al. (1)	4.19 Ac	N/A
17	581-050-01S	Ricchiuti	0.33 Ac	0.55 Ac
18	581-040-02S	Ricchiuti	N/A	0.24 Ac



- Legend**
- Fresno Co. Parcel
  - Easement Location
  - Easement Location
  - County R/W Crossing

- Notes:**
1. Joint Owners - Road Access
  2. "Easement Location" color variation used to differentiate ownership

**PROVOST & PRITCHARD**  
 285 W. Cromwell Ave.  
 Fresno, CA 93711-5162  
 (559) 440-2700

**Raw Water Pipeline  
 City of Fresno**

**Easement Locations**

Revised 02-05-14

G:\Clients\Fresno\_City of - 158118510702-Raw Water Pipeline\GIS\Map\Raw-Exhibit\survey\_easements\_2014.mxd