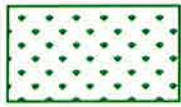




**CITY OF  
FRESNO**  
**PUBLIC WORKS DEPARTMENT**  
TRAFFIC AND ENGINEERING SERVICES DIVISION  
FEATURES TO BE ADDED BY ANNEXATION NO. 54  
COMMUNITY FACILITIES DISTRICT NO. 11  
TRACT 6073 "NO PHASES"



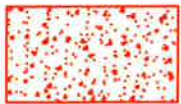
NOT TO SCALE  
April 29, 2014



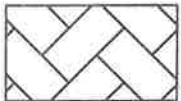
**LANDSCAPE AND IRRIGATION:**  
TREES AND SHRUBS:  
BUFFERS/PARKWAYS/OUTLOT B = 13,860 SF  
WINERY ENTRANCE MEDIAN = 630 SF  
TURF AND BEDS:  
OUTLOT A & B = 35,252 SF

LARGE TREES = 51 EA

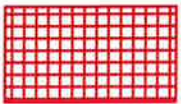
SMALL TREES = 3 EA



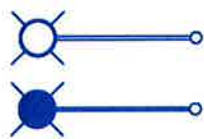
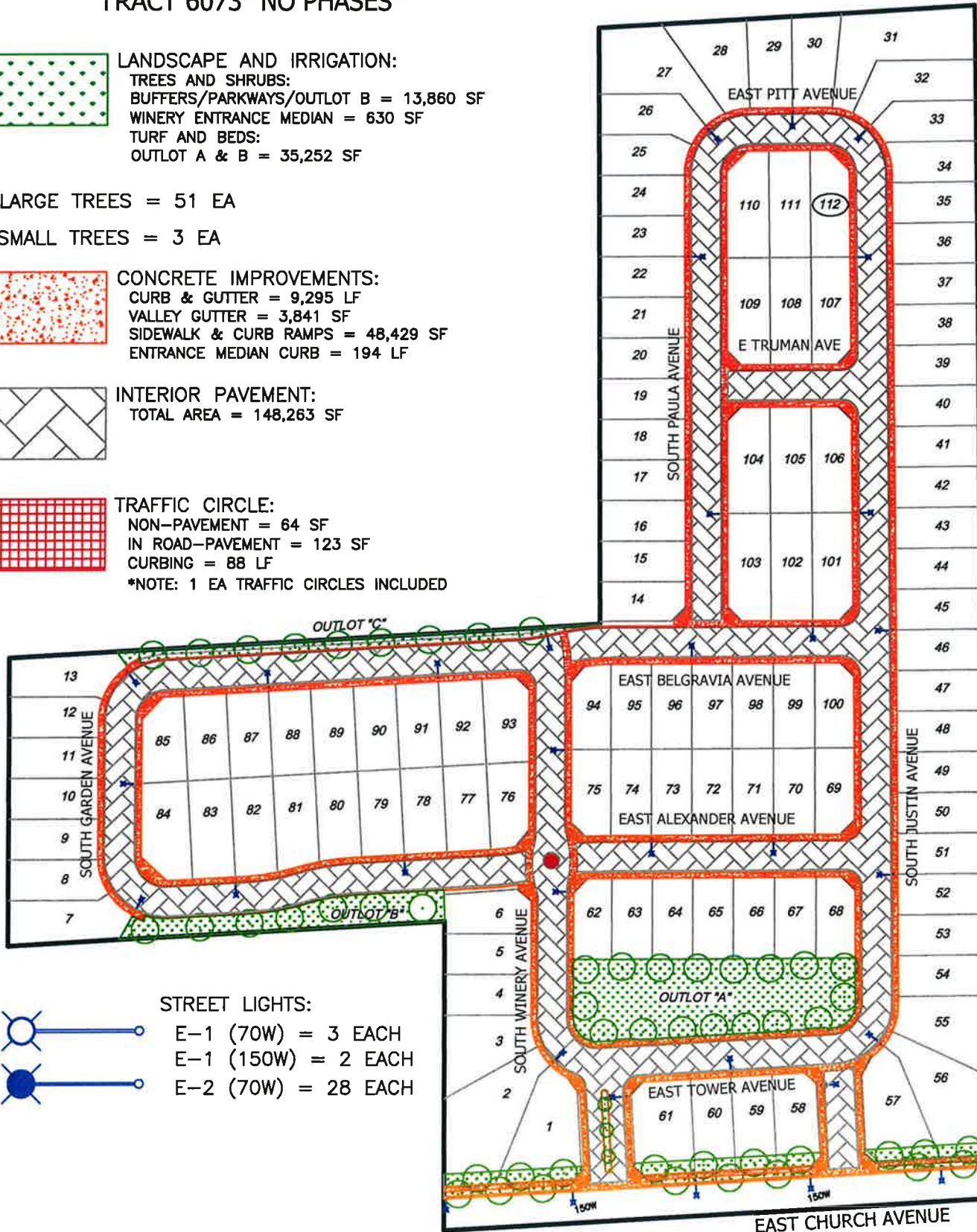
**CONCRETE IMPROVEMENTS:**  
CURB & GUTTER = 9,295 LF  
VALLEY GUTTER = 3,841 SF  
SIDEWALK & CURB RAMPS = 48,429 SF  
ENTRANCE MEDIAN CURB = 194 LF



**INTERIOR PAVEMENT:**  
TOTAL AREA = 148,263 SF



**TRAFFIC CIRCLE:**  
NON-PAVEMENT = 64 SF  
IN ROAD-PAVEMENT = 123 SF  
CURBING = 88 LF  
\*NOTE: 1 EA TRAFFIC CIRCLES INCLUDED



**STREET LIGHTS:**  
E-1 (70W) = 3 EACH  
E-1 (150W) = 2 EACH  
E-2 (70W) = 28 EACH