

South Central Fresno AB 617 Community Truck Reroute Study and Fresno Community Environmental Health Impact Assessment

Andreina Aguilar,
Project Manager



UNIVERSITY OF CALIFORNIA
MERCED
COMMUNITY AND LABOR CENTER



SOUTH CENTRAL FRESNO AB617 COMMUNITY TRUCK REROUTE STUDY

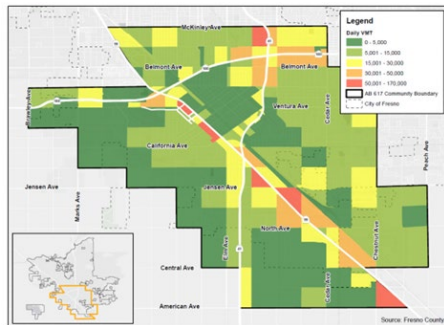


PRESENTED BY ARCADIS IN PARTNERSHIP WITH KATHERINE PADILLA & ASSOCIATES

August 29, 2024

TECHNICAL ANALYSIS OVERVIEW





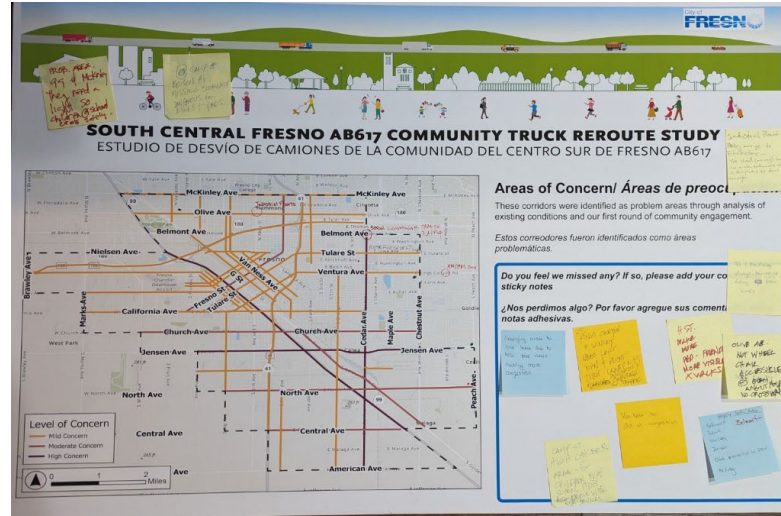
Feasible Reroute Strategies



FRESNO COMMUNITY ENVIRONMENTAL HEALTH IMPACT ASSESSMENT
 APRIL 2024
 COMMUNITY AND LABOR CENTER UC MERCED UNIVERSITY OF CALIFORNIA, MERCED



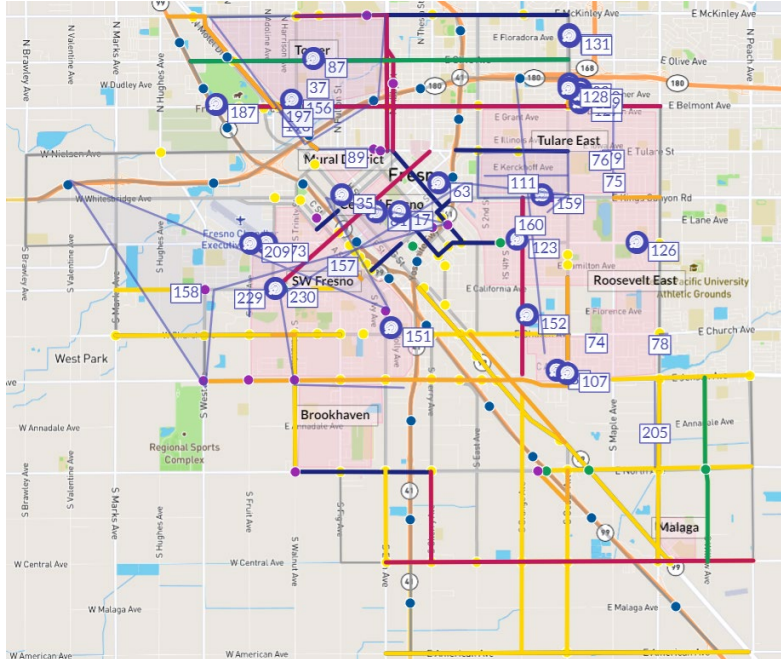
Outreach and Engagement



South Central Fresno AB617 Community Truck Reroute Study

We want to understand your experiences with heavy-duty truck traffic conditions in South Central Fresno.

[Click here to take the survey](#)



Strategy Toolkit

New Sidewalks



Close gaps in the existing sidewalk network

Roadway Maintenance



Remove potholes and cracks that reduces truck maintenance and GHG emissions

Traffic Signalization Improvement



Improve intersections to enhance safety and flow of traffic

New & Improved Crosswalks



Create new crosswalks and restripe existing crosswalks to increase visibility

Traffic Calming



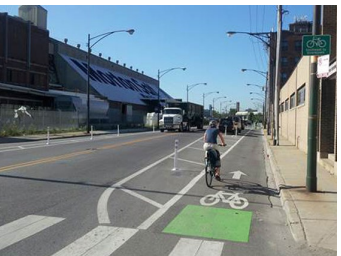
Implement measures to reduce truck speeds or divert trucks

Roadway Reconfiguration



Accommodate alternative modes or alter truck movements

New Bike Lanes



Dedicated travel lanes to enhance bicycle accessibility and safety

Truck-Focused Signage



Informs truck drivers on truck routes and regulated areas

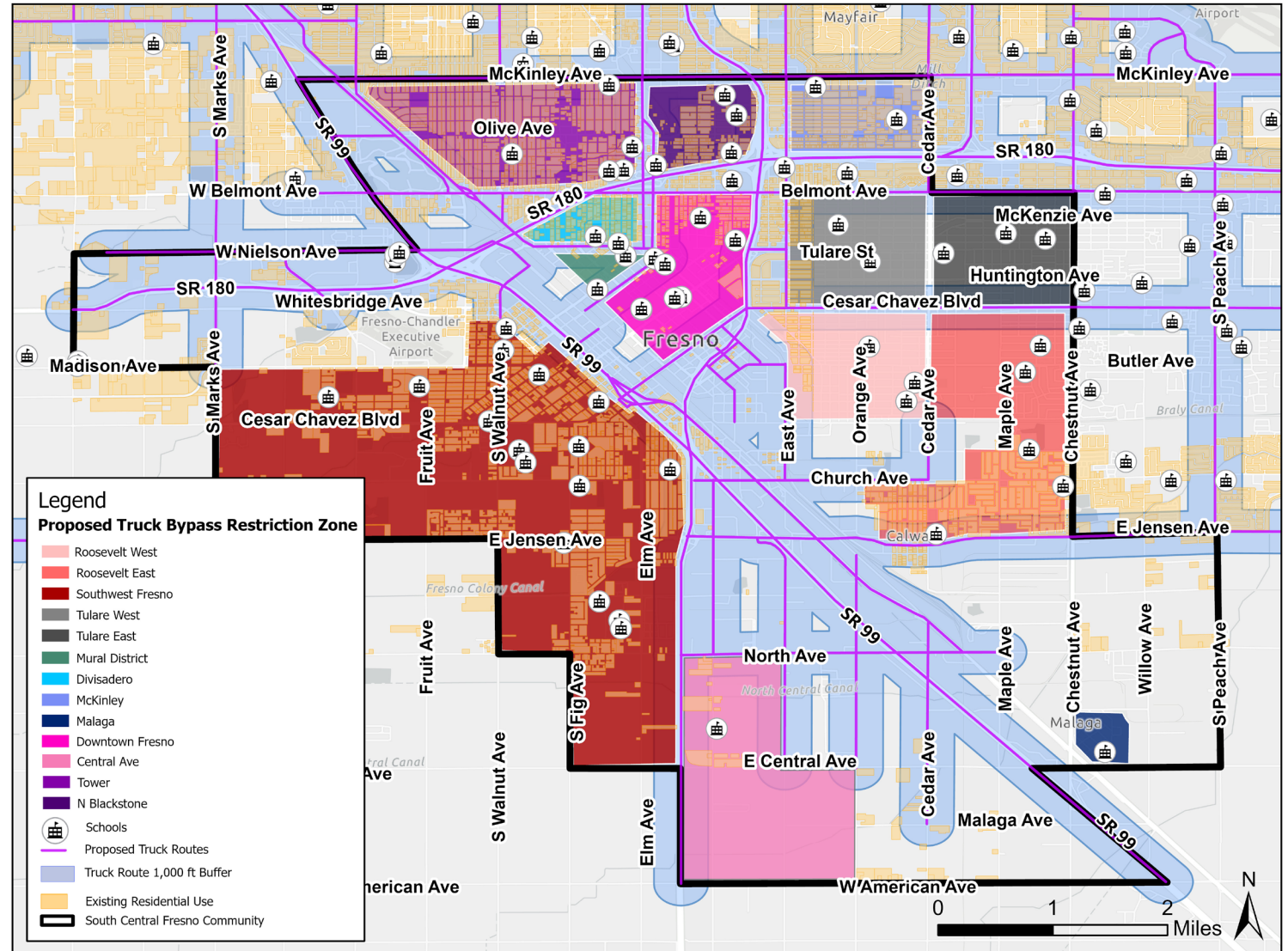
Truck Bypass Restriction Zone



Creates a boundary around sensitive receptors that can be used to limit truck bypass

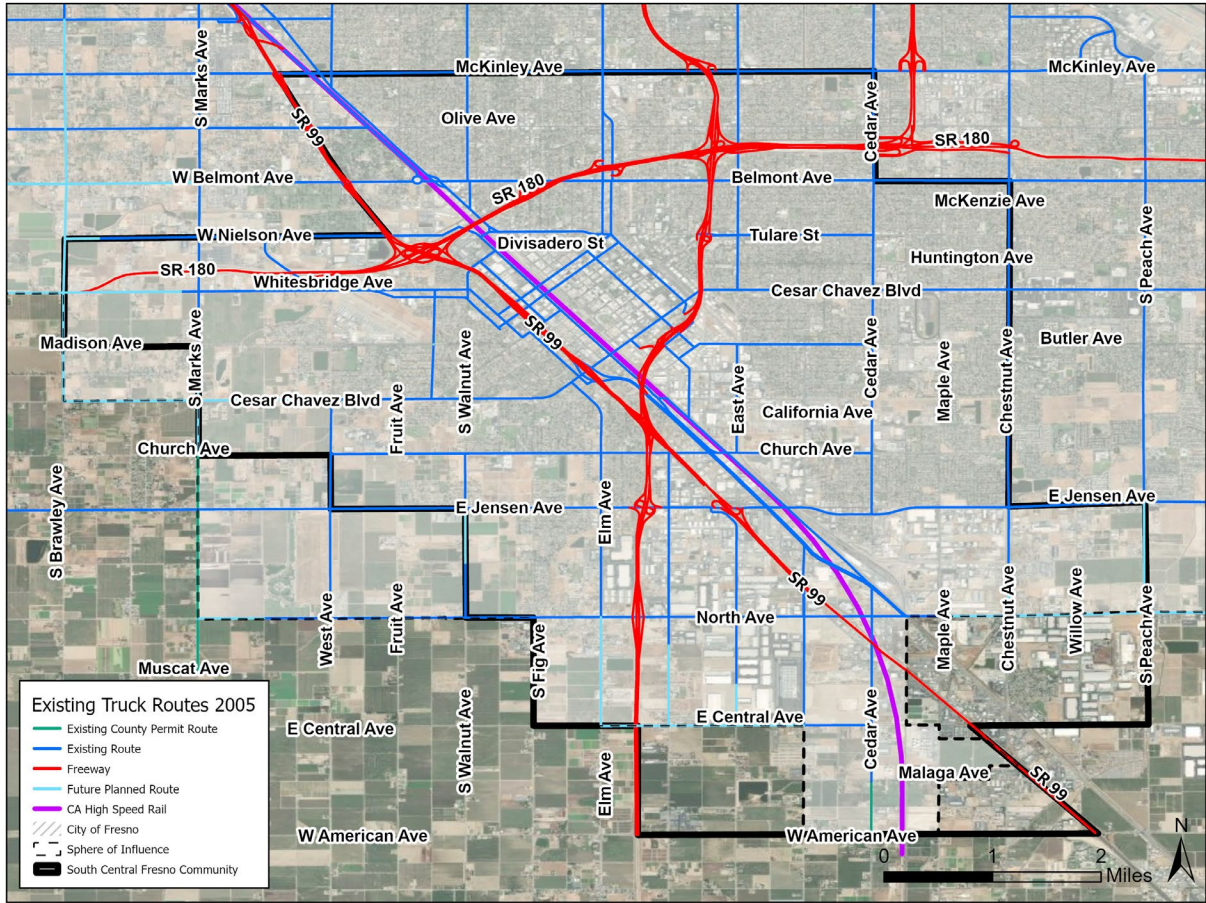
Proposed Truck Bypass Restriction Zones

- Restrict bypass truck travel
- Trucks whose origin or destination are located within these zones can still travel within the zones
- Based on:
 - Location of sensitive receptors (residential areas and schools)
 - UC Merced Health Impact Assessment recommendation to remove truck routes within 1,000 ft of residential areas

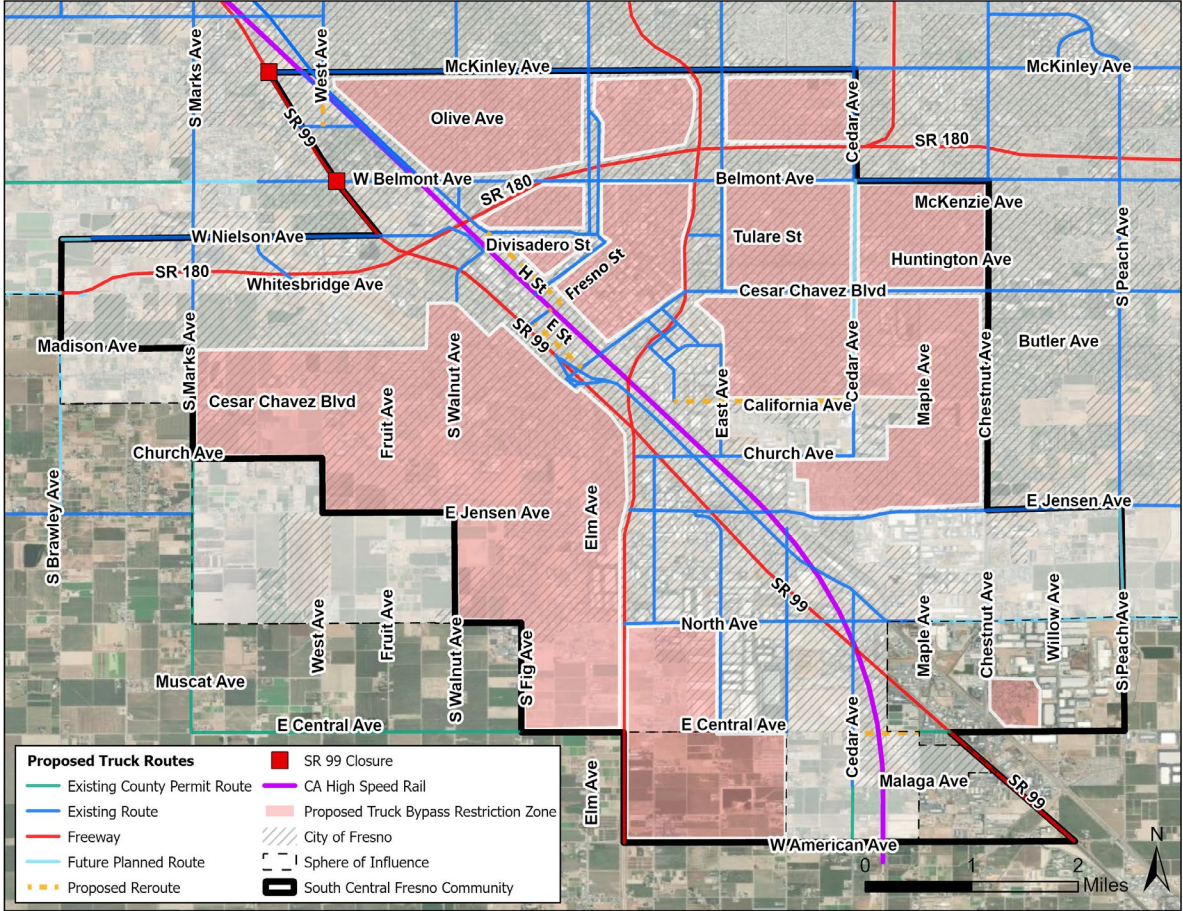


Proposed Truck Routes

43 miles removed
 3.6 miles added as re-routes
 16 square miles of Truck Bypass Restriction Zones



Existing Truck Route Map (2005)



Proposed Truck Route Map

Non-Infrastructure Strategies

Education & Outreach Programming

- Ensures drivers are aware of routing changes and optimizes new routes

Truck Fuel-type, Emissions, and Idling Standards

- Allows trucks to operate efficiently and produce fewer emissions

Truck-specific GPS Administration

- Provides info for critical route restrictions avoiding sensitive receptors

Time-of-Day Restrictions

- Minimizes peak time congestion and improves safety

Enforcement

- Helps maintain order and safety on roadways and deters violations



Thank you.



Next...

UC Merced's Fresno Community Environmental Health Impact
Assessment

THE FRESNO HEALTH IMPACT ASSESSMENT



FRESNO COMMUNITY ENVIRONMENTAL HEALTH IMPACT ASSESSMENT

APRIL 2024

COMMUNITY AND
LABOR CENTER

UC MERCED

UNIVERSITY OF CALIFORNIA, MERCED



UNIVERSITY OF CALIFORNIA
MERCED
COMMUNITY AND LABOR CENTER

 **EPEG**
THE ENVIRONMENTAL AND PERINATAL EPIDEMIOLOGY GROUP

FRESNO HIA

- In April 2024, the **UC Merced Community and Labor Center** released the **Fresno Community Environmental Health Impact Assessment** (“Fresno HIA”).
- The 88-page report was a three-year study funded by City of Fresno/ State of California AB 617.
- The PI and lead author is Sandie Ha, Associate Professor of Public Health at UC Merced.



FRESNO COMMUNITY ENVIRONMENTAL HEALTH IMPACT ASSESSMENT

APRIL 2024

COMMUNITY AND
LABOR CENTER

UC MERCED

UNIVERSITY OF CALIFORNIA, MERCED

FRESNO HIA

- The Fresno HIA report had two broad aims, to assess:
 1. How air pollution exposures influence Fresno residents' risk of common health outcomes across the lifespan and identify who may be more affected.
 2. Residents' health experiences relevant to regional air pollution, and their attitudes towards public policy on the issue.



FRESNO COMMUNITY ENVIRONMENTAL HEALTH IMPACT ASSESSMENT

APRIL 2024

COMMUNITY AND
LABOR CENTER

UC MERCED

UNIVERSITY OF CALIFORNIA, MERCED

POPULATION-BASED ASSESSMENT

- The first component of the report, a Population-Based Health Risk Assessment, estimated the impact of common pollution exposures on health across the lifespan.
- Data was analyzed from several major public data sources, including: the California Department of Public Health Vital Statistics; California Office of Health Care Access and Information(HCAI 2011-2020); SJV Air District; Fresno GIS Hub; and CalEnviroScreen 4.0
- The following health outcomes were analyzed among Fresno residents:
 - Birth outcomes (pre-term birth, infant mortality)
 - Asthma
 - Cardio-cerebral vascular diseases

POPULATION-BASED ASSESSMENT

- The first component of the report, a **Population-Based Health Risk Assessment**, estimated the impact of common pollution exposures on health across the lifespan.
- **Data was analyzed from several major public data sources, including:** the California Department of Public Health Vital Statistics; California Office of Health Care Access and Information(HCAI 2011-2020); SJV Air District; Fresno GIS Hub; and CalEnviroScreen 4.0
- The following health outcomes were analyzed among Fresno residents:
 - Birth outcomes (pre-term birth, infant mortality)
 - Asthma
 - Cardio-cerebral vascular diseases

COMMUNITY HEALTH SURVEY

- The second component of the report, a **Community Health Survey**, had one key goal: to further understand residents' health and experience related to environmental issues in the region.
- The study sample was drawn from a representative sample of **1,766 South Fresno residents**.
- The study was carried out by a Fresno non-profit organization, Valley Forward.



COMMUNITY HEALTH SURVEY

- **The Community Health Survey found that:**
- 1. An overwhelming majority of South Fresno residents have strong concerns about environmental issues, including traffic pollution
- 2. Many are unable to rest because of air pollution and traffic/truck noise
- 3. More than 40% of participants had 1 or more chronic conditions
- 4. Pregnancy outcomes are also common
- 5. Those who reported being unable to rest due to air pollution or traffic/truck noise experienced more adverse health outcomes
- **6. The majority want policy action; more than 84% supported a truck reroute to reduce pollution in their neighborhood**

POLICY RECOMMENDATIONS

- The research findings provide support for the following policy recommendations:
- 1. Truck routes should not be placed within 1000 feet of residential areas; or trucks should be zero-emission.
- 2. More careful considerations are needed for vulnerable populations, such as the South Fresno AB617 community (and particularly communities of color).



FRESNO COMMUNITY ENVIRONMENTAL
HEALTH IMPACT ASSESSMENT

APRIL 2024

COMMUNITY AND
LABOR CENTER

UC MERCED

UNIVERSITY OF CALIFORNIA, MERCED

Thank you.



Next...

City of Fresno Staff

ADDITIONAL OUTREACH

- AB 617 Community Steering Committee (CSC) Meetings
 - Monthly Updates and four Presentation
- Council District Community Meetings
- Community Outreach Meetings

- Flyers
- Cards
- E-Blast
- Pop-ups
- Surveys
- Interviews
- Social Media

Thank You!

Members of the Community

Community Advisory Group

AB 617 Community Steering Committee



QUESTIONS?