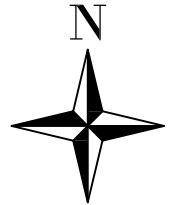


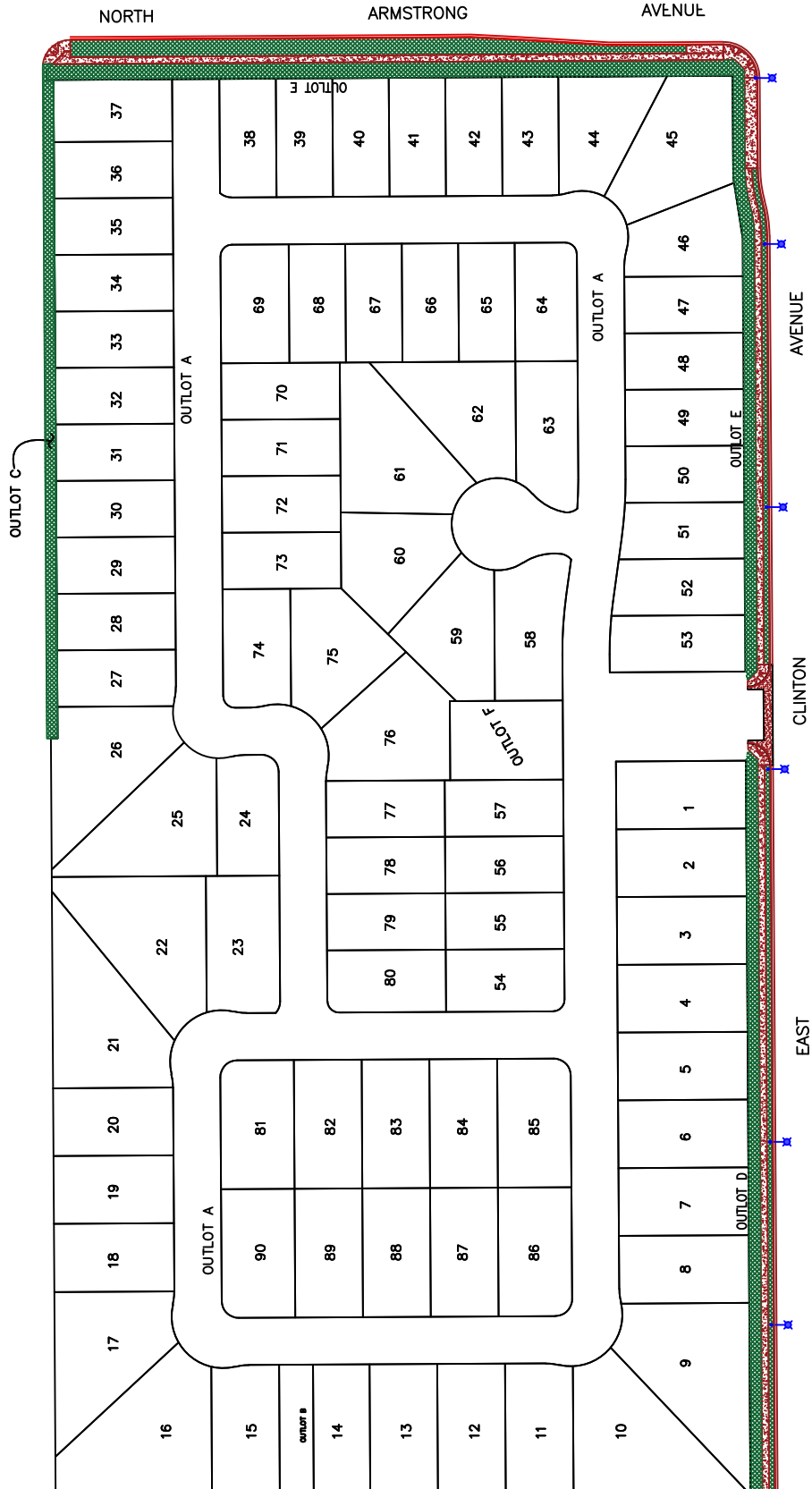


**PUBLIC WORKS DEPARTMENT**  
TRAFFIC OPERATIONS AND PLANNING DIVISION  
FEATURES TO BE ADDED BY ANNEXATION NO. 134  
COMMUNITY FACILITIES DISTRICT NO. 11

FINAL TRACT MAP NO. 6325



NOT TO SCALE  
August 15, 2022



**LANDSCAPE AND IRRIGATION:**  
BUFFERS/PARKWAYS/MEDIAN  
TREES & SHRUBS = 39,441 SF  
SMALL TREES = 88 EA

**CONCRETE IMPROVEMENTS:**  
CURB & GUTTER = 1,851 LF  
VALLEY GUTTER = 731 SF  
CURB RAMPS = 1,137 SF  
SIDEWALK = 11,204 SF

**STREET LIGHTS:**  
TOTAL = 6 EACH

