



CALIFORNIA
High-Speed Rail Authority

FRESNO ACTIVE TRANSPORTATION ADVISORY COMMITTEE UPDATE

March 27, 2024



HSR Update

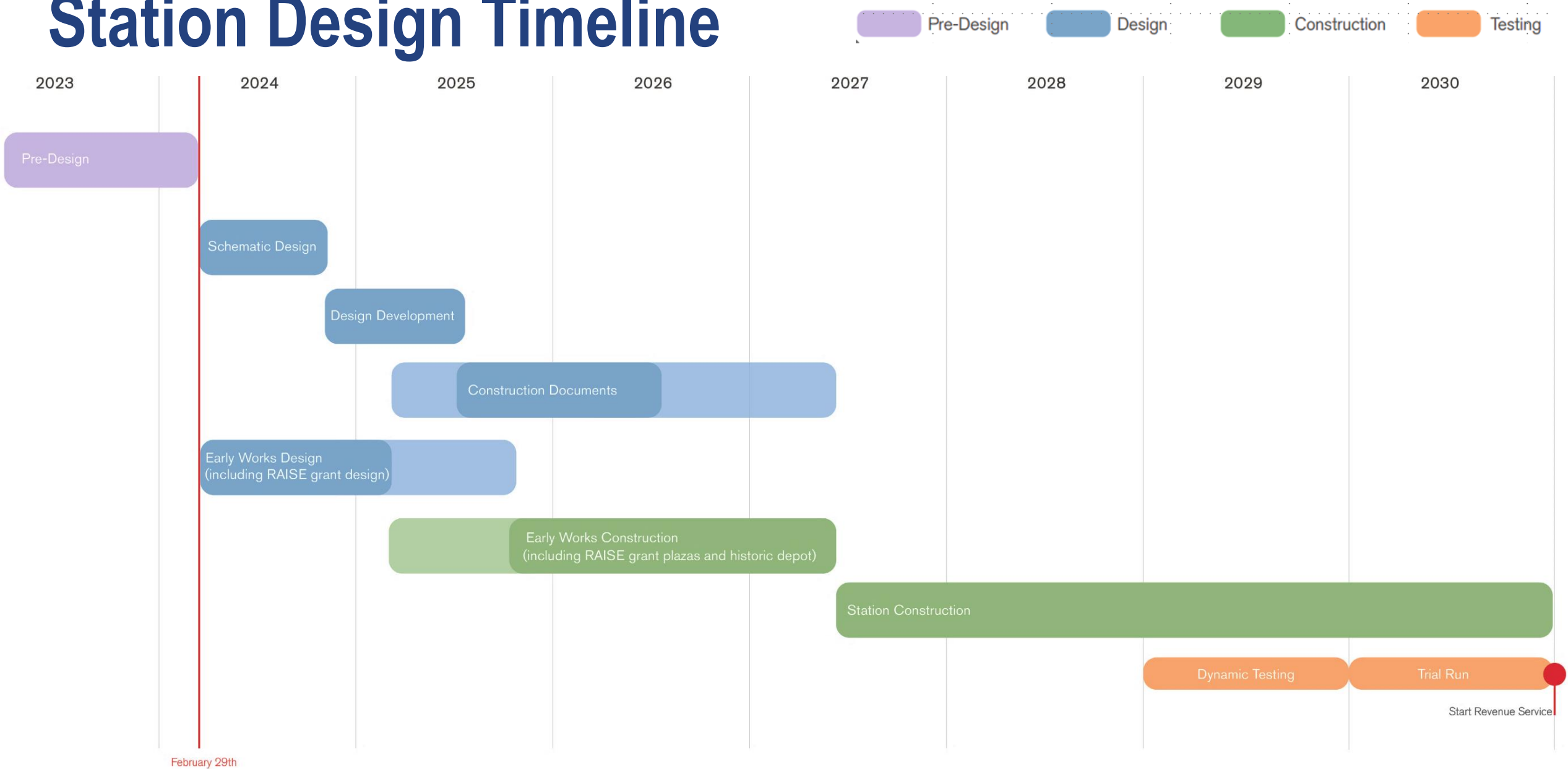


Recent Accomplishments

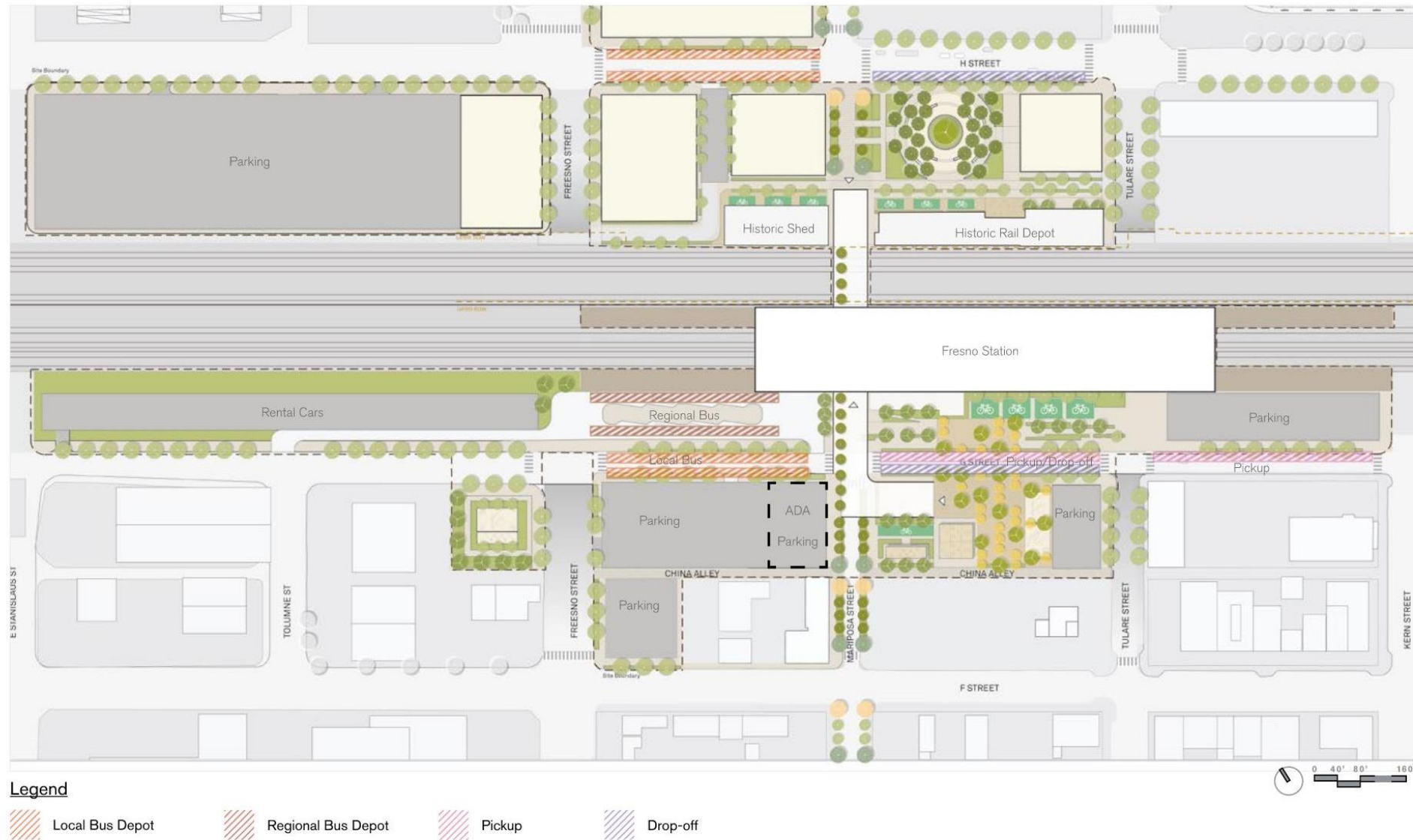
- \$3.1 Billion Federal Fed-State Partnership Grant for High-Speed Rail
 - Includes Fresno Station funding
- \$20 Million Federal RAISE Grant to Begin Early Site Activation
- Design Services for Central Valley Stations
 - Contract Awarded and Notice To Proceed issued in early 2023
 - Draft Station Concepts Presented to Board Feb 2024
 - Late April/ Early May public meetings to be held
- Open House During 2023 Fresno APA California Conference
- CBO Workshops in January 2024
- Potential Suppliers for Electrified High-Speed Trains identified
 - » Alstom Transportation Inc.
 - » Siemens Mobility Inc.
- Construction Package 4 Achieved Substantial Completion in 2023
 - » Southernmost 22-mile stretch of active High Speed-Rail construction in California's Central Valley



Station Design Timeline



Station Site Plan



▼ Platform Level + 6'-0"





Community Based Organization (CBO) Workshops

Workshop Goals:

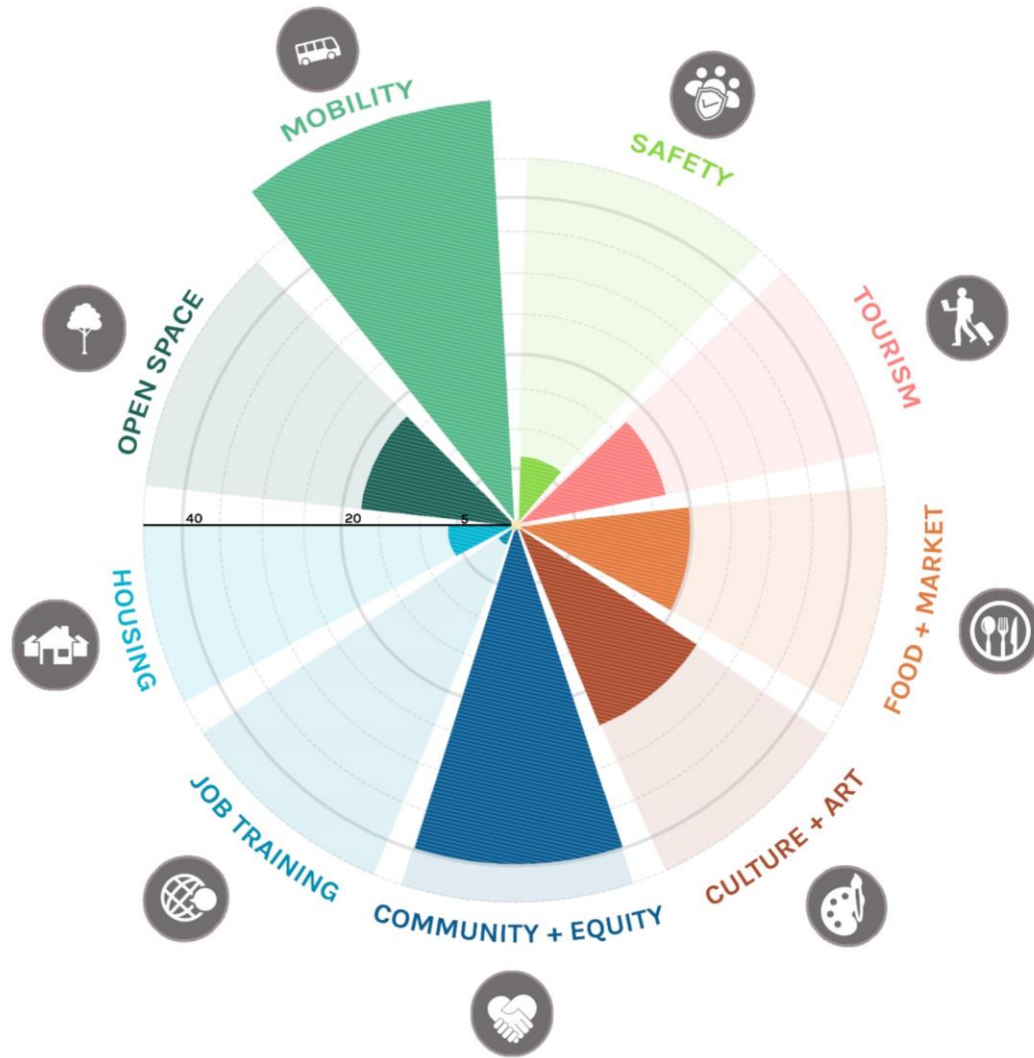
Building community partnerships with a focus on mobility, activation and placemaking in and around the future stations. Explore partnership opportunities for projects and grants.



Next Steps: “Thank You” messaging & HSR Updates sent out, Identifying Emerging Themes, Potential Projects, Grants Opportunities & further outreach follow up. Public Workshops to be held late April / early May



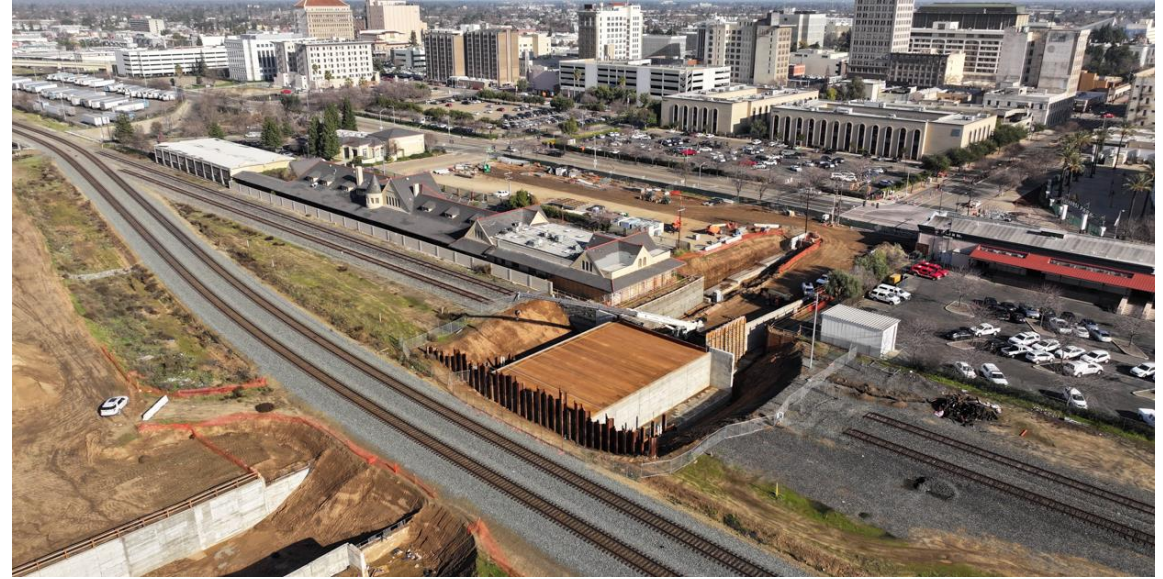
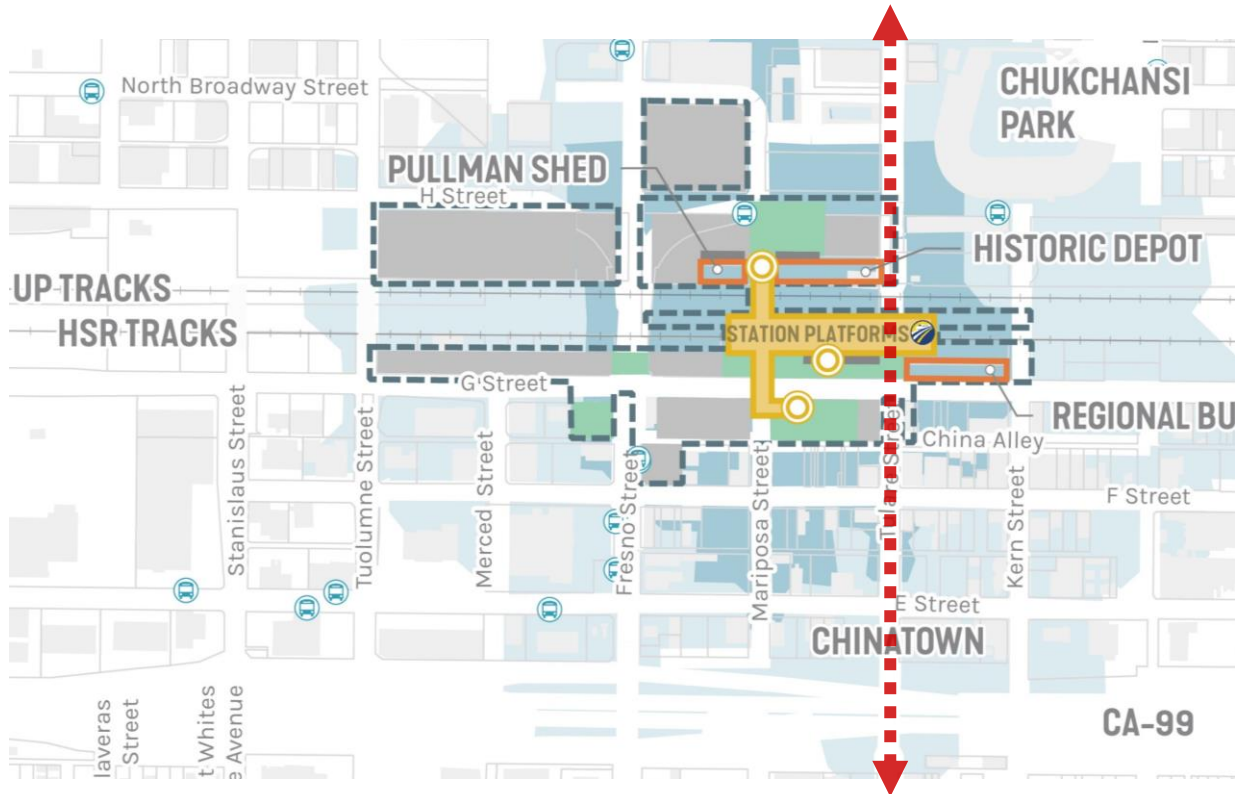
Emerging Themes from CBOs



- » Enhance East-West Corridor of Tulare Street with Activities and Events
- » Leverage Vacant Buildings & Spaces for Art
- » Provide Local Food Spots for Cultural Experience
- » Increase Tree Coverage and Foster Native, Drought-tolerant, and Low-maintenance Landscapes

Tulare Open Grade Separation

- **Current:** Underpass on Tulare Street in downtown Fresno, between G and H Streets next to Chukchansi Park.
- **Short Term:** Enhance east-west corridor of Tulare Street as a walkable and bikeable complete street with activities and events.
- **Long Term:** Establish a multimodal connector to community destinations.





Discussion

