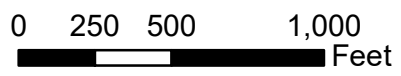
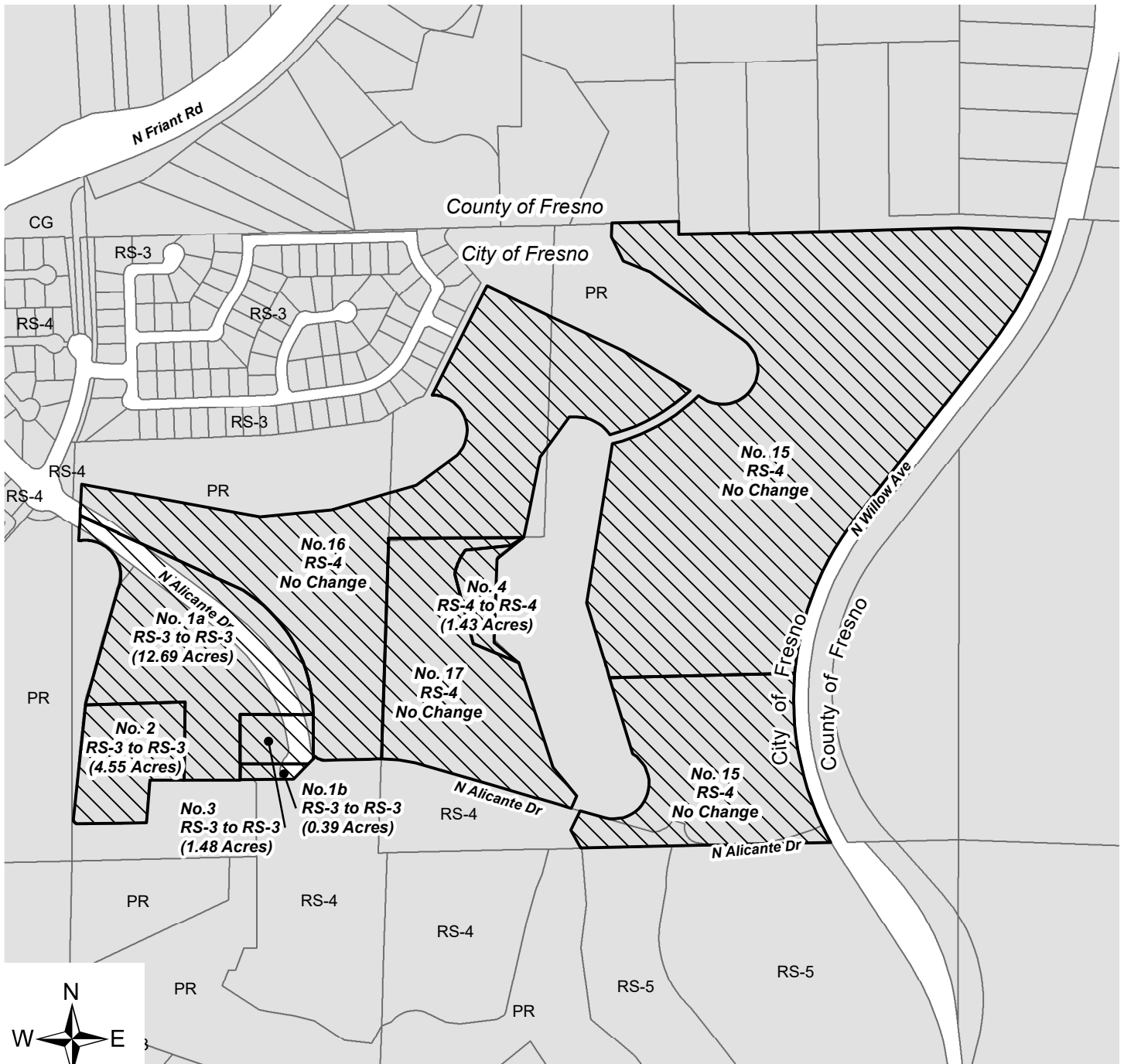



Exhibit B

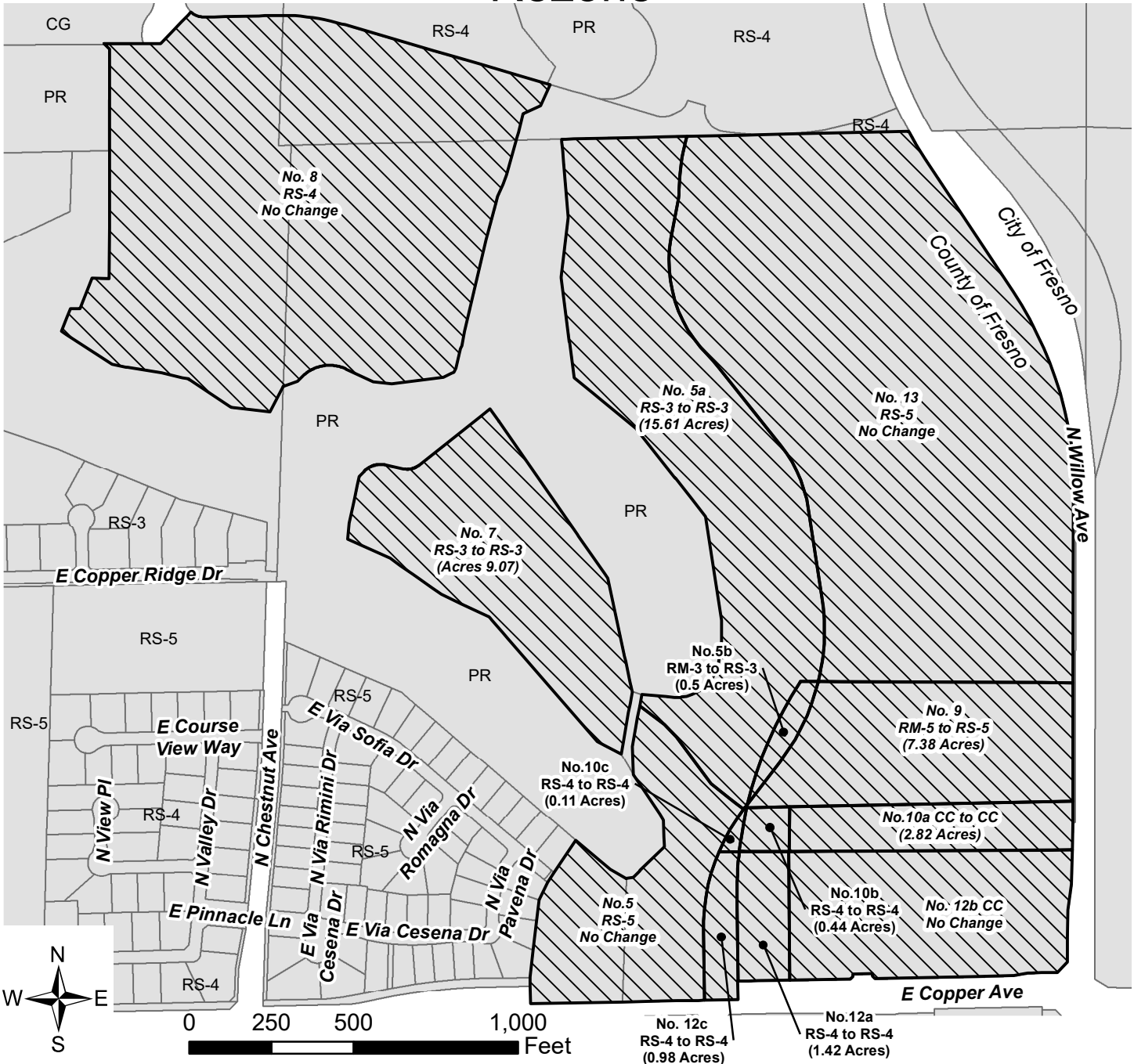
Rezone



P23-02992 Copper River Southwest of E. Silaxon and N. Willow Avenues

-  1a) From RS-3/UGM/cz (Single Family Residential, Low Density/Urban Growth Management/conditions of zoning) zone district to RS-3/UGM/cz (Single Family Residential, Low Density/Urban Growth Management/conditions of zoning) zone district.
- 1b) From RS-3/UGM/cz (Single Family Residential, Low Density/Urban Growth Management/conditions of zoning) zone district to RS-3/UGM/cz (Single Family Residential, Low Density/Urban Growth Management/conditions of zoning) zone district.
- 2) From RS-3/UGM/cz (Single Family Residential, Low Density/Urban Growth Management/conditions of zoning) zone district to RS-3/UGM/cz (Single Family Residential, Low Density /Urban Growth Management/conditions of zoning) zone district.
- 3) From RS-3/UGM/cz (Single Family Residential, Low Density/Urban Growth Management/conditions of zoning) zone district to RS-3/UGM/cz (Single Family Residential, Low Density/Urban Growth Management/conditions of zoning) zone district.
- 4) From RS-4(Single Family Residential, Medium Low Density/Urban Growth Management/ conditions of zoning) zone district to RS-4/UGM/cz(Single Family Residential, Medium Low Density/Urban Growth Management/ conditions of zoning) zone district.

Rezone

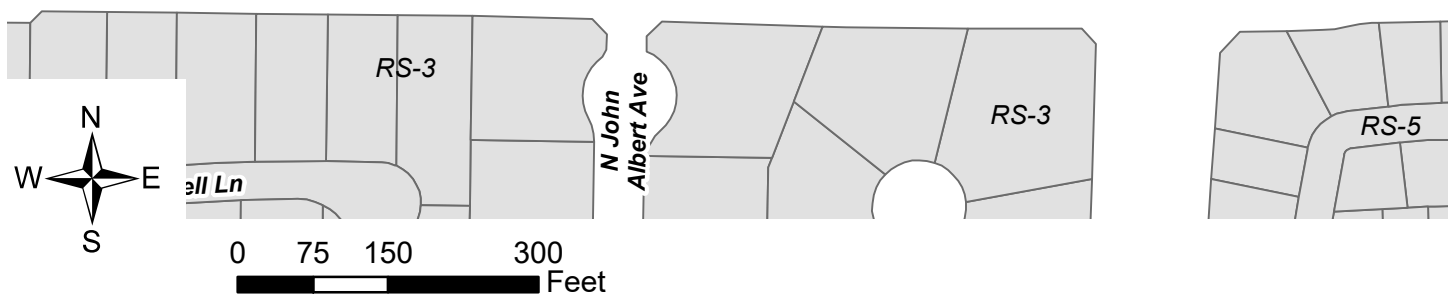
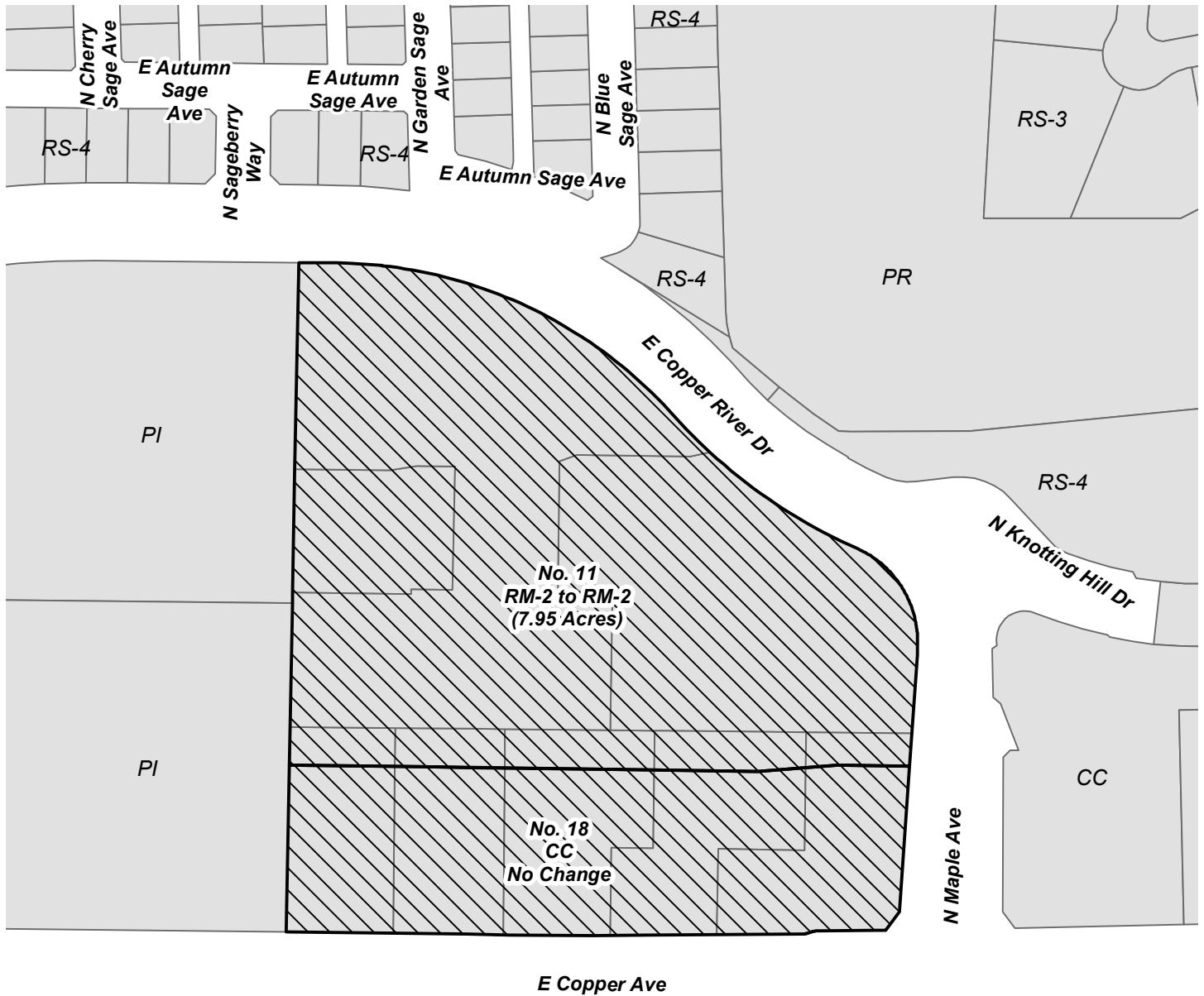


P23-02992 Copper River Northwest of E. Copper and N. Willow Avenues




- 5a) From the RS-3/UGM/cz (Single Family Residential, Low Density/Urban Growth Management/conditions of zoning) zone district to RS-3/UGM/cz (Single Family Residential, Low Density/Urban Growth Management/conditions of zoning) zone district.
- 5b) From the RS-3/UGM/cz (Single Family Residential, Low Density/Urban Growth Management/conditions of zoning) zone district to RS-3/UGM/cz (Single Family Residential, Low Density/Urban Growth Management/conditions of zoning) zone district.
- 7) From the RS-3/UGM/cz (Single Family Residential, Low Density/Urban Growth Management/conditions of zoning) zone district to RS-3/UGM/cz (Single Family Residential, Low Density/Urban Growth Management/conditions of zoning) zone district.
- 9) From the RS-5/UGM/cz (Single Family Residential, Medium High Density/Urban Growth Management/conditions of zoning) zone district to RS-5/UGM/cz (Single Family Residential, Medium Density/Urban Growth Management/conditions of zoning) zone district.
- 10a) From the CC/UGM/cz (Community Commercial/Urban Growth Management/conditions of zoning) zone district to CC/UGM/cz (Community Commercial/Urban Growth Management/conditions of zoning) zone district.
- 10b) From the RS-4/UGM/cz (Single Family Residential, Medium Low Density/Urban Growth Management/conditions of zoning) zone district to the RS-4/UGM/cz (Single Family Residential, Medium Low Density/Urban Growth Management/conditions of zoning) zone district.
- 10c) From the RS-4/UGM/cz (Single Family Residential, Medium Low Density/Urban Growth Management/conditions of zoning) zone district to the RS-4/UGM/cz (Single Family Residential, Medium Low Density/Urban Growth Management/conditions of zoning) zone district.
- 12a) From the RS-4/UGM/cz (Single Family Residential, Medium Low Density/Urban Growth Management/conditions of zoning) zone district to RS-4/UGM/cz (Single Family Residential, Medium Low Density /Urban Growth Management/conditions of zoning) zone district.
- 12c) From the RS-4/UGM/cz (Single Family Residential, Medium Low Density/Urban Growth Management/conditions of zoning) zone district to RS-4/UGM/cz (Single Family Residential, Medium Low Density /Urban Growth Management/conditions of zoning) zone district.

Rezone



P23-00992 Copper River Northwest of E. Copper and N. Maple Avenues


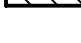

-  11) From RM-2/UGM/cz (Multi-Family Residential, Urban Neighborhood/Urban Growth Management/conditions of zoning) zone district to RM-2/UGM/cz (Multi-Family Residential, Urban Neighborhood/Urban Growth Management/conditions of zoning) zone district.

Rezone



P23-02992 Copper River

Properties along E. Copper River Drive between E. Friant and N. Allcante Drives

-  19) From RM-2/UGM/cz (Multi-Family Residential, Urban Neighborhood/Urban Growth Management/conditions of zoning) zone district to RM-2/UGM/cz (Multi-Family Residential, Urban Neighborhood/Urban Growth Management/conditions of zoning) zone district.
-  20) From RM-2/UGM/cz (Multi-Family Residential, Urban Neighborhood/Urban Growth Management/conditions of zoning) zone district to RM-2/UGM/cz (Multi-Family Residential, Urban Neighborhood/Urban Growth Management/conditions of zoning) zone district.
-  City Limits