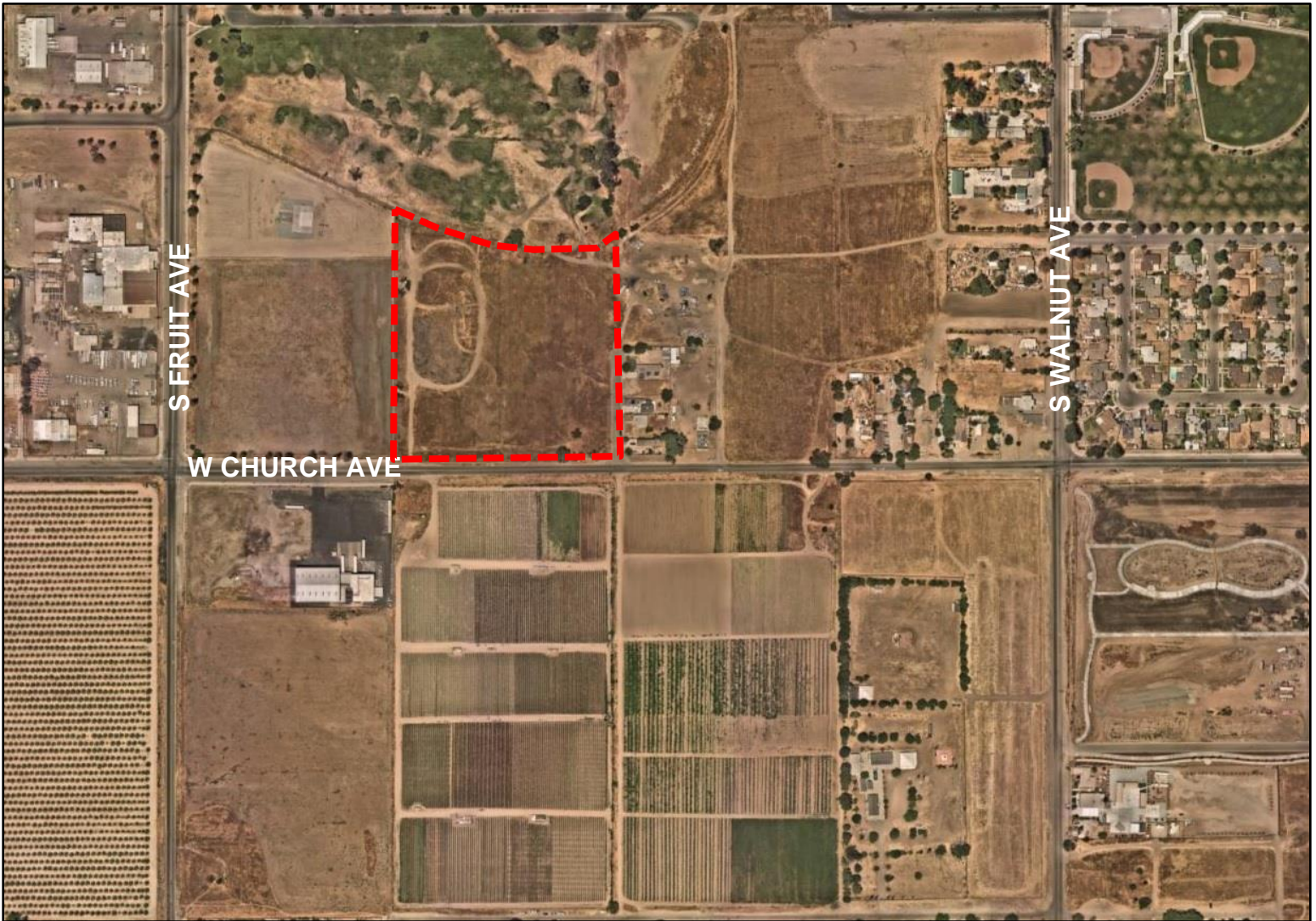


Exhibit C

AERIAL MAP



PLANNING AND DEVELOPMENT DEPARTMENT

Applications

Tentative Tract Map No. 6411

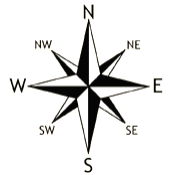
Zone District

RS-5 (*Single-Family Residential, Medium Density*)

LEGEND



T-6411
±7.95 acres



Location:

Northwest corner of West Church
and South Thorne Avenues
(APNs: 477-060-05 & 477-060-06)

Land Use Designation

Medium Density Residential