

HIGHEST-NEEDS NEIGHBORHOODS DEFINITION UPDATE

PRAC, APRIL 15, 2024



Agenda

1. Overview of Current Highest-Needs Neighborhoods - Definition
2. Highest-Needs Neighborhoods – Existing Conditions
3. Recommendations and Discussion



OVERVIEW OF CURRENT HIGHEST-NEEDS NEIGHBORHOODS DEFINITION

Defining Highest-Needs Neighborhoods

Measure P Ordinance Requirements

Sec. 7-1508 (e) Identification of Highest-needs neighborhoods

(2) No later than **January 1, 2022**, the City, in conjunction with the Commission, shall adopt a new definition of highest-needs neighborhoods, after conducting a public process, to be updated every three years and included in subsequent updates to the Plan. The City and Commission shall create **a weighted index** incorporating the following data in developing the definition:

- (A) Existing conditions of parks and facilities based on needs assessment data in the Plan;**
- (B) The proportion of the population that lives within walking distance (1/2 mile) to a park;**
- (C) Park acreage per 1,000 residents;**
- (D) Population density;**
- (E) Neighborhood youth and senior population;**
- (F) Neighborhood safety;**
- (G) Neighborhoods of concentrated poverty;**
- (H) Pollution burden, as defined by CalEnviroScreens 3.0, or subsequent updates;**
- (I) Pre-term birth rates;**
- (J) Years of potential life lost;**
- (K) Neighborhood composite mortality rate.**

HIGHEST-NEEDS NEIGHBORHOODS DEFINITION

Equity Factor
Weighting

Highest Needs
Percentile

Weighted Equity Factor Scoring

The following factors shall be weighted **higher than** average (2x average):

- (A) Existing conditions of parks and facilities based on needs assessment data in the Plan;
- (C) Park acreage per 1,000 residents;
- (E) Neighborhood youth and senior population;
- (G) Neighborhoods of concentrated poverty;
- (H) Pollution burden, as defined by CalEnviroScreen 3.0, or subsequent updates;
- (J) Years of potential life lost;

The following factors shall be weighted **equal to** average:

- (B) The proportion of the population that lives within walking distance (1/2 mile) to a park;
- (D) Population density;
- (F) Neighborhood safety;
- (K) Neighborhood composite mortality rate;

The following factors shall be weighted **less than average** (½ of average):

- (I) Pre-term birth rates;

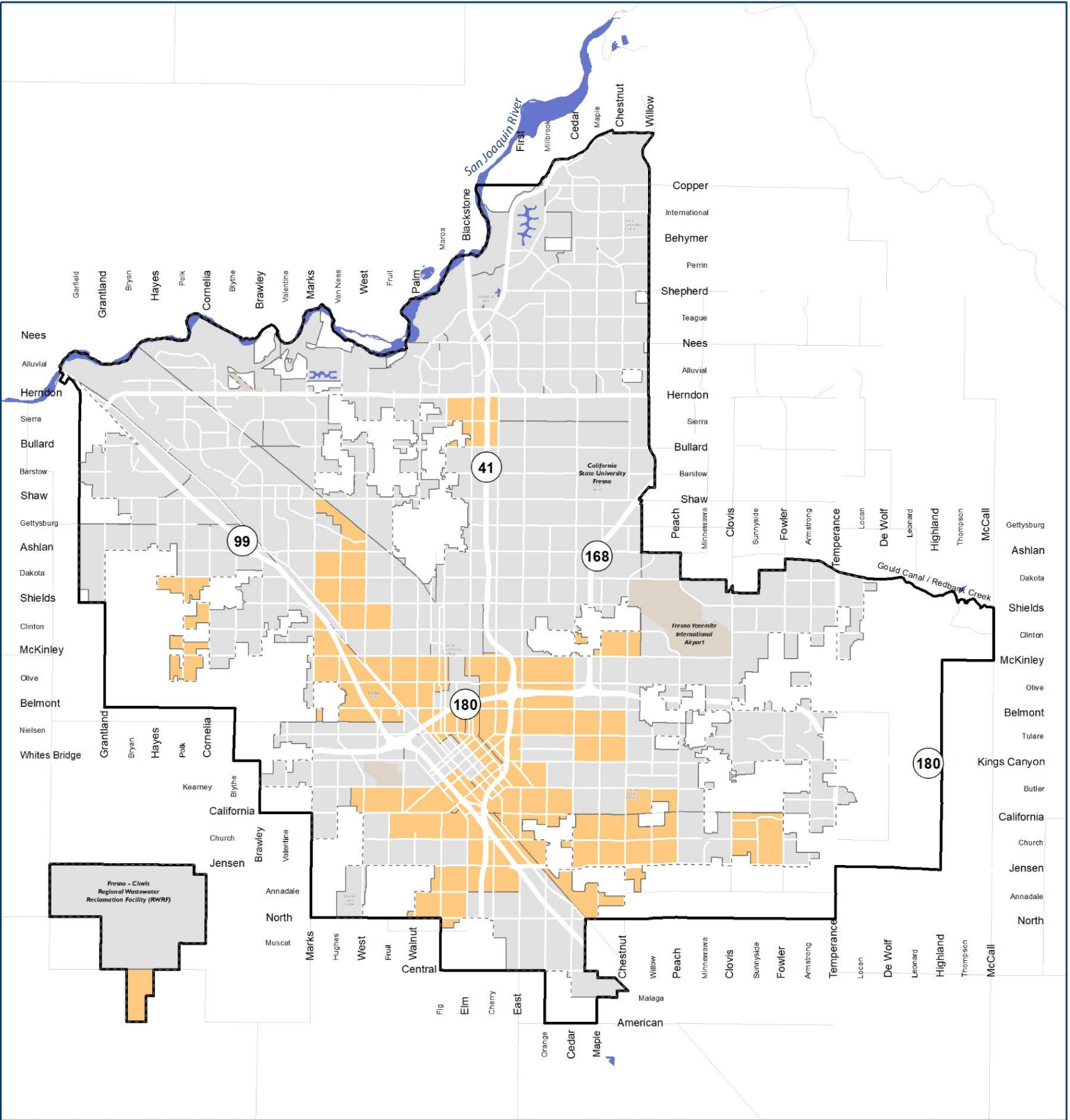
Percentile Threshold: Top 33% of Fresno census tracts make up the Highest-Needs Neighborhoods

Legend



Sources: Fresno County, City of Fresno, ESRI 2021, Fresno PMP, Fresno Police Department, CalEnviroScreen 3.0, Fresno Health Priority Index

Note: Data only shown for census tract area within Fresno City Limits.



WEIGHTED EQUITY FACTORS: TOP 33% Fresno, CA

Highest Needs Parks

1. Roeding Park
2. Romain Park
3. Ninth and Tulare
4. First and Nevada
5. Holmes Park
6. Dickey Park
7. Dickey Youth Center
8. Eaton Plaza
9. Sunset Park
10. Neilson Park
11. Kearney Park
12. Frank H Ball Park
13. California/Tupman
14. Maxie L Parks
15. Bigby-Villa Park
16. Hinton Park
17. Mary Ella Brown
18. Almy Park
19. Maple and Huntington
20. Maple and Mckinley
21. The Link
22. Veterans Memorial Auditorium
23. Meux Home
24. Basin XX
25. Fresno Barrios



A background image of a grassy field with trees and children playing. A large white number '2' is overlaid on the left side. A white rectangular box containing text is positioned in the center-right.

2

HIGHEST NEEDS NEIGHBORHOODS EXISTING CONDITIONS 2022 - 2024

Highest Needs Neighborhoods

Improvements that may change park condition rating per Parks Master Plan

- **Play area renovation**
- **Field renovation**
- **New use**
- **New restroom**
- **New pathways and circulation**
- **New furniture**
- **Building renovation**

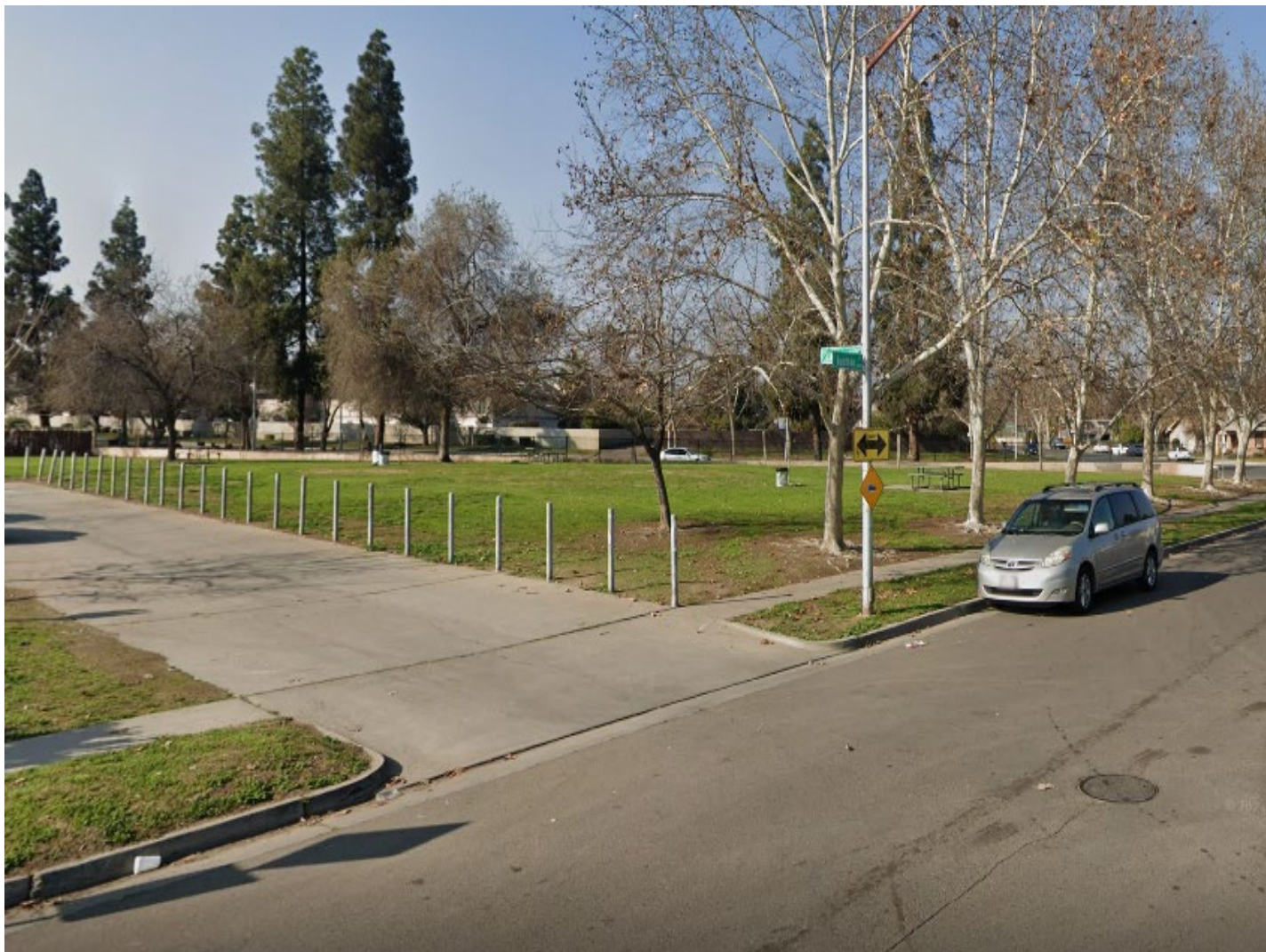
Other operational improvements

- **Daily custodial service**
- **Programming**
- **Design and planning**
- **Building maintenance/code upgrades**
- **Parking lot improvements**
- **Lighting upgrades**
- **Landscape maintenance**

HNN Park Improvement Examples

Park	2018 Park Condition	Capital Projects since 2022	Operational Improvements since 2022
California/Tupman	Fair	New Tot Lot New Accessible Picnic Area Perimeter Wall	Daily Service
Hinton Park	Poor	New Field Lights New Restroom Futsal court conversion Parking lot slurry, seal, and striping Planning- Landscape Improvements LED lighting upgrades	
Holmes Park	Fair	Roof work along south facade of community center Parking lot slurry, seal, and striping Tree trimming/maintenance LED lighting upgrades Restroom replacements	After school programming Daily custodial services – restrooms and community center Daily security services – lock up Daily litter control Camps, Activities, Events, Workshops, Clinics, Classes and Drop In Recreation

HNN Park Improvement Example



Cal Tupman Park Before



Cal Tupman Park After

HNN Park Improvement Examples

Park	2018 Park Condition	Capital Projects since 2022	Operational Improvements since 2022
Maxie L Parks	Fair	Estimating- South Parcel Improvements LED lighting upgrades Energy efficient hot water heater upgrades West Fresno Rehabilitation Project Outreach Play Area Improvements HVAC Installation	Early childhood programming After school program Camps, Activities, Events, Workshops, Clinics, Classes and Drop In Recreation
Romain Park	Poor	New south parking lot built with ADA parking and path of travel HVAC replacement and repair North Parking lot slurry, seal, and striping Tree trimming/maintenance LED lighting upgrades Play Area Improvements- Design Phase Learner Pool Improvements- Estimating Phase	After school programming Daily custodial services – restrooms and community center Daily security services – lock up Daily litter control Swim lessons Recreational swim Camps, Activities, Events, Workshops, Clinics, Classes and Drop In Recreation

HNN Park Improvement Example



Hinton Restroom Before



Hinton Restroom After

HNN Park Improvement Example



Dickey Playground Before



Dickey Playground After

3

PRAC RECOMMENDATIONS

RECOMMENDATION AND DISCUSSION

PRAC Motion

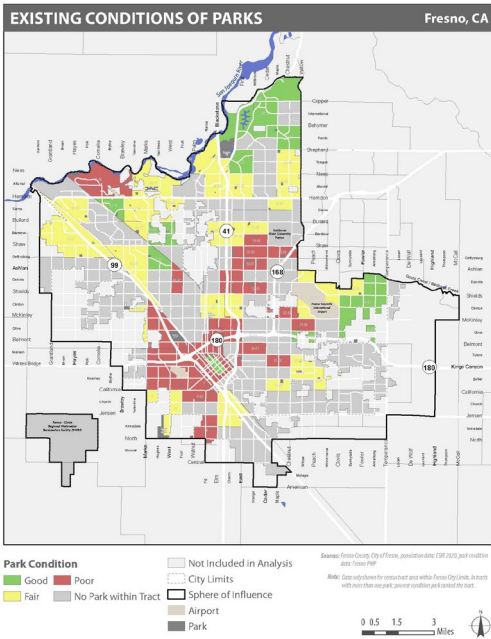
4

APPENDIX

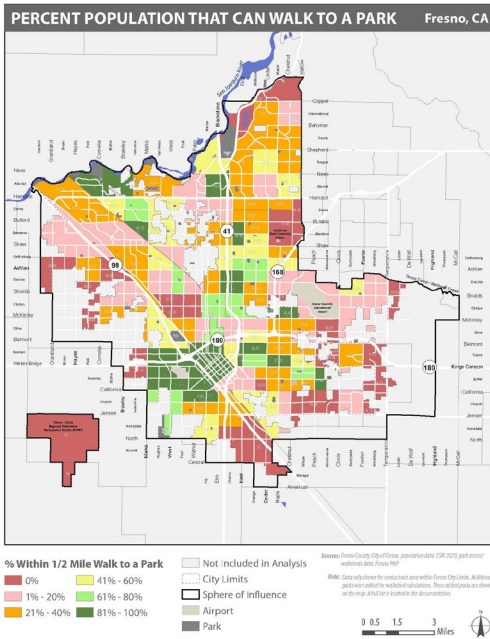


Defining Highest-Need Neighborhoods

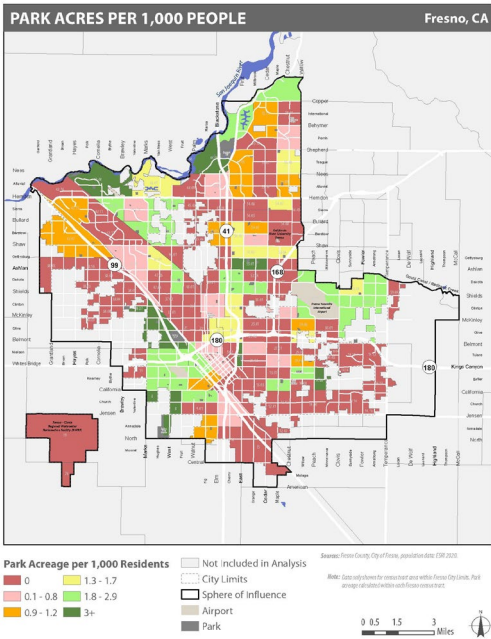
Equity Factors



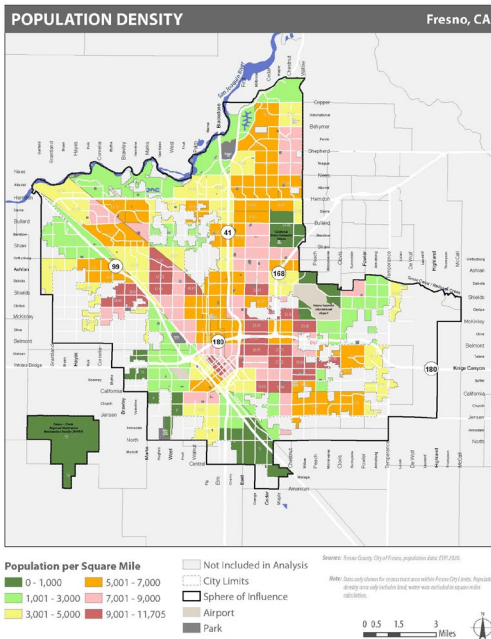
(A)



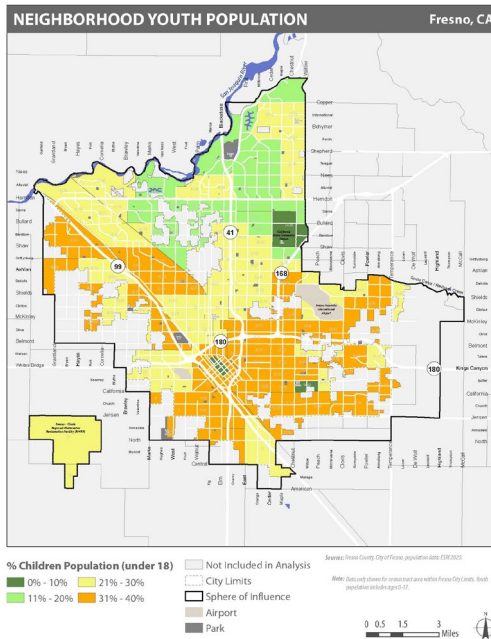
(B)



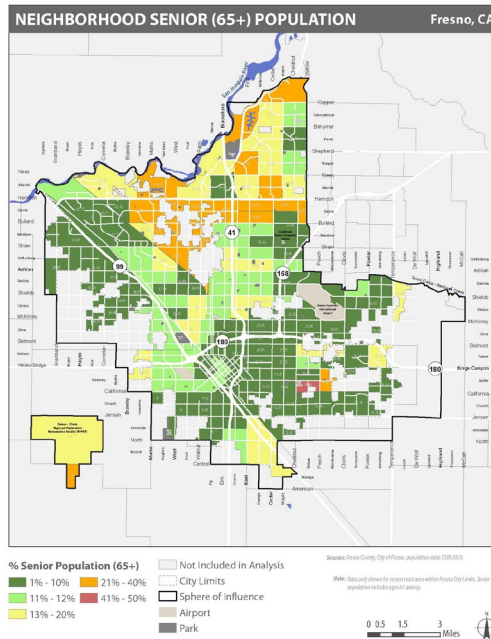
(C)



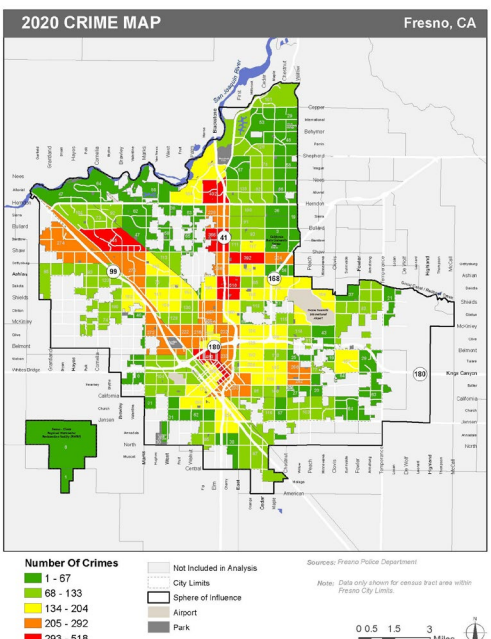
(D)



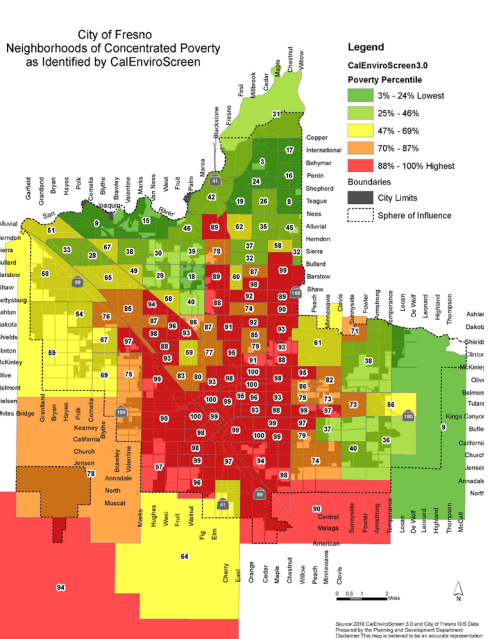
(E)



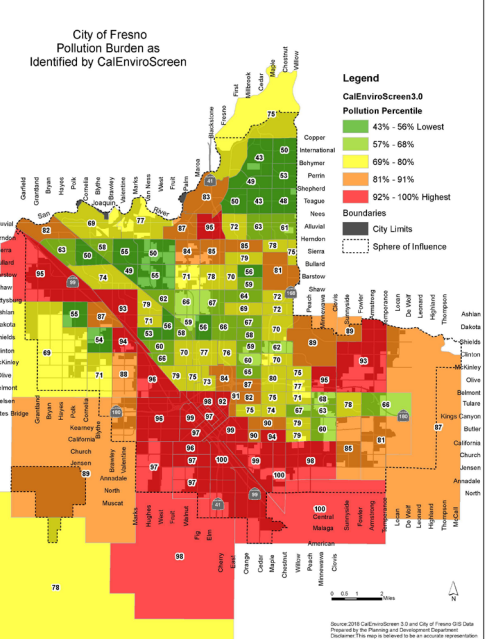
(F)



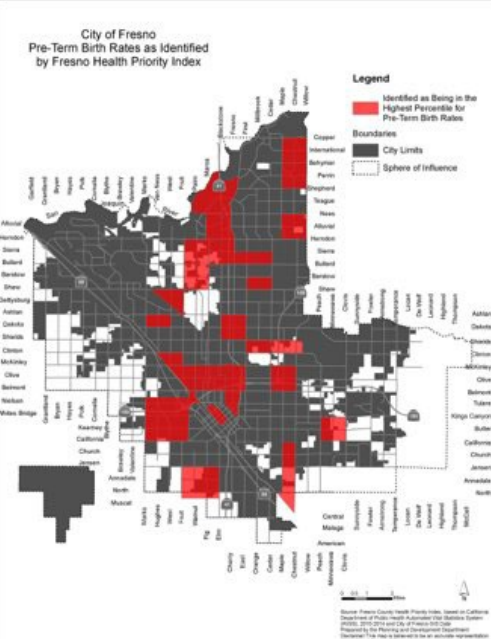
(G)



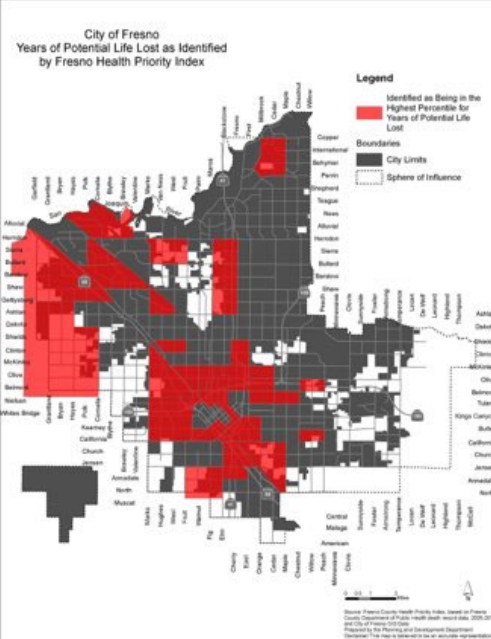
(H)



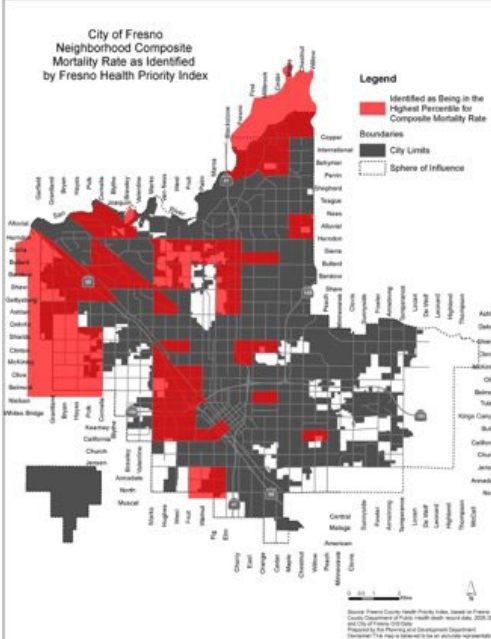
(I)



(J)



(K)



(L)

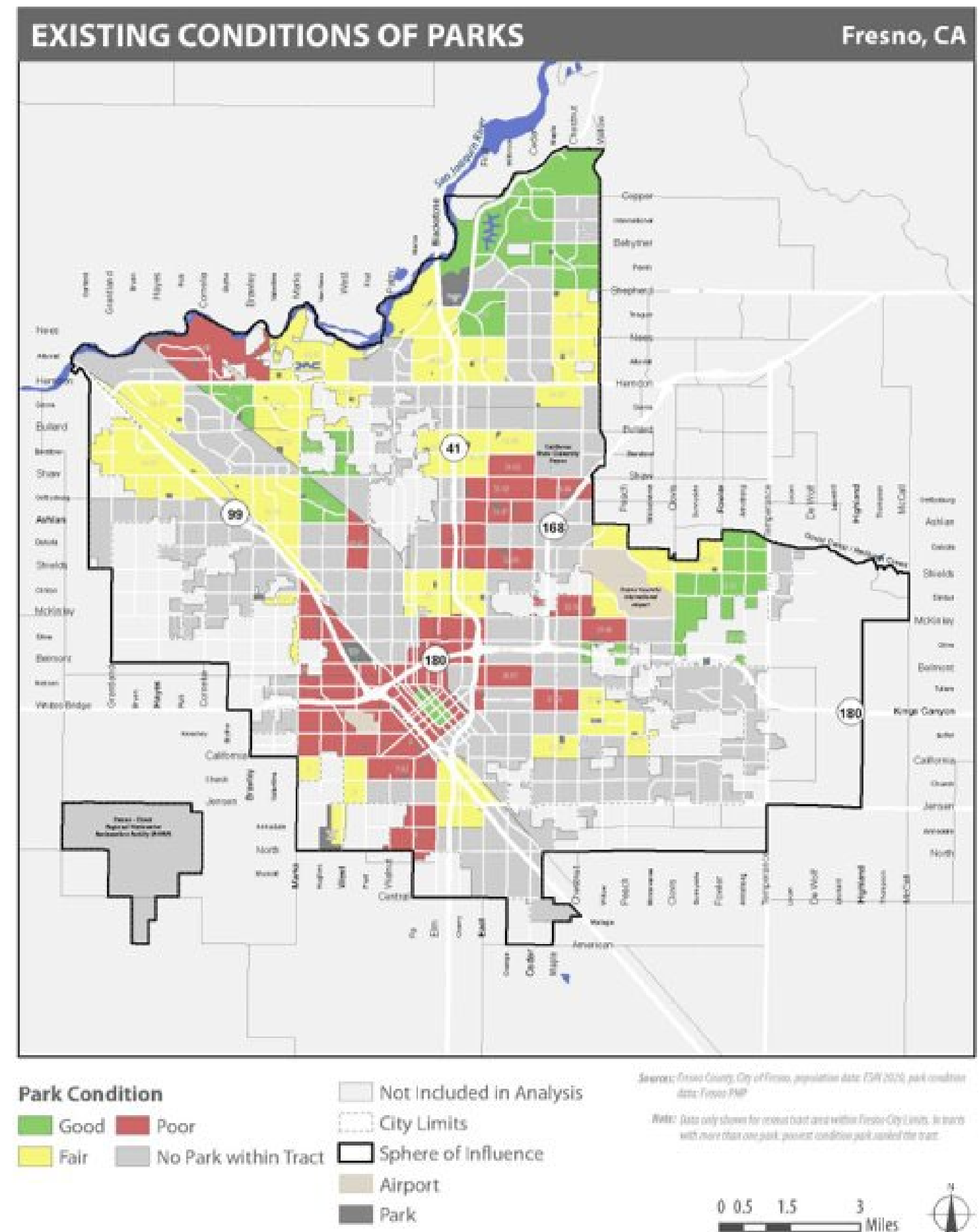
Equity Factors

(A) Existing Conditions of Parks and Facilities based on needs assessment data in the Master Plan

- Parks in Fresno are not all in the same condition.
- The red areas on this map highlight areas where parks exist, but are in poor condition.

SOURCE:
Fresno Parks Master Plan

DEFINITION:
Census Tracts containing parks identified as being in "Poor" condition



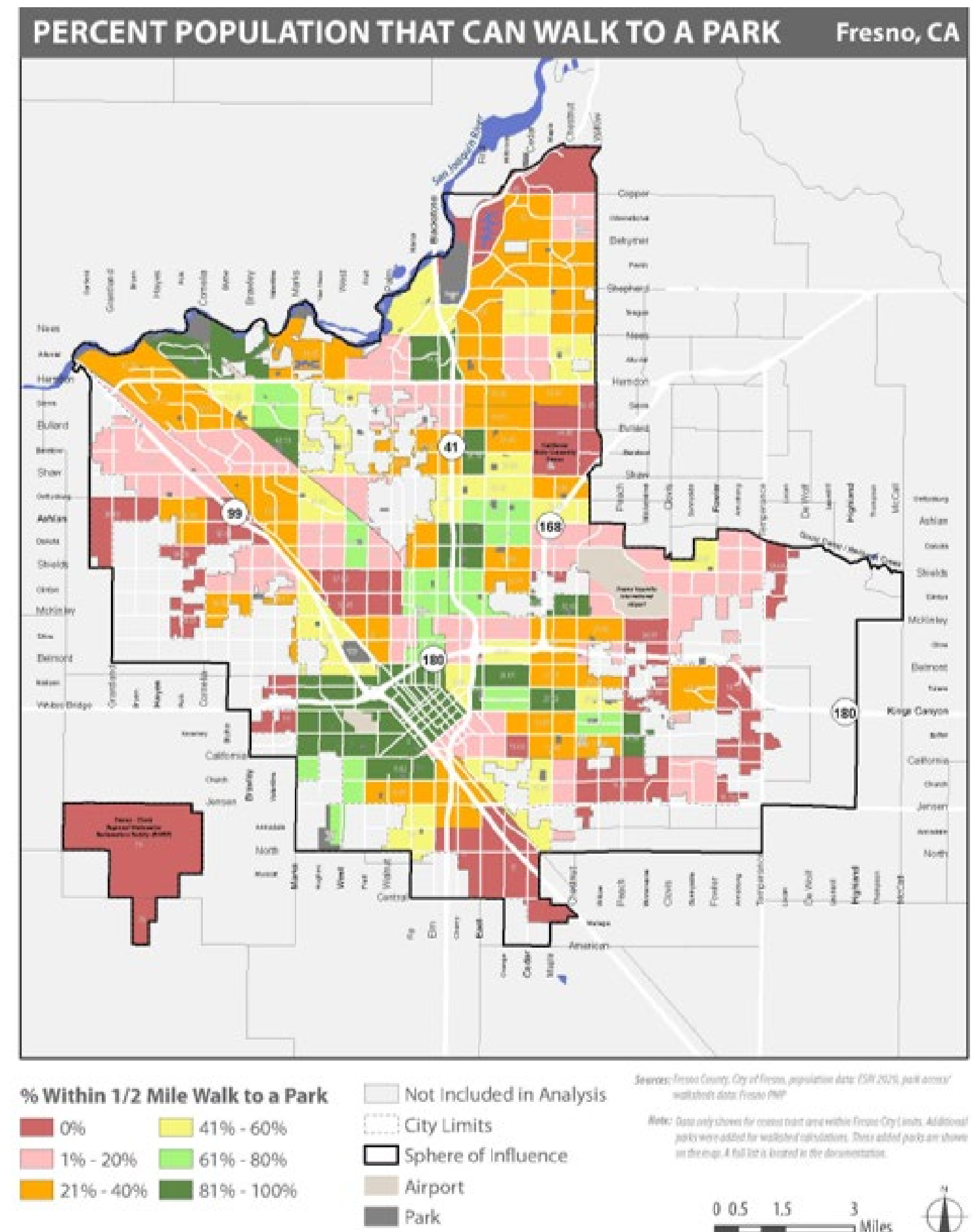
Equity Factors

(B) The Proportion of the Population That Lives within Walking Distance (1/2 Mile) to a Park

- Not all Fresno community members have easy access to nearby parks.
- Red on this map highlights areas where no one is within a 1/2-mile walk to a park.
- In pink and orange areas, most people are not within a 1/2-mile walk to a park.

SOURCE:
Fresno Parks Master Plan

DEFINITION:
Census Tracts where 20% or fewer people live within 1/2 mile walking distance of a park



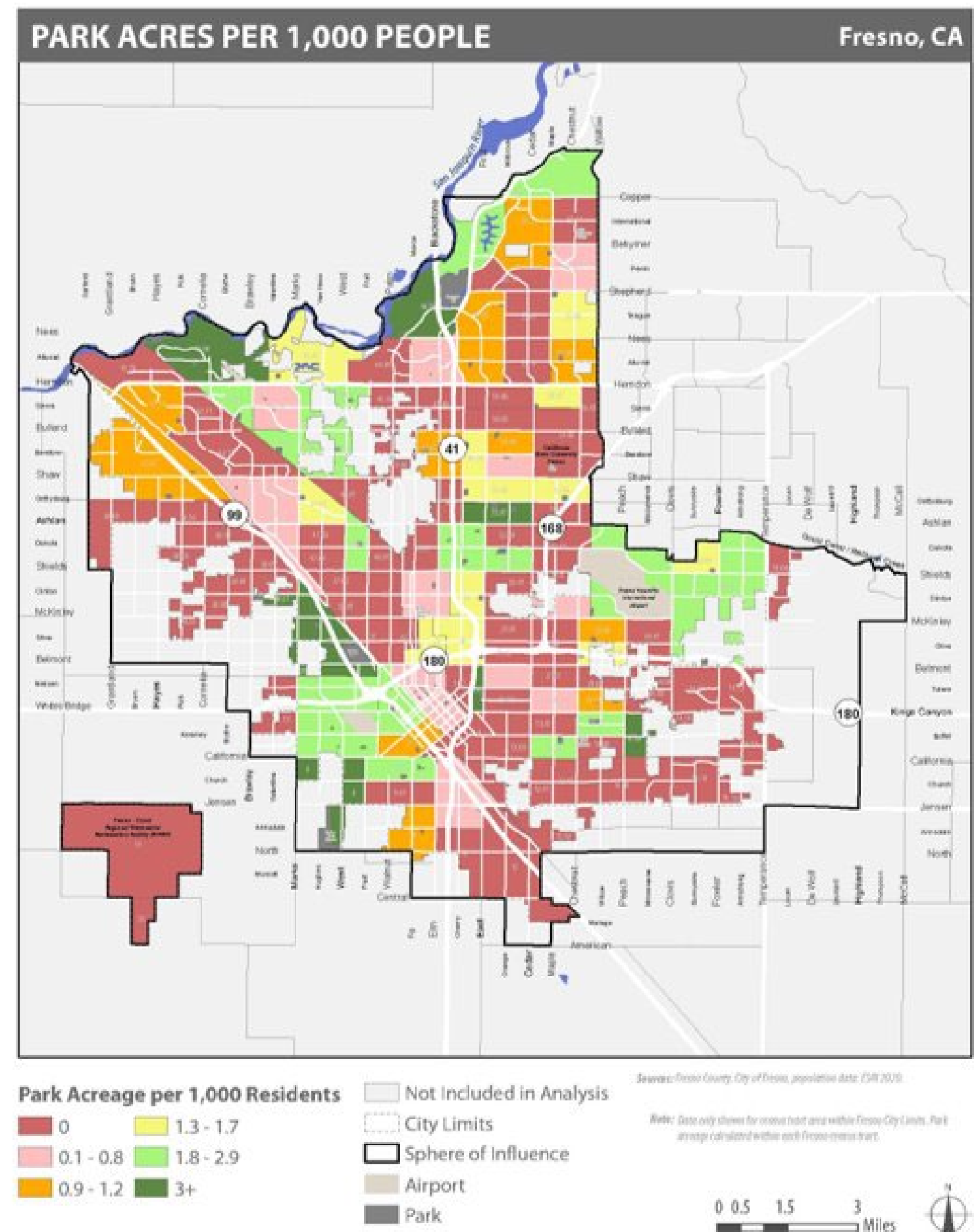
Equity Factors

(C) Park Acreage per 1,000 Residents

- Parks in Fresno are not evenly distributed throughout the city.
- The red on this map shows areas where there are no parks at all.
- Dark green areas are the only parts of Fresno with over 3 acres of park land per 1,000 residents.

SOURCE:
Fresno Parks Master Plan

DEFINITION:
Census Tracts where the ratio of park acreage to 1,000 residents is **less than 0.8**.



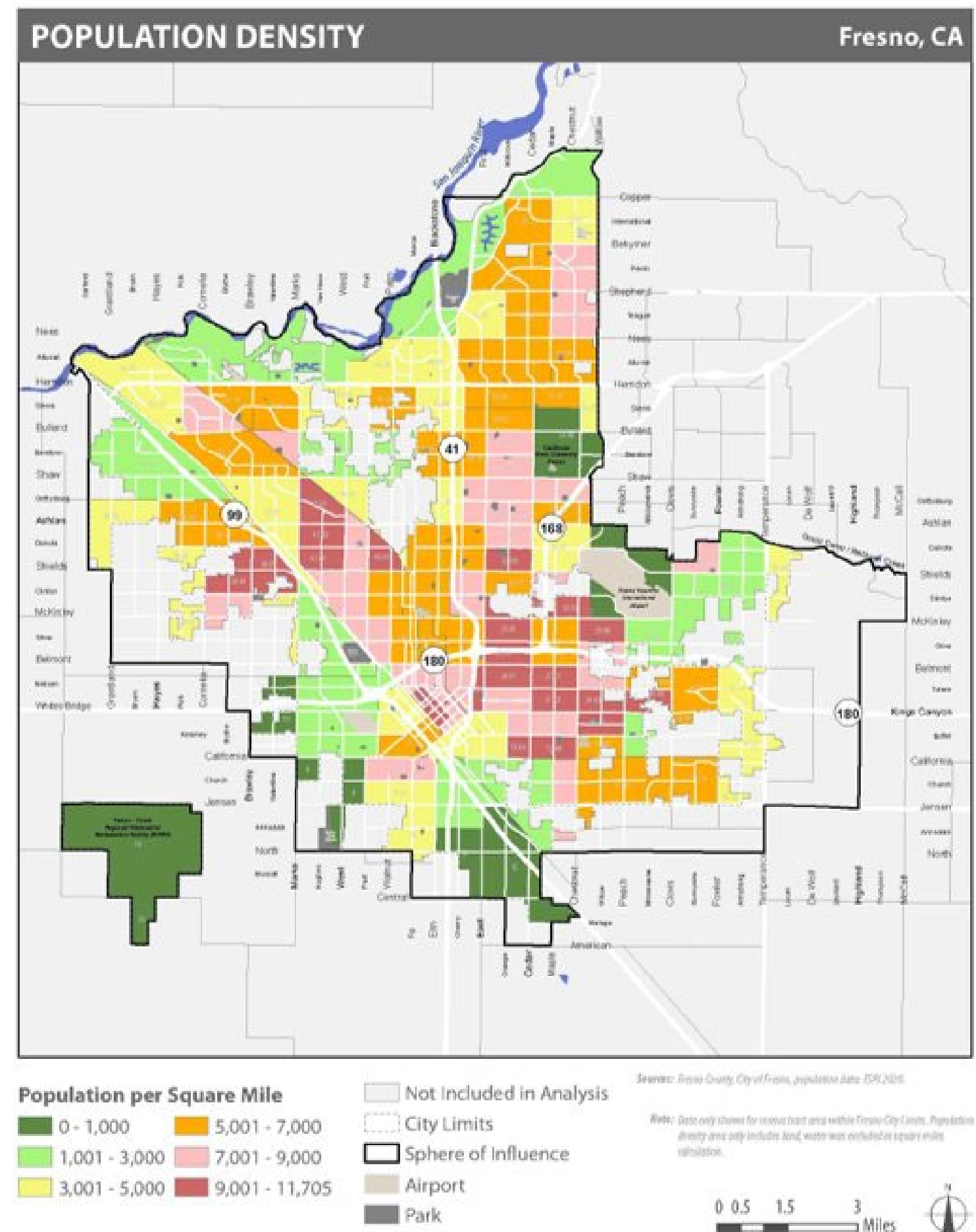
Equity Factors

(D) Population Density

- Denser residential areas of a city often have less access to private outdoor space. Public park access is even more critical here.
- The red and pink on this map shows where more people live.

SOURCE:
US Census Bureau, 2020

DEFINITION:
Census Tracts where the population density is **greater than 7000 residents per square mile**.



Equity Factors

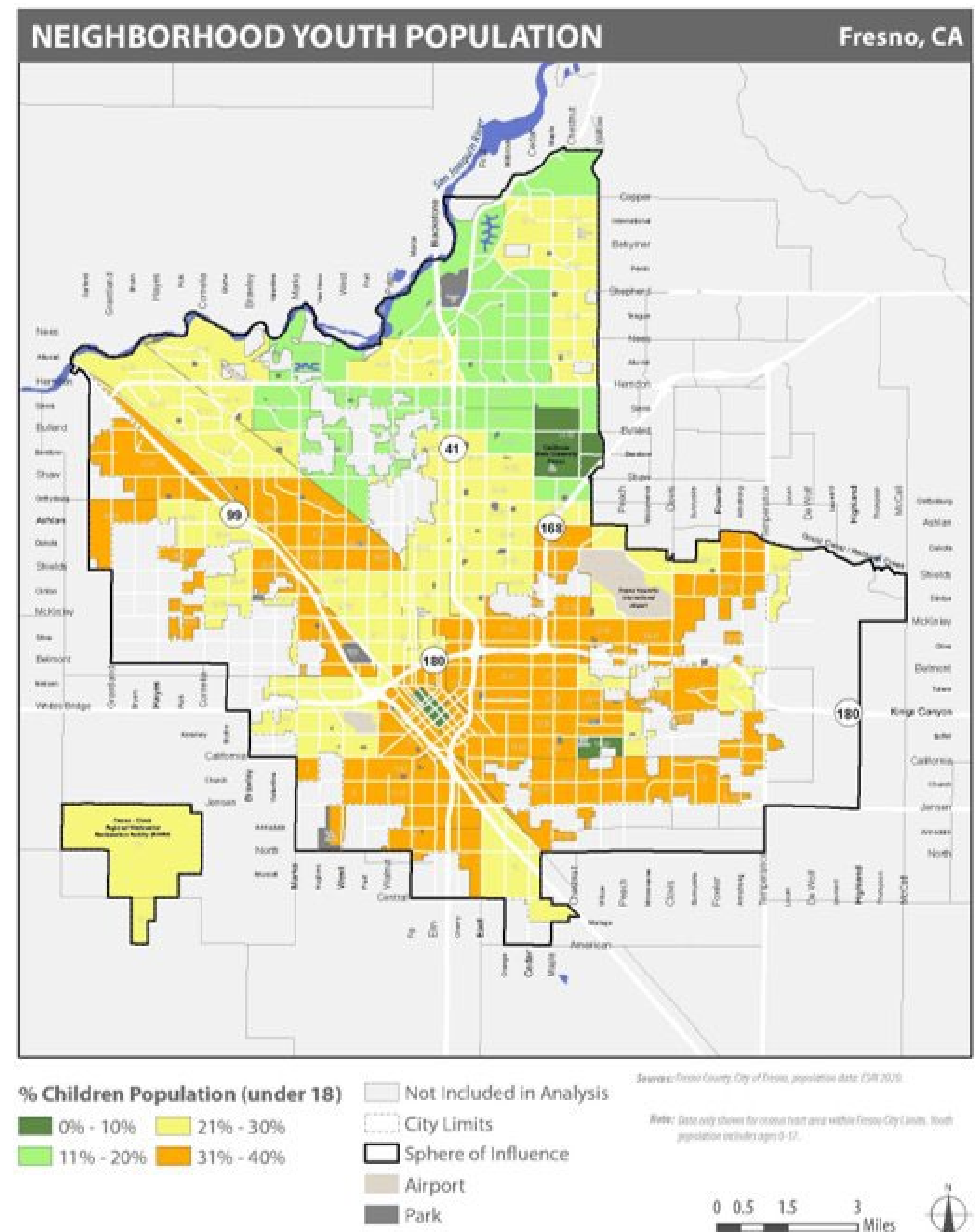
(E) Neighborhood Youth and Senior Population

- YOUTH

- Access to green space is important to the mental well-being, overall health and cognitive development of children.
- Orange areas on this map shows where there are more children under 18.

SOURCE:
US Census Bureau, 2020

DEFINITION:
Census Tracts where the percent of the population of residents under 18 years of age is **greater than 30%**.



Equity Factors

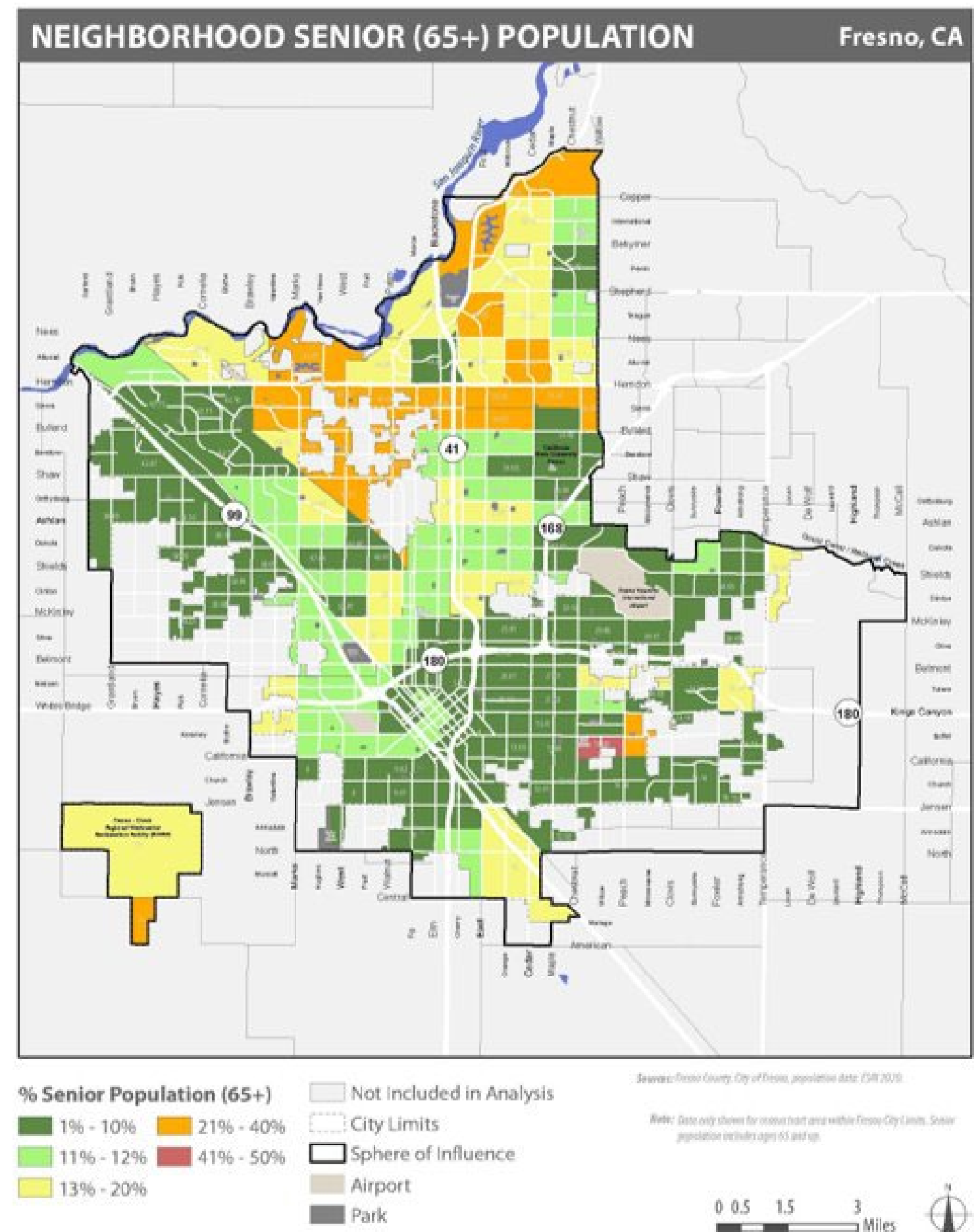
(E) Neighborhood Youth and Senior Population

- SENIORS

- Access to green space is important to the mental well-being and overall health for seniors as they age in place.
- Orange and red areas on this map shows where there are more adults age 65 or older.

SOURCE:
US Census Bureau, 2020

DEFINITION:
Census Tracts where the percent of the population of residents over 65 years of age is **greater than 20%**.



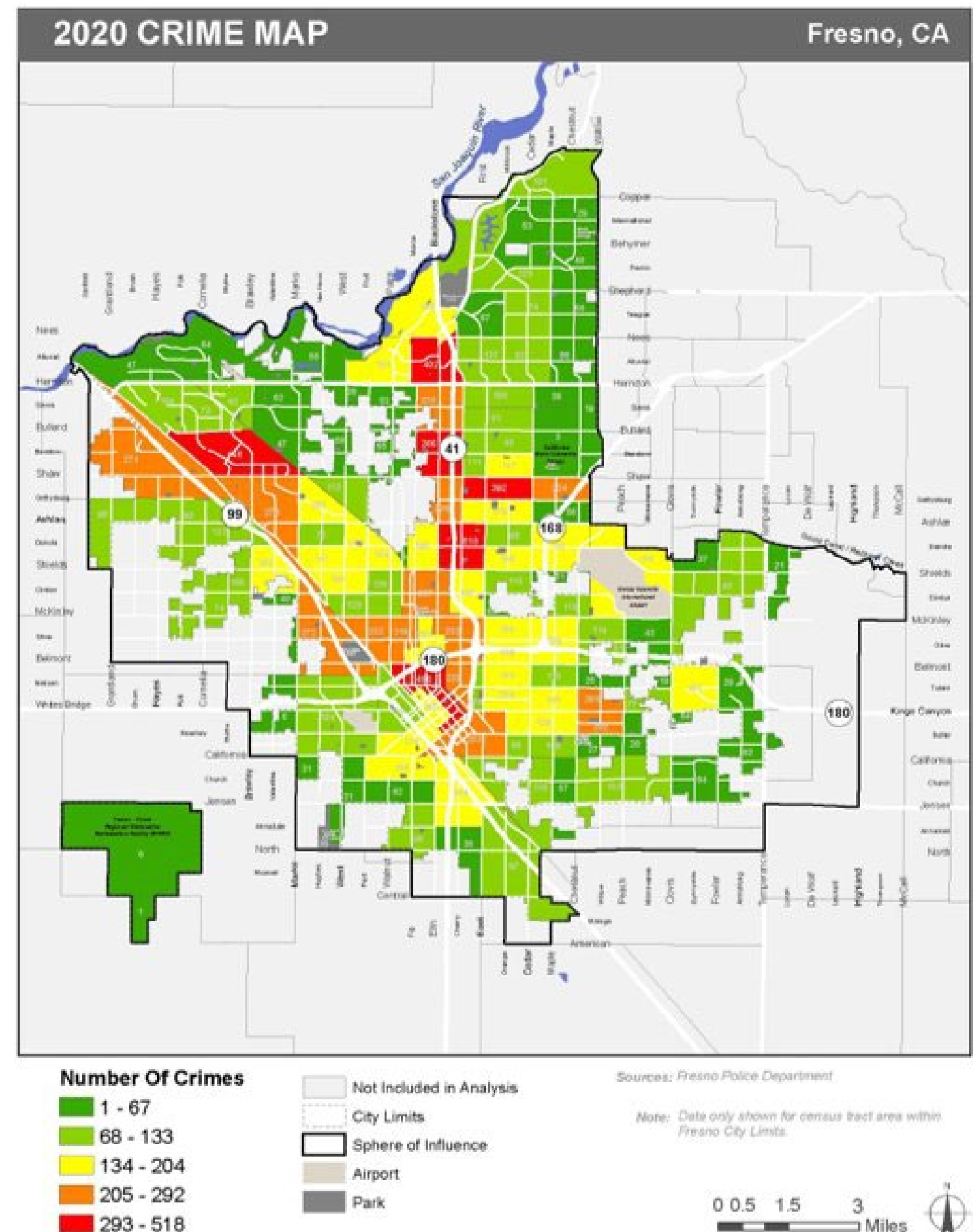
Equity Factors

(F) Neighborhood Safety

- Neighborhoods with a higher investment in public green space and activation tend to see more community cohesion.
- Red and orange on this map show areas in Fresno where there were a higher number of crimes reported in 2020.

SOURCE:
Fresno Police Department

DEFINITION:
Census Tracts where the number of crimes totals **205 and greater**.



Equity Factors

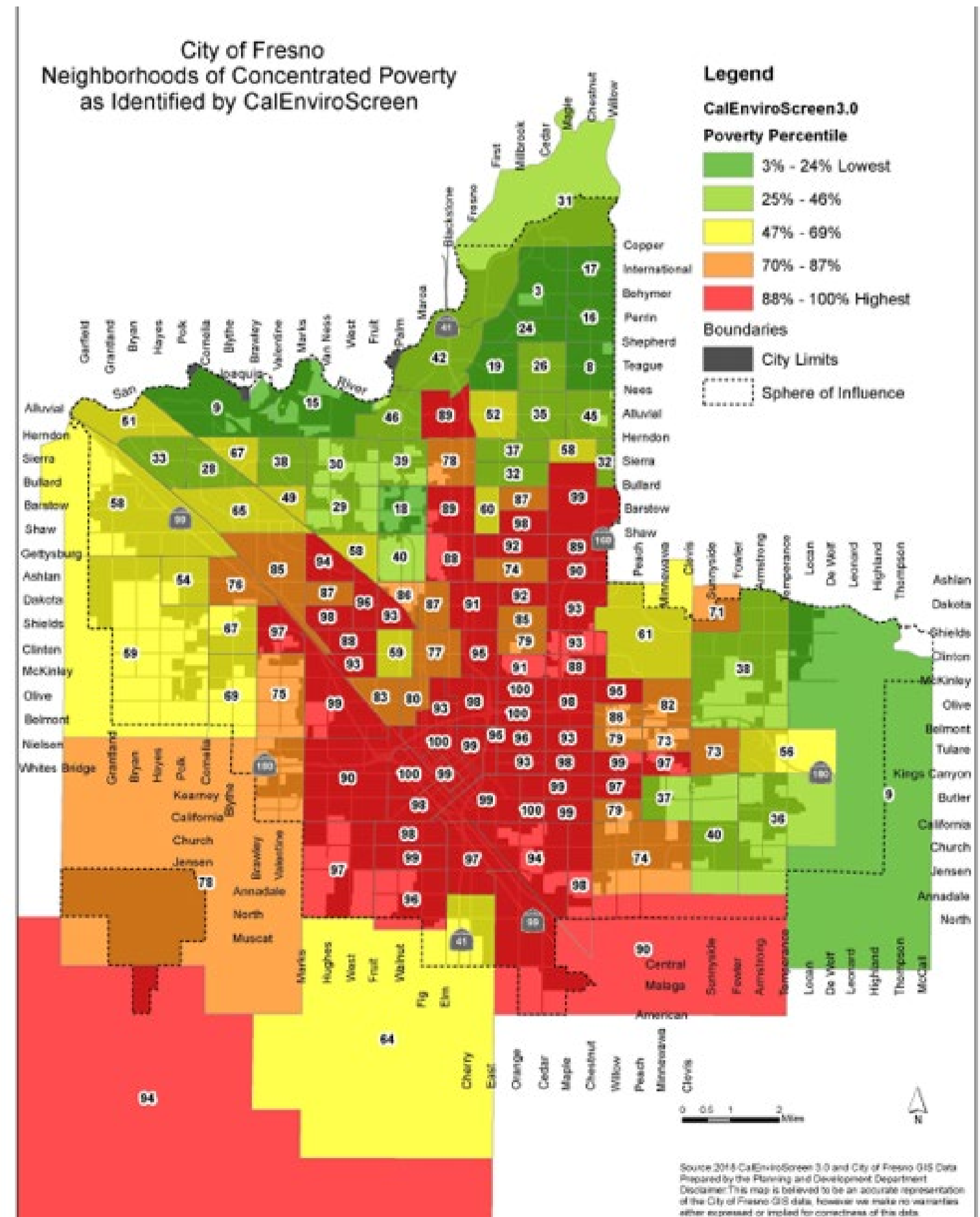
(G) Neighborhoods of Concentrated Poverty

- People with lower economic independence rely on public parks to fulfill their public health needs.
- Red on this map shows areas of concentrated poverty.

SOURCE:
CalEnviroScreen 3.0

DEFINITION:
Census Tracts where the percent of the population in poverty is **greater than 70%**.

Poverty is defined as Percent of the population living below two times the federal poverty level (5-year estimate, 2011-2015).



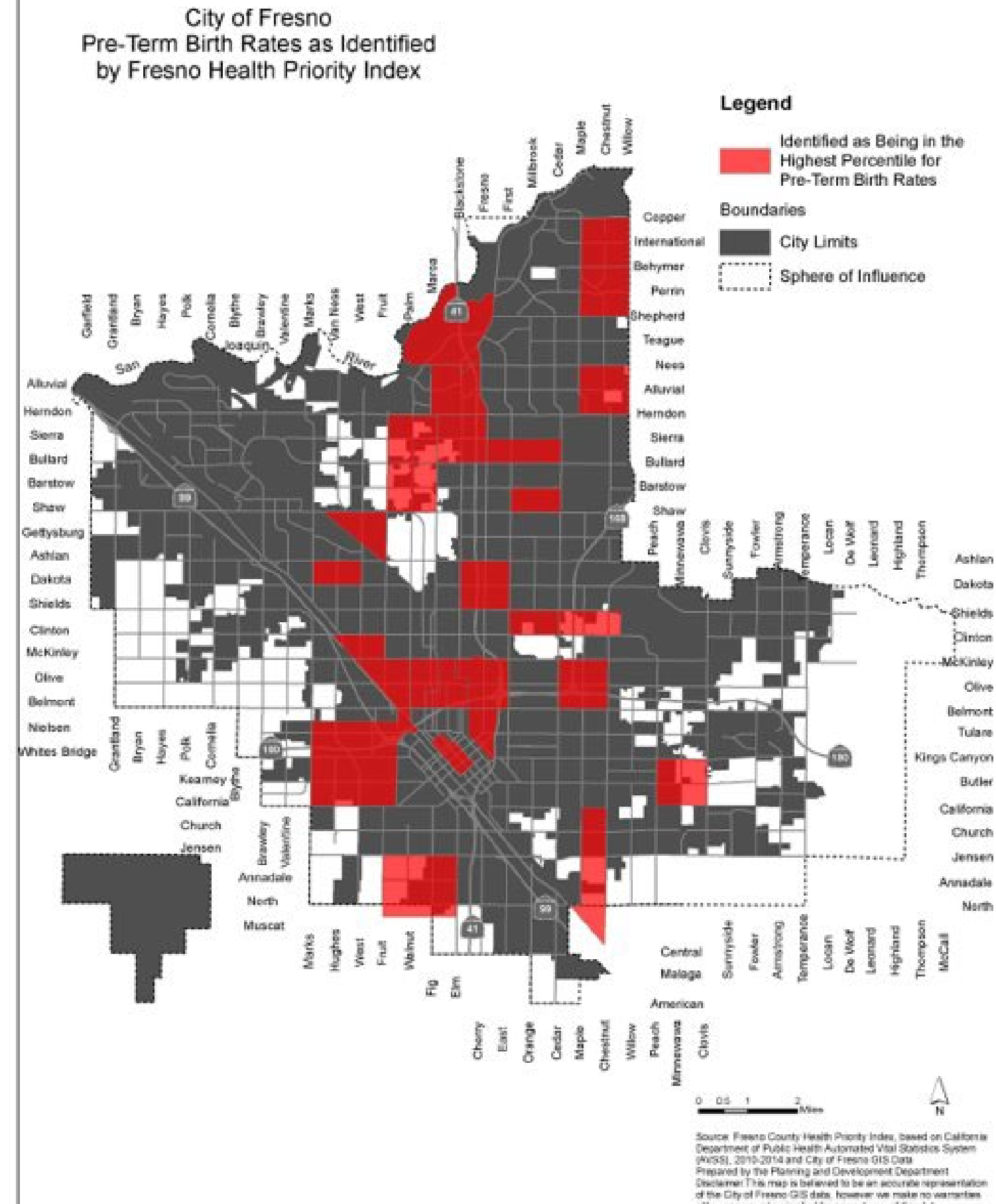
Equity Factors

(I) Pre-term Birth Rates

- Creating access to spaces where people can engage in physical activity and connect with the outdoors can help improve overall health.
- Red on this map shows areas of Fresno where there are higher rates of pre-term birth.

SOURCE:
Fresno Health Priority Index

DEFINITION:
Census Tracts identified as being in the **highest percentile** for pre-term births.



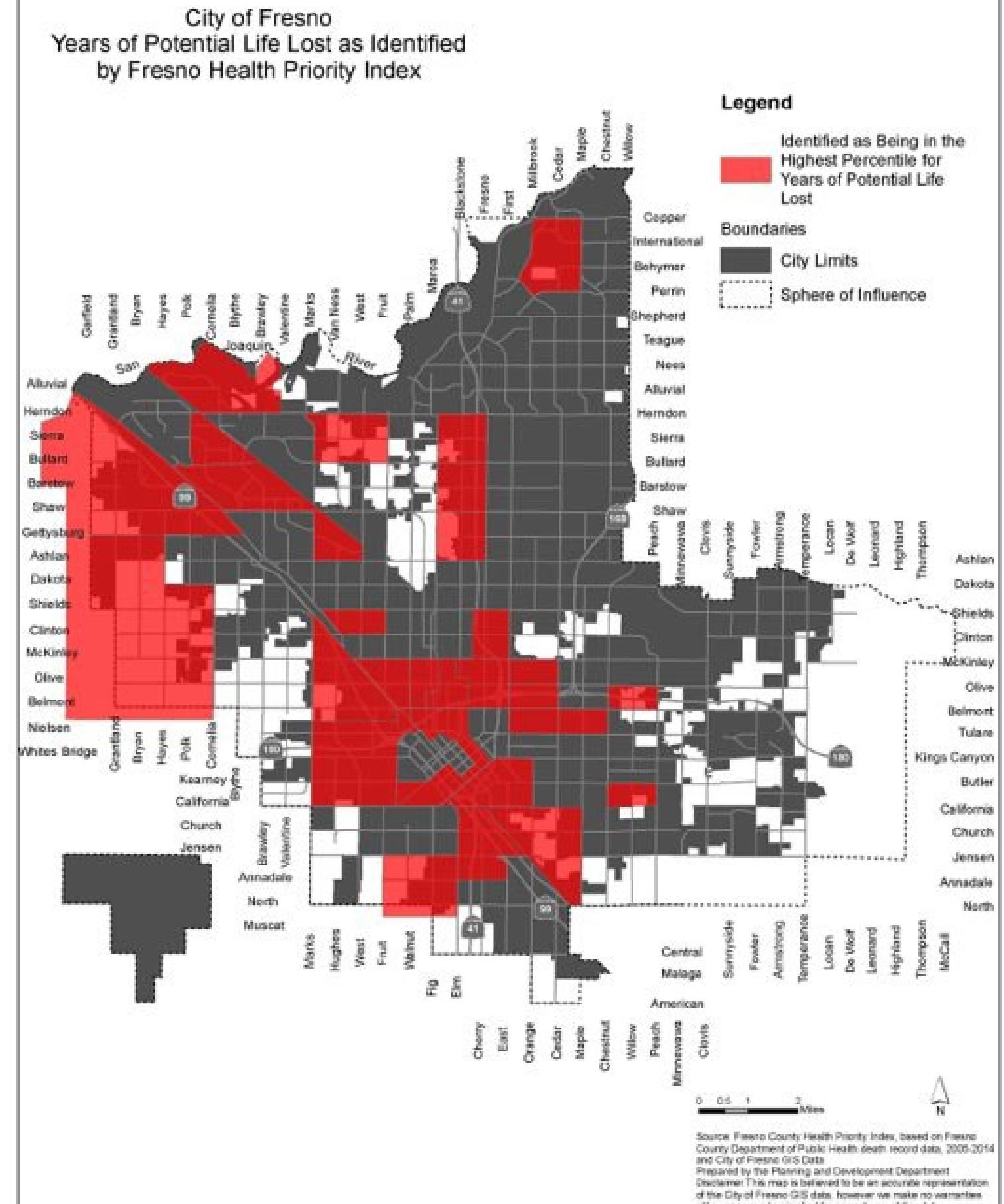
Equity Factors

(J) Years of Potential Life Lost

- Creating access to places where people can engage in physical activity and connect with the outdoors can help improve overall health.
- Red on this map shows areas of Fresno where there are higher rates of premature mortality, or people dying before the age of 65.

SOURCE:
Fresno County Health Priority Index

DEFINITION:
Census Tracts identified as being in the **highest percentile** for years of potential life lost



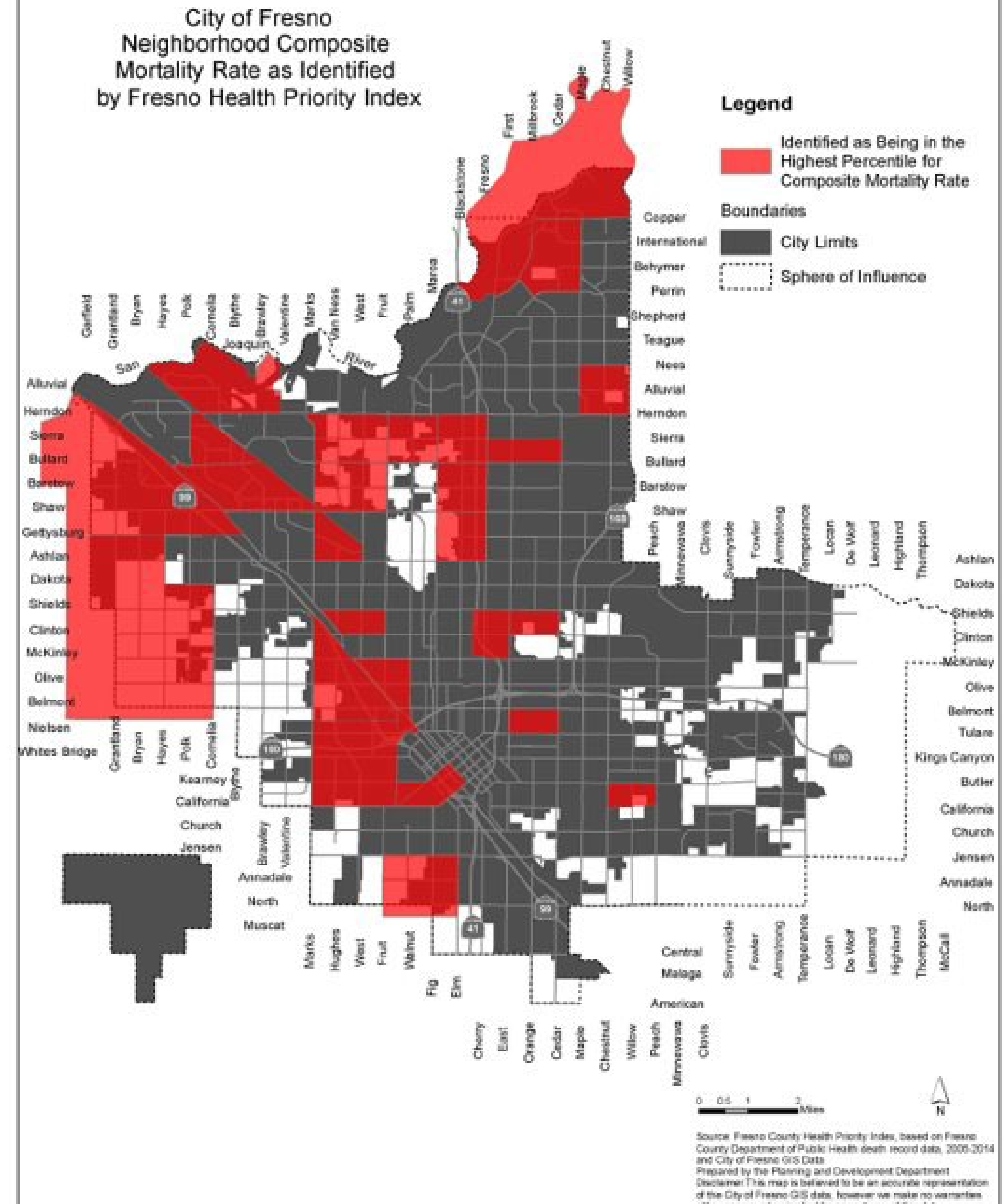
Equity Factors

(K) Neighborhood Composite Mortality Rate

- Creating access to places where people can engage in physical activity and connect with the outdoors can help improve overall health.
- Red on this map shows areas of Fresno with higher composite mortality rates.

SOURCE:
Fresno County Health Priority Index

DEFINITION:
Census Tracts identified as being in the **highest percentile** for composite mortality rate.



Current Definition Engagement

