

RECEIVED

Agenda Item: 1-C (File ID 16-123)

Date: 2/4/2016

2016 FEB 3 AM 10 46

## FRESNO CITY COUNCIL

CITY CLERK, FRESNO CA City of



### Supplemental Information Packet

Agenda Related Items – 1-C (File ID 16-123)

### **Contents of Supplement: Map of Fresno Priority 2 Regional Transmission Mains Alignment Adjustment**

#### Item(s)

Actions pertaining to the Fresno Priority 2 Regional Transmission Water Mains Pipeline Project:

1. Adopt findings for the Fresno Priority 2 Regional Transmission Water Mains Pipeline Project, Mitigated Negative Declaration (MND), State Clearing House No. 2015101105.
2. Approve an Amended Exhibit (Figure 1) to the Fresno Metropolitan Water Resources Management Plan Update, reflecting a minor pipeline routing change (citywide).

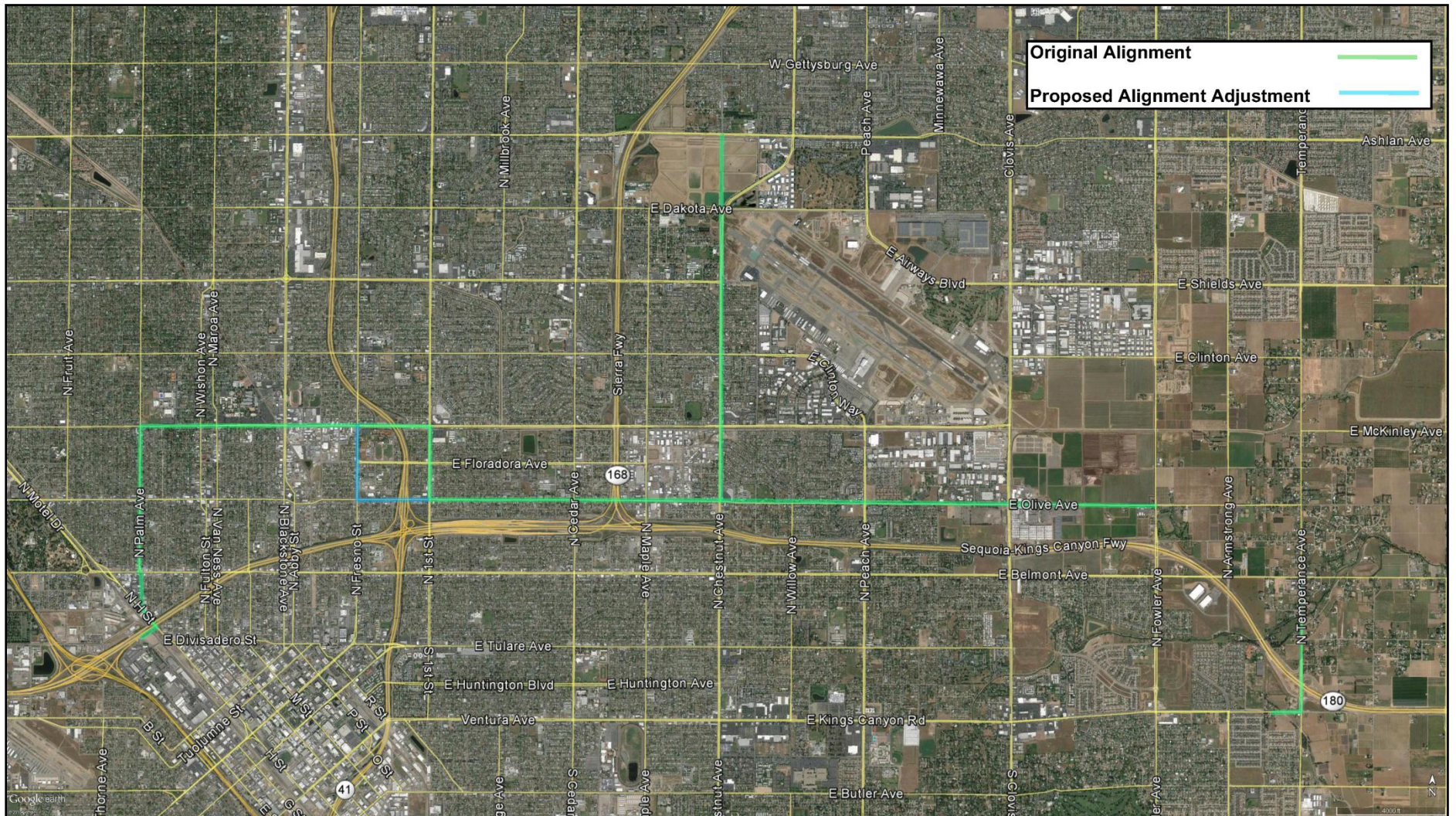
#### **Supplemental Information:**

Any agenda related public documents received and distributed to a majority of the City Council after the Agenda Packet is printed are included in Supplemental Packets. Supplemental Packets are produced as needed. The Supplemental Packet is available for public inspection in the City Clerk's Office, 2600 Fresno Street, during normal business hours (main location pursuant to the Brown Act, G.C. 54957.5(2)). In addition, Supplemental Packets are available for public review at the City Council meeting in the City Council Chambers, 2600 Fresno Street. Supplemental Packets are also available on-line on the City Clerk's website.

#### **Americans with Disabilities Act (ADA):**

The meeting room is accessible to the physically disabled, and the services of a translator can be made available. Requests for additional accommodations for the disabled, sign language interpreters, assistive listening devices, or translators should be made one week prior to the meeting. Please call City Clerk's Office at 621-7650. Please keep the doorways, aisles and wheelchair seating areas open and accessible. If you need assistance with seating because of a disability, please see Security.





**Figure 1**  
Fresno Priority 2 Regional Transmission Mains Alignment Adjustment