

June 24, 2016

MEMORANDUM

TO: Councilmembers

RE: Handout received during the June 23, 2016 Council Meeting

Attached, please find a copy of a handout received from Gabriela Mares of Cultivas La Salud during the public comment portion of the 9:00 A.M. Scheduled Matter, Actions on the Fiscal Year 2017 Budget and related items, from the June 23, 2016 City Council meeting.

If you have any questions, please contact me at x-7671.

Respectfully Submitted,



Todd Stermer,  
Assistant City Clerk  
City of Fresno



# Active Transportation Needs -Southeast Fresno

June 2016

# Winchell Elementary Area Orange & Lowe Avenues

## Issues

### Crosswalk

- Cracks in crosswalk
- Faded paint

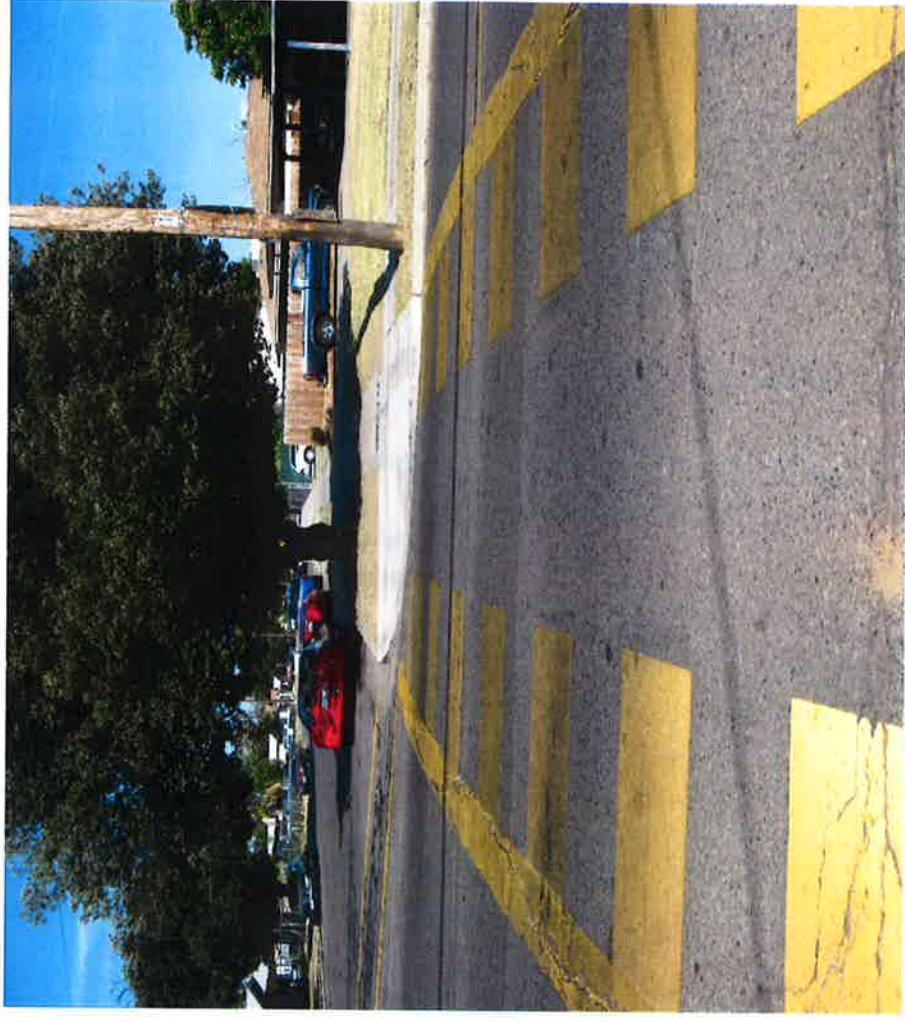
### Signage

- Poor visibility from 15+ ft.
- Does not promote traffic calming measures.

### Lighting

- Not enough street lights.
- Existing lights are dim.
- Not LED lights.

**Photo: Intersection of Orange  
& Lowe Ave. (Eastbound)**



# Winchell Elementary Area

## Orange & Lowe Avenues

### Recommendations

#### Crosswalk

- Maintenance needed, repaint existing lanes/lines.
- Invest in lighted crosswalk system.

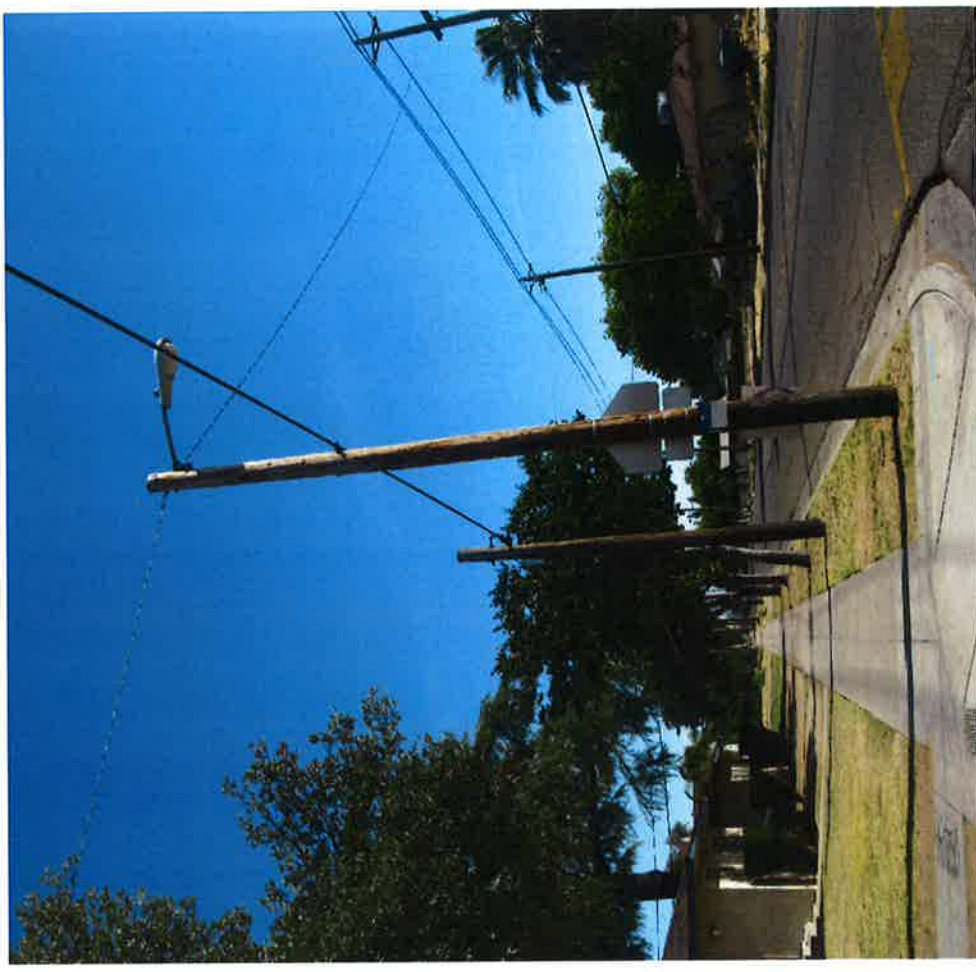
#### Signage

- Enforce traffic calming measures, by adding flashing red lights to existing signs & speed detector.

#### Lighting

- Insert more street lights.
- Upgrade existing light bulbs with LED lights.

**Photo: Intersection of Orange & Lowe Ave. (Southbound)**



# Winchell Elementary Area

## East Butler Avenue & South 8<sup>th</sup> Street

### Issues

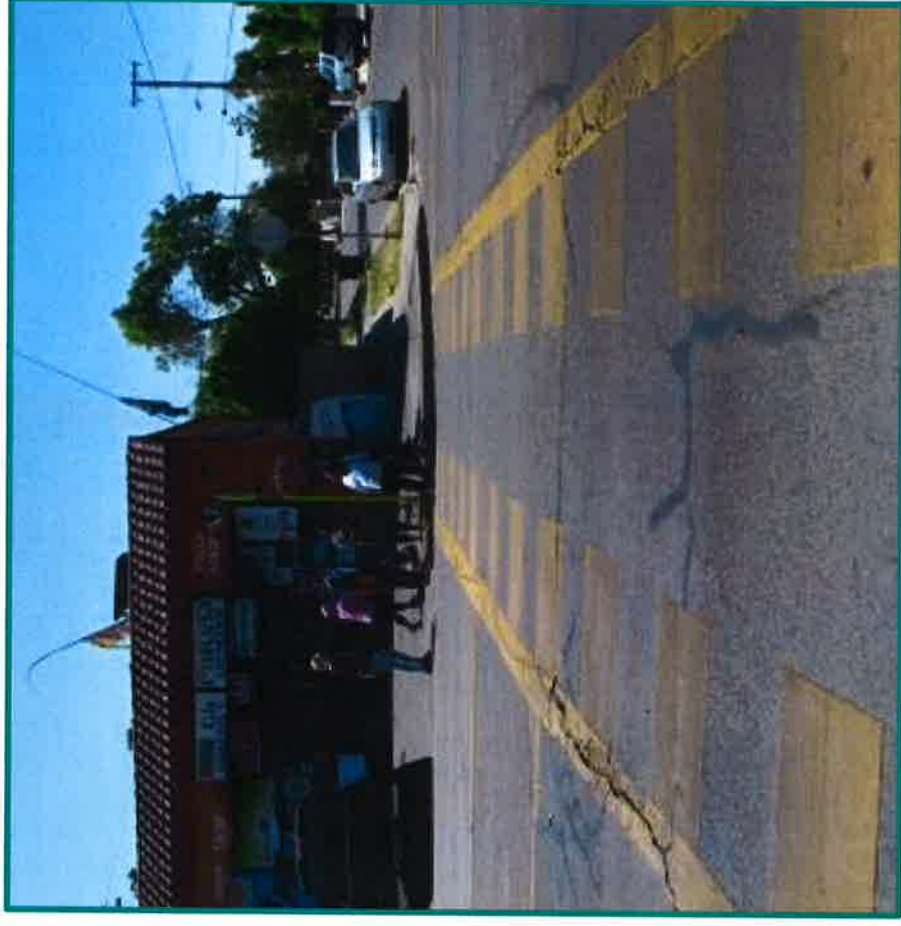
#### Crosswalk

- Poor maintenance of existing crosswalk
- Faded paint

#### Sidewalk

- Non-existing, positioning pedestrians in danger of being hit by a vehicle.
- End abruptly on Butler & 8th.
- Too narrow throughout neighborhood.

**Photo: Intersection of E. Butler & S. 8th Street. (Southbound)**



# Winchell Elementary Area

## East Butler Avenue & South 8<sup>th</sup> Street

### Issues

#### Curb

- Curb ramp is not aligned with crosswalk.
- Broken curb.

#### Signage

- Does not promote traffic calming measures.
- Poor visibility from 15+ ft.

#### Lighting

- Not enough street lights.
- Existing lighting is dim.

**Photo: Intersection of E. Butler Ave. & S. 8th Street. (Westbound)**



# Winchell Elementary Area

## East Butler Avenue & South 8<sup>th</sup> Street

### Recommendations

#### Crosswalk

- Repaint existing lines.
- Invest in lighted crosswalk system.

#### Sidewalk

- Insert sidewalks on Butler & surrounding neighborhood.

#### Curb

- Align curb & crosswalk in order to meet American Disability Act of 1990.

#### Signage

- Enforce traffic calming measures, by adding flashing red lights to existing signs & speed detector.

#### Lighting

- Insert more street lights.
- Upgrade existing light bulbs with LED lights.

# Sequoia Middle School Area

E. Woodward Ave. & S 9<sup>th</sup> St./E. Hamilton Ave. & S 9<sup>th</sup> St.

## Issues

### Sidewalk

- Sidewalks narrow all down S. 9<sup>th</sup> St. & E. Woodward Ave.
- Insufficient space to walk safely.
- Tripping hazards due to wear & tear and poor maintenance.
- Many uplifted sidewalks.

### Streets

- Streets are cracked.

### Lighting

- Poor lighting, lights are dim.

**Photo: Speed bumps in front of Sequoia (Westbound)**



# Sequoia Middle School Area

E. Woodward Ave. & S 9<sup>th</sup> St./E. Hamilton Ave. & S 9<sup>th</sup> St.

## Recommendations

### Sidewalk

- Needs to be expanded.
- Repair uplifted sidewalks.

### Streets

- Maintenance needed.
- Fill in potholes
- Resurface

### Lighting

- Insert more street lights.
- Upgrade existing light bulbs with LED lights.

**Photo: Speed bumps in front of Sequoia Middle School**



# Vang Pao Elementary

## E. Heaton Avenue & S. 10<sup>th</sup> Street

### Issues:

#### Sidewalk

- Sidewalks are narrow, not much space for safe walking.
- Tripping hazards from uplifted sidewalks.
- Sidewalks are not pedestrian friendly.

#### Crosswalk

- Existing crosswalks need maintenance. The painted lines are beginning to fade.

#### Lighting

- Poor lighting, lights are dim.

**Photo: In front of Vang Pao  
(Eastbound)**



# Vang Pao Elementary Area

## E. Heaton Avenue & S. 10<sup>th</sup> Street

### **Recommendations:**

#### **Sidewalk**

- Maintenance needed
- Repair hazardous uplifted sidewalks.

#### **Crosswalk**

- Existing crosswalks need maintenance.
- Paint faded lines.

#### **Lighting**

- Insert more street lights.
- Upgrade existing light bulbs with LED lights.

**Photo: Heaton Ave.  
(Westbound)**



# John Burroughs Elementary Area E. Tulare Street & N. Sierra Vista Ave.

## Issues

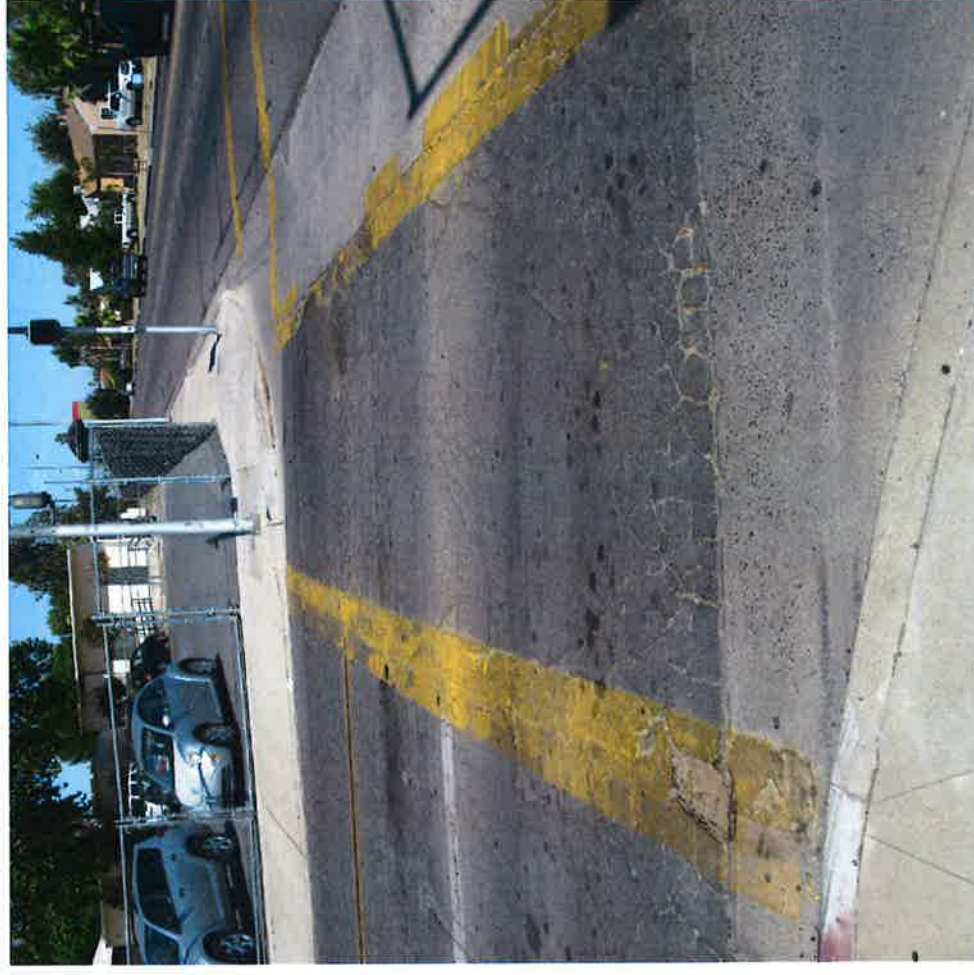
### Crosswalk

- Existing cracks in crosswalk
- Hazardous potholes.
- Faded paint lines.

### Sidewalk

- Sidewalks are too narrow which affect safe walking & biking.

**Photo: Crosswalk on E. Tulare St. & N. Sierra Vista Ave. (Westbound)**



# John Burroughs Elementary Area E. Tulare Street & N. Sierra Vista Ave.

## Issues

### Streets

- Cracks on N. Sierra Vista Avenue.

### Traffic Light

- Traffic congestion due to lack of left turning light on Tulare St. & Sierra Vista.

### Lighting

- Poor visibility during fall & winter seasons due to trees blocking light posts.

**Photo: Crosswalk on E. Tulare St. & N. Sierra Vista Ave. (Southbound)**



# John Burroughs Elementary Area

## E. Tulare Street & N. Sierra Vista Ave.

### Recommendations:

#### Crosswalk

- Repaint existing lines.
- Fill in potholes.

#### Sidewalk

- Widen sidewalks in order to promote safe walking & biking

#### Street

- Resurface streets & fill in potholes.

**Photo: N. Sierra Vista Ave.  
(Northbound)**



# John Burroughs Elementary Area E. Tulare Street & N. Sierra Vista Ave.

## Recommendations:

### Traffic Light

- Insert a turning left arrow at existing light to minimize traffic congestion and promote safe routes 2 school.

### Lighting

- Upgrade existing light bulbs with LED lights.
- Invest in Public Works in order to maintain trees which consequently obstruct lighting in fall & winter seasons.

**Photo: Crosswalk on E. Tulare St. & N. Sierra Vista Ave. (Westbound)**



# John Burroughs Elementary Area N. Sierra Vista Ave. & E. Iowa Ave.

## Issues

### Traffic Light

- High traffic in this area because of one-way street.
- Lanes are narrow and congested with cars.

### Lights

- Poor visibility at night during fall and winter months because trees block the light.

## Photo



# John Burroughs Elementary Area N. Sierra Vista Ave. & E. Iowa Ave.

**Photo: Iowa Ave. & Sierra  
Vista Ave. Intersection**

## **Recommendations**

### **Traffic Light**

- Insert a turning left arrow at existing light to alleviate traffic congestion in front of school zone.

### **Lights**

- Poor visibility at night during fall and winter months because trees block the light.



# Lane Elementary Area

## Issues

### Streets

- Many cracks on the street.
- Hazardous potholes.
- Lack of maintenance.

### Signage

- Poor visibility
- Does not promote traffic calming measures.
- Lack of maintenance.

**Photo: Sierra Vista Ave. & Liberty Ave.  
(Northbound)**



# Lane Elementary Area

## Recommendations

### Streets

- Existing streets need repair.

### Signage:

- Needs school crossing sign with flashing lights.
- Needs a school speed limit sign with solar flashing LED lights
- Pavement signage needs maintenance on East Butler.

**Photo: Sierra Vista Ave. & Liberty Ave. (Northbound)**

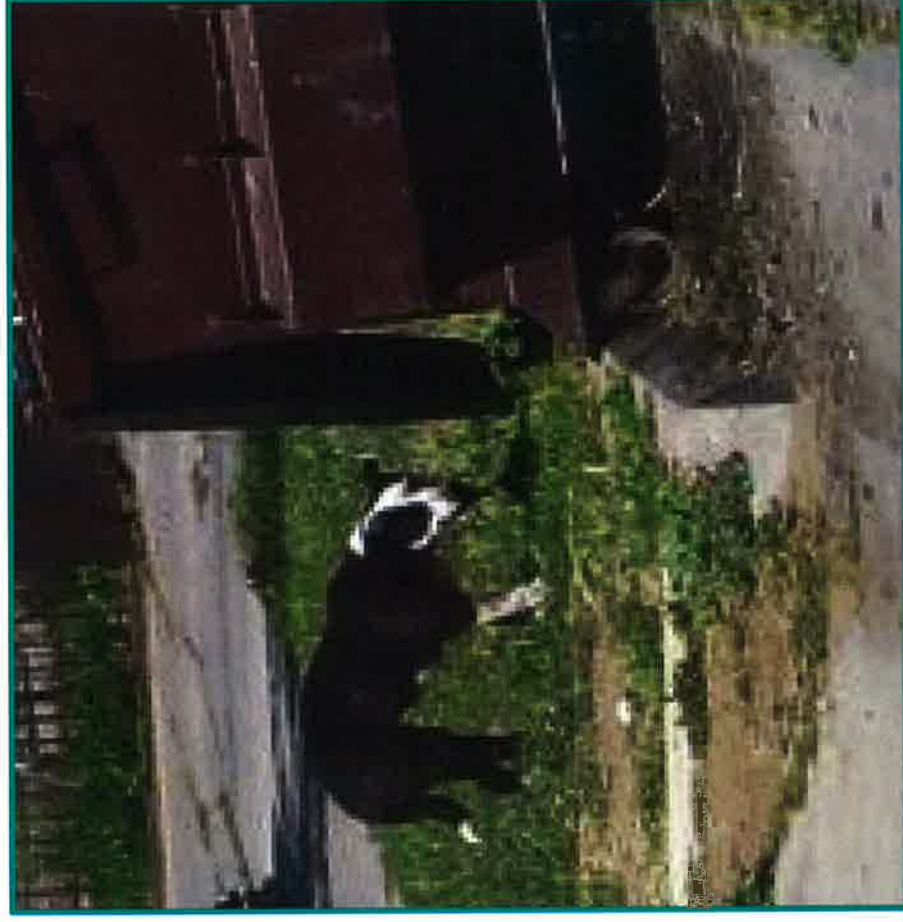


# Overall Challenges

## Issues

- Stray dogs.
- Trash/litter in alleys.
- Limited bus stops.
- Lack of bus shelters.

## Photo



# Overall Challenges

## Recommendations:

- Invest more funding in Animal Control.
- City invest in trash/litter in alleys picked up on going basis.
- Insert bus shelters in areas where public transportation is main source commuting.
- Add bus stops to FAX bus routes.



[www.CultivaLaSalud.org](http://www.CultivaLaSalud.org)

559.498.0870 | 2409 Merced St. Ste., 101 | Fresno, CA 93721

