

Recharge Fresno Program Update

ON TIME...ON BUDGET...HIGH QUALITY...SAFE

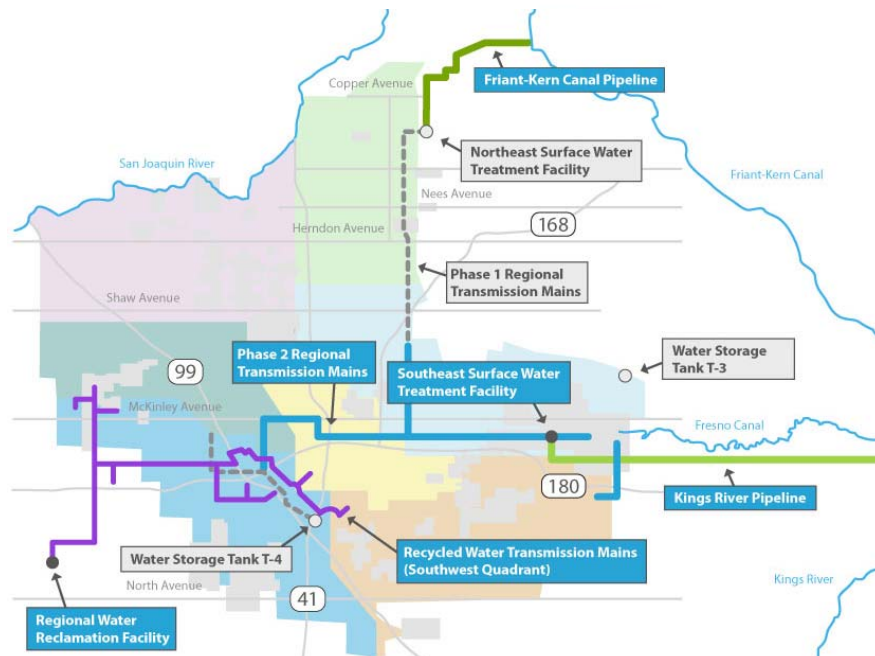
Department of Public Utilities

City Council Mtg - April 27, 2017

Program Delivery and Financial Status
DBE and Local Business Participation
Union and Local Resident Participation
Major Projects Status
Safety



DPU Major Projects



Major Construction Contracts

Ongoing



Construction Contract	Bid	Award	NTP	Substan. Compl.
<i>Raw Water</i>				
Friant-Kern Canal Pipeline	✓	✓	✓ May '16	Aug '17
Kings River Pipeline	✓	✓	✓ Jun '16	Dec '17
<i>Potable Water</i>				
SE Surface Water Trmt Facility	✓	✓	✓ Dec '15	Jun '18
RTM Segment A1	✓	✓	✓ Aug '16	Mar '18
RTM Segment A2	✓	✓	✓ Nov '16	Feb '18
<i>Recycled Water</i>				
SW RWTM Segment SW1B	✓	✓	✓ Feb '16	May '17
SW RWTM Segment SW1C	✓	✓	✓ May '16	May '17



Major Construction Contracts

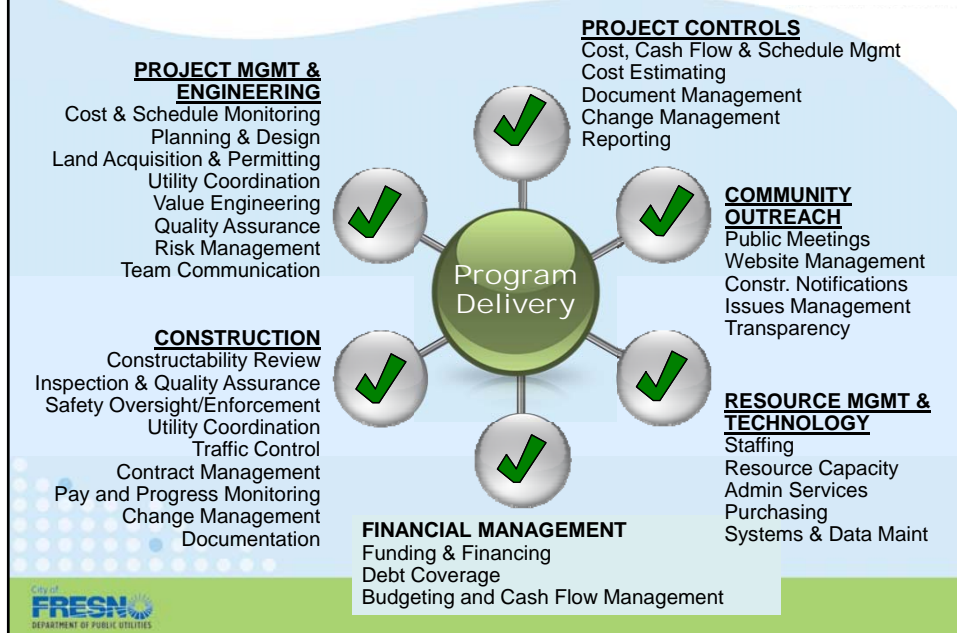
Upcoming



Construction Contract	Bid	Award	NTP	Substan. Compl.
<i>Potable Water</i>				
RTM Segment B	Apr '17	May '17	Jul '17	Dec '17
RTM Segment C	Jun '17	Jul '17	Sep '17	Jun '18
<i>Recycled Water</i>				
SW RWTM Segment SW1C2	Jul '17	Aug '17	Sep '17	Jun '18
SW RWTM Segment SW4	Nov '17	Dec '17	Jan '18	Dec '18
SW RWTM Segment SW1D	Mar '18	Apr '18	May '18	Jan '19
SW RWTM Segment SWPS1	Mar '18	Apr '18	May '18	Jan '19



Non-Construction Program Activities



Program Status

Project Mgmt, Engineering and Community Relations

- Overall program under budget and on schedule for SESWTF start-up in FY2019
- Employing EVM (Earned Value Mgmt) practices on all major projects
- Collaborating with County of Fresno and Fresno Irrigation District
- Driving best and most cost-effective technical solutions
- Maintaining strong public outreach to keep community up to date
- Implementing similar PM/CM practices on recycled water distribution system projects

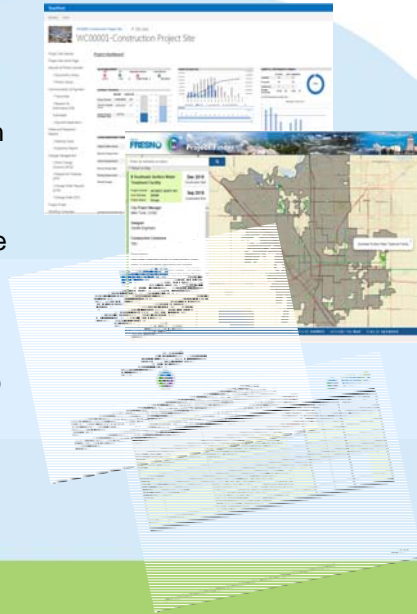


Program Status

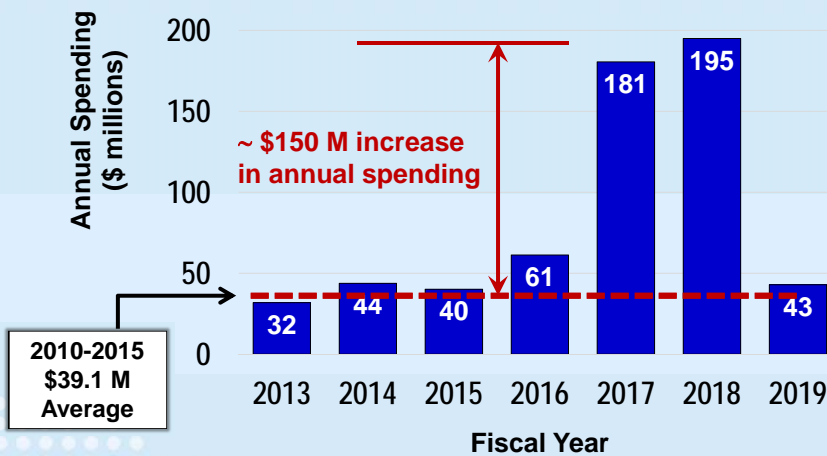
Construction Delivery



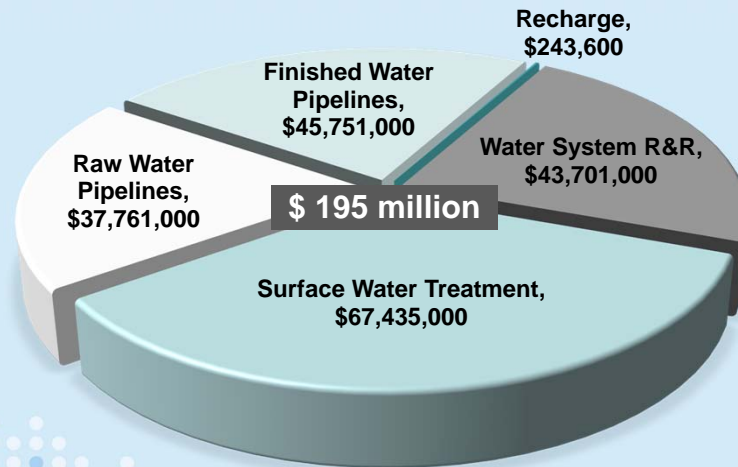
- Maintaining safety for employees, partners and the community
- Regular reporting and interaction with Capital Project Oversight Board
- Managing cost and schedule risk
- Collaborating with contractors to drive on schedule performance.
- Continued focus on local business participation.
- Coordinating with utility companies to best manage conflicts during construction.
- Effectively using CM documentation and reporting tools.



Water Division CIP Spending (FY2013 – FY2019)



Water Division CIP Spending (FY2018)



Managing Program Within the Approved \$429.1 Million Rate Plan (WATER)



Rate plan funding for projects with 30-year low-interest SRF loans:

	Raw Water Pipelines		Treatment		Finished Water Pipelines		Total
Rate Plan	\$ 98.4 M	+	\$ 186.4 M	+	\$ 55.4 M	=	\$ 340.2 M



EAC	\$ 77.9 M	+	\$ 186.4 M	+	\$ 75.9 M	=	\$ 340.2 M
------------	-----------	---	------------	---	-----------	---	------------

Remaining contingency included in EAC for unanticipated change:

	\$ 2.5 M	+	\$ 3.4 M	+	\$ 1.0 M	=	\$ 6.9 M
--	----------	---	----------	---	----------	---	----------

DBE and Local Business Participation



	Total Value	Work Contracted/Subcontracted to DBE Businesses	
Construction	\$ 297.7 M	\$ 33.9 M	11.7 %

Values as shown in bids for construction contracts awarded through March 2017. Includes construction contracts for DPU projects > \$10 million.

	Total Value	Work Contracted/Subcontracted to Companies with Local Offices	
Consulting	\$ 77.0 M	\$ 41.3 M	53.7 %
Construction	\$ 297.7 M	\$ 153.8 M	51.7 %
Total	\$ 374.7 M	\$ 195.1 M	52.1 %

Actual/projected expenditures for awarded contracts through March 2017. Includes PM/CM, design and construction services for DPU projects > \$10 million.



Union and Local Resident Participation



- Monitoring and documentation of workforce statistics related to union affiliation and residency.
- Nine (9) completed and ongoing construction contracts with total construction value of \$297.7 million.
- Over 291,000 hours worked.

	Hours	% of Total Hours
Work by Union Members	278,151	95 %
Work by Local Residents	180,652	62 %

Actual hours for completed and ongoing construction contracts awarded through March 2017. Includes construction contracts for DPU projects > \$10 million.



Friant Kern Canal Pipeline (FKCP)



- 4.5-miles of 60-inch diameter pipeline
- Improved water source for NESWTF
- 30-year, low-interest SRF loan



CONSTRUCTION SCHEDULE

- Notice to proceed: 05/31/16
- Original duration: 500 days
- **Additional days:** 0
- Final completion: 10/12/17
- Time elapsed: 61%

CONTRACT VALUE

- Original contract: \$ 15,157,862
- Suppl budget: \$ 300,000
- **Change orders:** \$ -(70,274)
- Current contract: \$ 15,087,588
- Actual cost: \$ 12,132,351
- Percent spent: 80%

Kings River Pipeline (KRP)



- 13-miles of 72-inch diameter pipeline
- Water source for SESWTF
- 30-year, low-interest SRF loan



CONSTRUCTION SCHEDULE

- Notice to proceed: 06/27/16
- Original duration: 575 days
- **Additional days:** 60
- Final completion: 03/23/18
- Time elapsed: 44%

CONTRACT VALUE

- Original contract: \$ 45,083,750
- Suppl budget: \$ 500,000
- **Change orders:** \$ 0
- Current contract: \$ 45,083,750
- Actual cost: \$ 11,737,912
- Percent spent: 26%

Southeast Surface Water Treatment Facility (SESWTF)



- Conventional surface water treatment facility
- Initial capacity = 54 MGD, Re-rate to 80 MGD
- 30-year, low-interest SRF loan



CONSTRUCTION SCHEDULE

- Notice to proceed: 12/31/15
- Original duration: 1000 days
- **Additional days:** 0
- Final completion: 09/25/18
- Time elapsed: 46%

CONTRACT VALUE

- Original contract: \$ 158,766,000
- Suppl budget: \$ 1,000,000
- Change orders: \$ 1,130,895
- Current contract: \$ 159,896,895
- Actual cost: \$ 76,271,583
- Percent spent: 48%

Regional Transmission Main – Segment A1 (RTM A1)



- 13-miles of 20-66 inch pipeline, 4 construction contracts
- Finished water from SESWTF
- 30-year, low-interest SRF loan



CONSTRUCTION SCHEDULE

- Notice to proceed: 08/29/16
- Original duration: 500 days
- **Additional days:** 0
- Final completion: 01/10/18
- Time elapsed: 43%

CONTRACT VALUE

- Original contract: \$ 28,471,884
- Suppl budget: \$ 300,000
- **Change orders:** \$ 0
- Current contract: \$ 28,471,884
- Actual cost: \$ 9,331,473
- Percent spent: 33%

Regional Transmission Main – Segment A2 (RTM A2)



- 13-miles of 20-66 inch pipeline, 4 construction contracts
- Finished water from SESWTF
- 30-year, low-interest SRF loan



CONSTRUCTION SCHEDULE

- Notice to proceed: 11/08/16
- Original duration: 500 days
- **Additional days:** 0
- Final completion: 03/22/18
- Time elapsed: 29%

CONTRACT VALUE

- Original contract: \$ 18,204,180
- Suppl budget: \$ 300,000
- **Change orders:** \$ 0
- Current contract: \$ 18,204,180
- Actual cost: \$ 915,568
- Percent spent: 5%

Recycled Water Transmission Main – Segment SW1B



- 3.9 miles of 10-48 inch pipeline, 7 construction contracts
- Recycled water from FCRWRF to users in SW Fresno
- Low-interest SRF loan



CONSTRUCTION SCHEDULE

- Notice to proceed: 02/01/16
- Original duration: 255 days
- **Additional days:** 0
- Final completion: 10/12/16
- Time elapsed: 166%

CONTRACT VALUE

- Original contract: \$ 9,341,491
- Suppl budget: \$ 300,000
- **Change orders:** \$ 0
- Current contract: \$ 9,341,491
- Actual cost: \$ 8,530,359
- Percent spent: 91%

Recycled Water Transmission Main – Segment SW1C



- 3.9 miles of 10-48 inch pipeline, 7 construction contracts
- Recycled water from FCRWRF to users in SW Fresno
- Low-interest SRF loan



CONSTRUCTION SCHEDULE

- Notice to proceed: 05/31/16
- Original duration: 155 days
- **Additional days: 0**
- Final completion: 11/01/18
- Time elapsed: 196%

CONTRACT VALUE

- Original contract: \$ 4,198,175
- Suppl budget: \$ 155,000
- **Change orders: \$ 269,718**
- Current contract: \$ 4,467,893
- Actual cost: \$ 4,165,642
- Percent spent: 93%

Protection of Employees, Partners and the Public

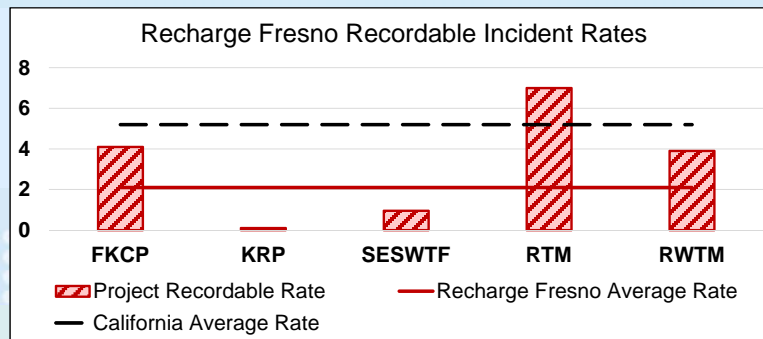
- Elevation of Safety Culture – “TARGET ZERO”, with goal to bring everyone home as healthy as they left
- Monthly Safety Discussions with Program Team
- Preparation and Distribution of Weekly Safety Briefs
- Site Observation and Documentation of Issues/Incidents
- Weekly Safety Discussions with Contractor
- Bi-weekly Safety Committee Meetings



Recharge Fresno Safety Performance



- An OSHA “Recordable Incident” is a work-related injury or illness that requires medical treatment beyond first aid.
- For Recharge Fresno, most severe recordable incident has been back strain. No incident has resulted in lost work time.
- Recordable Incident Rate = incidents x 200,000 / work hours.



Staff Requested Council Action

(May 11, 2017)



Staff will recommend approval of Amendment No. 6 to the Professional Consultant Agreement with CH2M HILL Engineers, Inc., for Fiscal Year 2018 Program Management Services and for extension of the Agreement term.

- **Annual funding will be determined based on staff needs projections for project management, engineering, construction management and other technical support.**
- **All funding for Program Management services is including within DPU's capital projects' budgets.**

Program Management Services Expenditures



- Water CIP Value (FY15 - FY19) \$ 520 M
 - Construction Value \$ 385 M (74%)
 - Non-construction Value \$ 135 M (26%)

Period of Service	Actual Expenditure
FY 2014	\$ 6,992,958
FY 2015	\$ 6,658,595
FY 2016	\$ 7,296,265
FY 2017	\$ 11,950,000

** FY2017 value as projected through July 2017



On Time
On Budget
High Quality
Safe

www.RechargeFresno.com

1-888-FRESNOH2O

