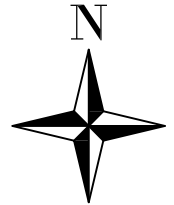


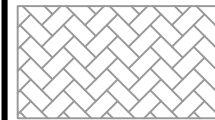
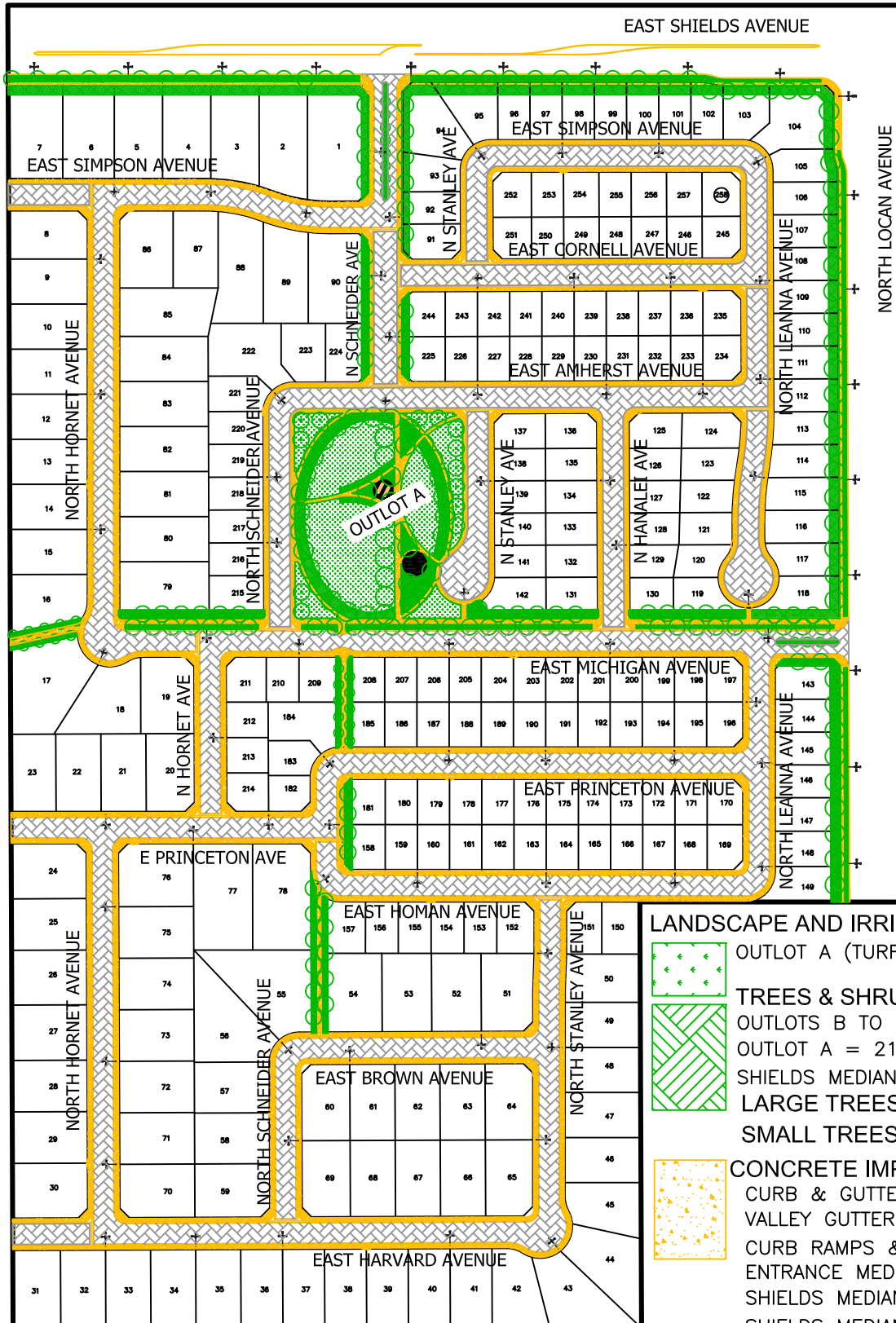


FINAL TRACT MAP NO. 5592  
"NO PHASES"



NOT TO SCALE  
May 15, 2018

PUBLIC WORKS DEPARTMENT  
TRAFFIC AND ENGINEERING SERVICES DIVISION  
FEATURES TO BE ADDED BY ANNEXATION NO. 91  
COMMUNITY FACILITIES DISTRICT NO. 11



INTERIOR PAVEMENT:  
TOTAL AREA = 374,879 SF



STREET LIGHTS:  
STANDARD = 87 EACH

\*OUTLOT A DETAILS  
- SEE SHEET 2 OF 2

LANDSCAPE AND IRRIGATION:



OUTLOT A (TURF) = 50,930 SF



TREES & SHRUBS

OUTLOTS B TO L = 82,117 SF

OUTLOT A = 21,276 SF

SHIELDS MEDIAN = 3,063 SF

LARGE TREES = 196 EA

SMALL TREES = 32 EA



CONCRETE IMPROVEMENTS:

CURB & GUTTER = 23,355 LF

VALLEY GUTTER = 4,597 SF

CURB RAMPS & WALKWAYS = 150,643 SF

ENTRANCE MEDIAN CURB = 590 LF

SHIELDS MEDIAN CAPPING = 1,162 SF

SHIELDS MEDIAN EDGE = 144 SF

OUTLOT A PADS = 1,180