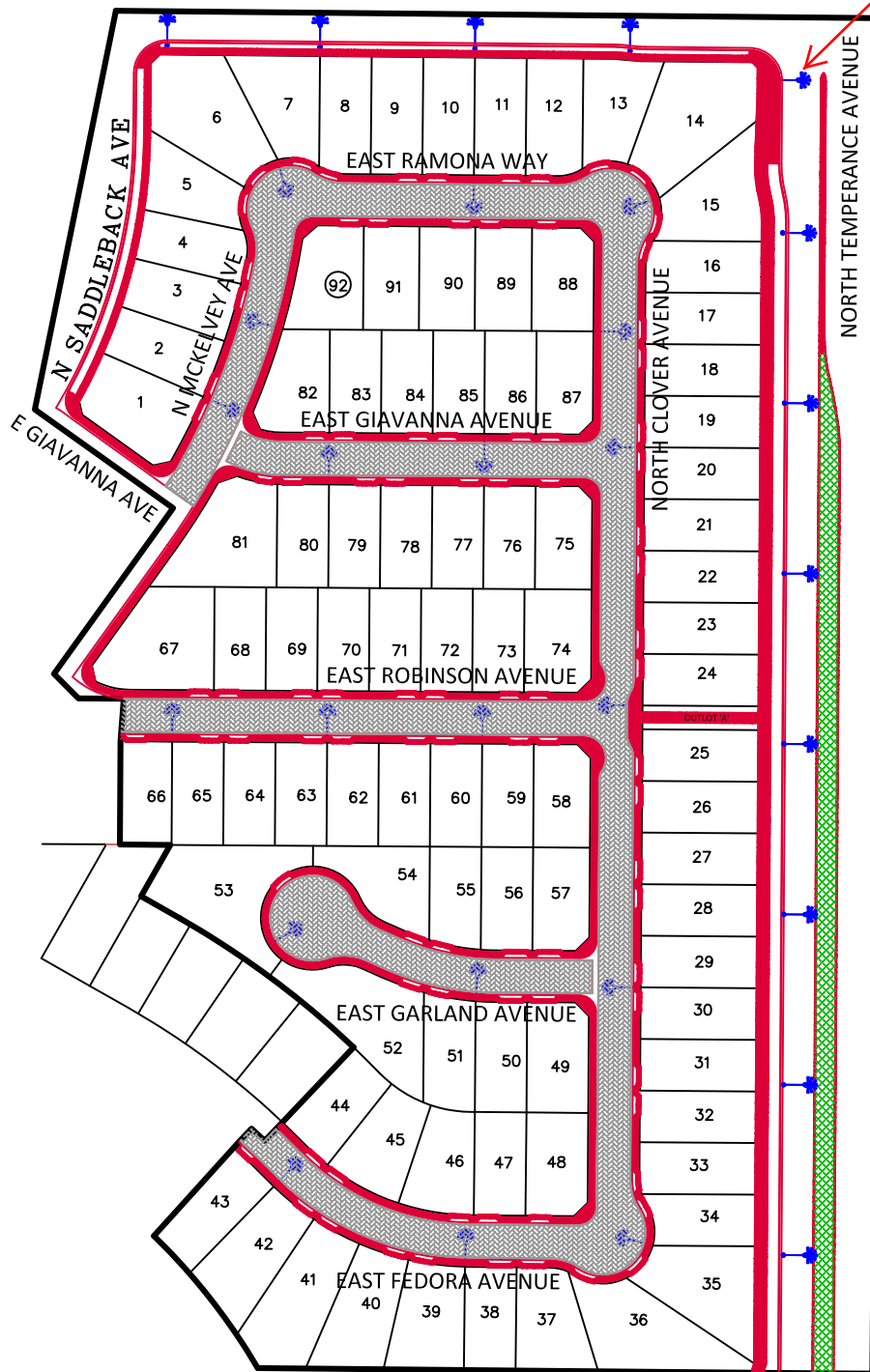


CITY OF  
**FRESNO**  
 PUBLIC WORKS DEPARTMENT  
 TRAFFIC AND ENGINEERING SERVICES DIVISION  
 FEATURES TO BE ADDED BY ANNEXATION NO. 89  
 COMMUNITY FACILITIES DISTRICT NO. 11



NOT TO SCALE  
 July 6, 2018

FINAL TRACT MAP NO. 6216,  
 PHASE III OF VTM 5571  
 (T5571 PHASE I, T6163 PHASE II)



Safety Light on  
 Future Signal Pole

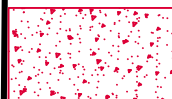
LANDSCAPE AND IRRIGATION:



HALF MEDIAN = 9,037 SF  
 LARGE TREES = 21 EA  
 SMALL TREES = 8 EA

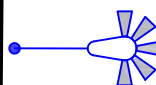


INTERIOR PAVEMENT:  
 TOTAL AREA = 107,946 SF



CONCRETE IMPROVEMENTS:

CURB & GUTTER = 8,862 LF  
 VALLEY GUTTER = 654 SF  
 SIDEWALK & CURB RAMPS = 44,489 SF  
 MEDIAN CAPPING = 672 SF  
 MEDIAN MAINTENANCE BAND = 988 SF



STREET LIGHTS:  
 TOTAL = 29 EACH

(28 - Local LED, 1 Safety,  
 1 Safety on Signal)