

Agenda Item: ID#19-1671 (3:00 P.M.)

Date: 5/16/2019

RECEIVED

2019 MAY 17 P 12:30

CITY OF FRESNO
CITY CLERK'S OFFICE

FRESNO CITY COUNCIL



Late Submission Information Packet

Agenda Related Item(s) – ID#19-1671 (3:00 P.M.)

Contents PowerPoint Presentation

(Hard copies were distributed during the meeting)

Item(s)

Request for City partnership in development and filing of a \$4.9 million dollar Prop 68 Parks Grant Application, and a \$400,000 Cal Fire Grant Application.

Supplemental Information:

Any agenda related public documents received and distributed to a majority of the City Council after the Agenda Packet is printed are included in Supplemental Packets. Supplemental Packets are produced as needed. The Supplemental Packet is available for public inspection in the City Clerk's Office, 2600 Fresno Street, during normal business hours (main location pursuant to the Brown Act, G.C. 54957.5(2)). In addition, Supplemental Packets are available for public review at the City Council meeting in the City Council Chambers, 2600 Fresno Street. Supplemental Packets are also available on-line on the City Clerk's website.

Americans with Disabilities Act (ADA):

The meeting room is accessible to the physically disabled, and the services of a translator can be made available. Requests for additional accommodations for the disabled, sign language interpreters, assistive listening devices, or translators should be made one week prior to the meeting. Please call City Clerk's Office at 621-7650. Please keep the doorways, aisles and wheelchair seating areas open and accessible. If you need assistance with seating because of a disability, please see Security.

RECEIVED

2019 MAY 16 P 3:01

CITY OF FRESNO
CITY CLERK'S OFFICE



Southeast Fresno Community
Economic Development
ASSOCIATION

ABOUT THE NEED FOR MORE PARKS

- Fresno Parks Master Plan Adopted on December 14, 2017 identifies the shortage of parks in our City.
- **Studies show that low-income communities of color are disproportionately affected by higher rates of health problems and often have limited access to physical activity settings such as parks, playgrounds, trails, community gardens, and other open spaces.**
- **Source: The Trust for Public Land (TPL) For Parks and Health**
- **Proposition 68 is a great opportunity to address this problem**

About the Proposed Project Site

- Located at 2155 S. Peach Avenue
- 49 acres
- North parcel: 18.5 acres
- South Parcel: 30.5 acres
- Separated by San Joaquin Railroad
- Donated to the City of Fresno 12 years ago by US National Park Service

LET US BUILD A PARK TOGETHER

CONSTRUCTION OF A REGIONAL PARK AND SOCCER COMPLEX

Proposed Park Site : 2155 S. Peach Ave. • Fresno, CA 93727

Learn how you can help:

www.SEFresnoSoccerPark.com



Adopt-A-Park Project

- We are already working together since February 2018 when your Council approved an agreement with us to do the following:
- SEFCEDA's current work on the Northern Parcel (18.5 acres):
- Clean up the Site, Prune trees, remove weeds.
- Plant 120 trees and 60,000 sq ft of turf
- Install irrigation system
- Maintain improvements for three years
- Completion due on June 30, 2019





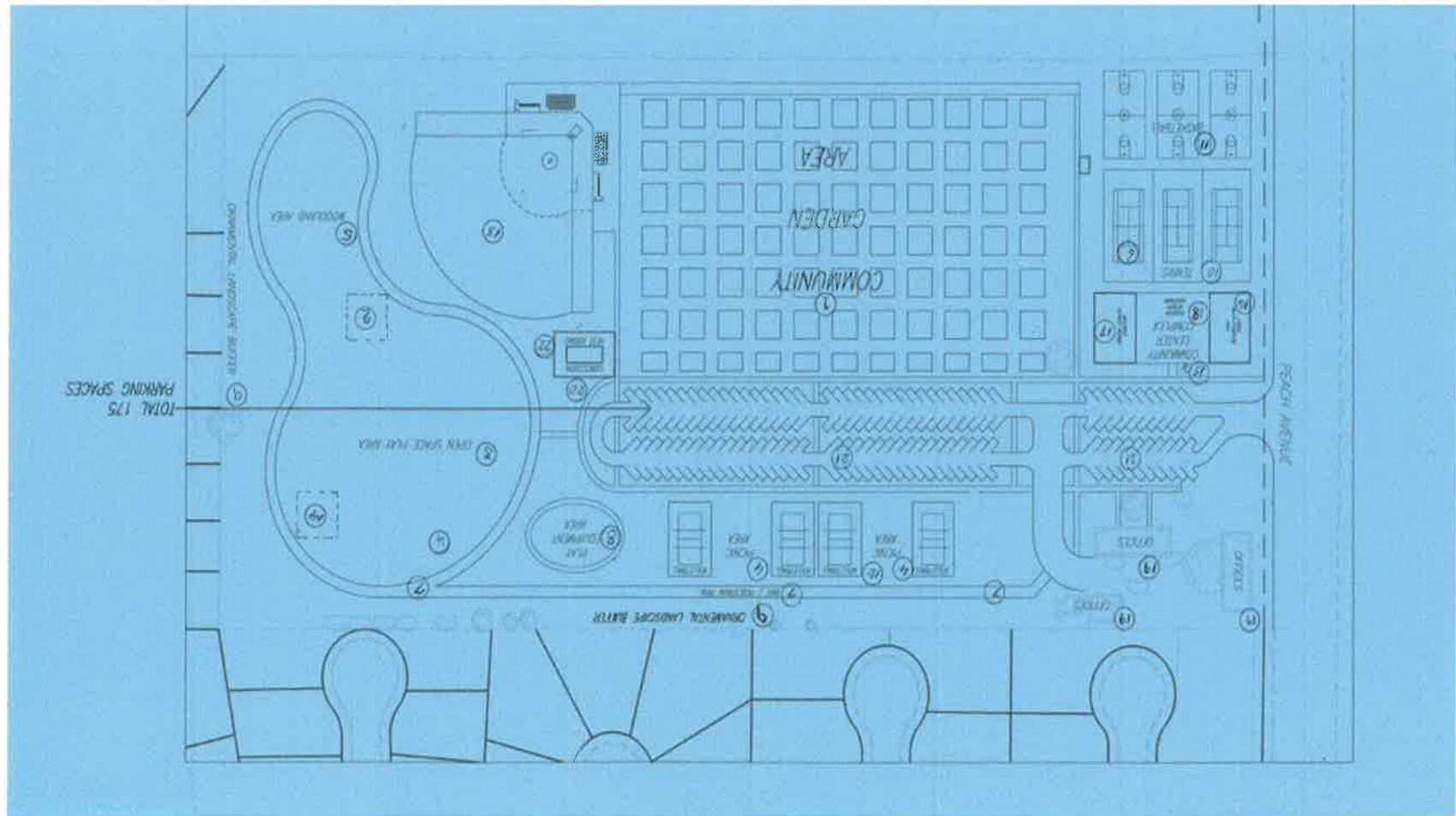
**VOLUNTEERS: 553, 1945 Hours,
Estimated value: \$40,845**

- Southeast Fresno Community Economic Development Assn.(SEFCEDA)
- Roosevelt Youth Soccer League (RYSL); California Youth Soccer Association/Dist VII; Every Neighborhood Partnership; Well Community Church; Peoples Church; Fresno Building Healthy Communities; Central Valley Boys Scouts; Mountain View Community Church; CN Education Fund.

CONTRIBUTIONS/DONATIONS/ SUPPORTERS:

- California Releaf; Cal-Fire; Vallarta Markets; Irritech USA; Industrial Waste and Salvage; Centro La Familia; Fresno Latino Rotary; Latino Peace Officer Association; SEFCEDA; Roosevelt Youth Soccer League; California Endowment, Economic Development Corporation Serving Fresno County, Fresno State, Fresno Pacific University, EOC's Conservation Corps, ABC Channel 30, Big Fresno Fair, Pom Wonderful, Donaghy Sales; Home Depot; Lowe's and more...
- Luis Chavez, Jim Yovino, John Leal, Joaquin Arambula, Carole Goldsmith, Valerie Davis, Nathen Magsig, Tim Liles, Silvestre Arias and thousands of residents
- So far we have generated more than \$200,000 for this project in cash contributions and grants, volunteer labor and pro bono professional services. In conversations with other local businesses interested in supporting this project. By the time we finish it will be \$300,000. Concert at Fairgrounds in September, 2019.

Conceptual Plan



PROJECT SCOPE-PHASE I

- 4 Adult soccer fields
- 4 Futsal Courts/Convertible to basketball and volleyball.
- Existing com. Garden
- Veterans memorial garden
- Picnic areas
- All-purpose trail w/lots of trees.
- Playground areas
- Landscape buffer
- Woodland component
- A dog park
- Office space for staff
- Maintenance and storage buildings
- Concession stands(2 buildings)
- Parking
- Restrooms (2 buildings)

PROJECT SCOPE-FUTURE PHASES

- Community Center Complex
- A multi-purpose hall
- Softball diamonds
- Indoor Futsal Facilities
- Outdoor Soccer Fields
- Shower and locker room facilities.
- Maintenance Shop

CONSTRUCTION GRANT FUNDING FOR PHASE I

• Proposition 68 Grant	\$4,900,000
• Cal-Fire Grant	<u>\$ 400,000</u>
Total	\$5,300,000

Additional grant funding and in-kind
contributions will continue to be sought by
SEFCEDA

Construction Costs: Possible City Participation

- Allocate a portion of Park Development Fees Revenue collected from SE Fresno to pay for initial environmental and design costs.
- Waive City fees for building permits, plan checks and project inspection.
- Perform off-site improvements for this project as part of the Peach widening project.
- Review joint grant applications and administer

Maintenance and operations

- Paid Staffing and volunteers.
- Maintenance/repairs
- Marketing and promotions
- Electricity
- Water
- Insurance
- Community Garden
- Security
- Total Estimated Cost: \$420,000

ESTIMATED ANNUAL REVENUES

- **Soccer tournaments**
 - **rentals**
 - **Soccer academies**
 - **Concession stands**
 - **Concert Event at Fairground**
 - **Cash contributions**
 - **Donated services, materials and supplies**
 - **Water allocation to Com. Garden**
- Total Estimated Revenue: \$420,000**

PROPOSITION 68 REQUIREMENTS

- **Targets low income/disadvantaged communities.**
- **No local match required.**
- **Total \$ 650 million available statewide**
- **\$8.5 million maximum available per project**
- **Our application is \$4.9 million.**
- **Project must be operational upon conclusion**
- **Partnerships with community-based organizations are encouraged. Requires partnership agreement**
- **Future rounds of funding opportunities are likely.**
- **Application due August 5, 2019.**
- **Most environmental work must be completed/5 community meetings are required.**

SEFCEDA'S REQUEST

- **Authorize a City/SEFCEDA Partnership for the development and joint Filing of a \$4.9 million Proposition 68 Park Grant Application and a \$400,000 Cal-Fire Grant Application for the construction of Phase I of the Southeast Fresno Regional Park and Soccer Complex Project and direct City staff to explore ways to provide some seed funding for initial environmental and design costs and some initial transitional costs during the first three years of operations.**

SEFCEDA Request Continues

Our goal: This project becomes self-sufficient once it is fully operational.(3 years)Under management of SEFCEDA and its partners.