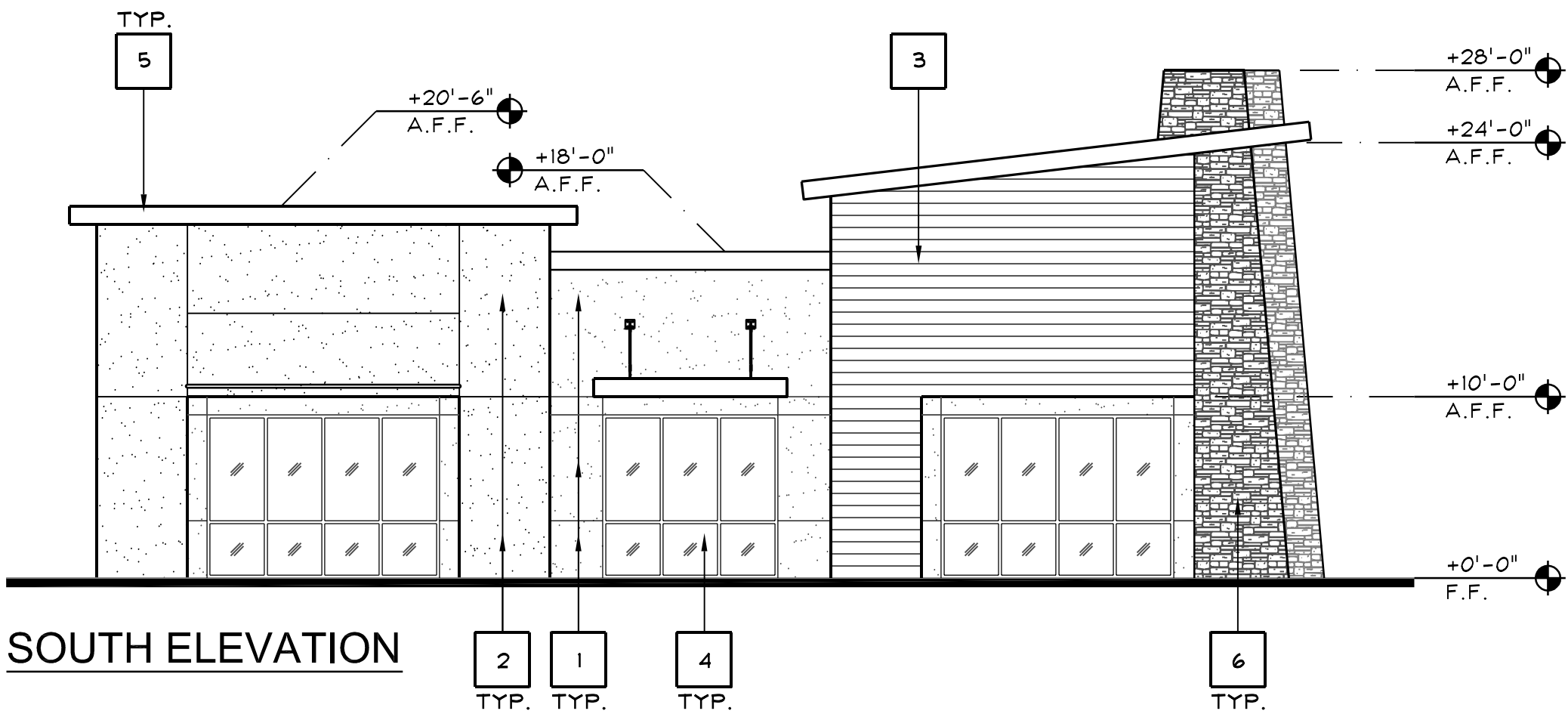
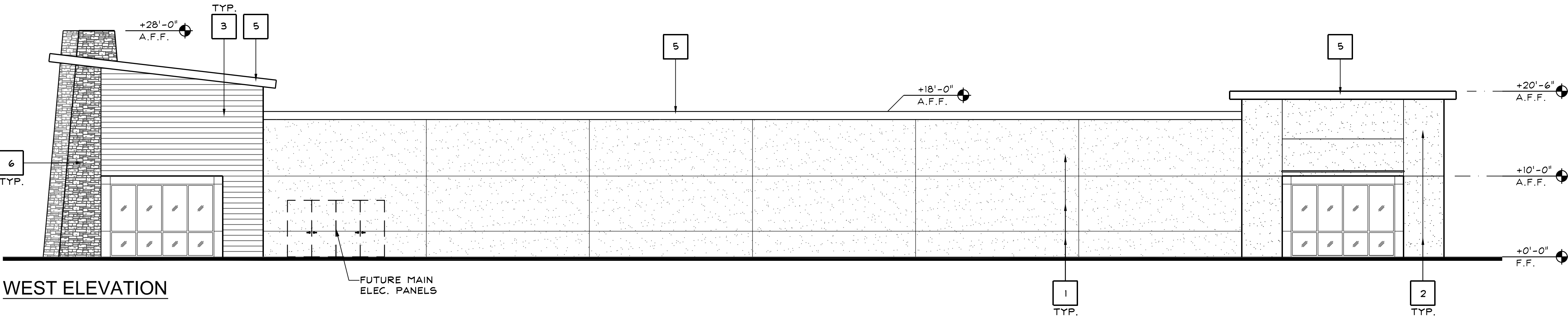


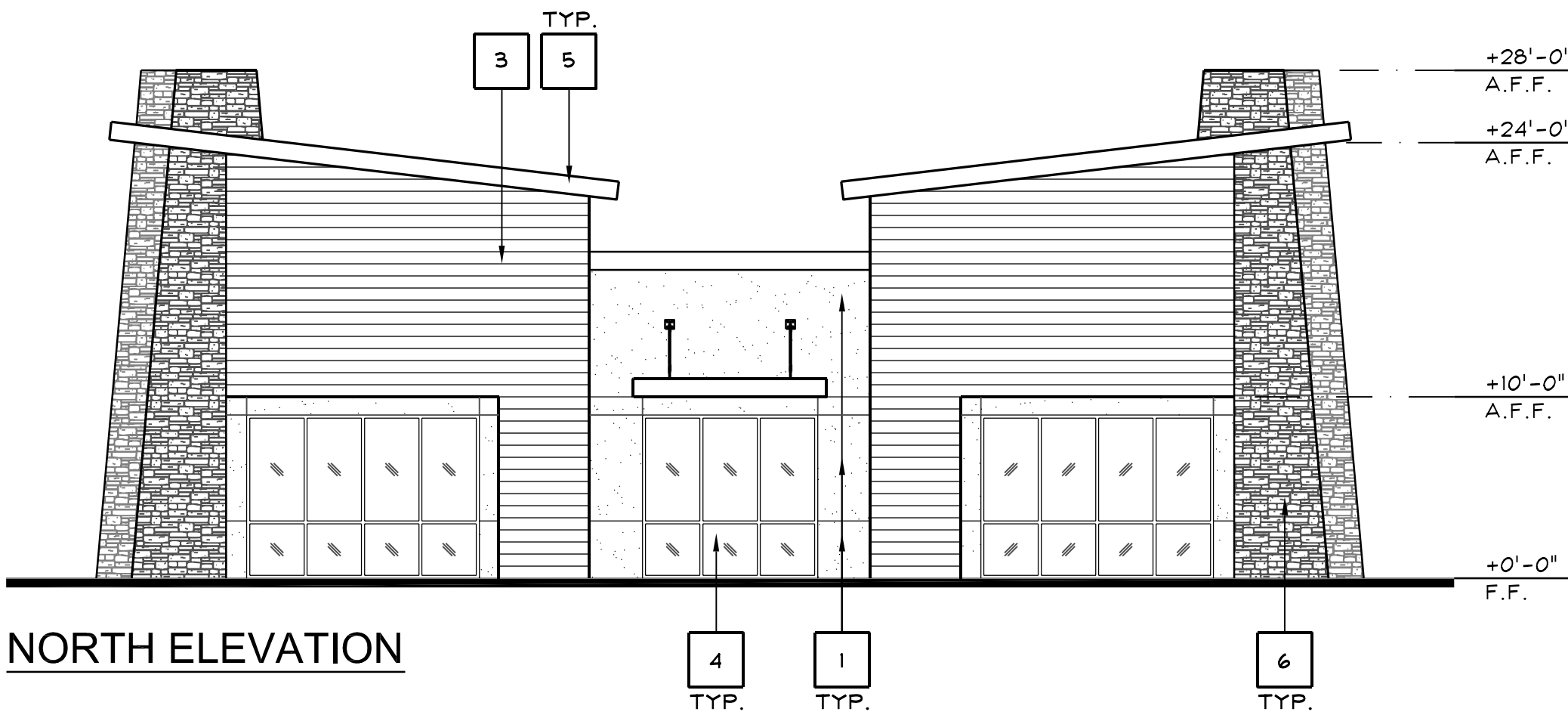
EAST ELEVATION



SOUTH ELEVATION



WEST ELEVATION



NORTH ELEVATION

KEYNOTES

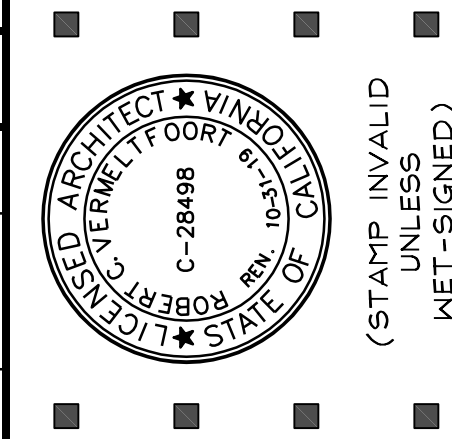
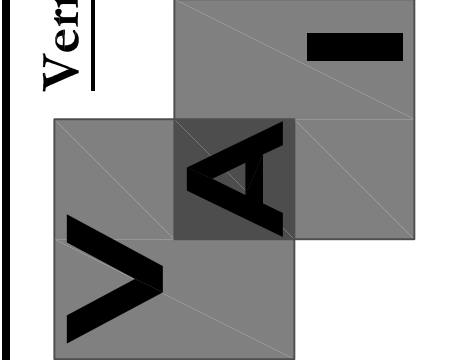
1

2

KEY	MATERIAL	COLOR / FINISH
1	7/8" EXTERIOR CEMENT PLASTER, ELASTOMERIC TOP COAT - FIELD	SHERWIN WILLIAMS #SW 6359 "SOCIALABLE"
2	7/8" EXTERIOR CEMENT PLASTER, ELASTOMERIC TOP COAT - ACCENT	SHERWIN WILLIAMS #SW 7001 "MARSHMALLOW"
3	CORRUGATED METAL PANEL	MBCI, 7.2 PANEL, SIGNATURE 300 COLOR: SILVER METALLIC
4	STOREFRONT & GLAZING	ANODIZED FRAMES & GLAZING TO BE CLEAR, NON-TINTED, NON-REFLECTIVE, DOUBLE GLAZED
5	PARAPET CAP	SHERWIN WILLIAMS #SW 7039 "VIRTUAL TAUPE"
6	STONE VENEER	ELDORADO STONE, CLIFFSTONE, "BARLEY"
7	-	-
8	METAL CANOPY	MATCH COLOR TO STOREFRONT FRAMES
-	-	-
-	-	-
-	-	-
-	-	-
-	-	-

1

Vermelfoort Architects, Inc.
Architecture and Planning
8525 North Cedar Avenue
Suite 106
Fresno, California 93720
Office: 559.432.6744
Fax: 559.432.6745



PROPOSED OFFICE
BUILDINGS
2471 E. FIR AVE.
FRESNO, CALIFORNIA 93720
PROPOSED ELEVATIONS (BUILDING 'A')

ISSUE DATE:	11-5-18
REV. DATE:	
PROJECT NO.:	18036
DRAWN BY:	NL
SHEET:	A300



SCALE: 1/8"=1'-0"

8

1

2

PROPOSED OFFICE BUILDINGS

2471 E. FIR AVE.

■ PROPOSED ELEVATIONS (BUILDING 'B')

Vermeltfoort Architects, Inc.
Architecture and Planning

Architecture and Planning

8525 North Cedar Avenue
Suite 106

Fresno, California 93720

Office: 559.432.6744
Fax: 559.432.6745

This document, the ideas and designs incorporated herein, are solely the property of VAI and is not to be used, in whole or in part for any project or duplication, without written authorization.

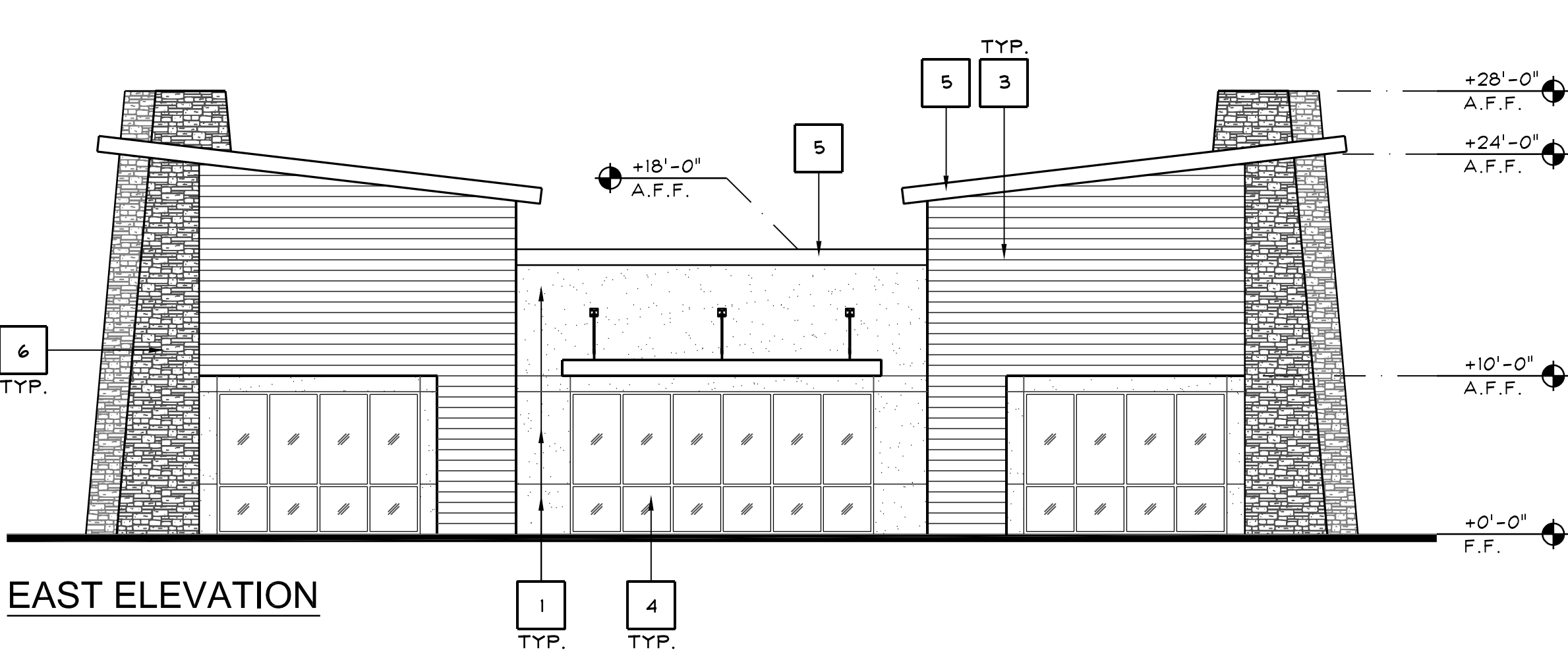
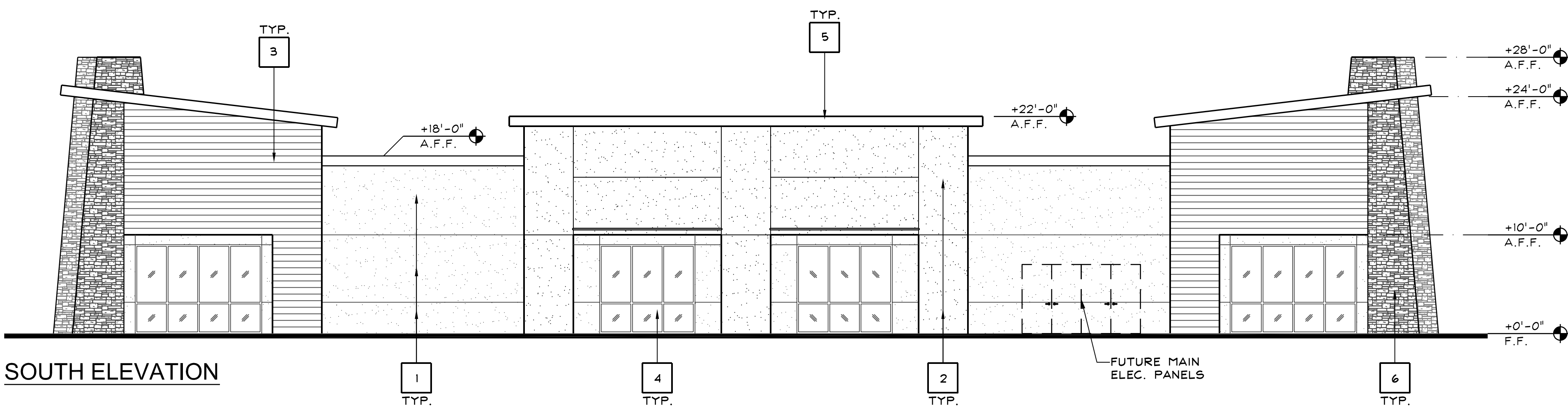
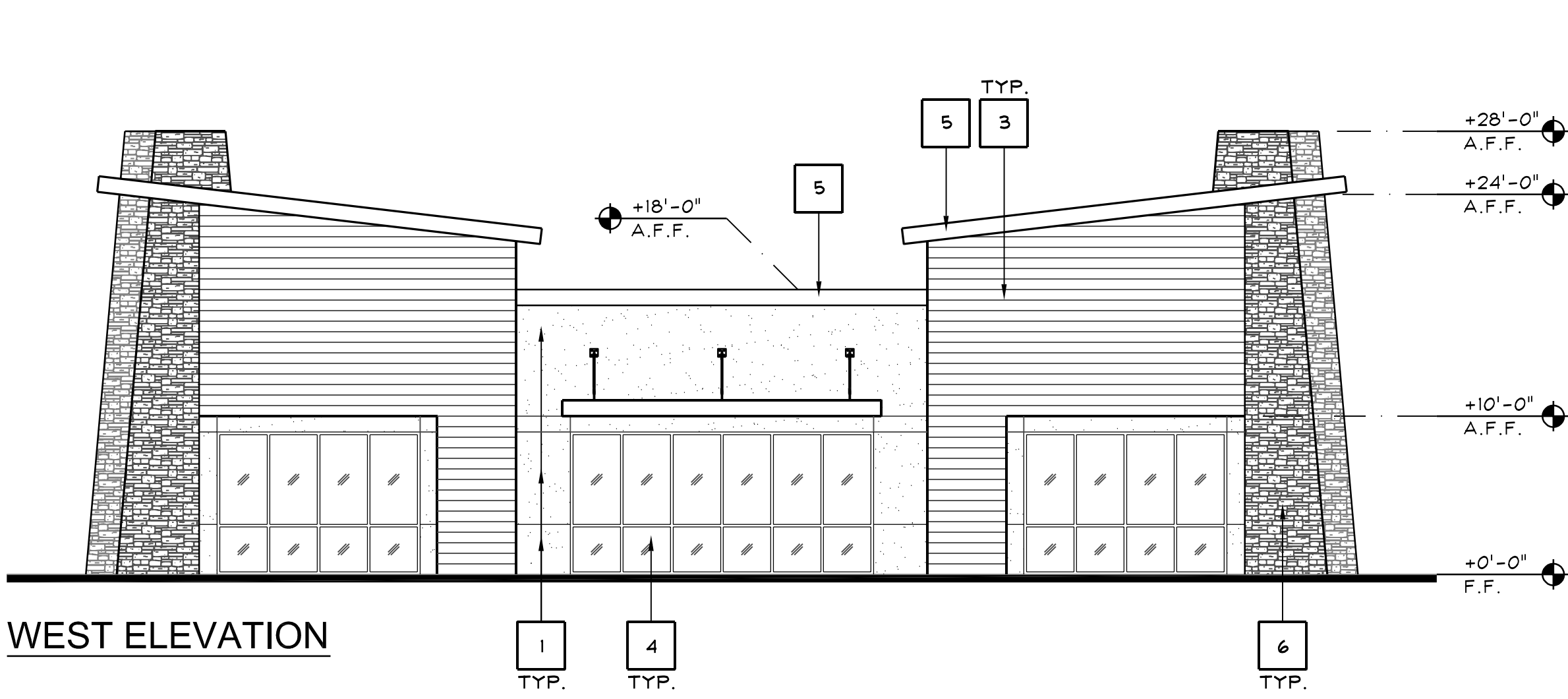
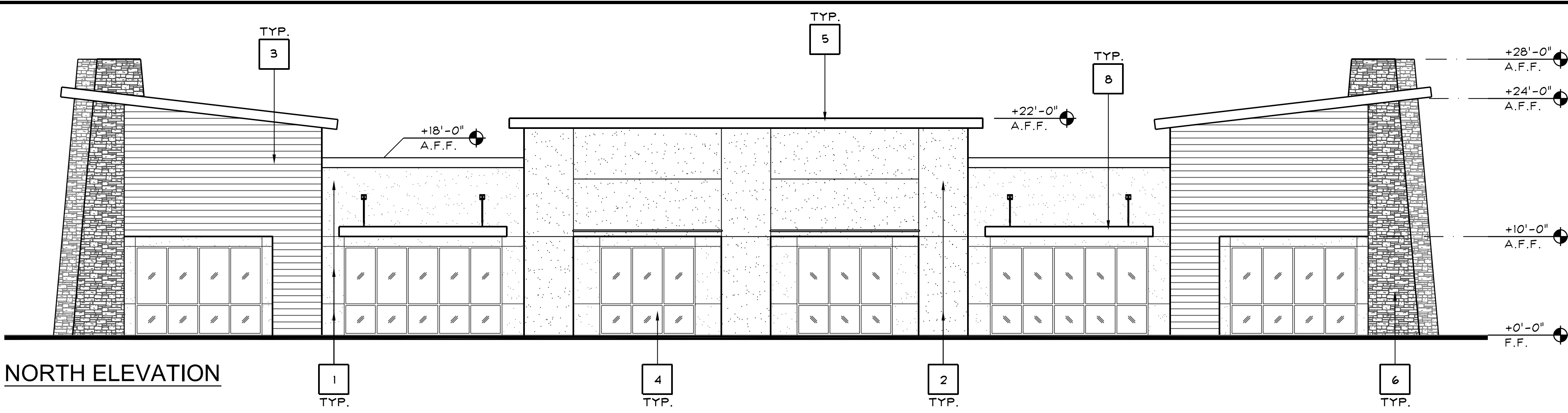
© COPYRIGHT 2018

© COPYRIGHT 201

(STAMP INVALID
UNLESS
WET-SIGNED)

ISSUE DATE:	11-5-18
REV. DATE:	
PROJECT NO.:	18036
DRAWN BY:	NL
SHEET:	

A300



PROPOSED ELEVATIONS - "BUILDING C"

SCALE: 1/8"=1'-0"

8

KEYNOTES

1

2

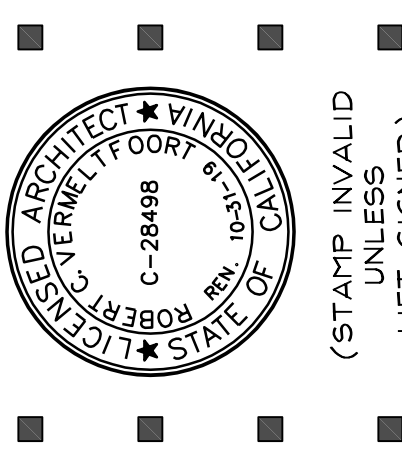
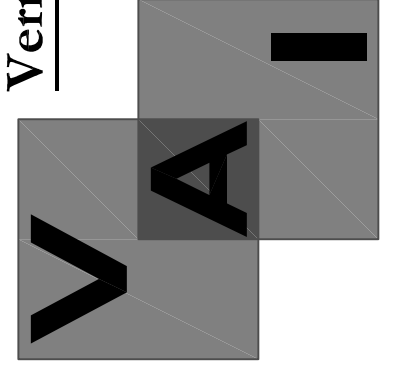
KEY	MATERIAL	COLOR / FINISH
1	7/8" EXTERIOR CEMENT PLASTER, ELASTOMERIC TOP COAT - FIELD	SHERWIN WILLIAMS #SW 6359 "SOCIALBLE"
2	7/8" EXTERIOR CEMENT PLASTER, ELASTOMERIC TOP COAT - ACCENT	SHERWIN WILLIAMS #SW 7001 "MARSHMALLOW"
3	CORRUGATED METAL PANEL	MBCI, 7.2 PANEL, SIGNATURE 300 COLOR: SILVER METALLIC
4	STOREFRONT & GLAZING	ANODIZED FRAMES & GLAZING TO BE CLEAR, NON-TINTED, NON-REFLECTIVE, DOUBLE GLAZED
5	PARAPET CAP	SHERWIN WILLIAMS #SW 7039 "VIRTUAL TAUPE"
6	STONE VENEER	ELDORADO STONE, CLIFFSTONE, "BARLEY"
7	-	-
8	METAL CANOPY	MATCH COLOR TO STOREFRONT FRAMES
-	-	-
-	-	-
-	-	-
-	-	-
-	-	-

REVISION	DATE
1	

This document, the ideas and designs incorporated herein, are solely the property of VAI and is not to be used, in whole or in part for any project or duplication, without written authorization.

© COPYRIGHT 2018

Vermelfoort Architects, Inc.
Architecture and Planning
8525 North Cedar Avenue
Suite 106
Fresno, California 93720
Office: 559.432.6744
Fax: 559.432.6745



PROPOSED OFFICE BUILDINGS
2471 E. FIR AVE.
FRESNO, CALIFORNIA 93720
PROPOSED ELEVATIONS (BUILDING 'C')

ISSUE DATE:	11-5-18
REV. DATE:	
PROJECT NO.:	18036
DRAWN BY:	NL
SHEET:	

A300

EXTERIOR FINISH SCHEDULE

4