

# McKinley-Armstrong No. 2

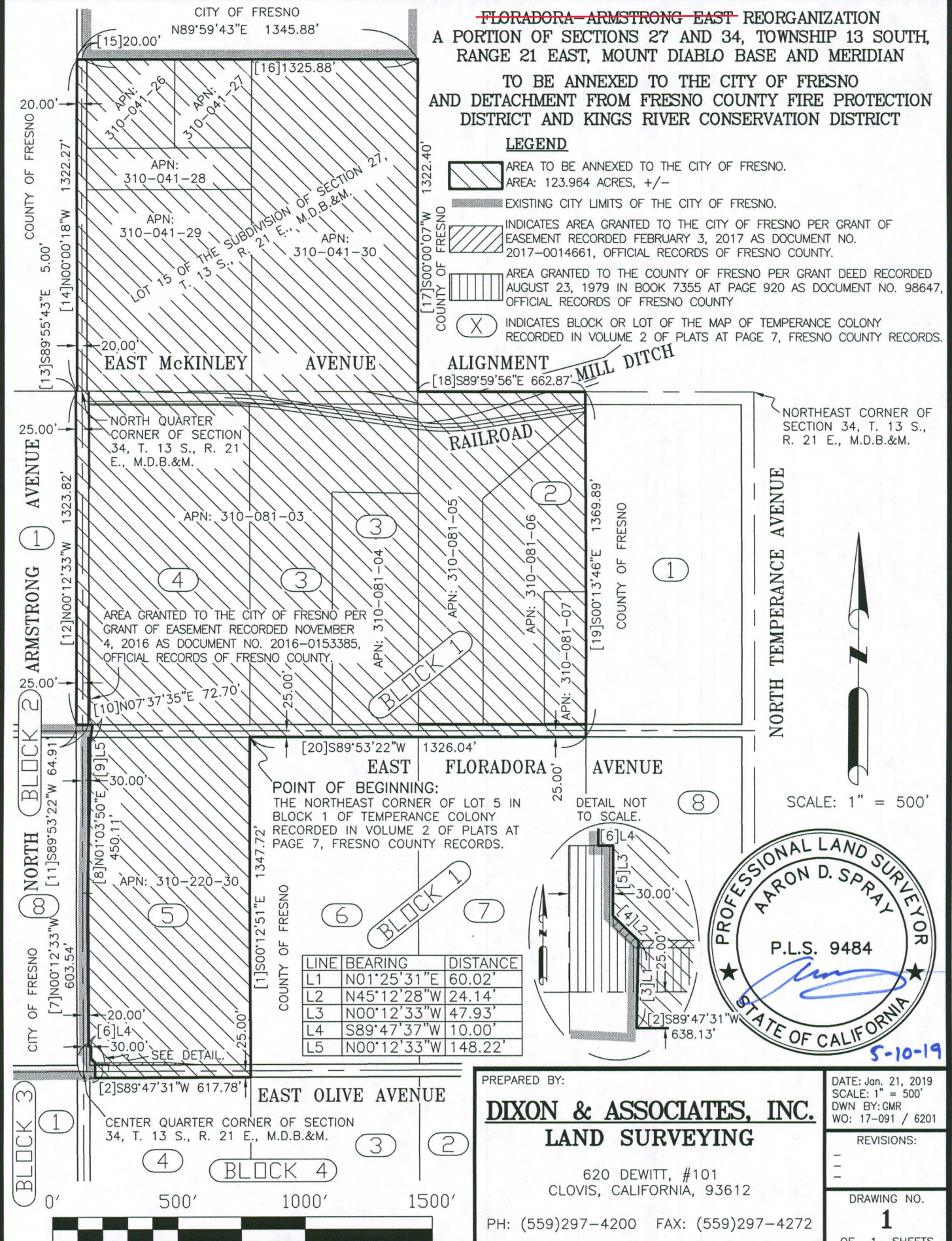
~~FLORADORA-ARMSTRONG EAST REORGANIZATION~~  
A PORTION OF SECTIONS 27 AND 34, TOWNSHIP 13 SOUTH,  
RANGE 21 EAST, MOUNT DIABLO BASE AND MERIDIAN  
TO BE ANNEXED TO THE CITY OF FRESNO  
AND DETACHMENT FROM FRESNO COUNTY FIRE PROTECTION  
DISTRICT AND KINGS RIVER CONSERVATION DISTRICT

## LEGEND

- AREA TO BE ANNEXED TO THE CITY OF FRESNO.  
AREA: 123.964 ACRES, +/-
- EXISTING CITY LIMITS OF THE CITY OF FRESNO.
- INDICATES AREA GRANTED TO THE CITY OF FRESNO PER GRANT OF EASEMENT RECORDED FEBRUARY 3, 2017 AS DOCUMENT NO. 2017-0014661, OFFICIAL RECORDS OF FRESNO COUNTY.
- AREA GRANTED TO THE COUNTY OF FRESNO PER GRANT DEED RECORDED AUGUST 23, 1979 IN BOOK 7355 AT PAGE 920 AS DOCUMENT NO. 98647, OFFICIAL RECORDS OF FRESNO COUNTY
- INDICATES BLOCK OR LOT OF THE MAP OF TEMPERANCE COLONY RECORDED IN VOLUME 2 OF PLATS AT PAGE 7, FRESNO COUNTY RECORDS.

## ALIGNMENT

MILL DITCH



PREPARED BY:

**DIXON & ASSOCIATES, INC.**  
**LAND SURVEYING**

620 DEWITT, #101  
CLOVIS, CALIFORNIA, 93612

PH: (559)297-4200 FAX: (559)297-4272

DATE: Jan. 21, 2019  
SCALE: 1" = 500'  
DWN BY: GMR  
WO: 17-091 / 6201

REVISIONS:

DRAWING NO.

**1**

OF 1 SHEETS