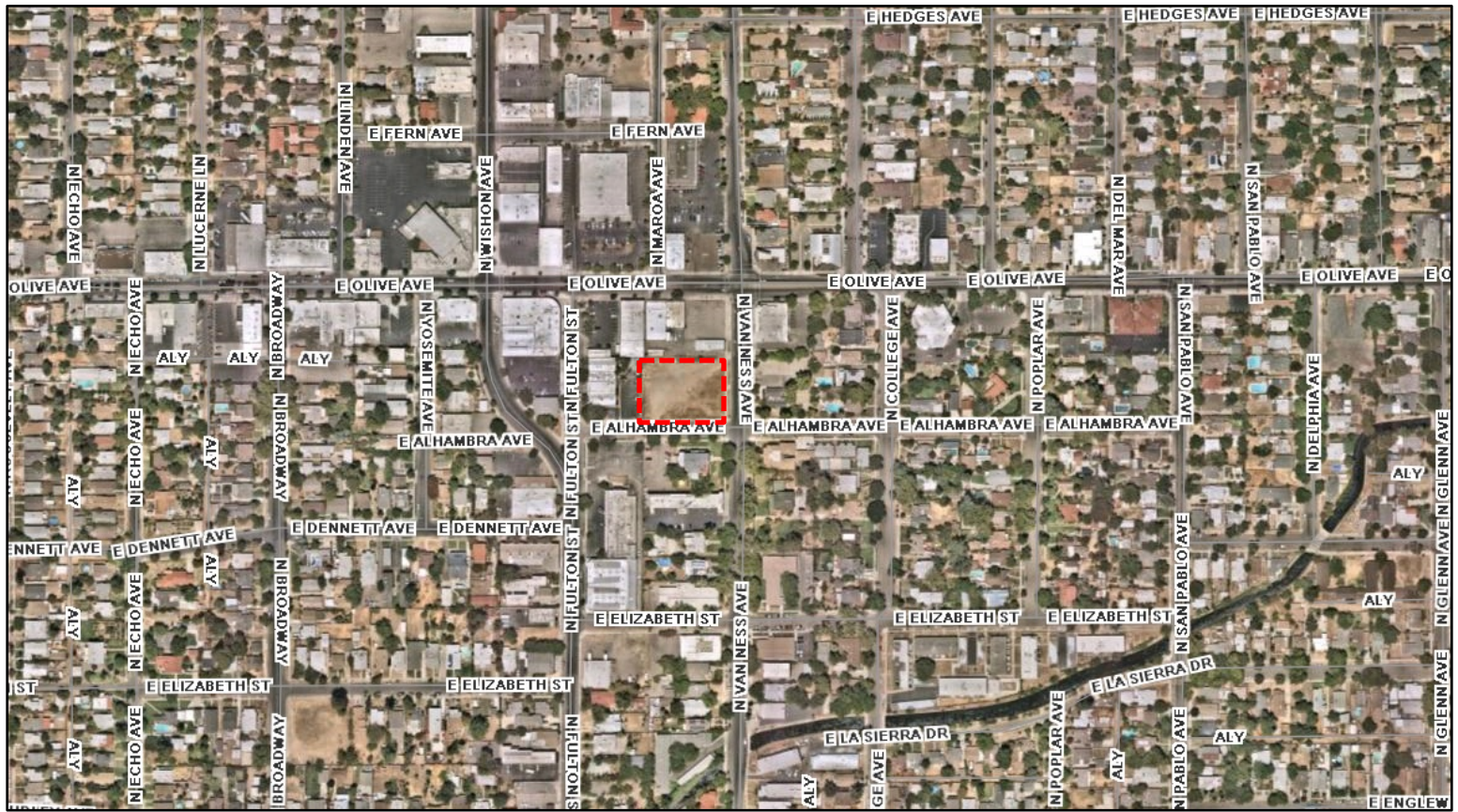


## Exhibit C

## AERIAL MAP



## PLANNING AND DEVELOPMENT DEPARTMENT

## Application

Vesting Tentative Tract Map No. T-6333

**Zone District**

CMS (Commercial Main Street)



## LEGEND

**T-6333**

±0.74 acres



**APN:**

452-041-05

971 E Alhambra Avenue

NWC of E Alhambra & N Van Ness Avenues

## Land Use Designation

Commercial Main Street