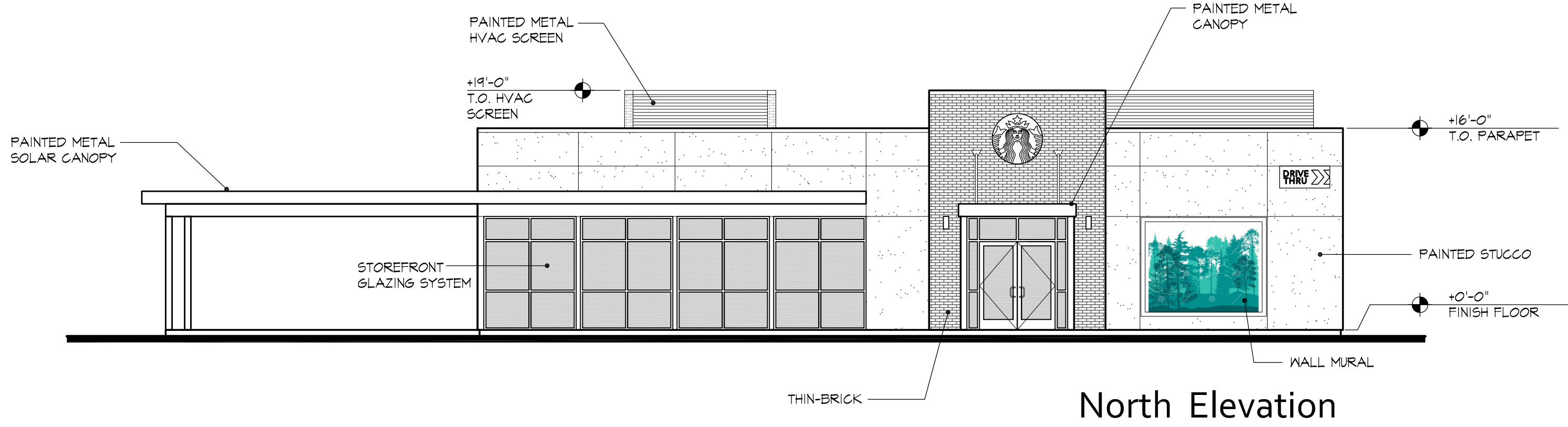
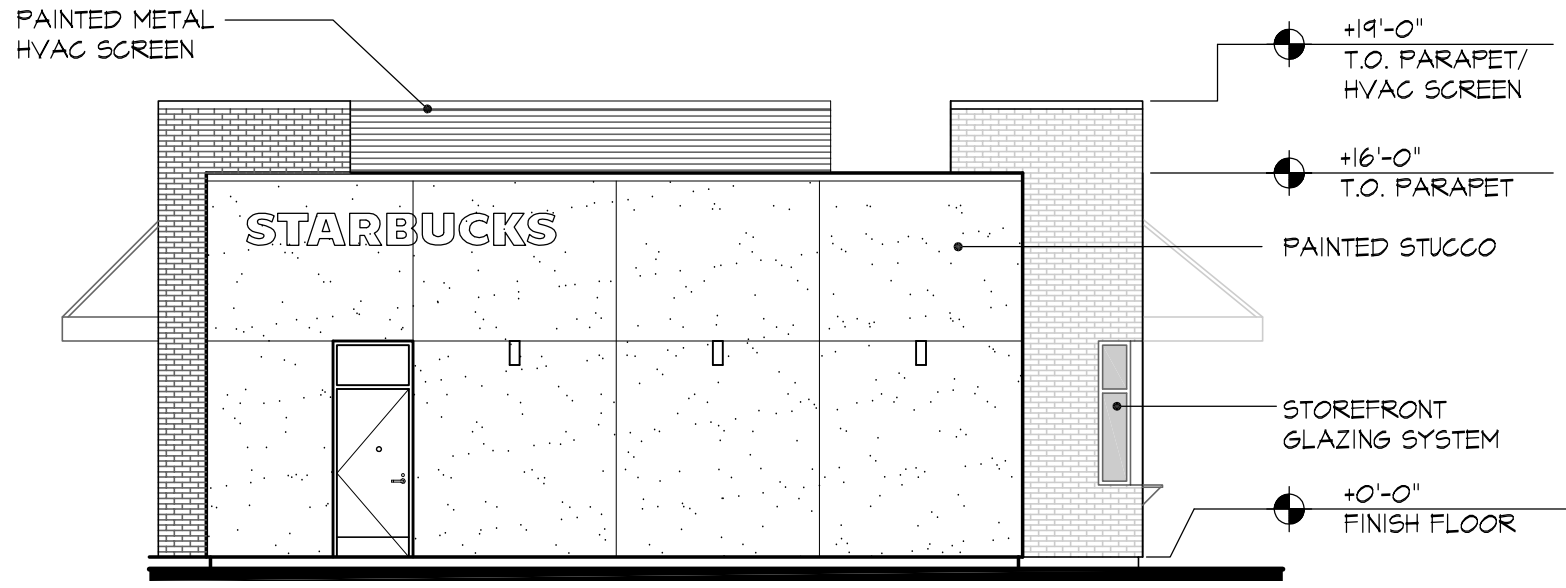


**EXHIBIT F**  
**Project Elevations**

ALL DESIGN, PRELIMINARY, AND PLANS INDICATED OR REPRESENTED BY THIS DRAWING ARE OWNED BY AND THE PROPERTY OF IT ARCHITECTURE, INC. NO REPRODUCTION OR COPIES ARE TO BE MADE OR USED IN CONNECTION WITH ANY OTHER PROJECT WITHOUT THE WRITTEN PERMISSION OF IT ARCHITECTURE, INC. THESE DRAWINGS OR SPECIFICATIONS AT ANY PUBLIC ASSEMBLY IS NOT PUBLICATION OF BATE AND NO COPY IS TO BE REPRODUCED OR COPIED WITHOUT THE WRITTEN PERMISSION OF IT ARCHITECTURE, INC.



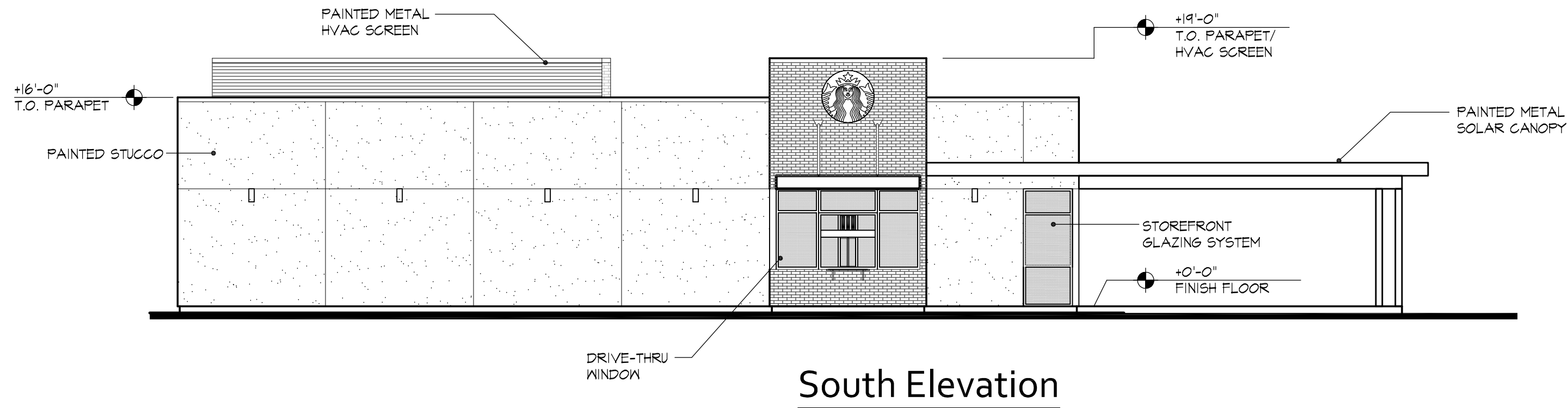
North Elevation



West Elevation



East Elevation



South Elevation

Exterior Elevation Keyed Notes

- ① INDICATES 3-COAT STUCCO FINISH OVER SHEATHING. PROVIDE EXPANSION JOINTS WHERE SHOWN AND 65M. KEEP SCAFFOLD AT BASE. TYP. PROVIDE PAPER-BACKED WIRE MESH AND AN ADDITIONAL LAYER OF TYPE 'D' PAPER OVER SHEATHING. FINISH PER COLOR / MATERIAL SCHEDULE.
- ② INDICATES ALUMINUM STOREFRONT SYSTEM. (KAWNEER 'TRI-FAB' 451 SERIES 2' x 4 1/2')
- ③ INDICATES LOCATION OF DUAL-PANE GLAZING PANEL(S).
- ④ INDICATES 65M EXPANSION JOINT - PROVIDE 'STOCKTON PRODUCTS' #1800BLE-VEE OR EQUAL. PAINT (2) COATS ENAMEL TO MATCH ADJACENT STUCCO FINISH.
- ⑤ INDICATES HOLLOW-METAL DOOR(S) AND FRAME(S) - REFER TO DOOR SCHEDULE FOR ADDITIONAL INFORMATION. FINISH PER COLOR / MATERIAL SCHEDULE.
- ⑥ INDICATES 65M PARAPET CAP. REFER TO DETAILS FOR ADDITIONAL INFORMATION. FINISH PER COLOR / MATERIAL SCHEDULE.
- ⑦ INDICATES LOCATION OF FUTURE GAS METERS - REFER TO PLUMBING PLANS FOR ADDITIONAL INFORMATION. PAINT (2) COATS ENAMEL TO MATCH ADJACENT STUCCO FINISH. FINISH PER COLOR / MATERIAL SCHEDULE.
- ⑧ INDICATES PROPOSED SIGNAGE LOCATION. FINAL LOCATION AND TYPE TO BE DECIDED AT TIME OF TENANT IMPROVEMENT. SEE ELECTRICAL FOR ADDITIONAL INFORMATION.
- ⑨ THIN-BRICK FINISH 6" / 156 1/2" CONCRETE BOARD. SUBSTRATE 6" LAYER OF 30# FELT 6" SHEATHING TYPICAL. U.O.A. REFER TO PLANS FOR FURRING, FRAMING AND TOP OUT ELEMENTS. SEE COLOR MATERIALS SCHEDULE FOR SPECIFIC COLOR AND DETAIL(S) FOR ADDITIONAL INFORMATION AND REQUIREMENTS.
- ⑩ SOLDIER COURSE ACCENT WITH PAVER UNITS (3-5/8" X 7-1/8"). REFER TO DETAIL FOR ADDITIONAL INFORMATION.
- ⑪ BRICK CORNER PIECE. REFER TO DETAIL FOR ADDITIONAL INFORMATION.
- ⑫ ROOF OVERFLOW DOWN LINE TO DAYLIGHT ABOVE GRADE. PAINT ALL EXPOSED MATERIAL (2) COATS ENAMEL (INCLUDING INTERIOR SURFACE) TO MATCH ADJACENT FINISH COLOR.
- ⑬ SURFACE MOUNTED LIGHT FIXTURE. REFER TO ELECTRICAL PLANS FOR ADDITIONAL INFORMATION.
- ⑭ STEEL CANOPY. REFER TO COLOR / MATERIAL SCHEDULE AND DETAILS FOR ADDITIONAL INFORMATION.
- ⑮ INDICATES PAINTED METAL PANEL TRANSOM.
- ⑯ OPERATION WINDOW / READY ACCESS MODEL (B) PASS THRU AIR CURTAIN SYSTEM. REFER TO ELECTRICAL / MECHANICAL DRAWINGS AND DETAIL FOR ADDITIONAL INFORMATION.
- ⑰ STREET ADDRESS NUMERALS LOCATED SO AS TO BE PLAINLY VISIBLE FROM THE STREET OR ROAD. NUMBERS TO BE CLEAR ANODIZED ALUMINUM FINISH (12" HIGH HELVETICA BOLD FONT).
- ⑱ INDICATES 2'-0" WIDE STOREFRONT WINDOW PER FLOOR PLAN. HEIGHT TO MATCH STARBUCKS OPERATION WINDOW / READY ACCESS PASS THRU.
- ⑲ INDICATES LOCATION OF FIRE RISER ACCESS DOOR IN SILL @ +2'-0" - PAINT (2) COATS ENAMEL TO MATCH ADJACENT BRICK FINISH. FINISH PER COLOR / MATERIAL SCHEDULE. GO TO VERIFY SIZE AND PLACEMENT WITH SPRINKLER SUB.
- ⑳ THIN-BRICK EXPANSION JOINT. REFER TO DETAIL FOR ADDITIONAL INFORMATION.
- ㉑ INDICATES 1" REVEAL. REFER TO DETAIL FOR ADDITIONAL INFORMATION.
- ㉒ INDICATES LOCATION OF FURRED WALL ELEMENT TYPICAL - REFER TO SOFFIT PLAN FOR ADDITIONAL INFORMATION AND REQUIREMENTS.
- ㉓ INDICATES FIRE DEPARTMENT CONNECTION.

Keyed Color / Material Schedule

City Use Only

APPL. NO. P22-02534 EXHIBIT E DATE 10/4/2022

PLANNING REVIEW BY \_\_\_\_\_ DATE \_\_\_\_\_

TRAFFIC ENG. \_\_\_\_\_ DATE \_\_\_\_\_

APPROVED BY \_\_\_\_\_ DATE \_\_\_\_\_

CITY OF FRESNO DARM DEPT

6-16-2022

Exterior Elevations

it

ARCHITECTURE

1465 North Van Ness Avenue  
Fresno, California 93728  
559.442.4642 voice  
559.485.9081 fax

Project

New Shell Building + Site Development  
Tulare and R St.  
Fresno, California 93721

Owner

MB Developers, LLC  
416 E. South Avenue  
Fowler, California 93625

Publishing Status

Schematic

DATE

Design Developm't.

DATE

Site Plan Review

DATE

Bidding

DATE

Plan Check

DATE

Revisions

Scale

1/8"=1'-0"

Project Manager

MARK GANDER

Project Number

22-011

Sheet

A-3.0