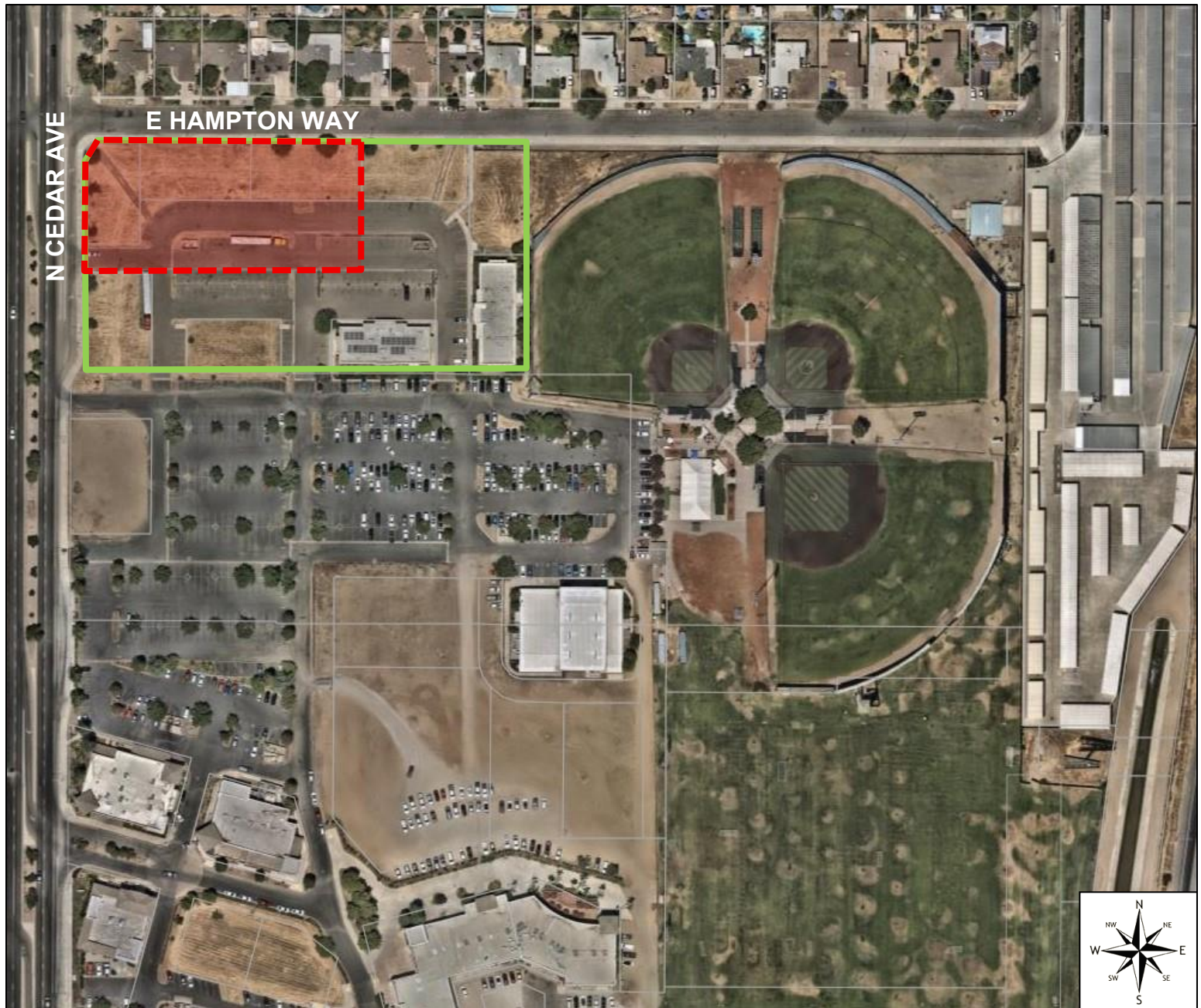


## Exhibit B

# AERIAL PHOTOGRAPH



## PLANNING AND DEVELOPMENT DEPARTMENT

### Application

Rezone Application No. P25-01778  
Development Permit Application No.  
P25-01774

### APN(s):

438-220-01, 02, 03, 04, 05, 06, 07, 08, 09, 10

Southeast corner of East Hampton Way and  
North Cedar Avenue

### Zone District

O/cz (Office/conditions of zoning)

### Land Use Designation

Employment – Office

## LEGEND



**Rezone Boundary**  
±3.96 acres



**Development Boundary**  
±1.17 acres