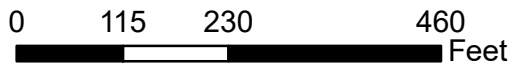
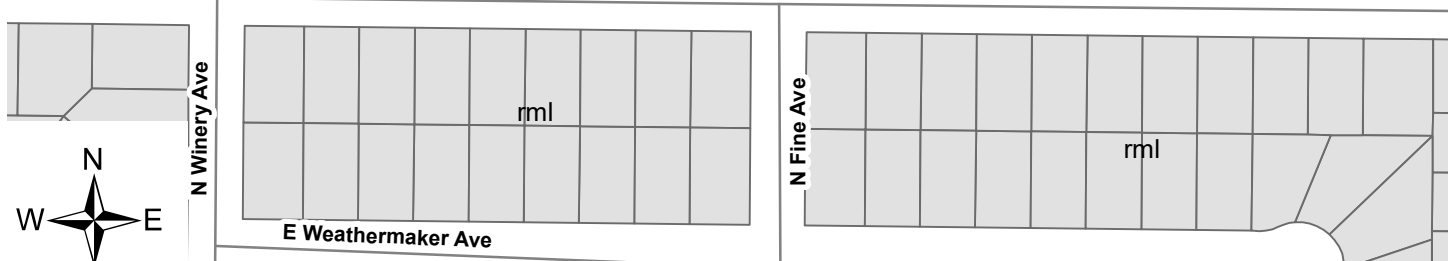
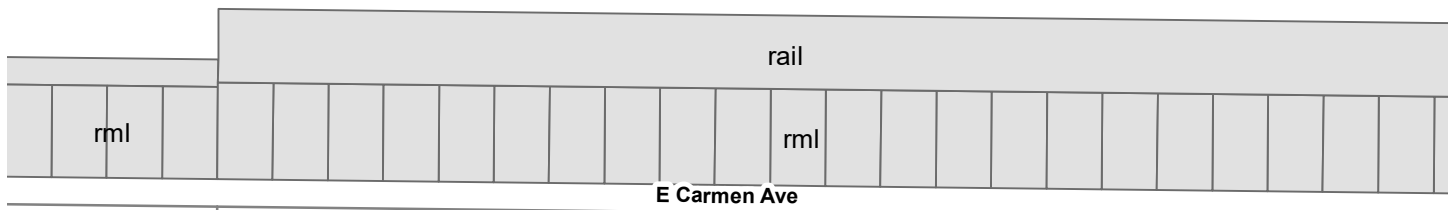


Exhibit D – Zoning Diagram

EXHIBIT A- Rezone



P24-00589

APN(s):494-291-05 & 494-291-10

Northwest Corner of E McKinley and N Fine Ave



Proposes to rezone approximately 2.26 acres from IL (light industrial) zone district to the CC (Community Commercial) zone district, consistent with the land use designation for the General Plan Amendment.