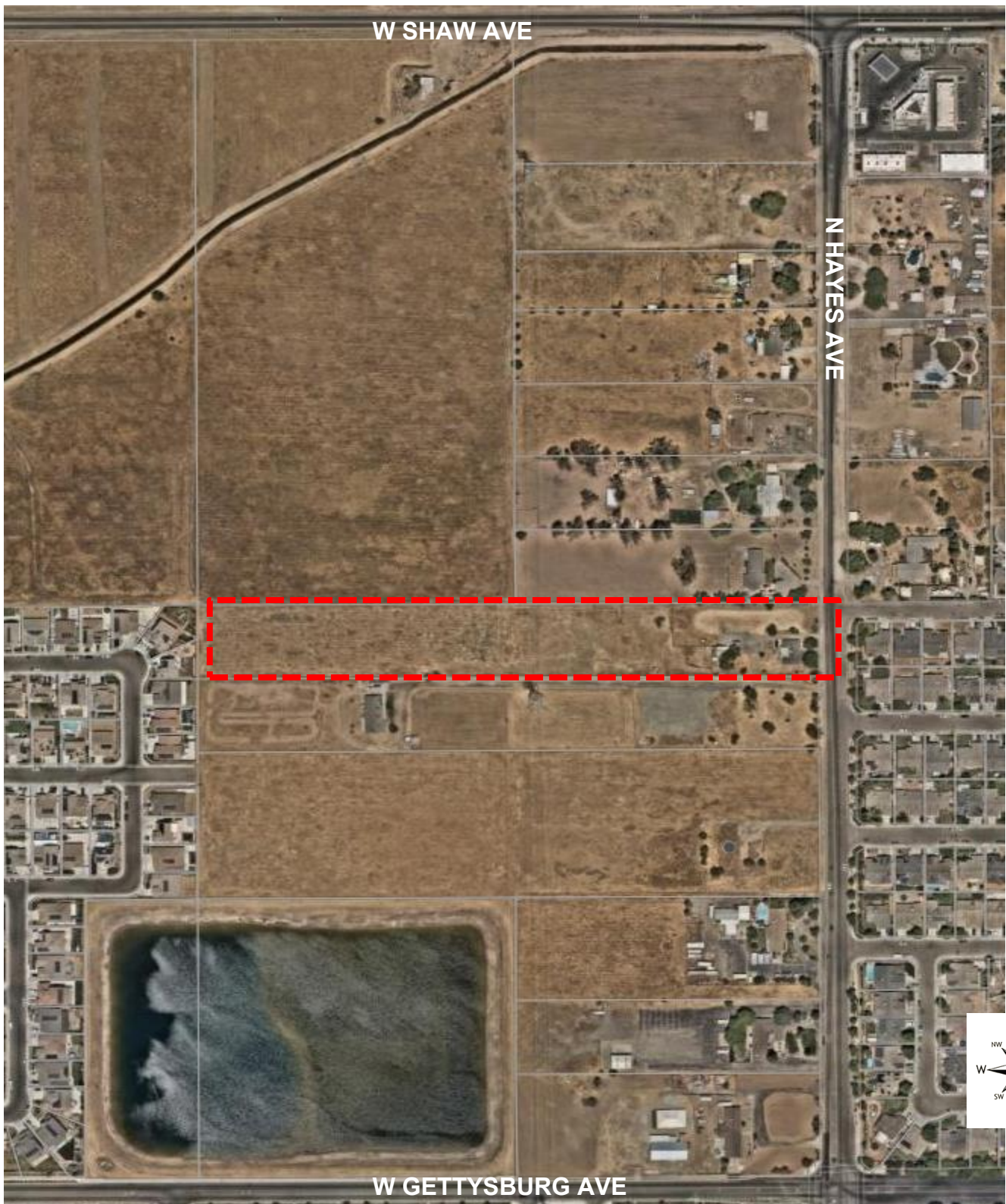


Exhibit C

AERIAL MAP



PLANNING AND DEVELOPMENT DEPARTMENT

Application

Vesting Tentative Tract Map No. 6443

APN:

512-032-13

West side of North Hayes Avenue, between
West Shaw and West Gettysburg Avenues

Zone District

RS-5 (Residential Single-Unit, Medium
Density)

Land Use Designation

Medium Density Residential



LEGEND

T-6443

±1.32 acres