

Exhibit C-2 – Project Elevations Renderings

Costco Commercial Center Project

Conditional Use Permit Application No. P21-01959

Plan Amendment and Rezone Application No. P21-01960

Conditional Use Permit Application No. P21-03251

Planned Development Permit Application No. P21-03252

7120 North Riverside Drive Fresno, CA 93722

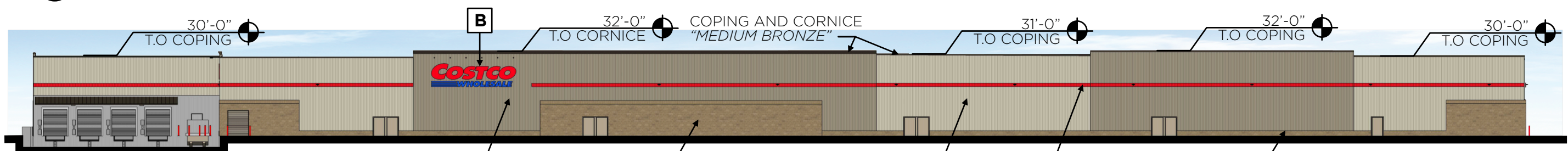
APN: 503-020-12



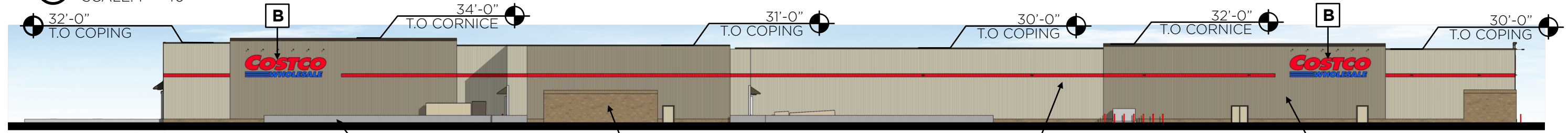
1 WEST ELEVATION
SCALE: 1" = 40'



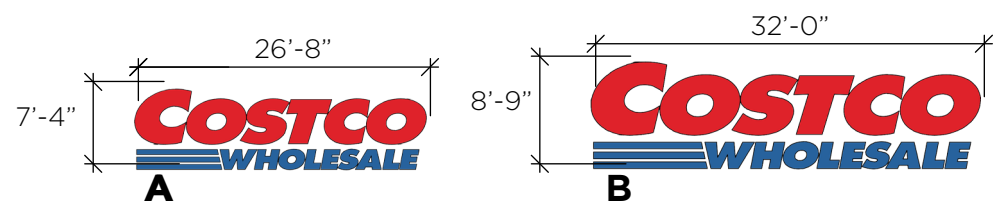
2 NORTH ELEVATION
SCALE: 1" = 40'



3 EAST ELEVATION
SCALE: 1" = 40'



4 SOUTH ELEVATION
SCALE: 1" = 40'

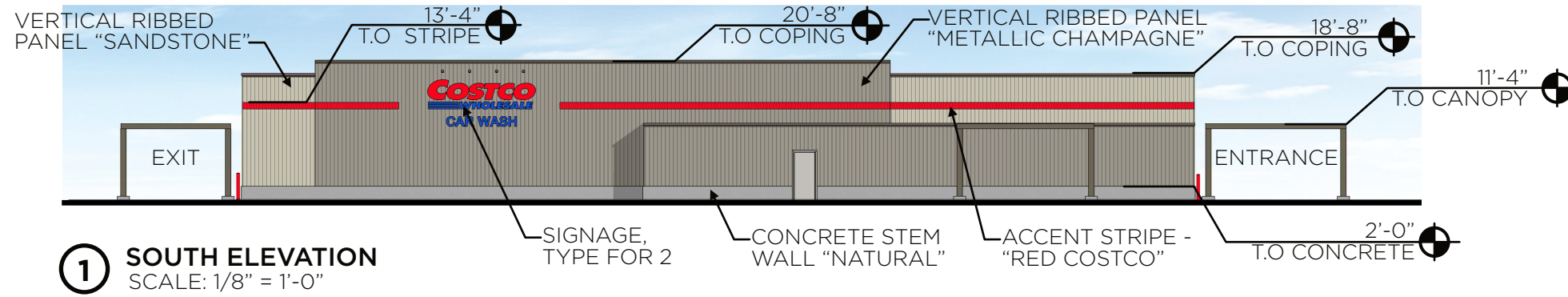


5 SIGN PACKAGE

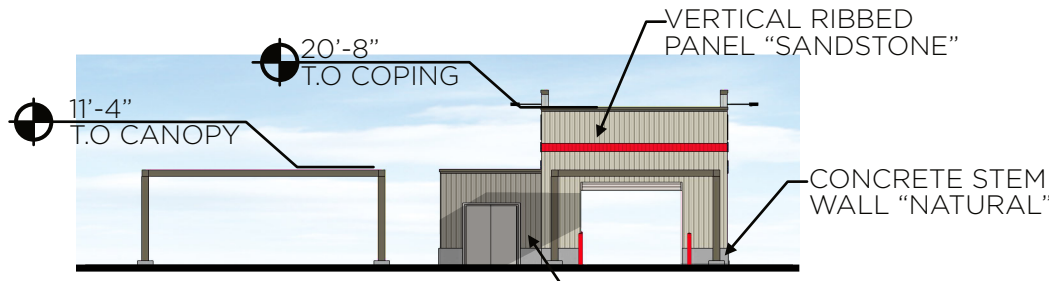
SIGN TABLE						
IDENTITY	QUANTITY	SIGN	SIZE	AREA (EACH)	TOTAL SF	
A	1	COSTCO WHOLESALE	5'-0" C	175 SF	175 SF	
B	3	COSTCO WHOLESALE	6'-0" C	280 SF	840 SF	
TOTAL SIGN AREA:					998 SF	



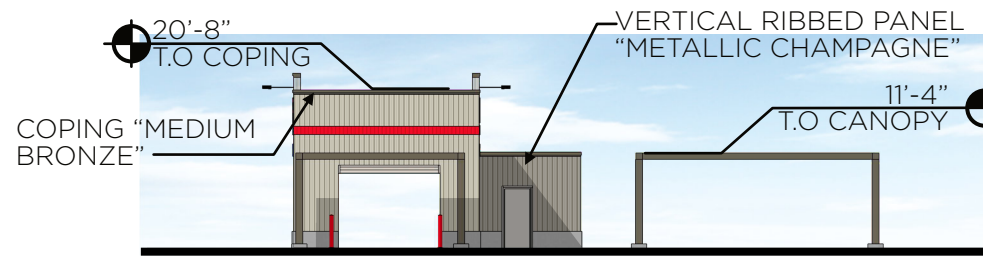
6 ENTRY CANOPY ELEVATION



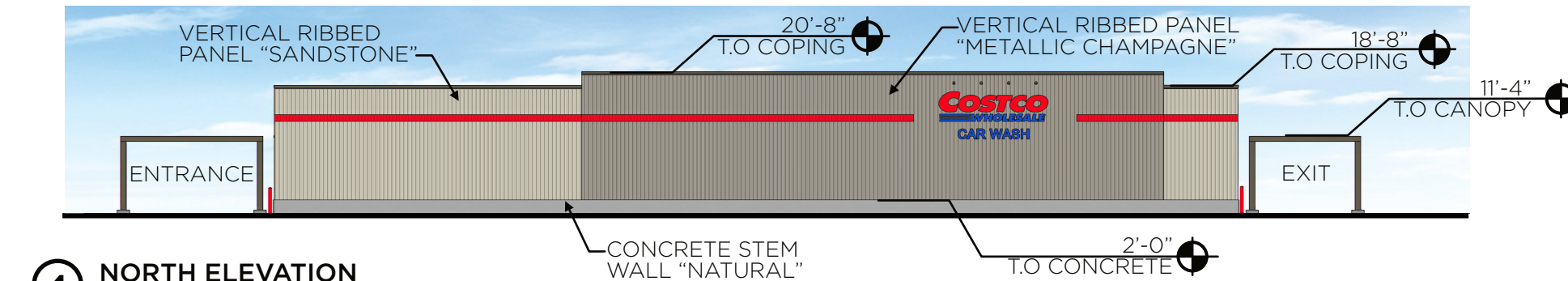
1 SOUTH ELEVATION
SCALE: 1/8" = 1'-0"



2 EAST ELEVATION
SCALE: 1/8" = 1'-0"



3 WEST ELEVATION
SCALE: 1/8" = 1'-0"



4 NORTH ELEVATION
SCALE: 1/8" = 1'-0"

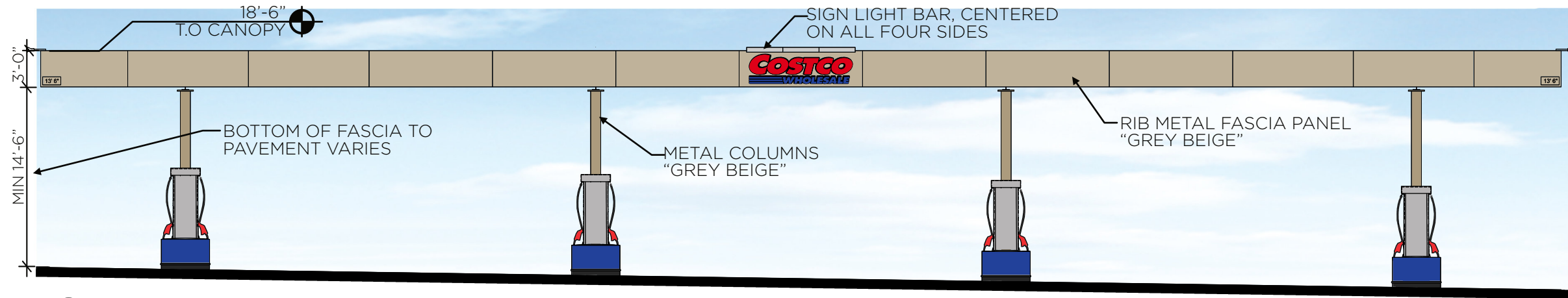
SIGN TABLE

QUANTITY	SIGN	SIZE	AREA (EACH)	TOTAL SF
2	COSTCO WHOLESALE	3'-6" x 10'-6"	37 SF	74 SF

TOTAL SIGN AREA: **74 SF**



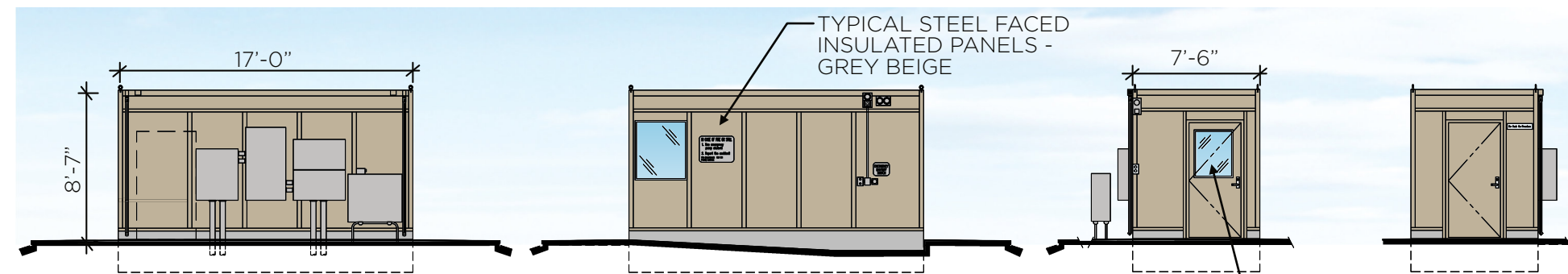
5 SIGNS
SCALE: 1/4" = 1'-0"



1 EAST/ WEST ELEVATION
SCALE: 1/8" = 1'-0"



2 NORTH/ SOUTH ELEVATION
SCALE: 1/8" = 1'-0"



4 CONTROLLER ENCLOSURE ELEVATIONS
SCALE: 1/8" = 1'-0"

SIGN TABLE				
QUANTITY	SIGN	SIZE	AREA (EACH)	TOTAL SF
4	COSTCO WHOLESALE	2'-5" x 8'-6"	21 SF	84 SF
TOTAL SIGN AREA:				84 SF



5 CANOPY SIGNS
SCALE: 1/4" = 1'-0"