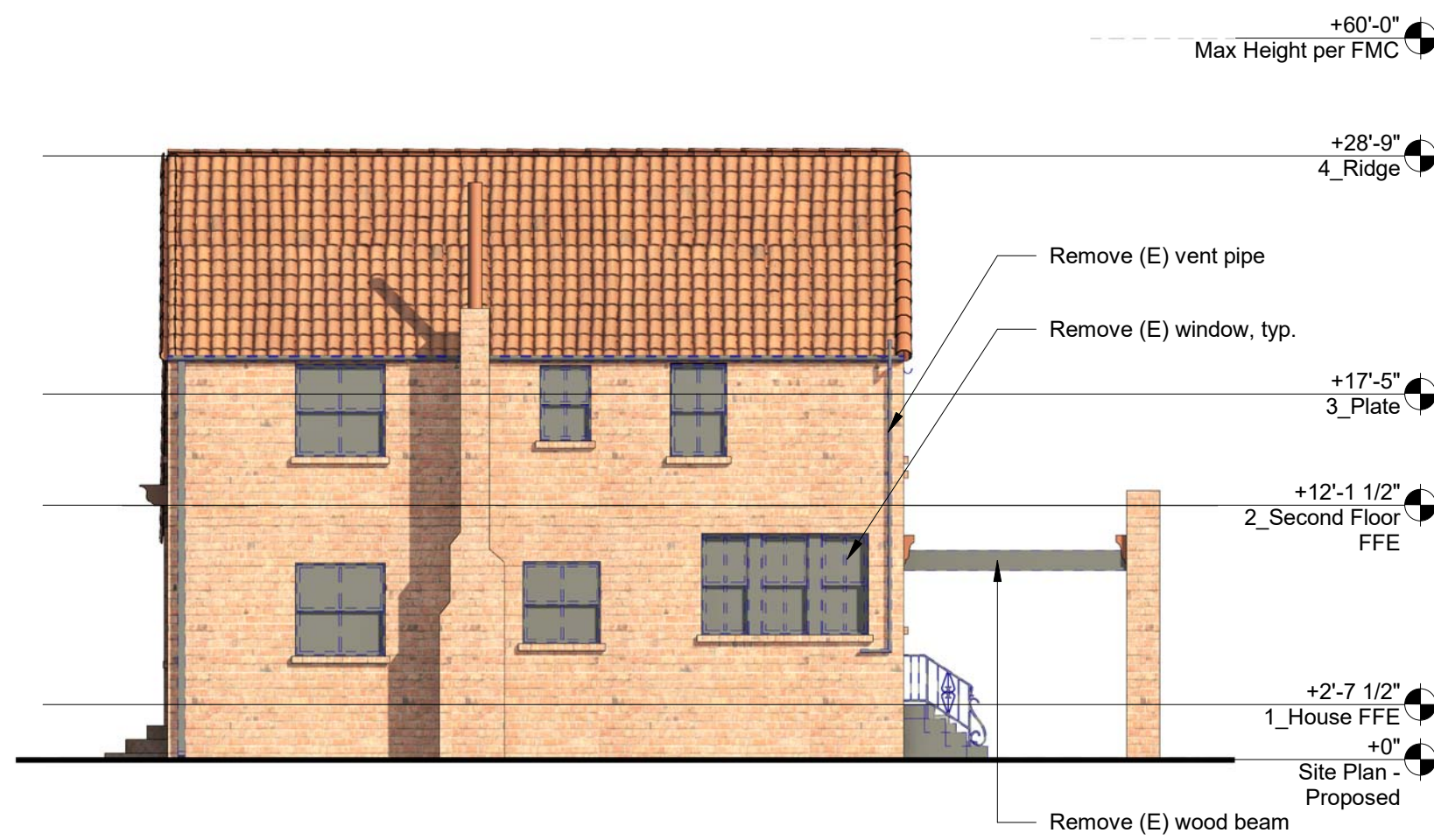
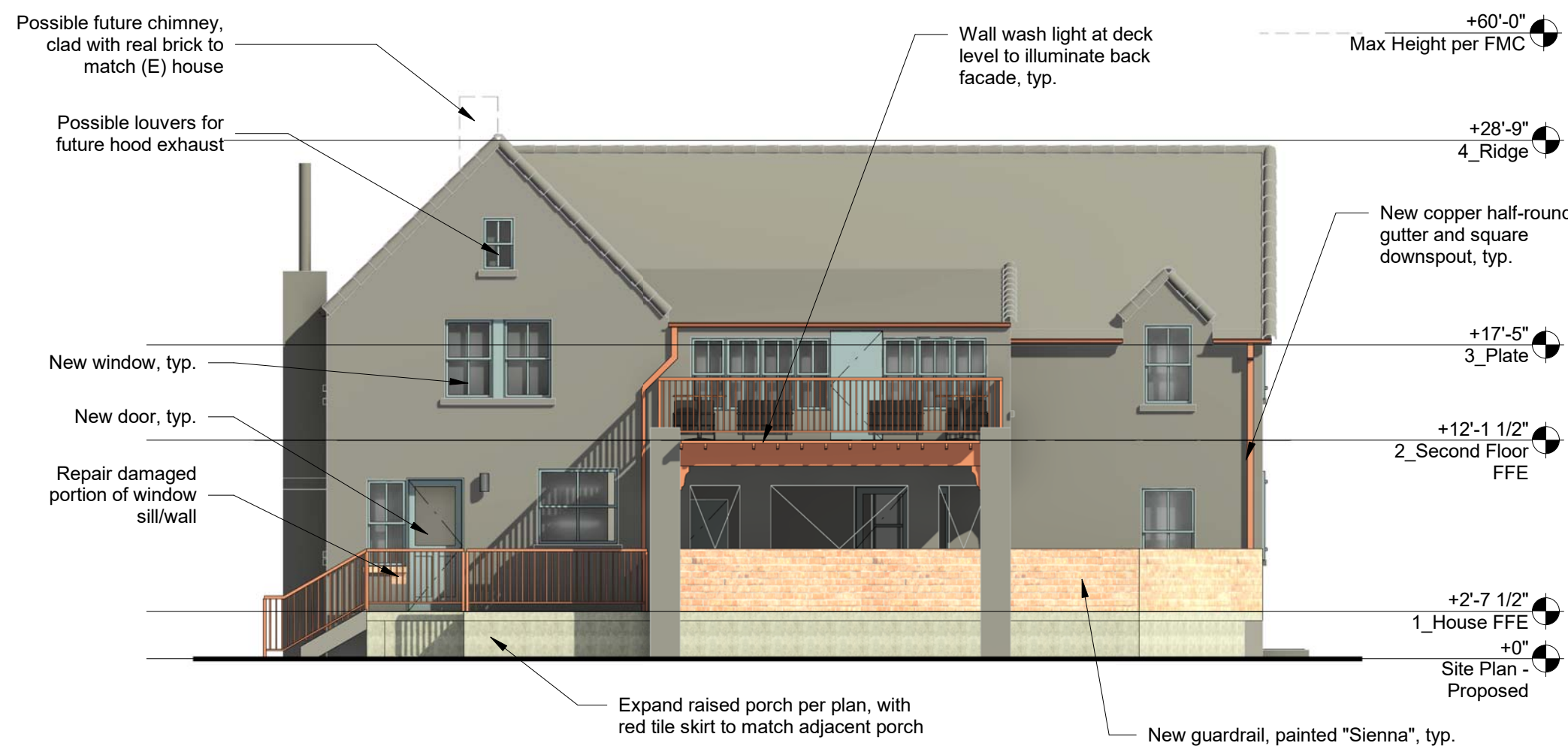


8 North - Proposed
1/8" = 1'-0"



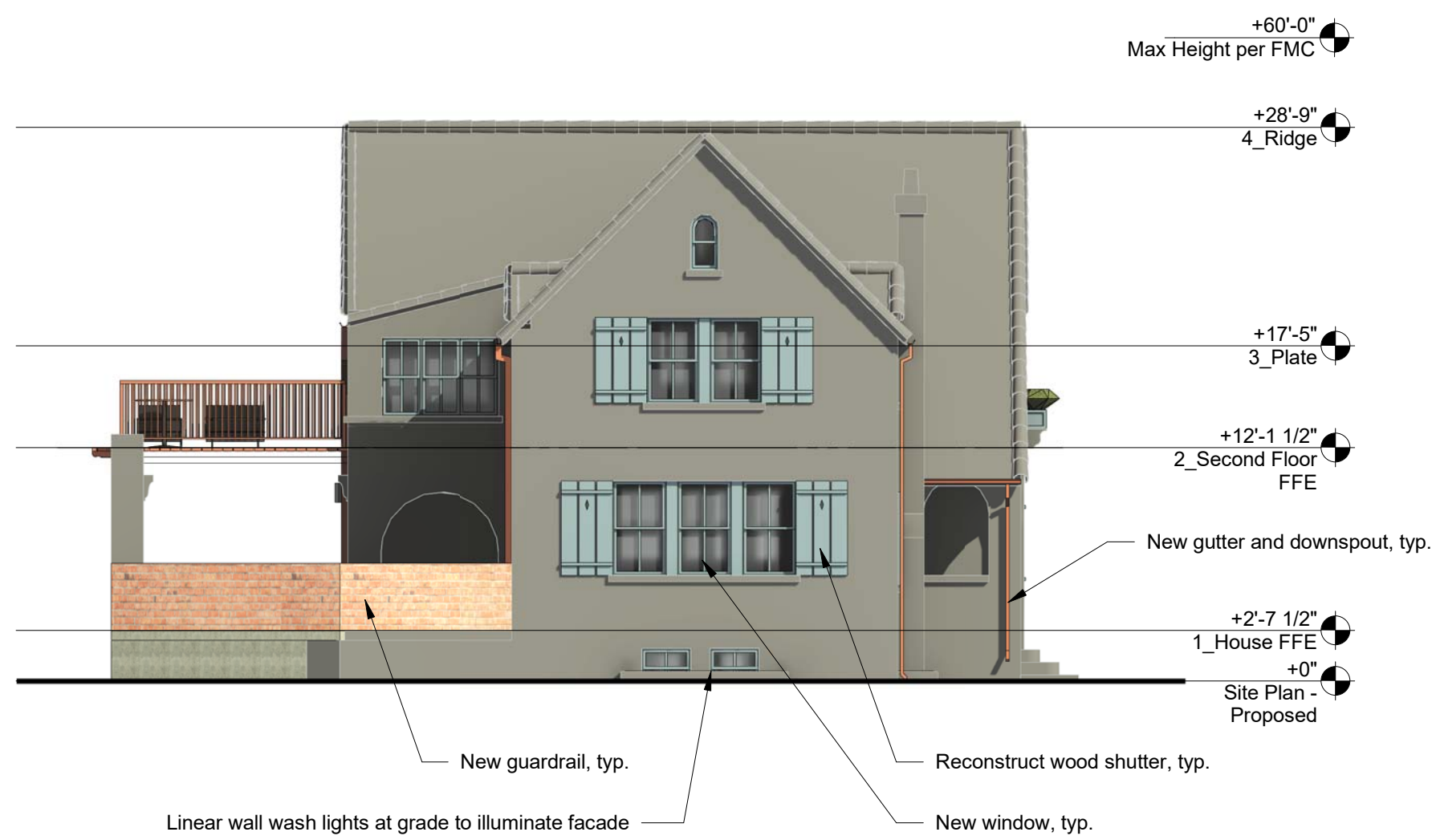
7 North - Existing
1/8" = 1'-0"



6 West - Proposed
1/8" = 1'-0"



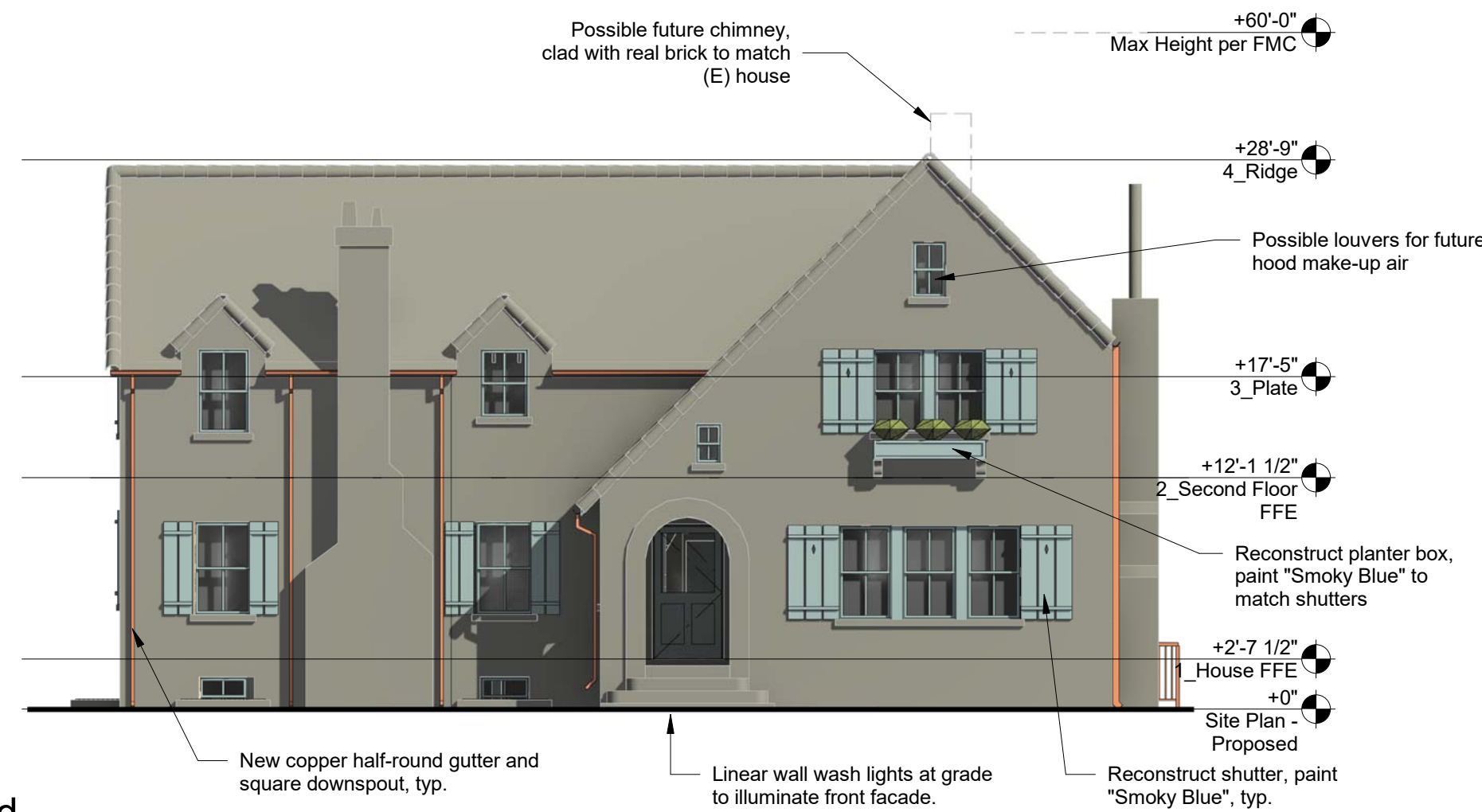
5 West - Existing
1/8" = 1'-0"



4 South - Proposed
1/8" = 1'-0"



3 South - Existing
1/8" = 1'-0"



2 East - Proposed
1/8" = 1'-0"



1 East - Existing
1/8" = 1'-0"

General Notes

- Keynotes apply to this sheet only.
- For more information on windows and doors, see Schedules on A701-704.
- Height maximum per Fresno Municipal Code is 60'. Existing building to remain, no changes at this time.

PH

PAUL HALAJIAN ARCHITECTS

389 Clovis Ave, Suite 100
Clovis, CA 93612-1185
T: 559.297.7900 F: 559.297.7950
www.halajianarch.com



PAUL HALAJIAN ARCHITECTS expressly reserves its common law copyright and other property rights specifically related to the contents of these plans. This document and the ideas and designs incorporated herein, as an instrument of professional service rendered by PAUL HALAJIAN ARCHITECTS, is not to be used in whole or in part for any other project without prior written authorization from PAUL HALAJIAN ARCHITECTS.

PROJECT: Reza Assemi Craycroft Change of Occupancy

6545 North Palm Ave, Fresno, CA 93704

SHEET: Exterior Elevations

DRAWING SET INFORMATION:

10.15.2021 DP Submittal

REVISIONS:

| NO. | DESCRIPTION | DATE |
|-----|-------------|------|
| | | |
| | | |
| | | |
| | | |

PROJECT NUMBER:

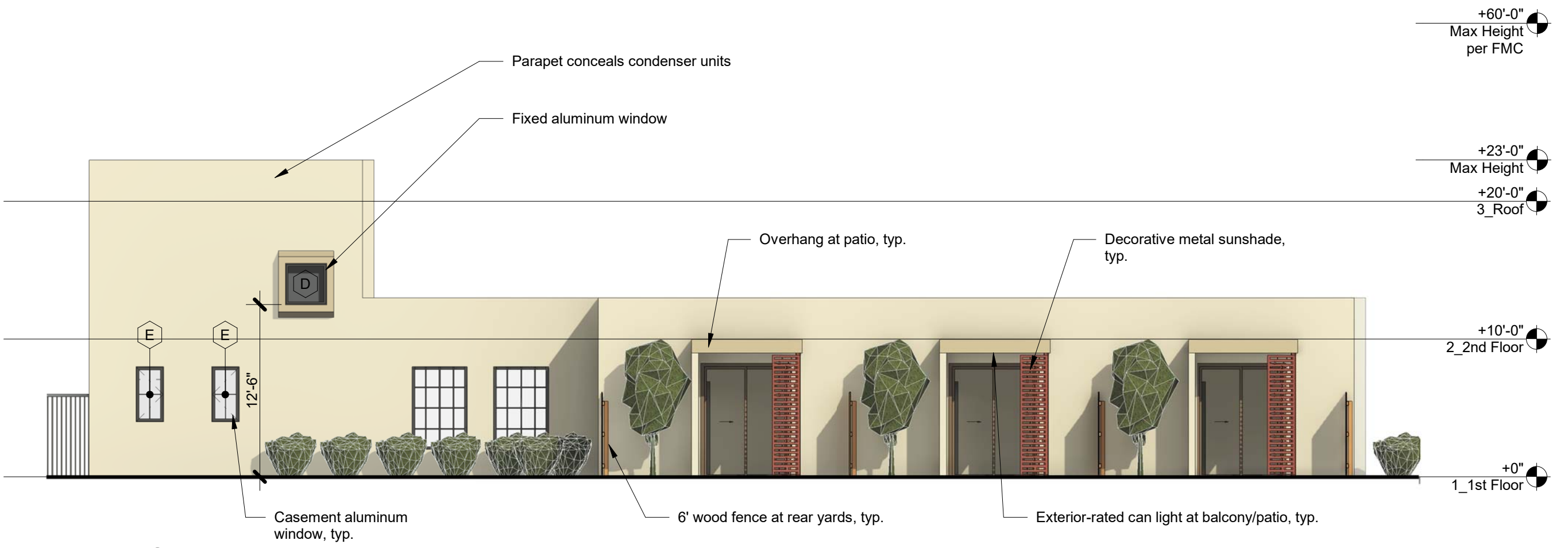
2017-34

SHEET NUMBER:

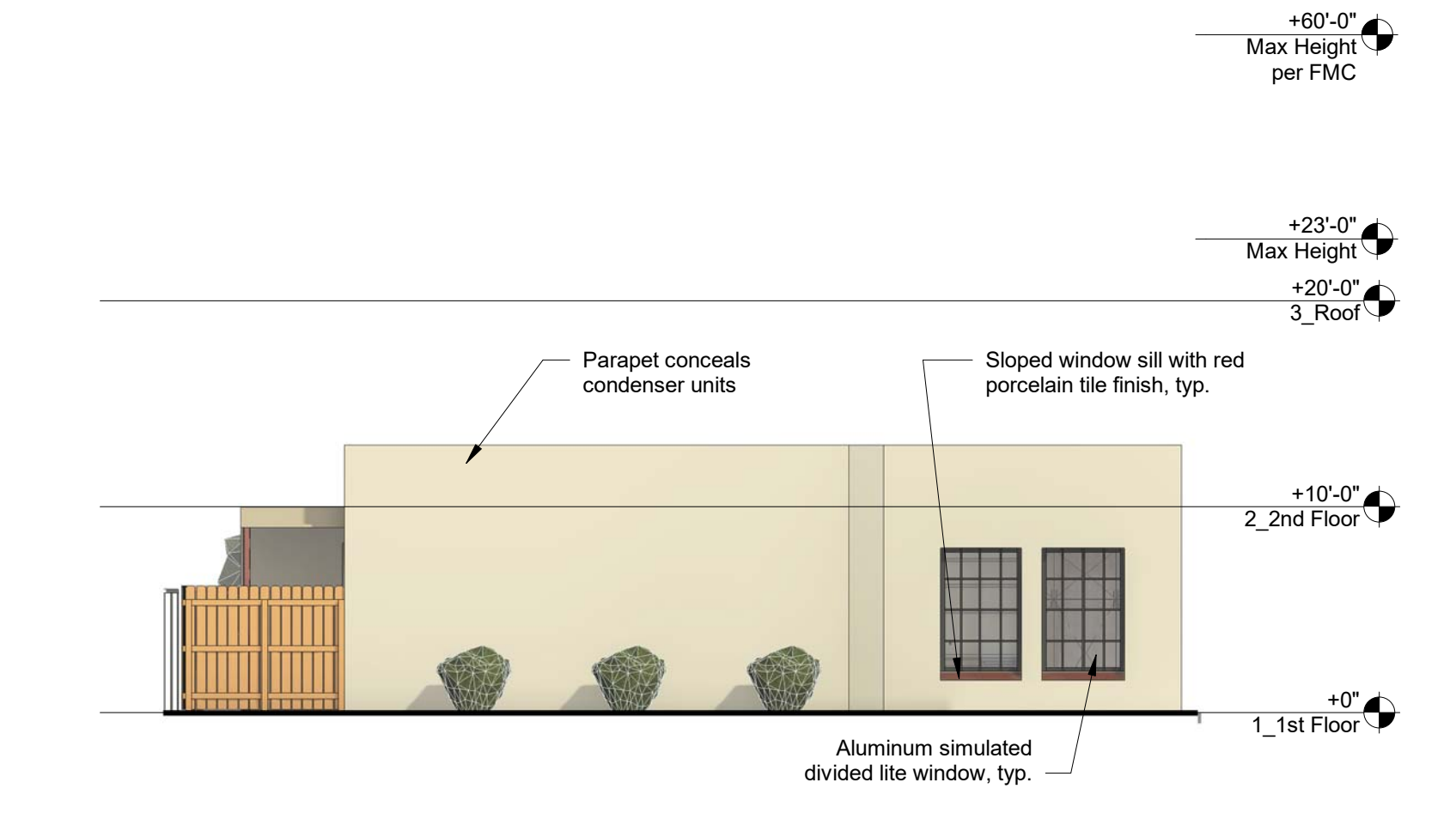
A11



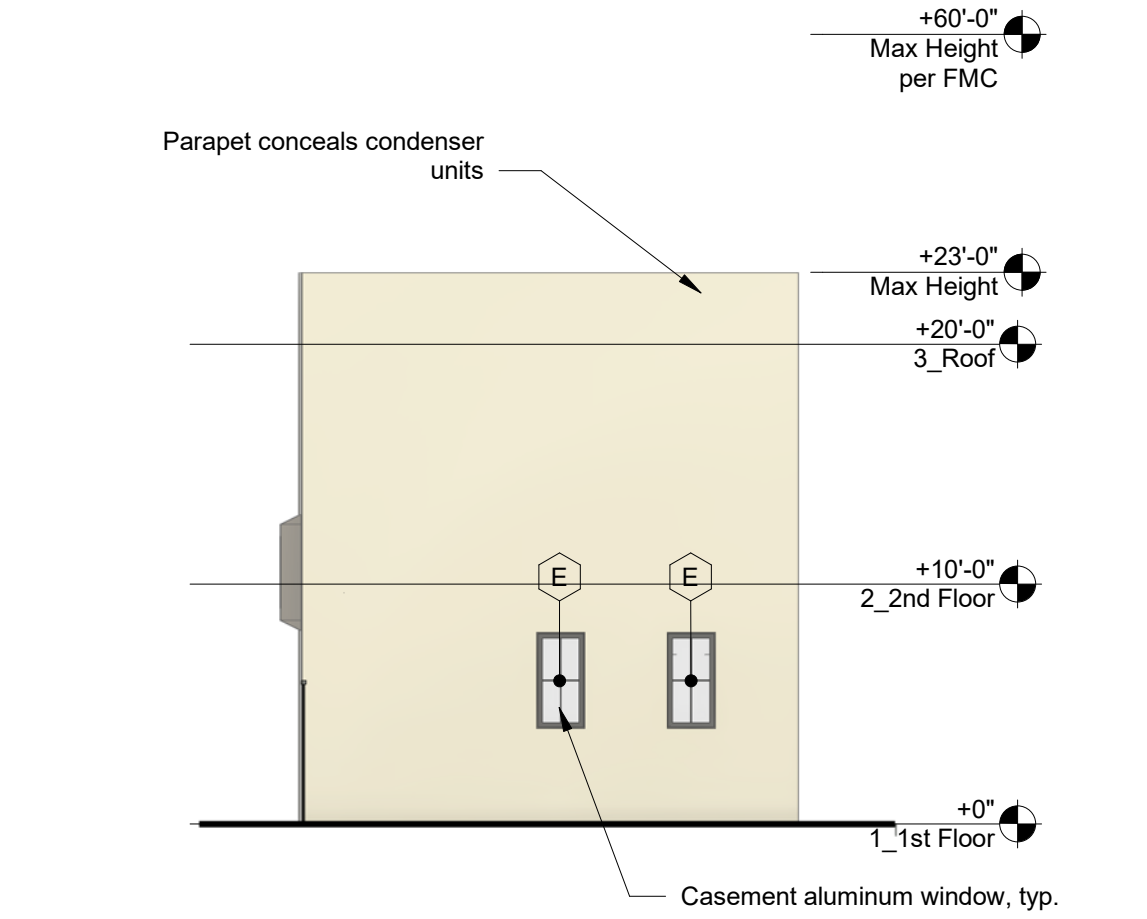
6 Building West
1/8" = 1'-0"



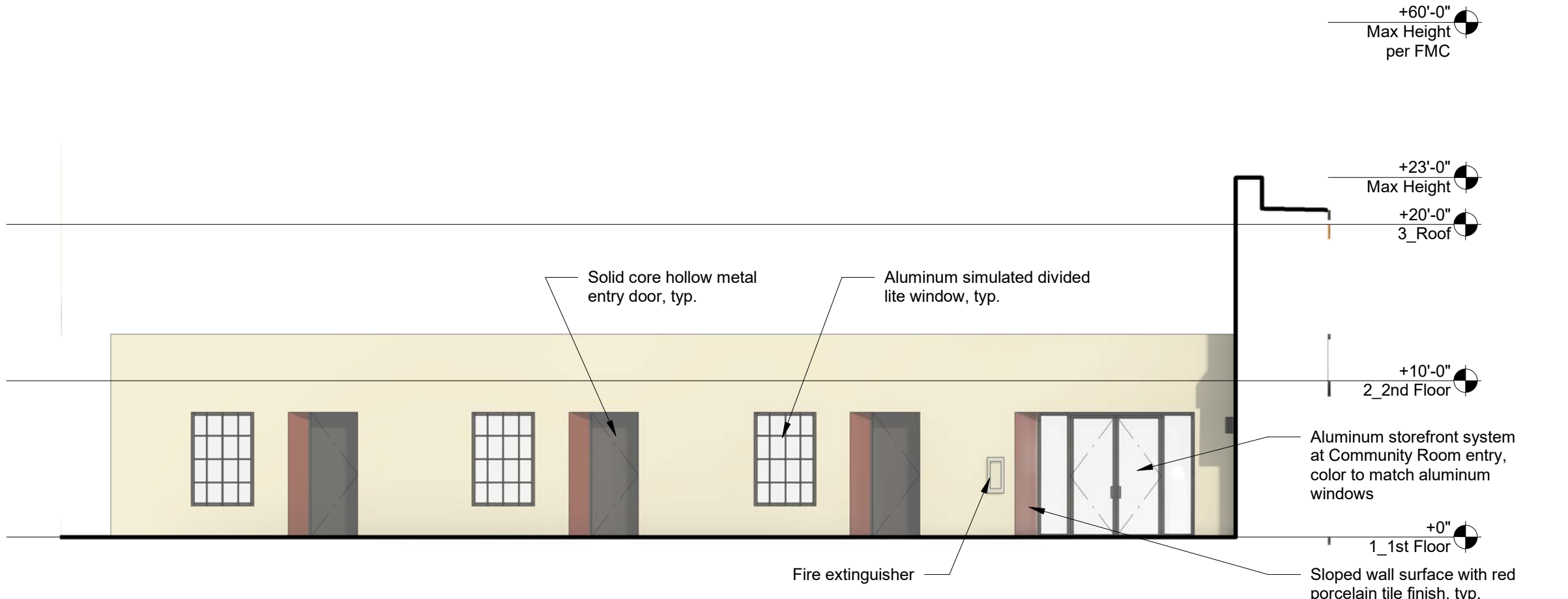
5 Building South
1/8" = 1'-0"



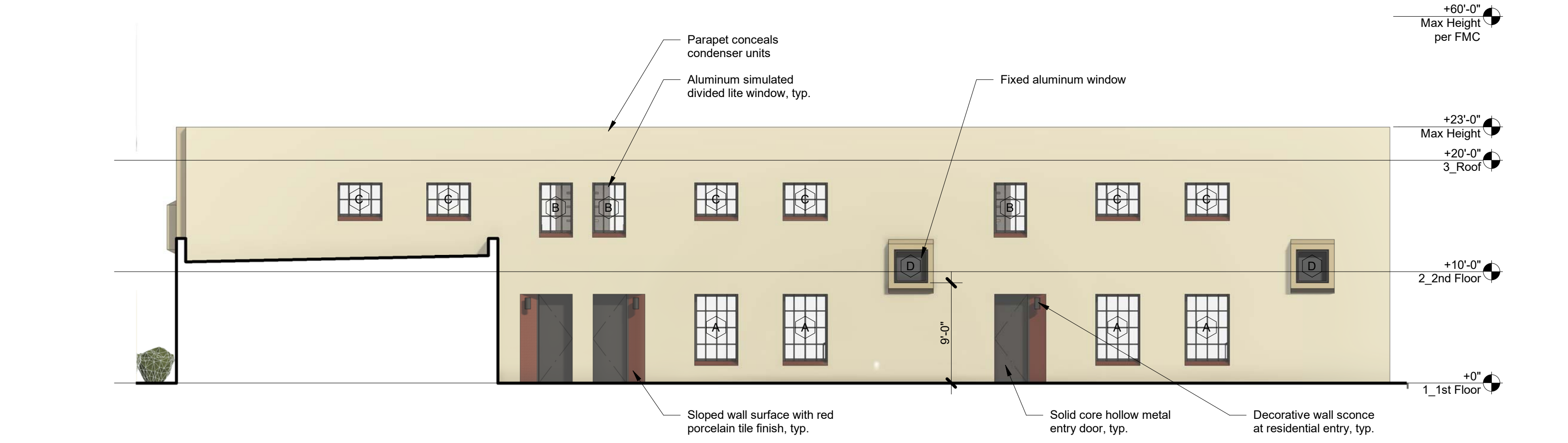
4 East
1/8" = 1'-0"



3 Building North
1/8" = 1'-0"



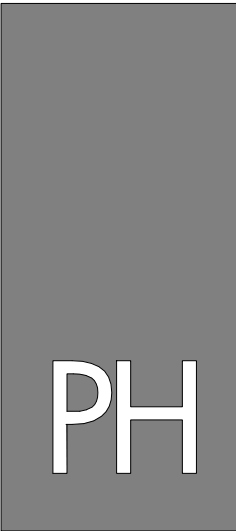
2 Courtyard South
1/8" = 1'-0"



1 Courtyard West
1/8" = 1'-0"

General Notes

- 1) Keynotes apply to this sheet only.
- 2) For more information on windows and doors, see tags on floor plans and schedules, typ.
- 3) Site elevation shown here is approximate and for reference only. Refer to civil package for final grades.
- 4) Landscaping shown here is approximate and for coordination purposes only, refer to Landscape drawings for more information.
- 5) See Finish Schedule on A7xx for material abbreviations and more information.



PAUL HALAJIAN
ARCHITECTS
389 Clovis Ave, Suite 100
Clovis, CA 93612-1185
T: 559.297.7900 F: 559.297.7950
www.halajianarch.com



PAUL HALAJIAN ARCHITECTS expressly reserves its common law copyright and other property rights specifically related to the contents of these plans. This document and the ideas and designs incorporated herein, as an instrument of professional service rendered by PAUL HALAJIAN ARCHITECTS, is not to be used in whole or in part for any other project without prior written authorization from PAUL HALAJIAN ARCHITECTS.

PROJECT:
**Reza Assemi
Craycroft Housing**
6545 North Palm Avenue, Fresno, CA 93704
SHEET: Exterior Elevations

| DRAWING SET INFORMATION: | |
|--------------------------|--------------|
| 12.02.2021 | DP Submittal |
| REVISIONS: | |
| | |
| | |
| | |
| | |
| | |
| | |

PROJECT NUMBER:
2017-34
SHEET NUMBER:
A16