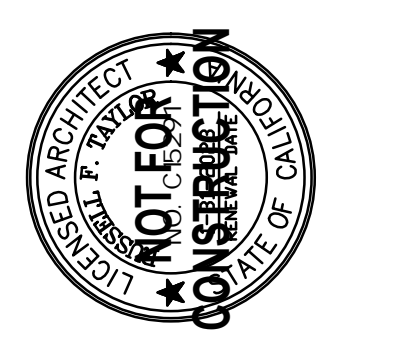


- ### KEYNOTES
- NOT ALL KEYNOTES MAY PERTAIN TO THIS SHEET
1. (N) WINDOW OPENINGS; SEE EXTERIOR ELEVATIONS & WINDOW SCHEDULE
 2. INDICATES (E) CONCRETE PAD TO BE REMOVED
 3. INFILL (E) WALL OPENING; PATCH TO MATCH (E) WALL; SEE EXTERIOR ELEVATIONS FOR EXTENT OF INFILL
 4. INDICATES OVERHANGS
 5. (N) STOREFRONT SYSTEM; SEE DOOR & WINDOW SCHEDULE
 6. INDICATES (N) ROLL-UP SERVICE DOOR; SEE DOOR SCHEDULE
 7. INDICATES (E) PIPES TO BE REMOVED OR RELOCATED; SEE PLUMBING DRAWINGS
 8. INDICATES (E) PIPES BELOW STAIRS TO BE REMOVED OR RELOCATED; SEE PLUMBING DRAWINGS
 9. INDICATES (E) PIPES AT FLOOR TO BE REMOVED OR RELOCATED; SEE PLUMBING DRAWINGS
 10. INDICATES (E) SUMP PUMP TO REMAIN
 11. INDICATES PORTION OF (E) STAIRS TO BE REMOVED
 12. INDICATES (N) GUARDRAIL
 13. INDICATES (N) HOSE BIB
 14. INDICATES OUTLINE OF FLOOR ABOVE
 15. INDICATES (N) SHELF
 16. INDICATES (N) PATIO WALL, TYP.
 17. INDICATES CANOPY BELOW
 18. INDICATES PREFABRICATED FIRE PIT
 19. INDICATES PREFABRICATED BBQ PIT
 20. PAINTED WHITE DIRECTIONAL ARROW, TYP.; SEE DETAIL XX/AXXX
 21. INDICATES (N) 6" CONCRETE WHEEL STOP, SEE DETAIL XX/AXXX
 22. (N) VAN-ACCESSIBLE AND STANDARD ACCESSIBLE PARKING STALLS W/ ACCESSIBLE ACCESS AISLES. PAINT INTERNATIONAL SYMBOL OF ACCESSIBILITY PER DETAIL XX/AXXX
 23. (N) PARKING SIGN FOR ACCESSIBLE SPACES, TYP.; SEE DETAIL XX/A001
 24. (N) ACCESSIBLE PARKING STALL(S), TYP.; SEE TYP. DETAILS XX & H/AXXX
 25. (N) PAINTED WHITE STRIPPING AT 3'-0" O.C. AT PEDESTRIAN AISLE
 26. INDICATES COMPACT CAR STALL, TYP.
 27. LOCATION FOR FUTURE ELECTRICAL VEHICLE STALLS & EQUIPMENT



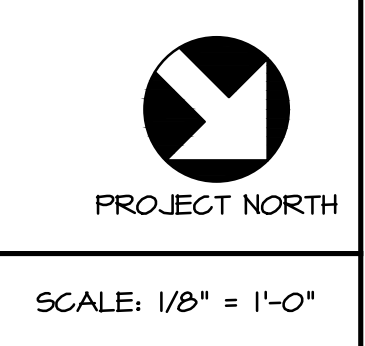
MARK	DATE	DESCRIPTION
-	11/15/2022	DEVELOPMENT PERMIT SUBMITTAL PACKAGE

PROPOSED MIXED-USE HOUSING AND RETAIL ADAPTIVE REUSE:
THE PENNY
 959 FULTON STREET
 FRESNO, CA 93721

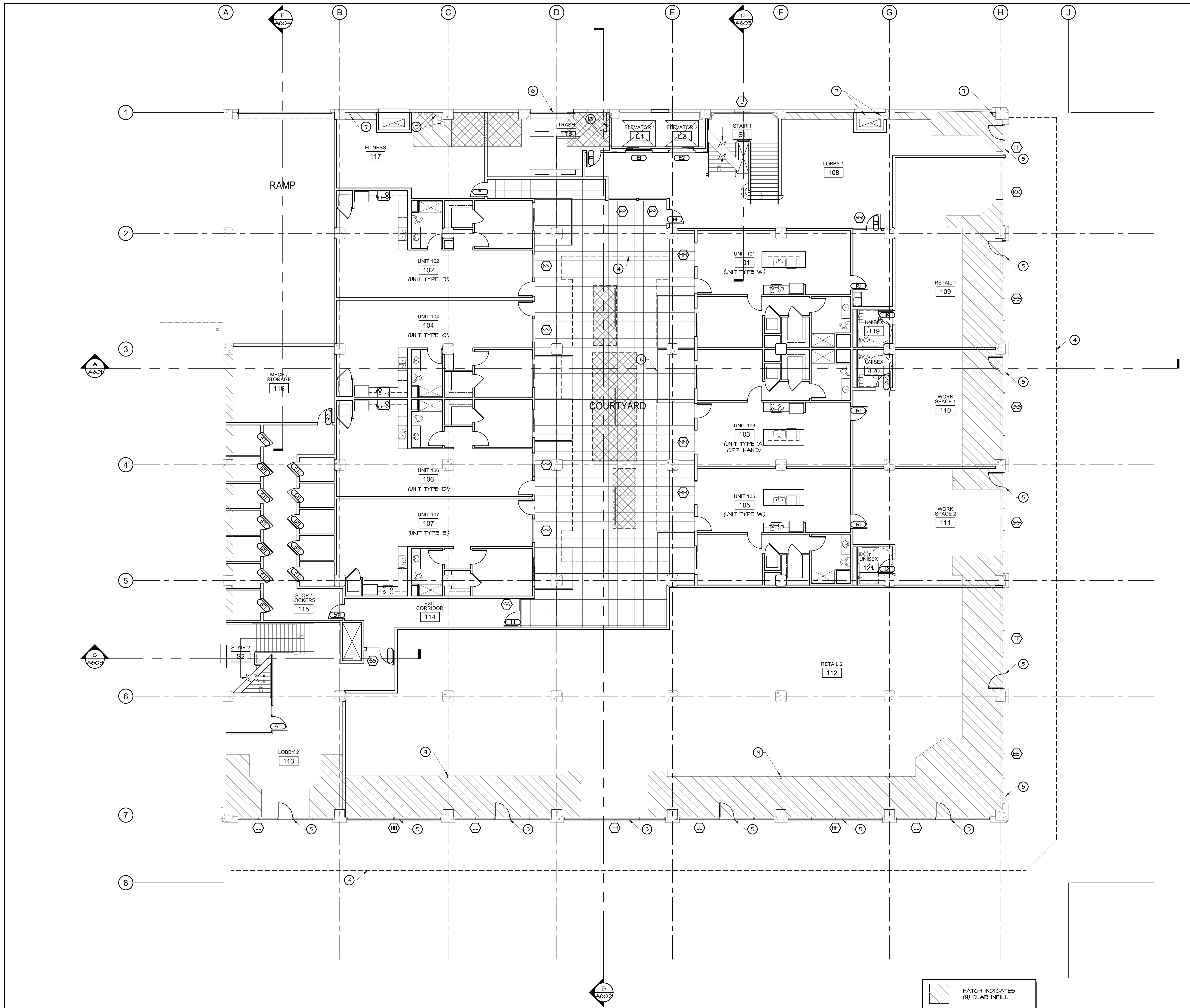
BASEMENT-PARKING LEVEL - KEYNOTE FLOOR PLAN

The Taylor Group expressly reserves the copyright in this drawing. No part of this drawing may be reproduced, stored in a retrieval system, or transmitted in any form or by any means, electronic, mechanical, photocopying, recording, or by any information storage and retrieval system, without the prior written consent of The Taylor Group.

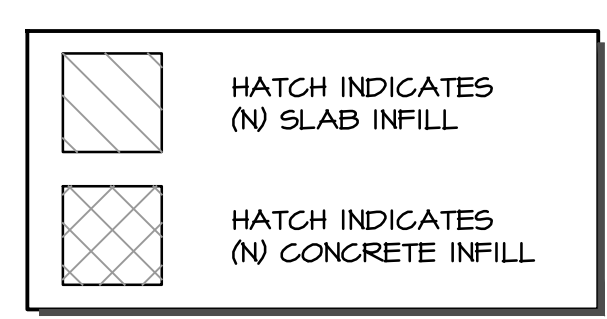
BASEMENT / PARKING LEVEL - KEYNOTE FLOOR PLAN



SCALE: 1/8" = 1'-0"

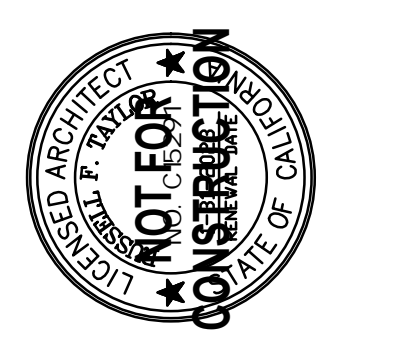
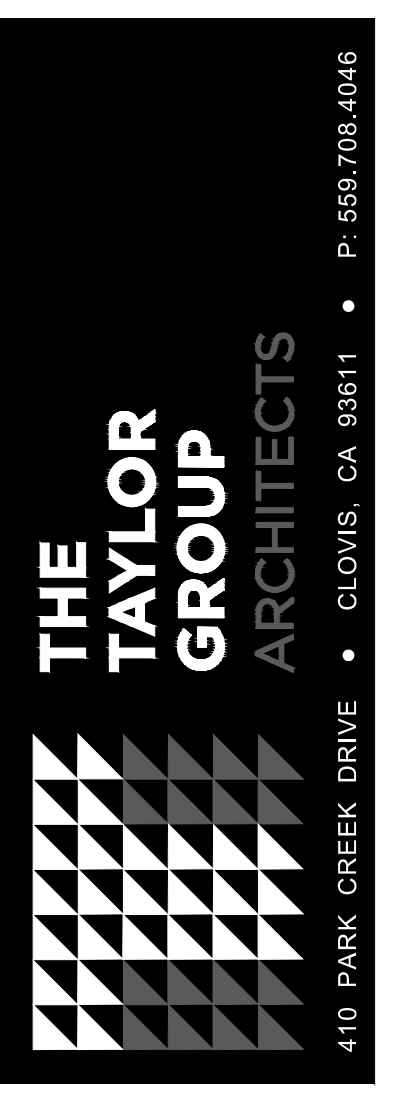


- ### KEYNOTES
- NOT ALL KEYNOTES MAY PERTAIN TO THIS SHEET
1. (N) WINDOW OPENINGS; SEE EXTERIOR ELEVATIONS & WINDOW SCHEDULE
 2. INDICATES (E) CONCRETE PAD TO BE REMOVED
 3. INFILL (E) WALL OPENING; PATCH TO MATCH (E) WALL; SEE EXTERIOR ELEVATIONS FOR EXTENT OF INFILL
 4. INDICATES OVERHANGS
 5. (N) STOREFRONT SYSTEM; SEE DOOR & WINDOW SCHEDULE
 6. INDICATES (N) ROLL-UP SERVICE DOOR; SEE DOOR SCHEDULE
 7. INDICATES (E) PIPES TO BE REMOVED OR RELOCATED; SEE PLUMBING DRAWINGS
 8. INDICATES (E) PIPES BELOW STAIRS TO BE REMOVED OR RELOCATED; SEE PLUMBING DRAWINGS
 9. INDICATES (E) PIPES AT FLOOR TO BE REMOVED OR RELOCATED; SEE PLUMBING DRAWINGS
 10. INDICATES (E) SUMP PUMP TO REMAIN
 11. INDICATES PORTION OF (E) STAIRS TO BE REMOVED
 12. INDICATES (N) GUARDRAIL
 13. INDICATES (N) HOSE BIB
 14. INDICATES OUTLINE OF FLOOR ABOVE
 15. INDICATES (N) SHELF
 16. INDICATES (N) PATIO WALL, TYP.
 17. INDICATES CANOPY BELOW
 18. INDICATES PREFABRICATED FIRE PIT
 19. INDICATES PREFABRICATED BBQ PIT
 20. PAINTED WHITE DIRECTIONAL ARROW, TYP.; SEE DETAIL XX/AXXX
 21. INDICATES (N) 6" CONCRETE WHEEL STOP, SEE DETAIL XX/AXXX
 22. (N) VAN-ACCESSIBLE AND STANDARD ACCESSIBLE PARKING STALLS W/ ACCESSIBLE ACCESS AISLES, PAINT INTERNATIONAL SYMBOL OF ACCESSIBILITY PER DETAIL XX/AXXX
 23. (N) PARKING SIGN FOR ACCESSIBLE SPACES, TYP.; SEE DETAIL XX/A001
 24. (N) ACCESSIBLE PARKING STALL(S), TYP.; SEE TYP. DETAILS XX & R/AXXX
 25. (N) PAINTED WHITE STRIPPING AT 3'-0" O.C. AT PEDESTRIAN AISLE
 26. INDICATES COMPACT CAR STALL, TYP.
 27. LOCATION FOR FUTURE ELECTRICAL VEHICLE STALLS & EQUIPMENT



1st FLOOR-STREET LEVEL - KEYNOTE FLOOR PLAN

SCALE: 1/8" = 1'-0"

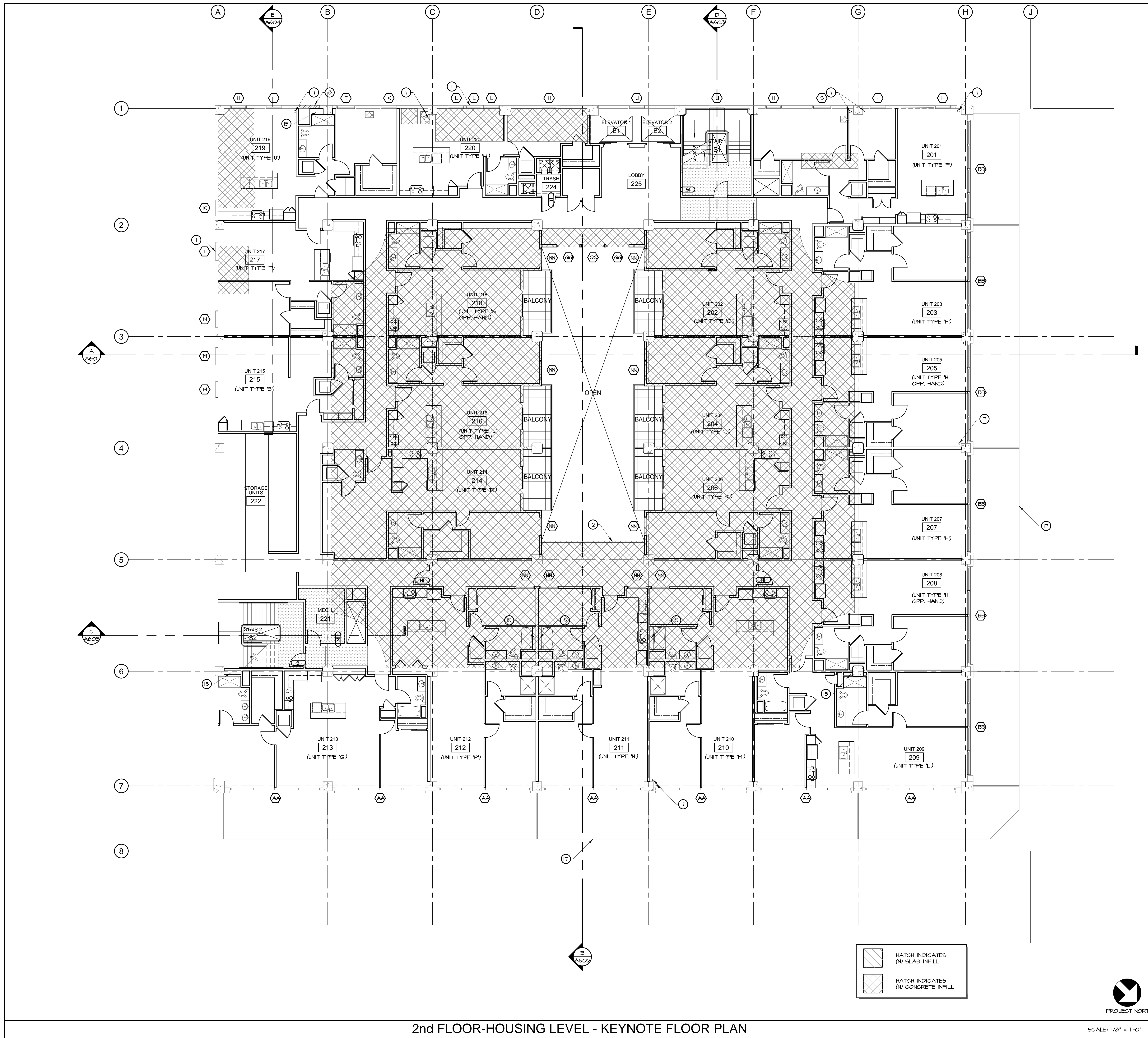


MARK	DATE	DESCRIPTION
-	11/15/2022	DEVELOPMENT PERMIT SUBMITTAL PACKAGE

PROPOSED MIXED-USE HOUSING AND RETAIL ADAPTIVE REUSE:
THE PENNY
 959 FULTON STREET
 FRESNO, CA 93721

1st FLOOR-STREET LEVEL - KEYNOTE FLOOR PLAN

The Taylor Group expressly reserves the copyright to this drawing. No part of this drawing may be reproduced, stored in a retrieval system, or transmitted in any form or by any means, electronic, mechanical, photocopying, recording, or by any information storage and retrieval system, without the prior written consent of Taylor Group Architects.



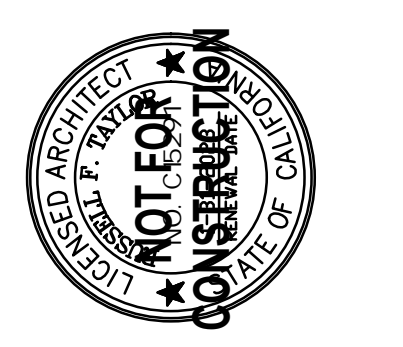
- ### KEYNOTES
- NOT ALL KEYNOTES MAY PERTAIN TO THIS SHEET
- (N) WINDOW OPENINGS; SEE EXTERIOR ELEVATIONS & WINDOW SCHEDULE
 - INDICATES (E) CONCRETE PAD TO BE REMOVED
 - INFILL (E) WALL OPENING; PATCH TO MATCH (E) WALL; SEE EXTERIOR ELEVATIONS FOR EXTENT OF INFILL
 - INDICATES OVERHANGS
 - STOREFRONT SYSTEM; SEE DOOR & WINDOW SCHEDULE
 - INDICATES (N) ROLL-UP SERVICE DOOR; SEE DOOR SCHEDULE
 - INDICATES (E) PIPES TO BE REMOVED OR RELOCATED; SEE PLUMBING DRAWINGS
 - INDICATES (E) PIPES BELOW STAIRS TO BE REMOVED OR RELOCATED; SEE PLUMBING DRAWINGS
 - INDICATES (E) PIPES AT FLOOR TO BE REMOVED OR RELOCATED; SEE PLUMBING DRAWINGS
 - INDICATES (E) SUMP PUMP TO REMAIN
 - INDICATES PORTION OF (E) STAIRS TO BE REMOVED
 - INDICATES (N) GUARDRAIL
 - INDICATES (N) HOSE BIB
 - INDICATES OUTLINE OF FLOOR ABOVE
 - INDICATES (N) SHELF
 - INDICATES (N) PATIO WALL, TYP.
 - INDICATES CANOPY BELOW
 - INDICATES PREFABRICATED FIRE PIT
 - INDICATES PREFABRICATED BBQ PIT
 - PAINTED WHITE DIRECTIONAL ARROW, TYP.; SEE DETAIL XX/AXXX
 - INDICATES (N) 6" CONCRETE WHEEL STOP, SEE DETAIL XX/AXXX
 - (N) VAN-ACCESSIBLE AND STANDARD ACCESSIBLE PARKING STALLS W/ ACCESSIBLE ACCESS AISLES, PAINT INTERNATIONAL SYMBOL OF ACCESSIBILITY PER DETAIL XX/AXXX
 - (N) PARKING SIGN FOR ACCESSIBLE SPACES, TYP.; SEE DETAIL XX/A01
 - (N) ACCESSIBLE PARKING STALL(S), TYP.; SEE TYP. DETAILS XX & R/AXXX
 - (N) PAINTED WHITE STRIPPING AT 3'-0" O.C. AT PEDESTRIAN AISLE
 - INDICATES COMPACT CAR STALL, TYP.
 - LOCATION FOR FUTURE ELECTRICAL VEHICLE STALLS & EQUIPMENT

HATCH INDICATES (N) SLAB INFILL
 HATCH INDICATES (N) CONCRETE INFILL



2nd FLOOR-HOUSING LEVEL - KEYNOTE FLOOR PLAN

SCALE: 1/8" = 1'-0"

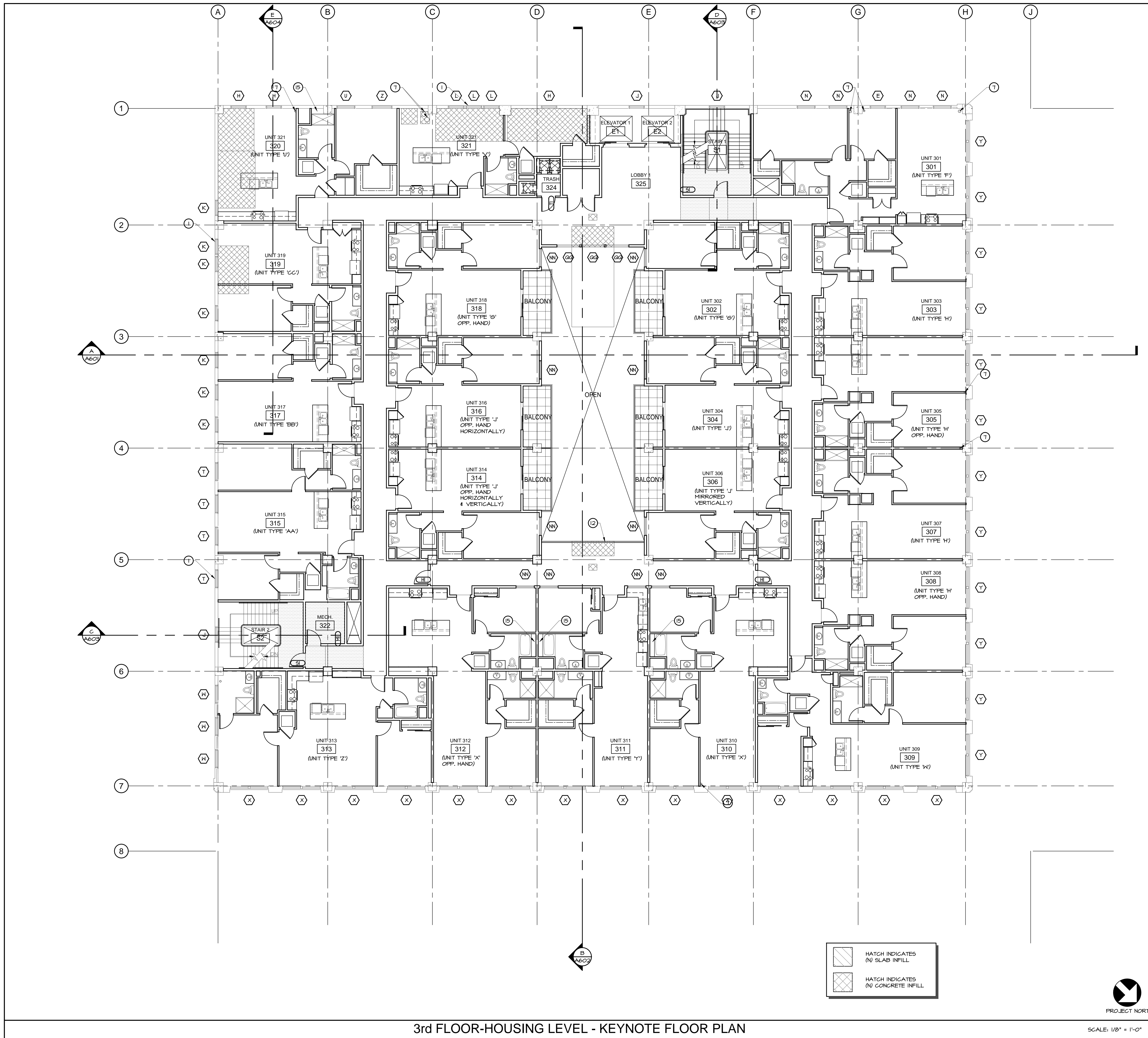


MARK	DATE	DESCRIPTION
-	11/15/2022	DEVELOPMENT PERMIT SUBMITTAL PACKAGE

PROPOSED MIXED-USE HOUSING AND RETAIL ADAPTIVE REUSE:
THE PENNY
 959 FULTON STREET
 FRESNO, CA 93721
 2nd FLOOR-HOUSING LEVEL - KEYNOTE FLOOR PLAN

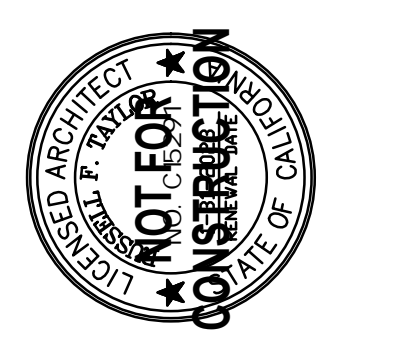
The Taylor Group expressly reserves the copyright in this plan. This document, its contents, and any other information incorporated herein, as an instrument of professional service, is the property of The Taylor Group and shall remain confidential and shall not be used, copied, or disseminated in whole or in part, for any other project without the prior written consent of The Taylor Group.

PROJECT NO.
 20-007.00
 DRAWING
A202
 www.tlgrouparchitects.com



KEYNOTES NOT ALL KEYNOTES MAY PERTAIN TO THIS SHEET

1. (N) WINDOW OPENINGS; SEE EXTERIOR ELEVATIONS & WINDOW SCHEDULE
2. INDICATES (E) CONCRETE PAD TO BE REMOVED
3. INFILL (E) WALL OPENING; PATCH TO MATCH (E) WALL; SEE EXTERIOR ELEVATIONS FOR EXTENT OF INFILL
4. INDICATES OVERHANGS
5. (N) STOREFRONT SYSTEM; SEE DOOR & WINDOW SCHEDULE
6. INDICATES (N) ROLL-UP SERVICE DOOR; SEE DOOR SCHEDULE
7. INDICATES (E) PIPES TO BE REMOVED OR RELOCATED; SEE PLUMBING DRAWINGS
8. INDICATES (E) PIPES BELOW STAIRS TO BE REMOVED OR RELOCATED; SEE PLUMBING DRAWINGS
9. INDICATES (E) PIPES AT FLOOR TO BE REMOVED OR RELOCATED; SEE PLUMBING DRAWINGS
10. INDICATES (E) SUMP PUMP TO REMAIN
11. INDICATES PORTION OF (E) STAIRS TO BE REMOVED
12. INDICATES (N) GUARDRAIL
13. INDICATES (N) HOSE BIB
14. INDICATES OUTLINE OF FLOOR ABOVE
15. INDICATES (N) SHELF
16. INDICATES (N) PATIO WALL, TYP.
17. INDICATES CANOPY BELOW
18. INDICATES PREFABRICATED FIRE PIT
19. INDICATES PREFABRICATED BBQ PIT
20. PAINTED WHITE DIRECTIONAL ARROW, TYP.; SEE DETAIL XX/AXXX
21. INDICATES (N) 6" CONCRETE WHEEL STOP, SEE DETAIL XX/AXXX
22. (N) VAN-ACCESSIBLE AND STANDARD ACCESSIBLE PARKING STALLS W/ ACCESSIBLE ACCESS AISLES, PAINT INTERNATIONAL SYMBOL OF ACCESSIBILITY PER DETAIL XX/AXXX
23. (N) PARKING SIGN FOR ACCESSIBLE SPACES, TYP.; SEE DETAIL XX/A001
24. (N) ACCESSIBLE PARKING STALL(S), TYP.; SEE TYP. DETAILS XX & H/AXXX
25. (N) PAINTED WHITE STRIPPING AT 3'-0" O.C. AT PEDESTRIAN AISLE
26. INDICATES COMPACT CAR STALL, TYP.
27. LOCATION FOR FUTURE ELECTRICAL VEHICLE STALLS & EQUIPMENT



MARK	DATE	DESCRIPTION
-	11/15/2022	DEVELOPMENT PERMIT SUBMITTAL PACKAGE

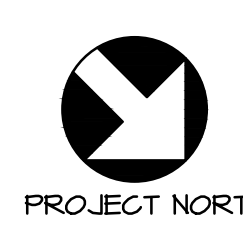
PROPOSED MIXED-USE HOUSING AND RETAIL ADAPTIVE REUSE:
THE PENNY
 959 FULTON STREET
 FRESNO, CA 93721

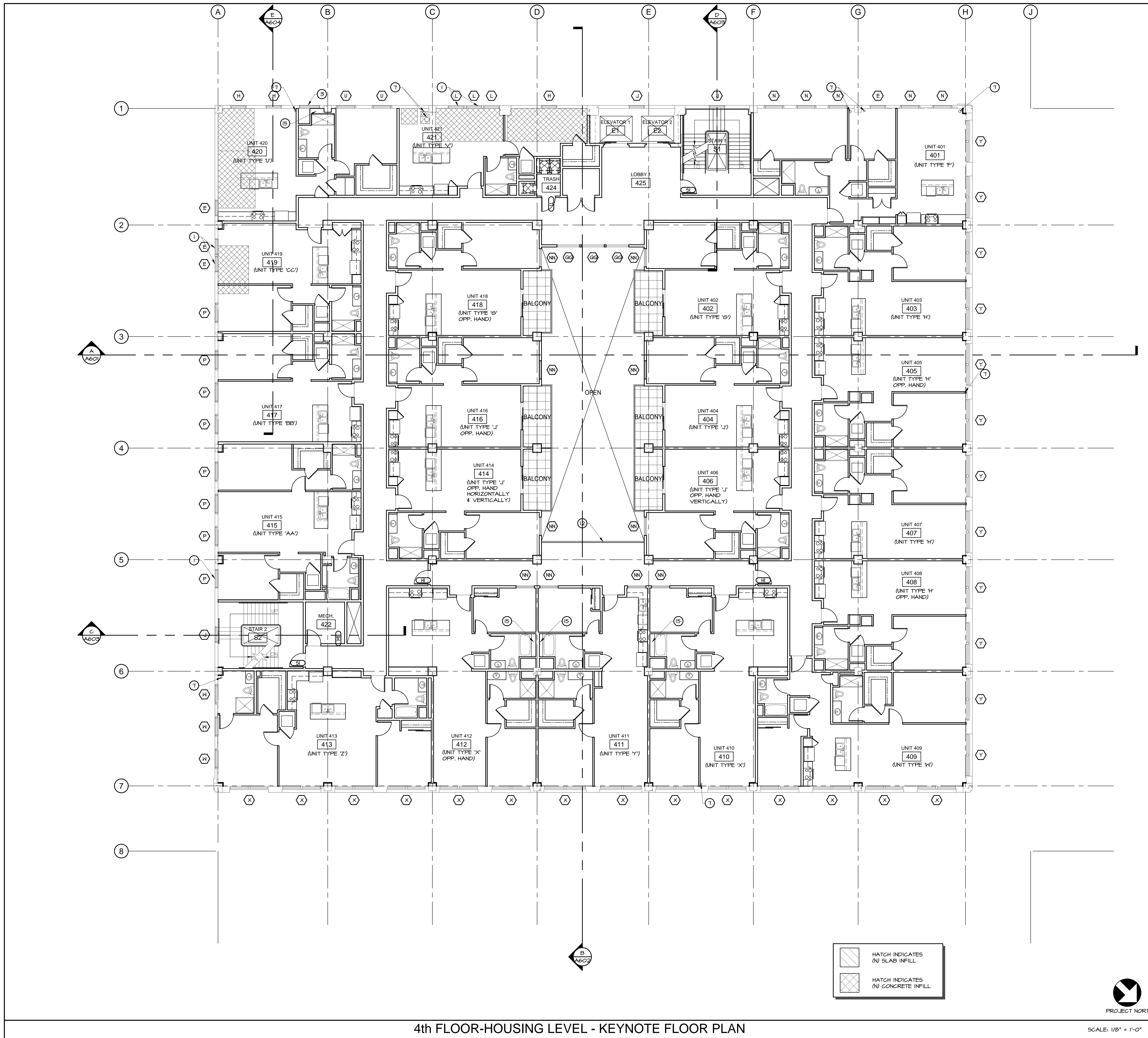
3rd FLOOR-HOUSING LEVEL - KEYNOTE FLOOR PLAN

The Taylor Group expressly reserves its copyright in this plan. This document, its contents, and any information incorporated herein, as an instrument of professional service, is the property of The Taylor Group and shall remain confidential in whole or in part, for any other project without prior written authorization.

3rd FLOOR-HOUSING LEVEL - KEYNOTE FLOOR PLAN

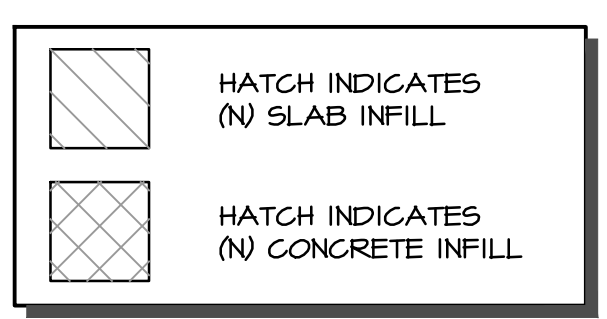
SCALE: 1/8" = 1'-0"





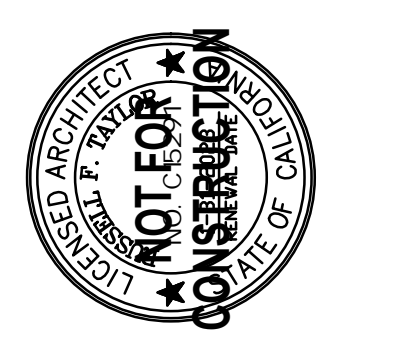
KEYNOTES NOT ALL KEYNOTES MAY PERTAIN TO THIS SHEET

1. (N) WINDOW OPENINGS; SEE EXTERIOR ELEVATIONS & WINDOW SCHEDULE
2. INDICATES (E) CONCRETE PAD TO BE REMOVED
3. INFILL (E) WALL OPENING; PATCH TO MATCH (E) WALL; SEE EXTERIOR ELEVATIONS FOR EXTENT OF INFILL
4. INDICATES OVERHANGS
5. (N) STOREFRONT SYSTEM; SEE DOOR & WINDOW SCHEDULE
6. INDICATES (N) ROLL-UP SERVICE DOOR; SEE DOOR SCHEDULE
7. INDICATES (E) PIPES TO BE REMOVED OR RELOCATED; SEE PLUMBING DRAWINGS
8. INDICATES (E) PIPES BELOW STAIRS TO BE REMOVED OR RELOCATED; SEE PLUMBING DRAWINGS
9. INDICATES (E) PIPES AT FLOOR TO BE REMOVED OR RELOCATED; SEE PLUMBING DRAWINGS
10. INDICATES (E) SUMP PUMP TO REMAIN
11. INDICATES PORTION OF (E) STAIRS TO BE REMOVED
12. INDICATES (N) GUARDRAIL
13. INDICATES (N) HOSE BIB
14. INDICATES OUTLINE OF FLOOR ABOVE
15. INDICATES (N) SHELF
16. INDICATES (N) PATIO WALL, TYP.
17. INDICATES CANOPY BELOW
18. INDICATES PREFABRICATED FIRE PIT
19. INDICATES PREFABRICATED BBQ PIT
20. PAINTED WHITE DIRECTIONAL ARROW, TYP.; SEE DETAIL XX/AXXX
21. INDICATES (N) 6" CONCRETE WHEEL STOP, SEE DETAIL XX/AXXX
22. (N) VAN-ACCESSIBLE AND STANDARD ACCESSIBLE PARKING STALLS W/ ACCESSIBLE ACCESS AISLES, PAINT INTERNATIONAL SYMBOL OF ACCESSIBILITY PER DETAIL XX/AXXX
23. (N) PARKING SIGN FOR ACCESSIBLE SPACES, TYP.; SEE DETAIL XX/A901
24. (N) ACCESSIBLE PARKING STALL(S), TYP.; SEE TYP. DETAILS XX & H/A9XX
25. (N) PAINTED WHITE STRIPPING AT 3'-0" O.C. AT PEDESTRIAN AISLE
26. INDICATES COMPACT CAR STALL, TYP.
27. LOCATION FOR FUTURE ELECTRICAL VEHICLE STALLS & EQUIPMENT



4th FLOOR-HOUSING LEVEL - KEYNOTE FLOOR PLAN

SCALE: 1/8" = 1'-0"

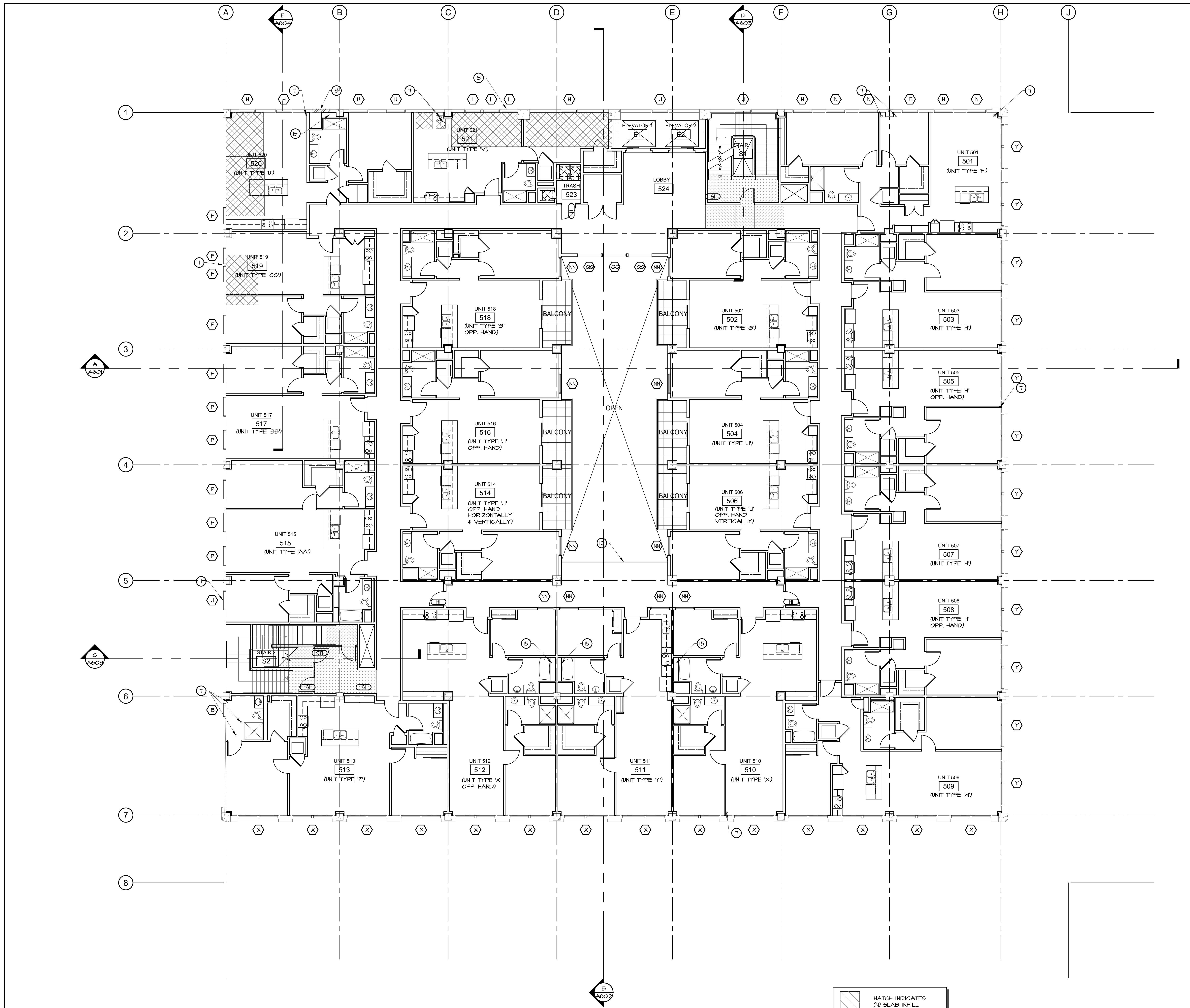


MARK	DATE	DESCRIPTION
-	11/15/2022	DEVELOPMENT PERMIT SUBMITTAL PACKAGE

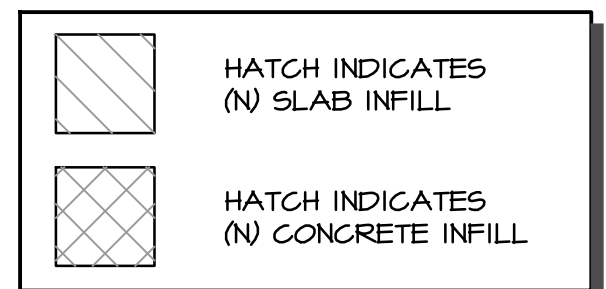
PROPOSED MIXED-USE HOUSING AND RETAIL ADAPTIVE REUSE:
THE PENNY
 959 FULTON STREET
 FRESNO, CA 93721

4th FLOOR-HOUSING LEVEL - KEYNOTE FLOOR PLAN

The Taylor Group expressly reserves the copyright to this plan. This document, its contents, and any information incorporated herein, as an instrument of professional service, is the property of The Taylor Group and shall remain confidential in whole or in part, for any other project without prior written authorization.

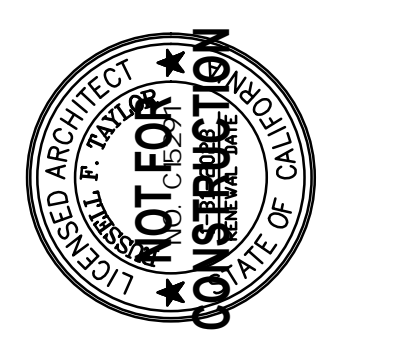


- ### KEYNOTES
- NOT ALL KEYNOTES MAY PERTAIN TO THIS SHEET
- (N) WINDOW OPENING; SEE EXTERIOR ELEVATIONS & WINDOW SCHEDULE
 - INDICATES (E) CONCRETE PAD TO BE REMOVED
 - INFILL (E) WALL OPENING; PATCH TO MATCH (E) WALL; SEE EXTERIOR ELEVATIONS FOR EXTENT OF INFILL
 - INDICATES OVERHANGS
 - (N) STOREFRONT SYSTEM; SEE DOOR & WINDOW SCHEDULE
 - INDICATES (N) ROLL-UP SERVICE DOOR; SEE DOOR SCHEDULE
 - INDICATES (E) PIPES TO BE REMOVED OR RELOCATED; SEE PLUMBING DRAWINGS
 - INDICATES (E) PIPES BELOW STAIRS TO BE REMOVED OR RELOCATED; SEE PLUMBING DRAWINGS
 - INDICATES (E) PIPES AT FLOOR TO BE REMOVED OR RELOCATED; SEE PLUMBING DRAWINGS
 - INDICATES (E) SUMP PUMP TO REMAIN
 - INDICATES PORTION OF (E) STAIRS TO BE REMOVED
 - INDICATES (N) GUARDRAIL
 - INDICATES (N) HOSE BIB
 - INDICATES OUTLINE OF FLOOR ABOVE
 - INDICATES (N) SHELF
 - INDICATES (N) PATIO WALL, TYP.
 - INDICATES CANOPY BELOW
 - INDICATES PREFABRICATED FIRE PIT
 - INDICATES PREFABRICATED BBQ PIT
 - PAINTED WHITE DIRECTIONAL ARROW, TYP.; SEE DETAIL XX/AXXX
 - INDICATES (N) 6" CONCRETE WHEEL STOP; SEE DETAIL XX/AXXX
 - (N) VAN-ACCESSIBLE AND STANDARD ACCESSIBLE PARKING STALLS W/ ACCESSIBLE ACCESS AISLES. PAINT INTERNATIONAL SYMBOL OF ACCESSIBILITY PER DETAIL XX/AXXX
 - (N) PARKING SIGN FOR ACCESSIBLE SPACES, TYP.; SEE DETAIL XX/A001
 - (N) ACCESSIBLE PARKING STALL(S), TYP.; SEE TYP. DETAILS XX & H/AXXX
 - (N) PAINTED WHITE STRIPPING AT 3'-0" O.C. AT PEDESTRIAN AISLE
 - INDICATES COMPACT CAR STALL, TYP.
 - LOCATION FOR FUTURE ELECTRICAL VEHICLE STALLS & EQUIPMENT



5th FLOOR-HOUSING LEVEL - KEYNOTE FLOOR PLAN

SCALE: 1/8" = 1'-0"

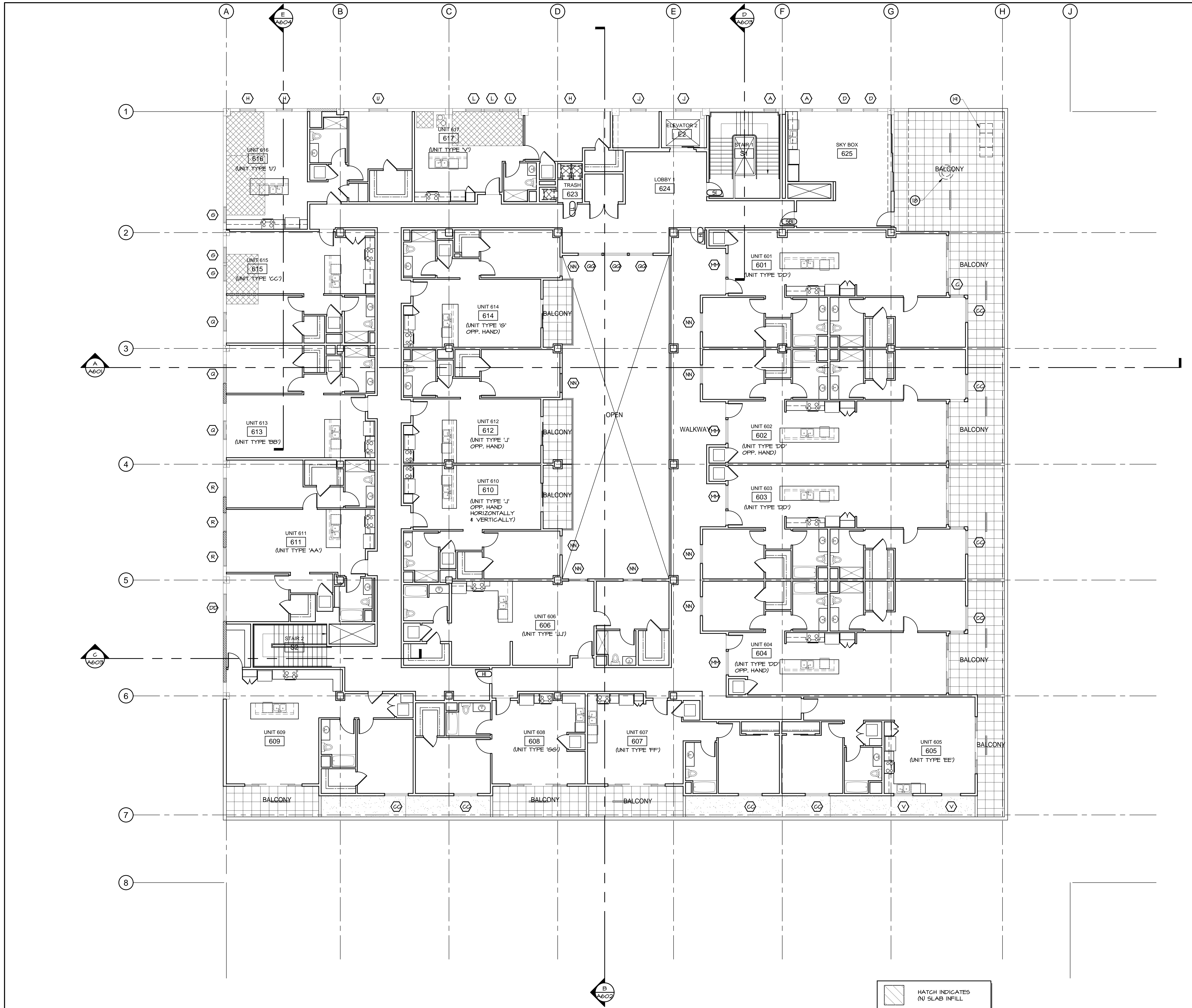


MARK	DATE	DESCRIPTION
-	11/15/2022	DEVELOPMENT PERMIT SUBMITTAL PACKAGE

PROPOSED MIXED-USE HOUSING AND RETAIL ADAPTIVE REUSE:
THE PENNY
 959 FULTON STREET
 FRESNO, CA 93721

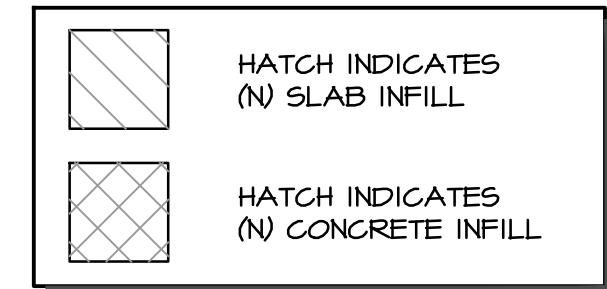
5th FLOOR-HOUSING LEVEL - KEYNOTE FLOOR PLAN

The Taylor Group expressly reserves the copyright to this document. All rights in this document, including the right to reproduce, distribute, or otherwise use the information contained herein, in any form or by any means, without the prior written consent of The Taylor Group are reserved.



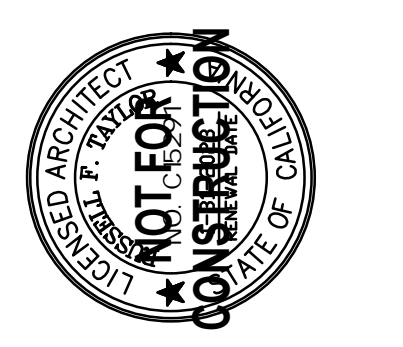
KEYNOTES NOT ALL KEYNOTES MAY PERTAIN TO THIS SHEET

1. (N) WINDOW OPENINGS; SEE EXTERIOR ELEVATIONS & WINDOW SCHEDULE
2. INDICATES (E) CONCRETE PAD TO BE REMOVED
3. INFILL (E) WALL OPENING; PATCH TO MATCH (E) WALL; SEE EXTERIOR ELEVATIONS FOR EXTENT OF INFILL
4. INDICATES OVERHANGS
5. (N) STOREFRONT SYSTEM; SEE DOOR & WINDOW SCHEDULE
6. INDICATES (N) ROLL-UP SERVICE DOOR; SEE DOOR SCHEDULE
7. INDICATES (E) PIPES TO BE REMOVED OR RELOCATED; SEE PLUMBING DRAWINGS
8. INDICATES (E) PIPES BELOW STAIRS TO BE REMOVED OR RELOCATED; SEE PLUMBING DRAWINGS
9. INDICATES (E) PIPES AT FLOOR TO BE REMOVED OR RELOCATED; SEE PLUMBING DRAWINGS
10. INDICATES (E) SUMP PUMP TO REMAIN
11. INDICATES PORTION OF (E) STAIRS TO BE REMOVED
12. INDICATES (N) GUARDRAIL
13. INDICATES (N) HOSE BIB
14. INDICATES OUTLINE OF FLOOR ABOVE
15. INDICATES (N) SHELF
16. INDICATES (N) PATIO WALL, TYP.
17. INDICATES CANOPY BELOW
18. INDICATES PREFABRICATED FIRE PIT
19. INDICATES PREFABRICATED BBQ PIT
20. PAINTED WHITE DIRECTIONAL ARROW, TYP.; SEE DETAIL XX/AXXX
21. INDICATES (N) 6" CONCRETE WHEEL STOP; SEE DETAIL XX/AXXX
22. (N) VAN-ACCESSIBLE AND STANDARD ACCESSIBLE PARKING STALLS w/ ACCESSIBLE ACCESS AISLES, PAINT INTERNATIONAL SYMBOL OF ACCESSIBILITY PER DETAIL XX/AXXX
23. (N) PARKING SIGN FOR ACCESSIBLE SPACES, TYP.; SEE DETAIL XX/A01
24. (N) ACCESSIBLE PARKING STALL(S), TYP.; SEE TYP. DETAILS XX & R/AXXX
25. (N) PAINTED WHITE STRIPPING AT 3'-0" O.C. AT PEDESTRIAN AISLE
26. INDICATES COMPACT CAR STALL, TYP.
27. LOCATION FOR FUTURE ELECTRICAL VEHICLE STALLS & EQUIPMENT



6th FLOOR-PENTHOUSE LEVEL - KEYNOTE FLOOR PLAN

SCALE: 1/8" = 1'-0"



MARK	DATE	DESCRIPTION
-	11/15/2022	DEVELOPMENT PERMIT SUBMITTAL PACKAGE

PROPOSED MIXED-USE HOUSING AND RETAIL ADAPTIVE REUSE:
THE PENNY
 959 FULTON STREET
 FRESNO, CA 93721

6th FLOOR-PENTHOUSE LEVEL - KEYNOTE FLOOR PLAN

The Taylor Group expressly reserves the copyright in this plan. This document, its contents, and the information incorporated herein, as an instrument of professional service, is the property of THE TAYLOR GROUP ARCHITECTS and shall remain confidential in whole or in part, for any other project without prior written authorization.