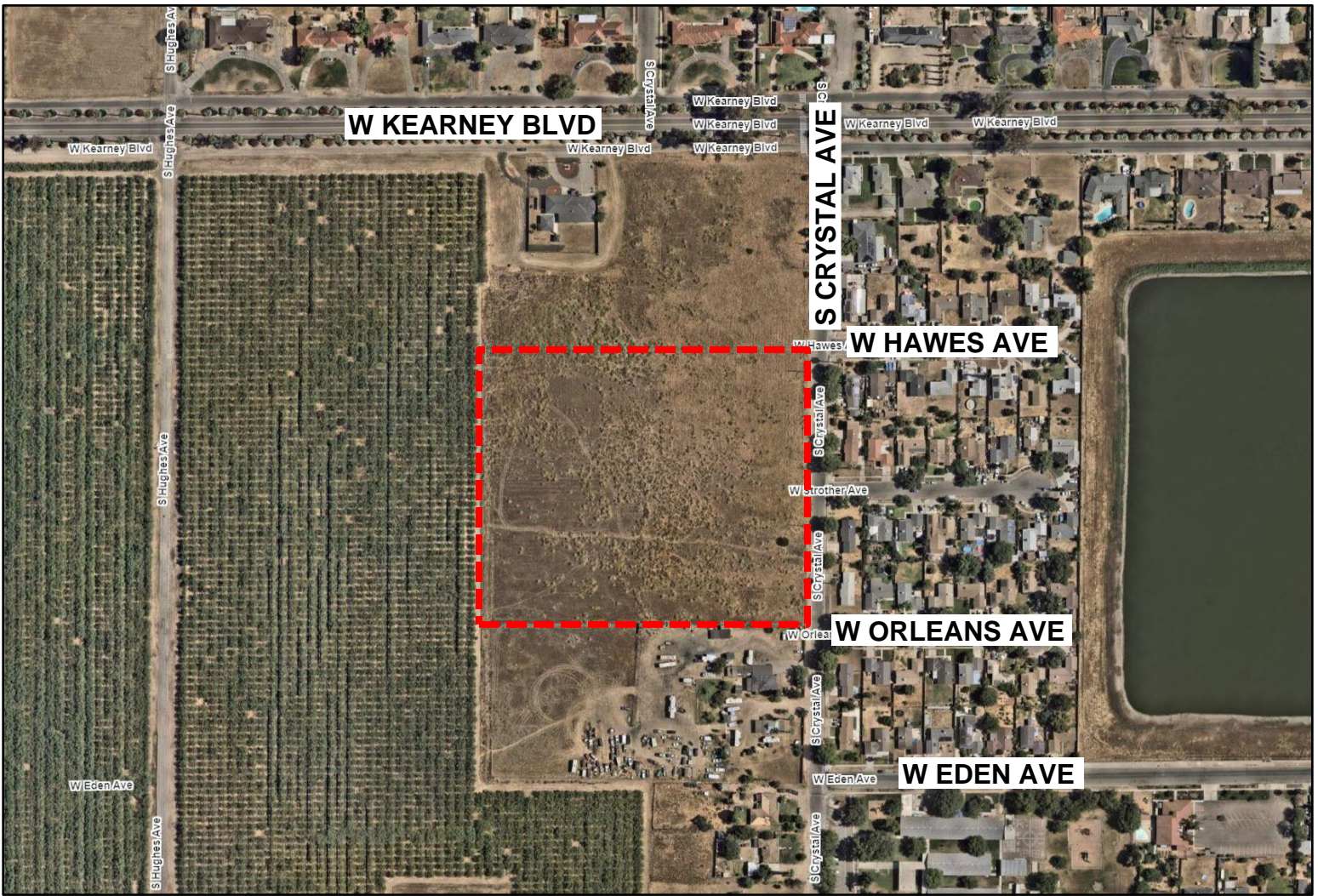


Exhibit C

AERIAL MAP



PLANNING AND DEVELOPMENT DEPARTMENT

Applications

Tentative Tract Map No. 6468
Planned Development Permit Application No.
P23-04061

APN:

464-070-05 & 464-070-13
West side of South Crystal Avenue, between
West Hawes and West Orleans Avenues


Zone District

RS-5/UGM/cz (*Single-Family
Residential, Medium Density/Urban
Growth Management/conditions of
zoning*)

Land Use Designation

Medium Density Residential

LEGEND

 **T-6468**
±7.82 acres

