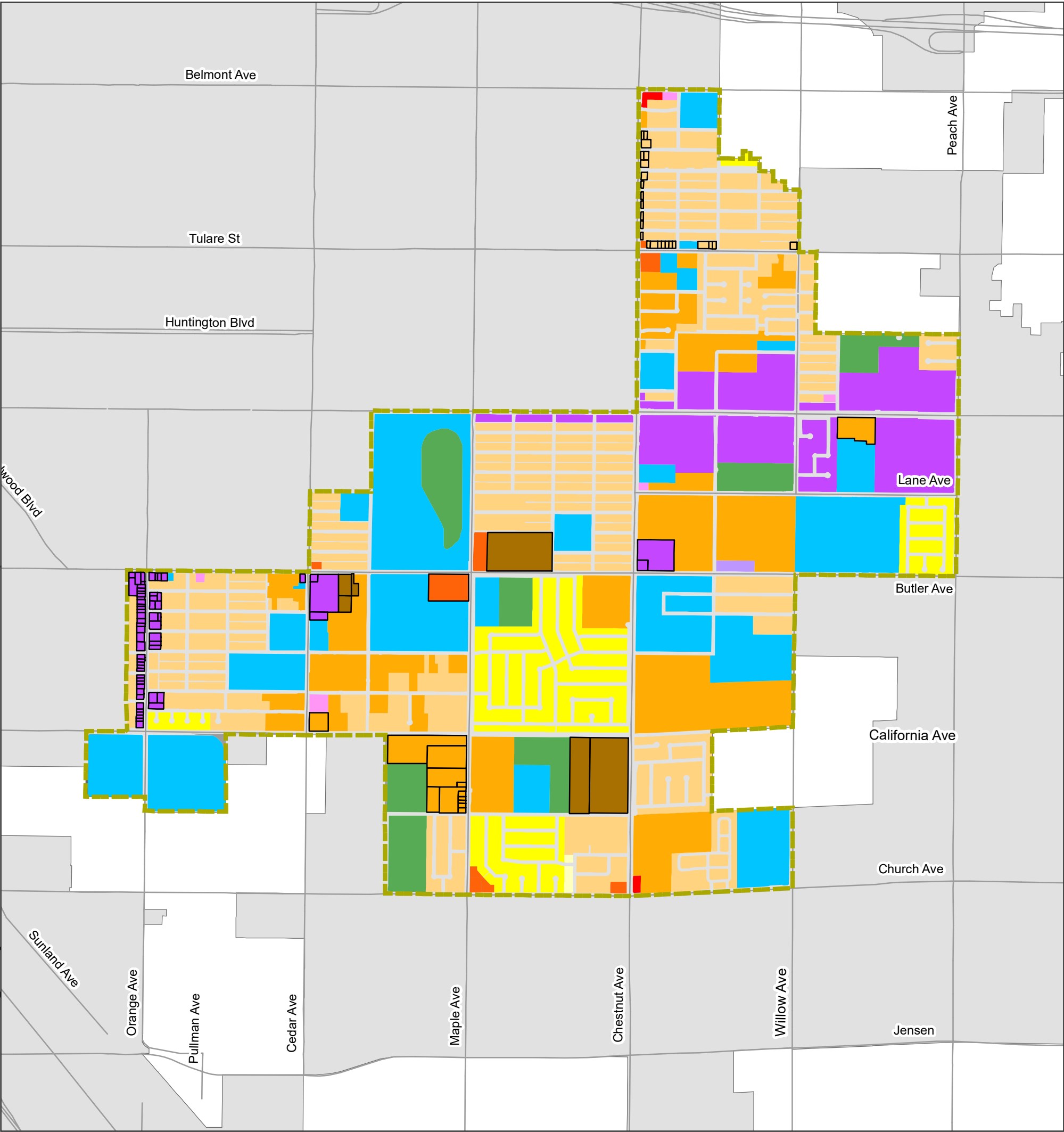




Proposed Land Use Changes in the Central Southeast Area Specific Plan Area



K:\GIS\2025\CSESP\CSESP_PLUchanges.mxd

Legend

Proposed Land Use Changes

- Commercial – Community
- Corridor - Center Mixed Use
- Residential - Medium Density
- Residential - Medium High Density
- Urban Neighborhood

General Plan - Planned Land Use

RESIDENTIAL

- Low Density (1-3.5 D.U./acre)
- Medium Low Density (3.5-6 D.U./acre)

Central Southeast Specific Plan

City limits

- Medium Density (5.0-12 D.U./acre)
- Medium High Density (12-16 D.U./acre)

COMMERCIAL

- Community
- General

EMPLOYMENT

- Office
- Light Industrial
- Heavy Industrial

MIXED USE

- Neighborhood Mixed Use
- Corridor/Center Mixed Use

OPEN SPACE

- Community Park
- Neighborhood Park
- Open Space
- Ponding Basin
- Ponding Basin (Park use)

PUBLIC FACILITIES

- Public/Quasi-public Facility
- Special School
- Elementary School
- Middle School
- College
- Fairgrounds
- Fire Station
- PG & E Substation

0 0.15 0.3 0.6 Miles

Prepared by the Planning and Development Department
Disclaimer: This map is believed to be an accurate representation of the City of Fresno GIS data, however we make no warranties either expressed or implied for correctness of this data.